

# PLAT AND RECORD

S.W. 1/4, N.E. 1/4

Of a Survey on Section 14 T 3 R 12 E. of the 4 P. M. in Janesville Township

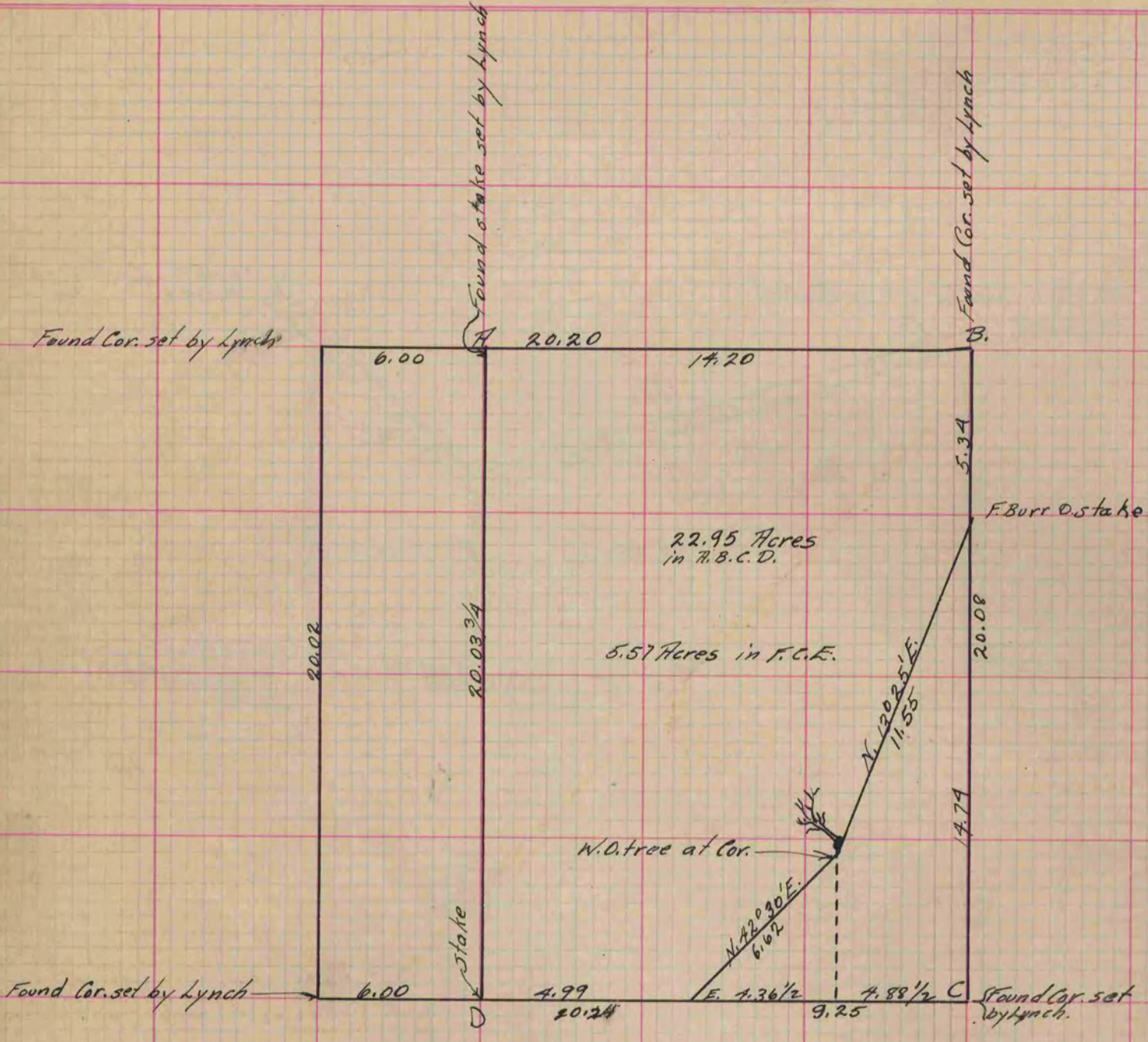
Rock County, Wisconsin, made June the 9 1873

I hereby certify that the following is a correct record of said survey as made by me.

COUNTY BUILDING  
IN CITY OF БЕЛОIT

(Signed) R. H. Lee  
RHO

Deputy  
County Surveyor.



Copied from Page 62 Vol. 2 Original County Surveyor's Record.