

# PLAT AND RECORD

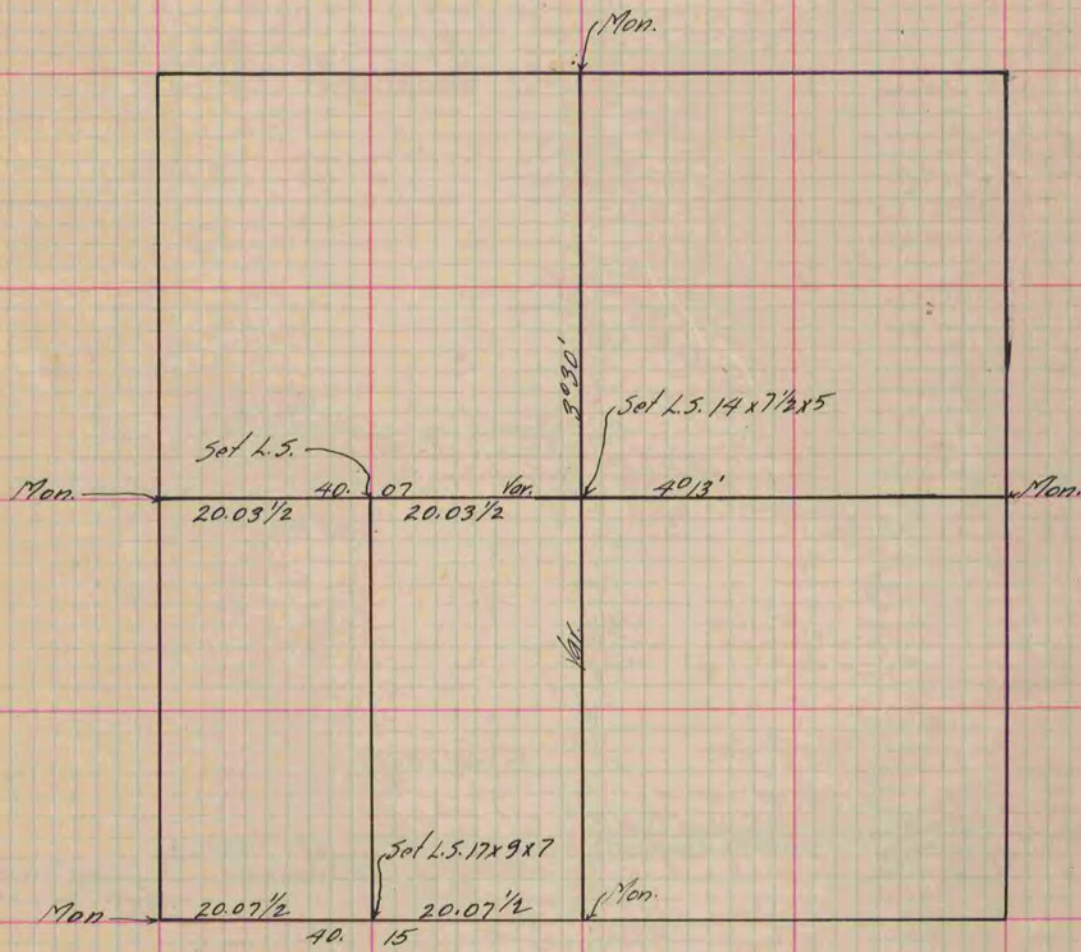
Of a Survey on Section 31 T 2 R 13 E. of the 4 P. M. in La Prairie Township

Rock County, Wisconsin, made Oct. the 13 1893

I hereby certify that the following is a correct record of said survey as made by me.

COUNTY BUILDING  
IN CITY OF BELOIT

(Signed) O. G. Bleedorn  
O. G. B. County Surveyor.



*Copied from P. 374 Vol. 2 County Surveyor's Record.*