

PLAT AND RECORD

Of a Survey on Section 26 T 4 R 13 E. of the 4 P. M. in Milton Township

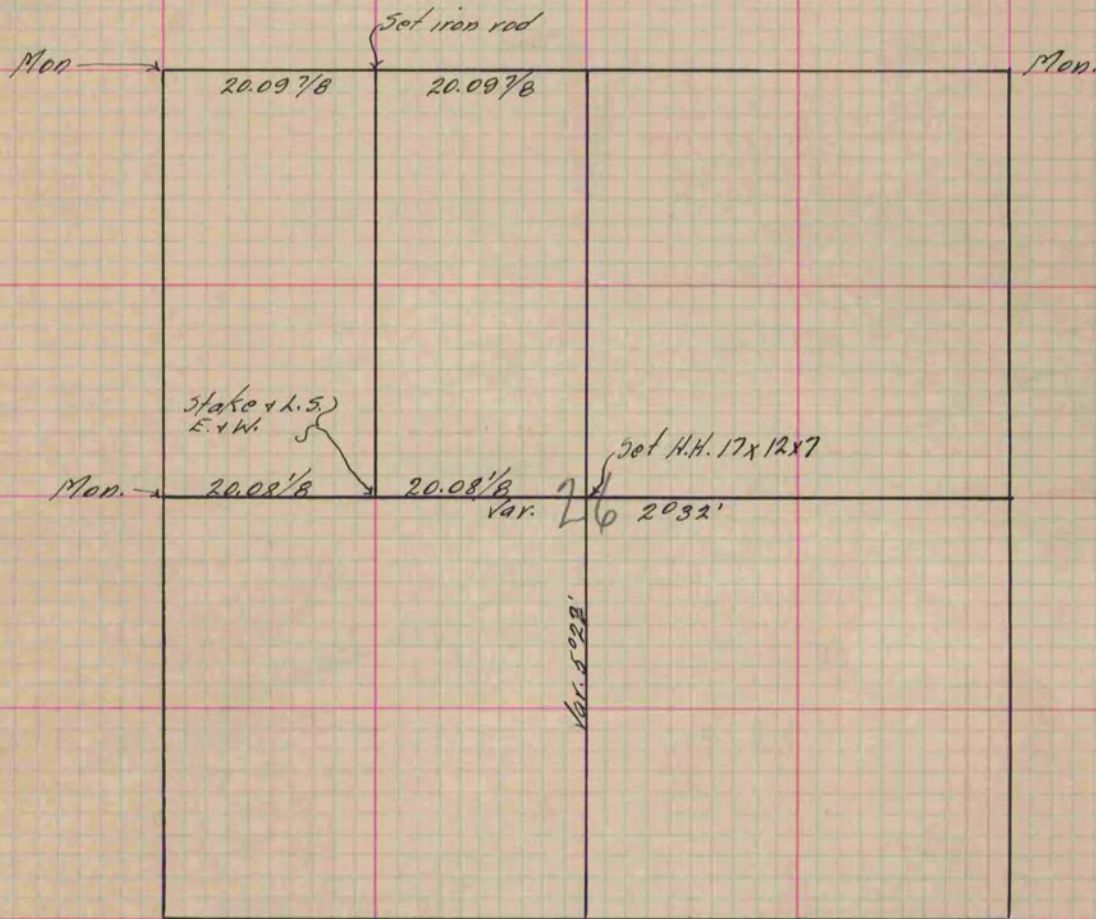
Rock County, Wisconsin, made Apr. the 24 1895

I hereby certify that the following is a correct record of said survey as made by me.

(Signed) P. F. Brown
PMB

County Surveyor.

COUNTY BUILDING
IN CITY OF БЕЛОIT



Copied from P. 379 Vol. 2 County Surveyor's Record.