

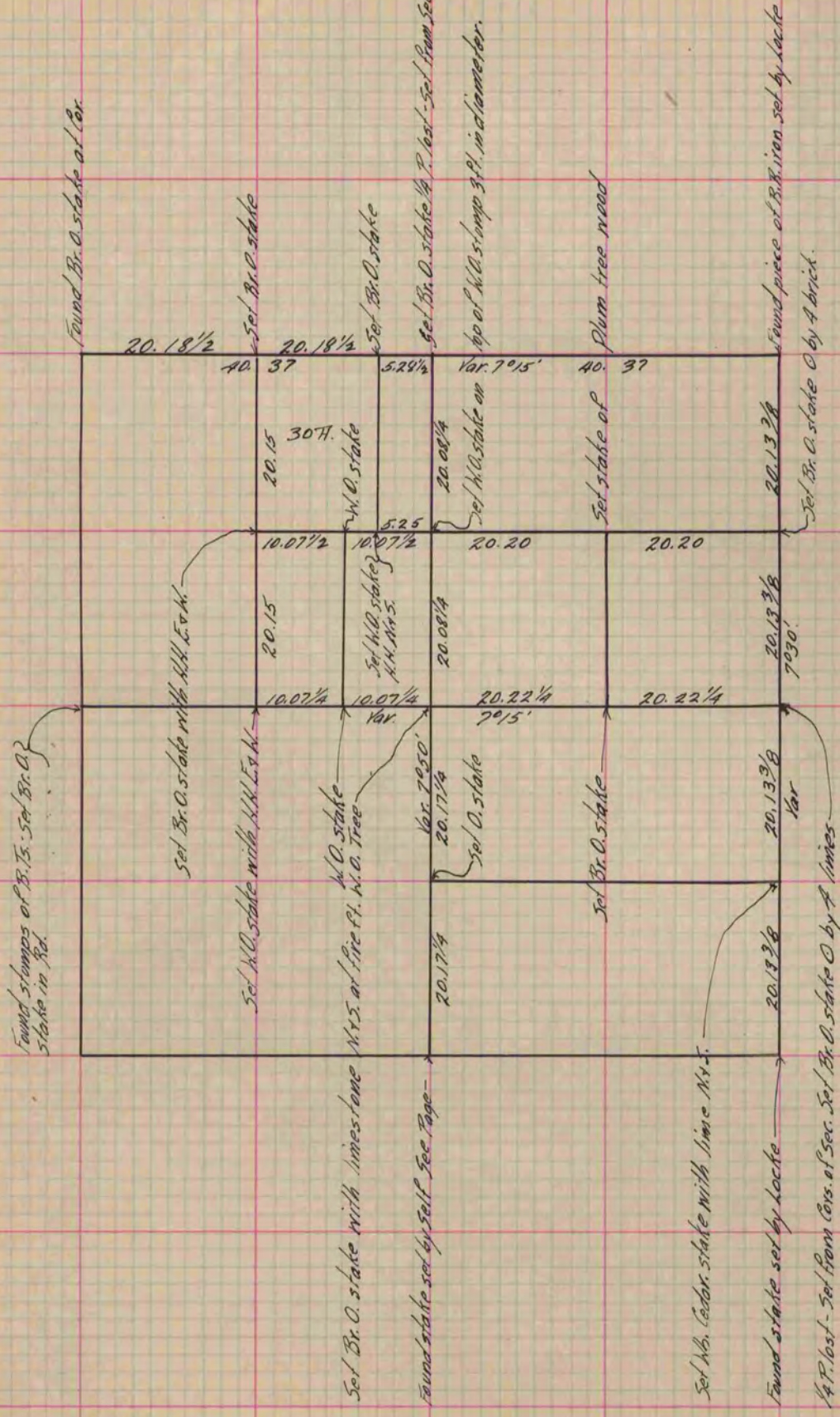
PLAT AND RECORD

Of a Survey on Section 22 T 3 R 10 E. of the 4 P. M. in *Magnolia* Township
Rock County, Wisconsin, made *October* the *21st* 1869

I hereby certify that the following is a correct record of said survey as made by me.

COUNTY BUILDING
IN CITY OF BELoit

(Signed) *R. K. Lee*
R. K. Lee Dep. County Surveyor.



Copied from P. 285 Vol. 1 County Surveyor's Record.