

# PLAT AND RECORD

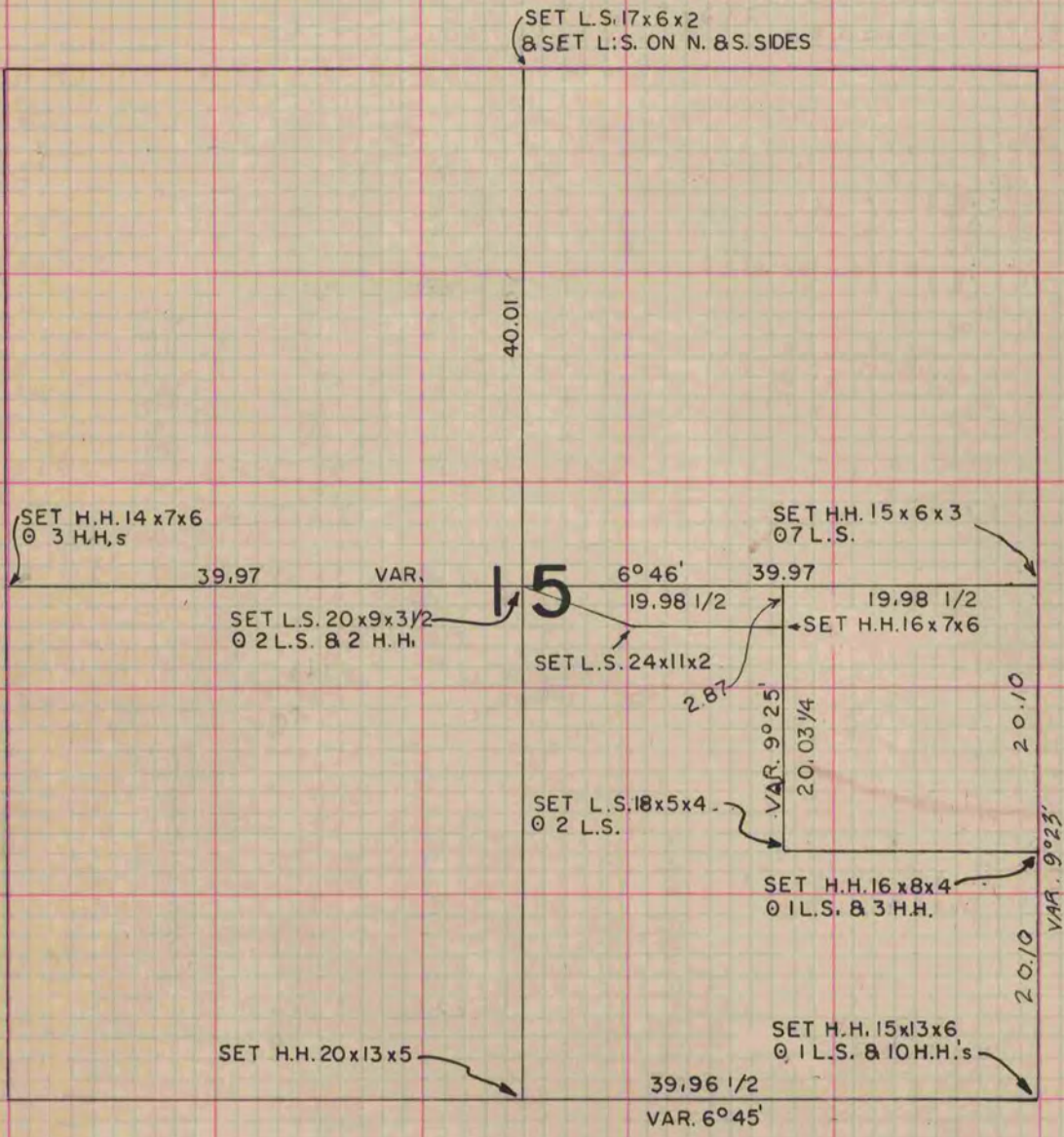
Of a Survey on Section **15** T **2 N** R **14** E. of the 4 P. M. in **BRADFORD** Township  
Rock County, Wisconsin, made **OCTOBER** the **18** **1860**

I hereby certify that the following is a correct record of said survey as made by me.

COUNTY BUILDING  
IN CITY OF BELOTT

(SIGNED) **EDWARD RUGER**

County Surveyor.



COPIED FROM P. 154, VOL. 1, COUNTY SUREYORS RECORD