

# PLAT AND RECORD

Of a Survey on Section 8 T. IN R. II E. of the 4 P. M. in NEWARK Township

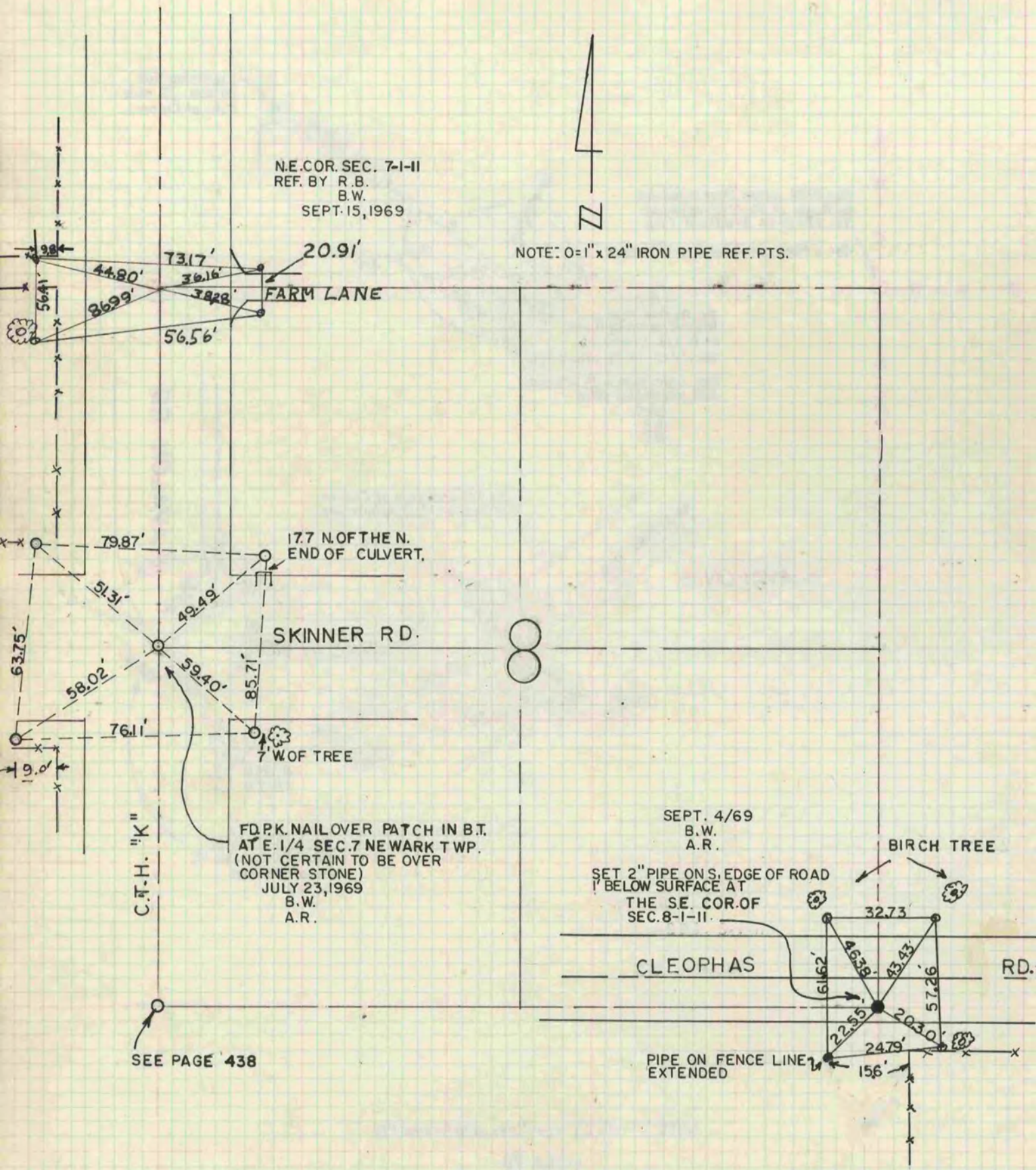
Rock County, Wisconsin, made OCTOBER the 30 1970

I hereby certify that the following is a correct record of said survey as made by me.

**COUNTY BUILDING  
IN CITY OF BELoit**

*Robert E. ...*  
County Surveyor.

THE GEO. D. BARNARD COMPANY, ST. LOUIS



SEE PAGE 438