

PLAT AND RECORD

Of a Survey on Section 27 T. 1 N. R. 13 E. of the 4 P. M. in TURTLE Township

Rock County, Wisconsin, made NOVEMBER the 1968

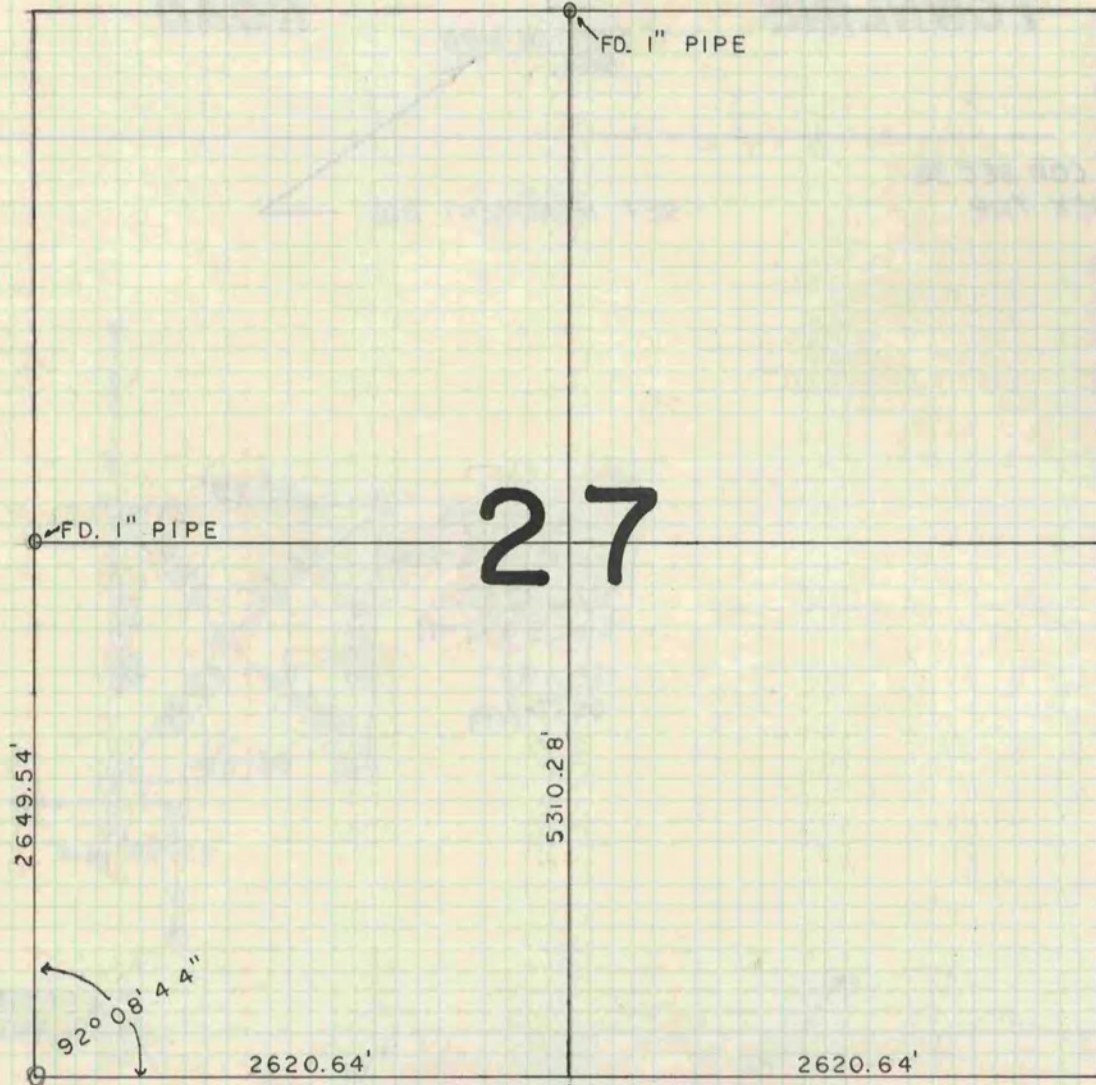
I hereby certify that the following is a correct record of said survey as made by me.

COUNTY BUILDING
IN CITY OF BELOIT

R. B. ...

County Surveyor.

THE GEO. S. BARBER COMPANY, ST. LOUIS



SET 2" PIPE
AT S. 1/4 CORNER OF
SEC. 27-1-13

H. L.
O. S. 11/68
J. S.

NOTE: SEE PAGE 248, VOL. 4.