

PLAT AND RECORD

Of a Survey on Section 26 T 1 R 12 E. of the 4 P. M. in Beloit Township

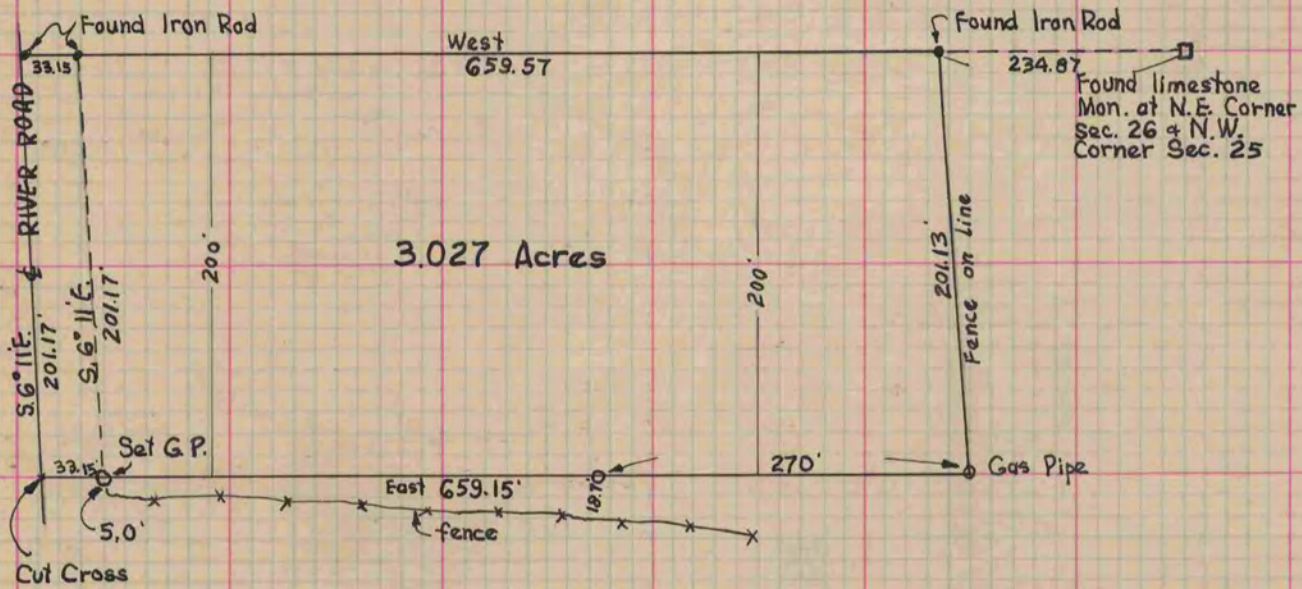
Rock County, Wisconsin, made October the 4-5 1930

I hereby certify that the following is a correct record of said survey as made by me.

COUNTY BUILDING
IN CITY OF БЕЛОИТ

R. H. B.

County Surveyor.



Order *1820