

# PLAT AND RECORD

12/16/75

BLK. 6, Original Plat of Evansville

Of a Survey on Section 27 (S.W. 1/4) 4 R 10 E. of the 4 P. M. in Union Township

Rock County, Wisconsin, made June the 28<sup>th</sup> 1939

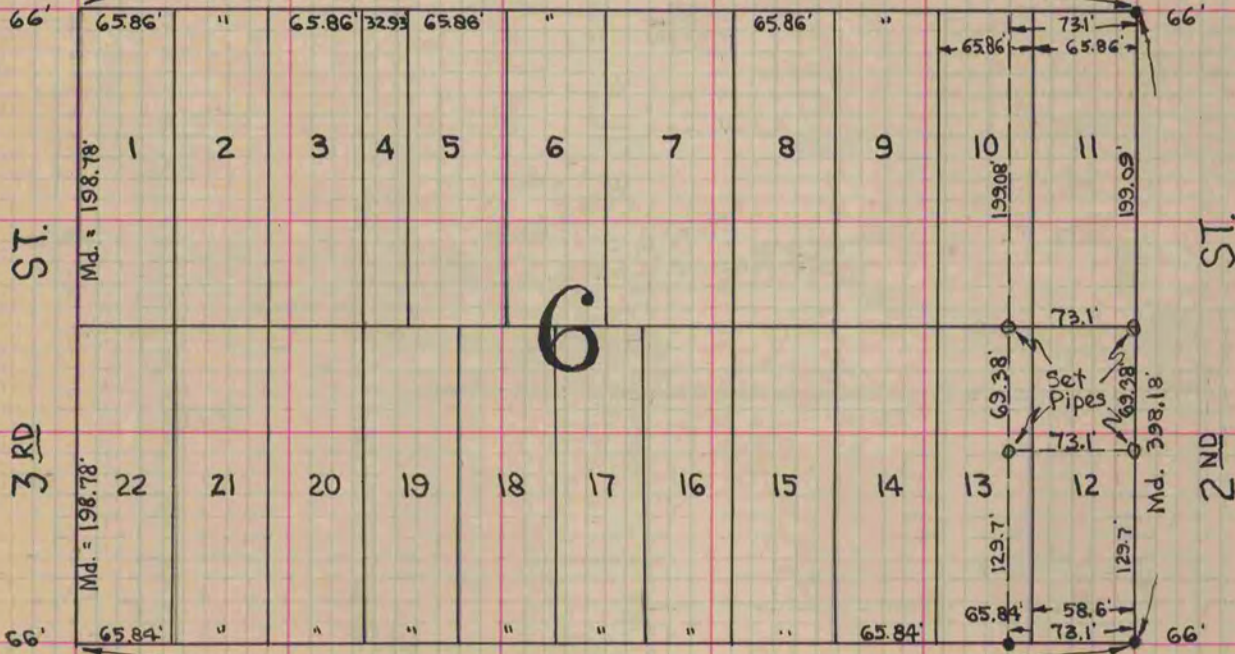
I hereby certify that the following is a correct record of said survey as made by me.

COUNTY BUILDING  
IN CITY OF BELOIT

(Signed) B. J. Sunny  
County Surveyor.

MAIN ST.

Plat = 719.4'; Measured 717.8, Short 1.6'



Plat = 718.74'; Measured 716.94, Short 1.8'

CHURCH ST.