

PLAT AND RECORD

Of a Survey on Section 33 T 2 R 14 E. of the 4 P. M. in Bradford Township
Rock County, Wisconsin, made June the 9 + 10th 1869

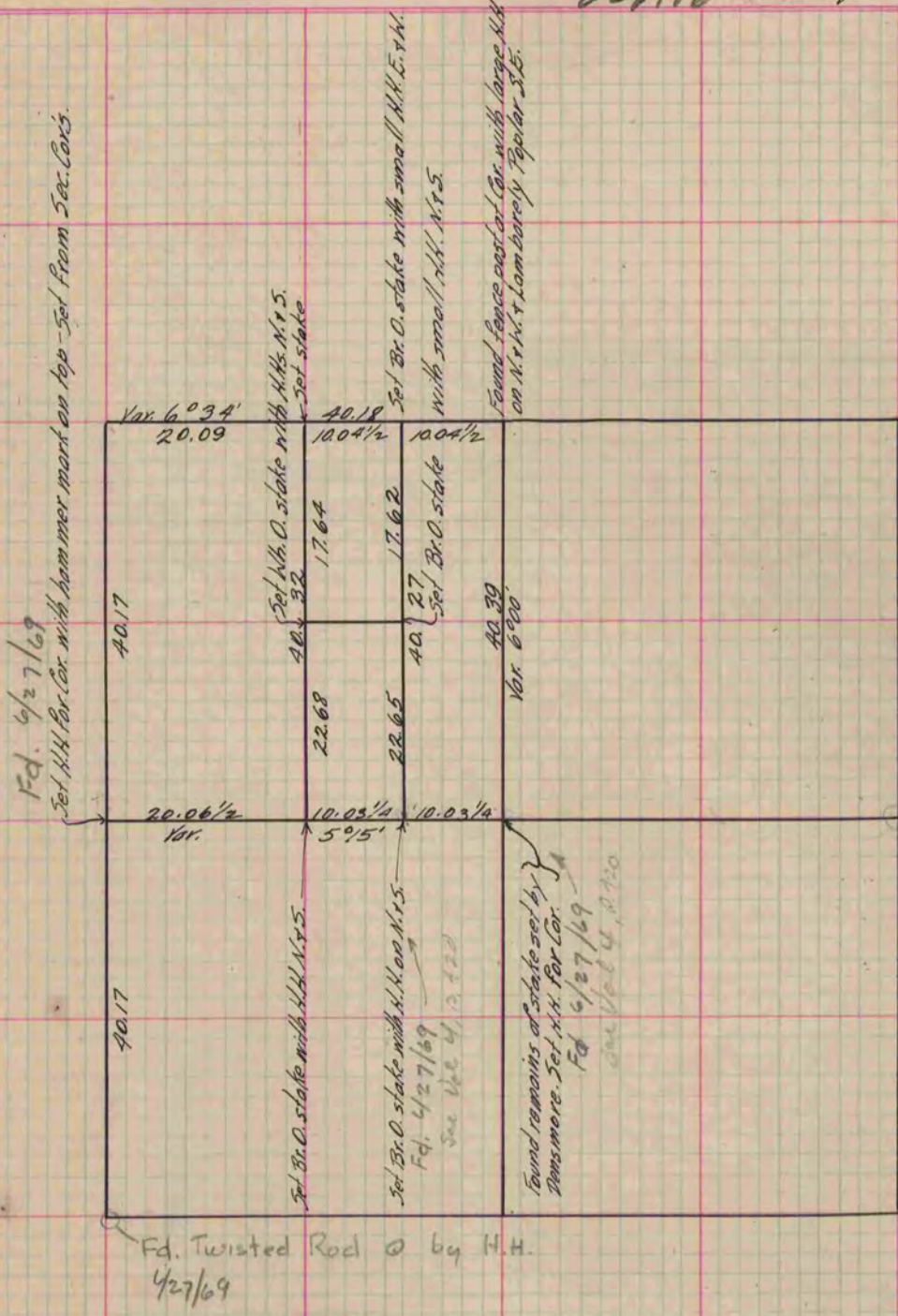
I hereby certify that the following is a correct record of said survey as made by me.

COUNTY BUILDING
IN CITY OF БЕЛОIT

(Signed) R. H. Lee

RHL

Dep. County Surveyor.



Copied from P. 281 Vol. 1 County Surveyor's Record