

PLAT AND RECORD

Of a Survey on Section 33 T 2 R 14 E. of the 4 P. M. in Bradford Township

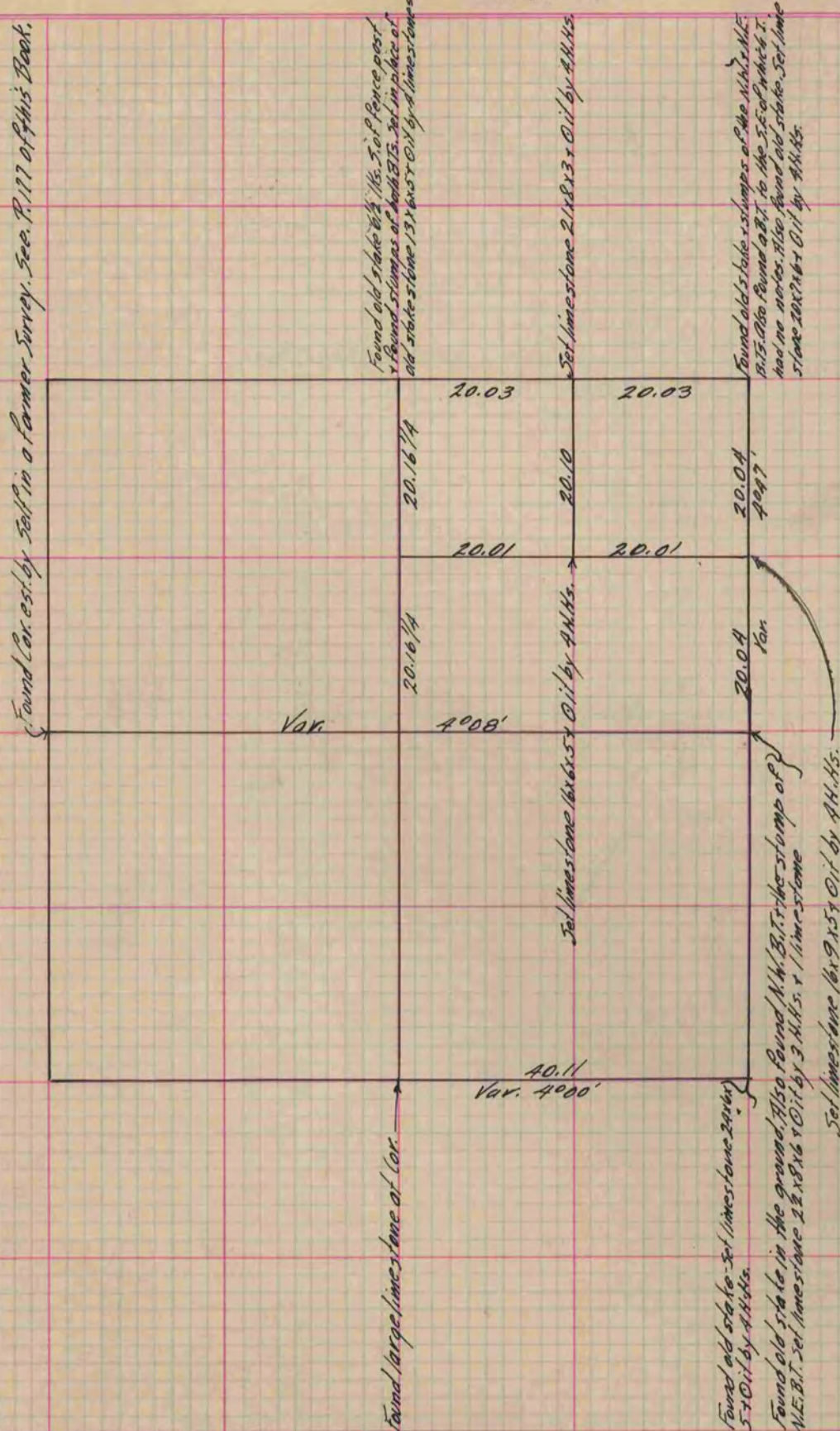
Rock County, Wisconsin, made June the 5th 1870

I hereby certify that the following is a correct record of said survey as made by me.

COUNTY BUILDING
IN CITY OF BELOIT

(Signed) Edward Roger
AMS

County Surveyor.



Copied from P. 210 Vol. 2. County Surveyor's Record.