

# PLAT AND RECORD

Of a Survey on Section 6 T 4 R 12 E. of the 4 P. M. in Fulton Township

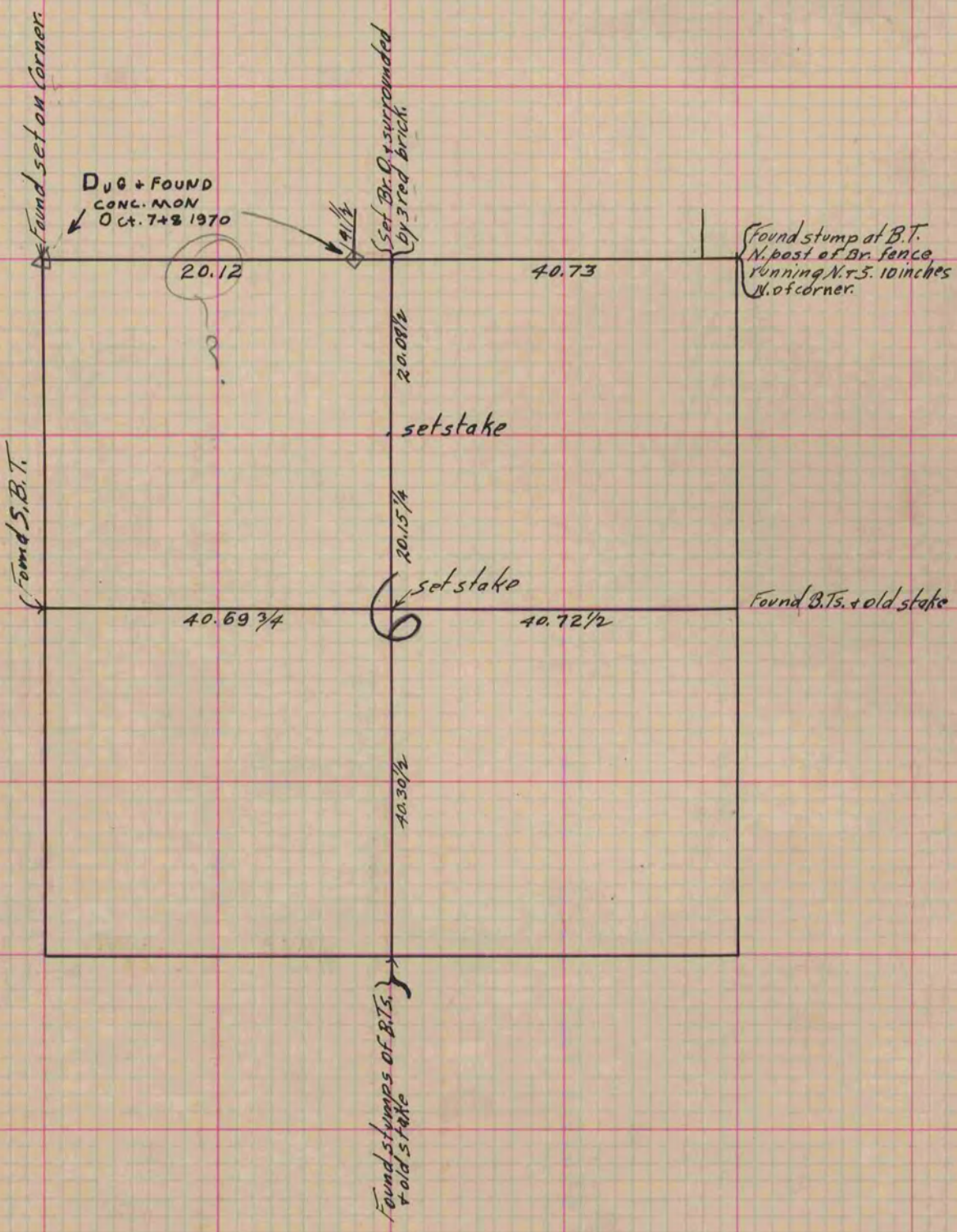
Rock County, Wisconsin, made January the 10<sup>th</sup> 1865

I hereby certify that the following is a correct record of said survey as made by me.

COUNTY BUILDING  
IN CITY OF БЕЛОIT

(Signed) S. D. Locke  
RAMB

County Surveyor.



Copied from Upper 1/2 of Page 214 Vol. 1. Original County Surveyors Record.