

PLAT AND RECORD

Of a Survey on Section 30 T 1 R 13 E. of the 4 P. M. in Turtle Township

Rock County, Wisconsin, made August the 3 1886

I hereby certify that the following is a correct record of said survey as made by me.

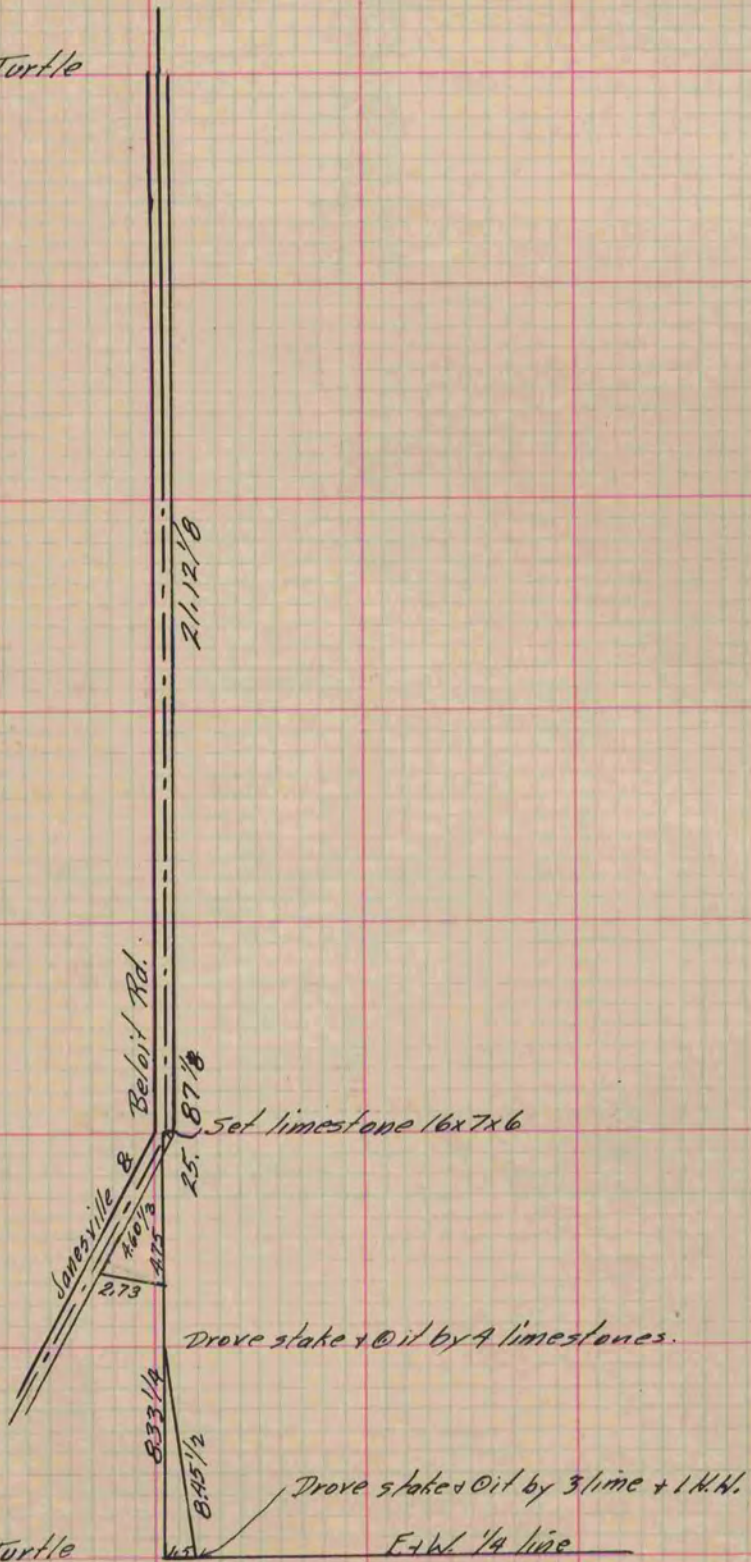
COUNTY BUILDING
IN CITY OF BELOIT

(Signed) Edward Roger
RMR

County Surveyor.

N.W. Cor. Sec. 30 Turtle

W. 1/4 Cor. Sec. 30 Turtle



Copied From P. 232 Vol. 2 County Surveyor's Record.