

# PLAT AND RECORD

Of a Survey on Section 14 T 1 R 11 E. of the 4 P. M. in Newark Township

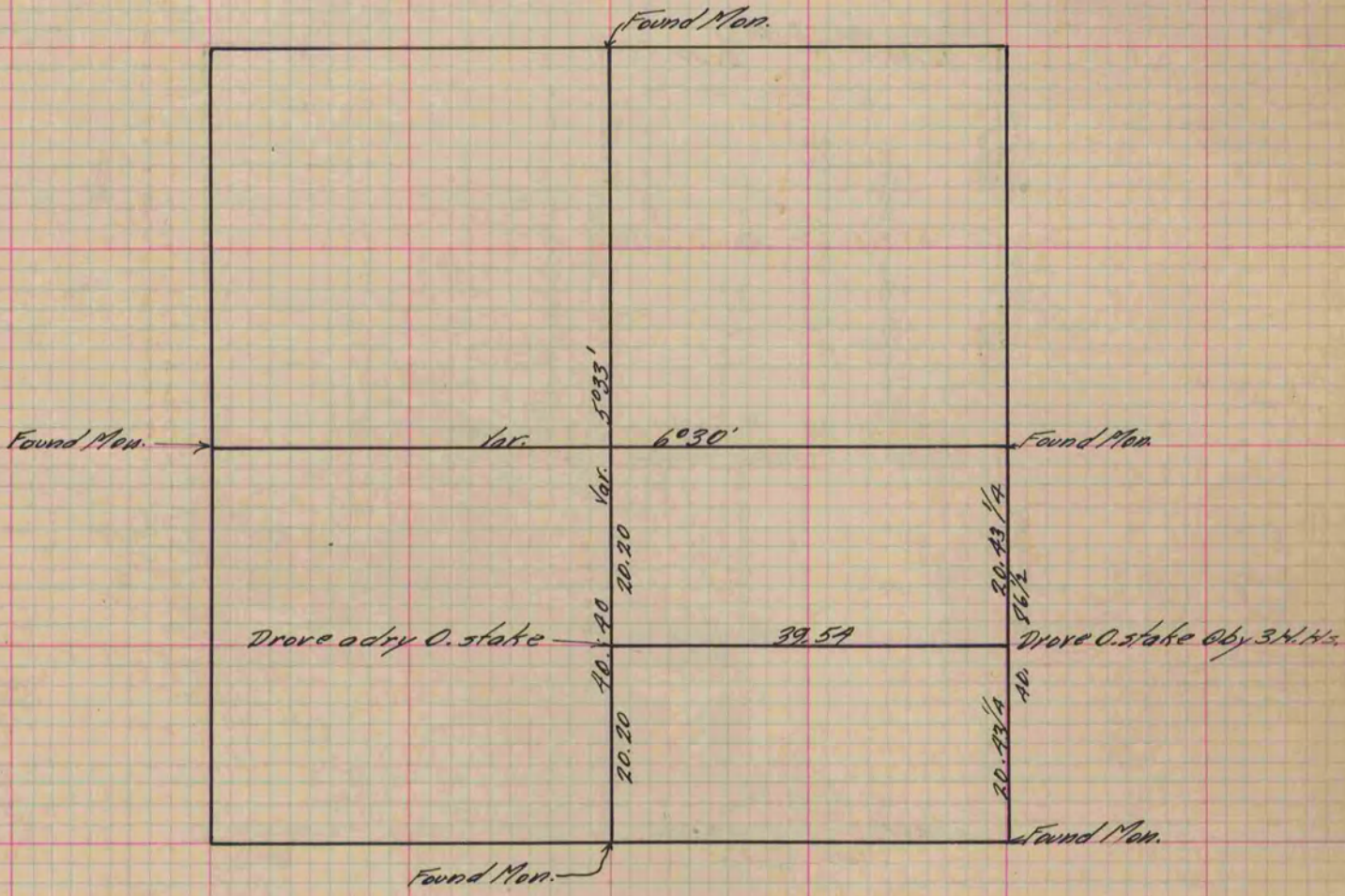
Rock County, Wisconsin, made September the 7<sup>th</sup> 1881

I hereby certify that the following is a correct record of said survey as made by me.

COUNTY BUILDING  
IN CITY OF BELoit

(Signed) R. K. Lee  
R. K. L.

County Surveyor.



Copied from P. 269 Vol. 2 County Surveyor's Record.