

PLAT AND RECORD

Of a Survey on Section 5 T 2 R 9 E. of the 4 P. M. in _____ Township

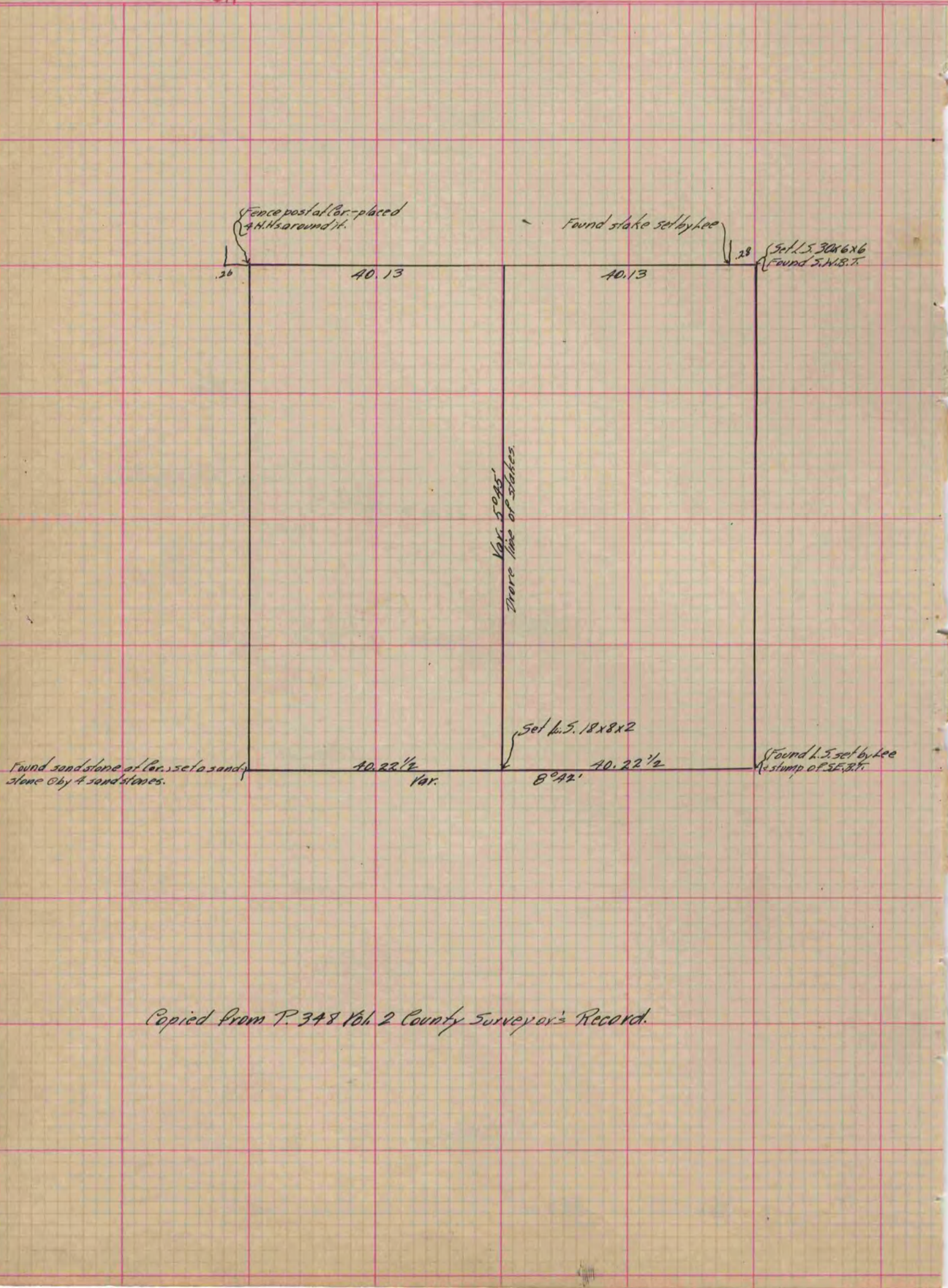
~~Rock~~ County, Wisconsin, made May the 7th 1890

I hereby certify that the following is a correct record of said survey as made by me.

COUNTY BUILDING
IN CITY OF BELOIT

(Signed) O. G. Bleedorn
O. G. B.

Dep^t. County Surveyor.



Copied from P. 348 Vol. 2 County Surveyor's Record.