

# PLAT AND RECORD

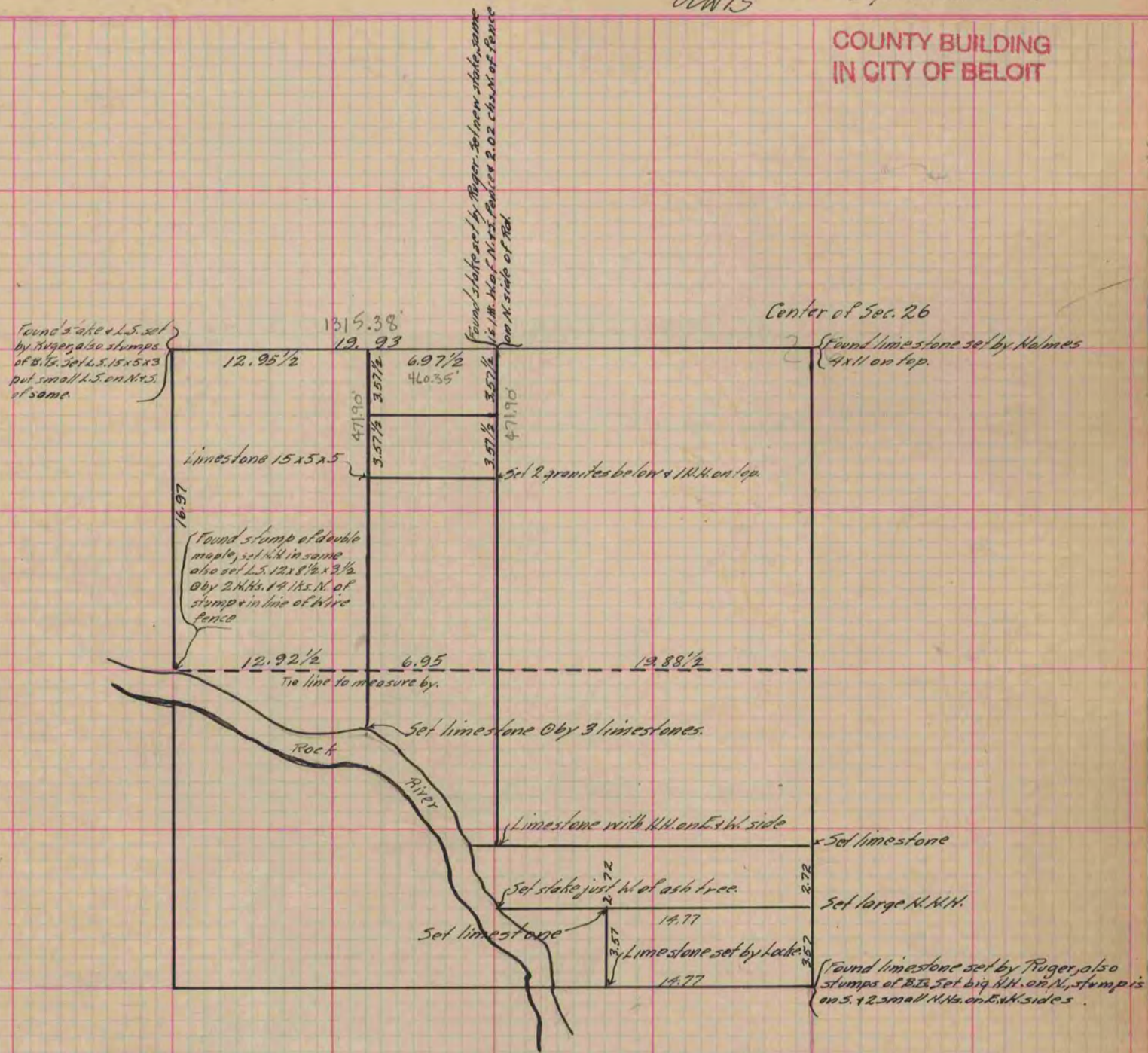
423

Of a Survey on <sup>5 N. 1/4</sup> Section 26 T 2 R 12 E. of the 4 P. M. in Rock Township

Rock County, Wisconsin, made Dec. the 4<sup>th</sup> 1889

I hereby certify that the following is a correct record of said survey as made by me.

(Signed) A. G. Bleedorn  
*A.G.B.* Dept. County Surveyor.



Copied from P. 342 Vol. 2 County Surveyor's Record.