

PLAT AND RECORD

Of a Survey on Section / T 4 R 11 E. of the 4 P. M. in Porter Township

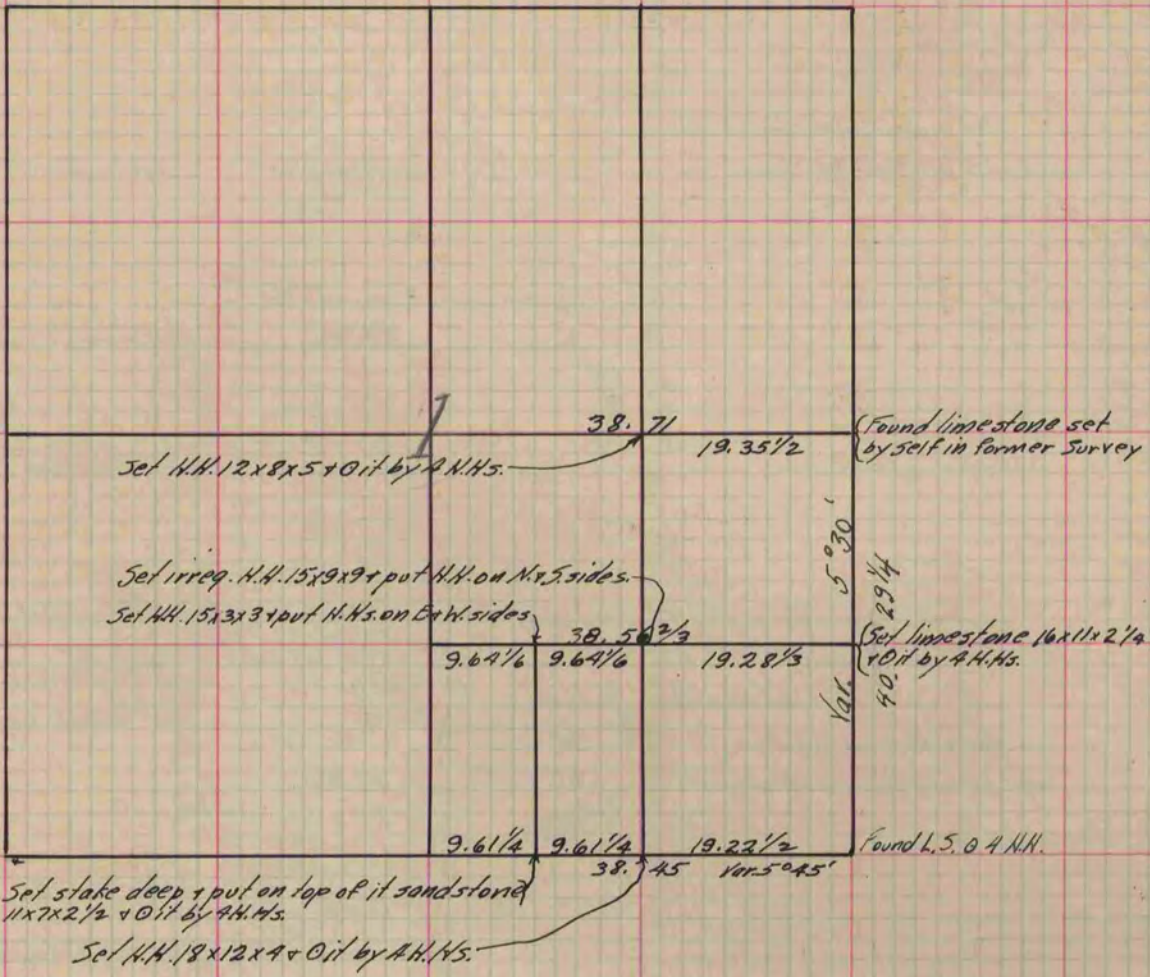
Rock County, Wisconsin, made November the 17th 1886

I hereby certify that the following is a correct record of said survey as made by me.

COUNTY BUILDING
IN CITY OF БЕЛОIT

(Signed) Edward Reger.
R.R.B.

County Surveyor.



(For further survey on Sec. 1 Porter see P. 86)

Copied from P. 236 Vol. 2 County Surveyor's Record.