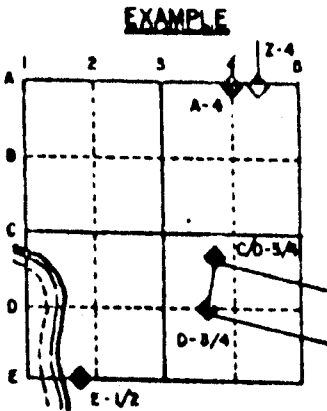


U.S. PUBLIC LAND SURVEY MONUMENT RECORD

For Public Land Survey Corners in the
 T. 3 N., R. 12 E.
CORNER CODE INDEX

	1	2	3	4	5	6	7	8	9	10	11	12	13	14	15	16	17	18	19	20	21	22	23	24	25
A																									
B																									
C	6																								
D		5																							
E			4																						
F				3																					
G					2																				
H																									
I																									
J	7																								
K		8																							
L			9																						
M				10																					
N					11																				
O						12																			
P							13																		
Q								14																	
R									15																
S										16															
T											17														
U												18													
V													19												
W														20											
X															21										
Y																22									
Z																	23								
																		24							
																			25						
																				26					
																					27				
																						28			
																							29		
																								30	
																									31
																									32
																									33
																									34
																									35
																									36



JANESVILLE TWP
 ROCK COUNTY WI

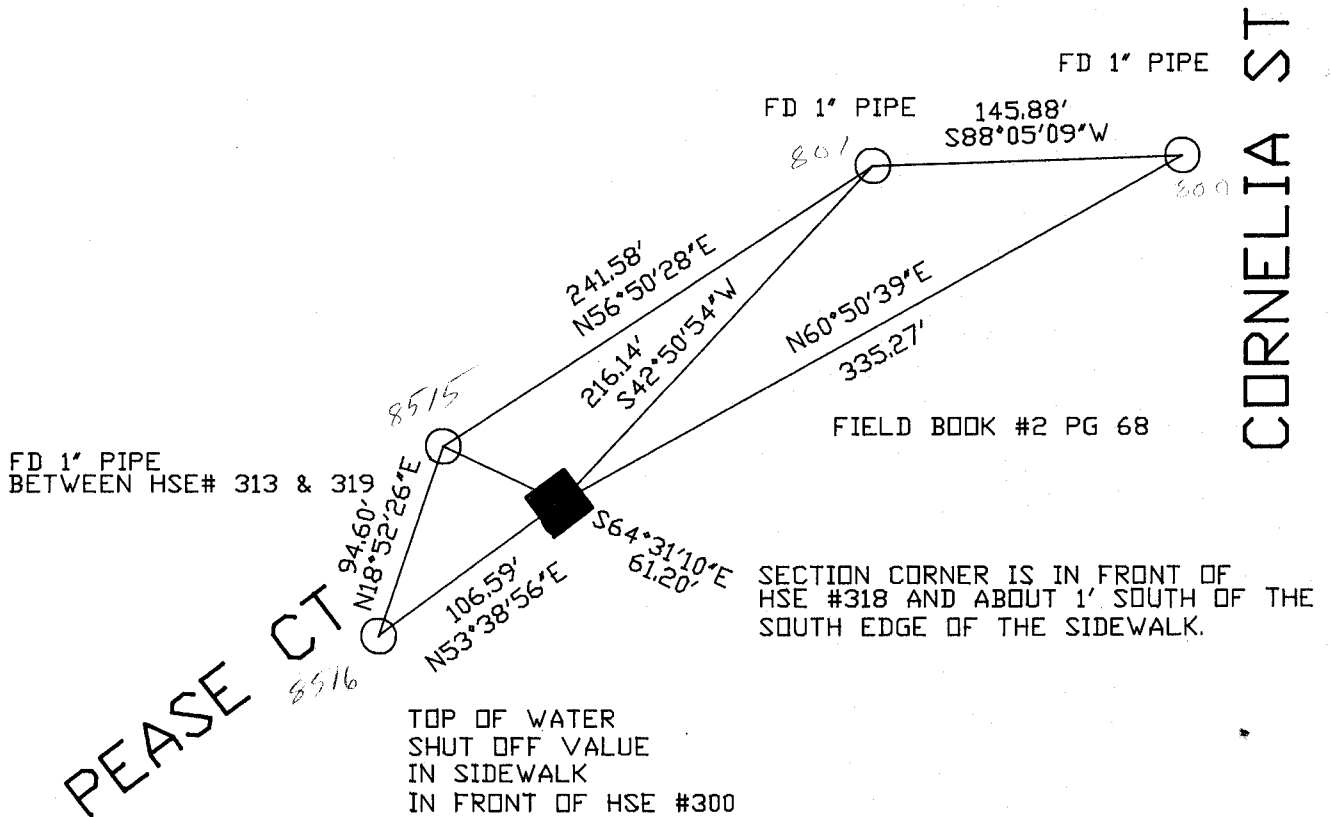
IF AVAILABLE
 STATE PLANE COORDINATES

North (Y) 251,787.38 Elev. (Z) _____
 East (X) 2,231,382.34 Zone _____
 Hor. Datum _____ Vert. Datum _____

PLACE MONUMENT SYMBOL (◆) AT PROPER LOCATION ON ABOVE INDEX

◆ CORNER MONUMENT ○ WITNESS MONUMENT
 POLY MONUMENT

BEARINGS ARE BASED ON: JANESVILLE TWP
 PROTECT



MICROFILMED

SHEET 1 OF 3

CORNER CODE: V 23

(B) Describe any record evidence, monument evidence, occupational evidence, testimonial evidence or any other material evidence you considered, and whether the monument was found or placed.

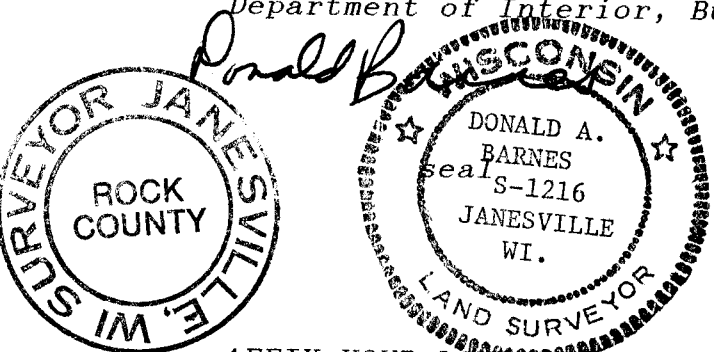
- 1845 PEASE - HICKORY GLEN BK 1 PG 16-16B. CALLS FOR THE S 1/4 CORNER OF SECTION 25. SHOWS A BEARING OF S89-30 FOR THE SOUTH LINE OF THE SE 1/4 OF SECTION 25 AND N7-30E TO THE CENTER OF SECTION 25. ALSO CALLS FOR 1073.82 TO THE NORTH LINE OF GLEN ST AND 686.40 TO THE EAST RIGHT OF WAY OF BLUFF ST AND 1072.5 FROM THE EAST RIGHT OF WAY OF BLUFF ST ALONG GLEN ST TO THE N/S 1/4 LINE OF SECTION 25.
- 1847 BINNEY - PIXLEY & SHAW'S ADD BK 1 PG 10 CALLS FOR THE S 1/4 CORNER OF SECTION 25. SHOWS THE FOLLOWING BEARINGS:
S87-30E SW TO S 1/4 CORNER OF SECTION 25
S87-30E S 1/4 TO SE CORNER OF SECTION 25.
N1W S 1/4 TO CENTER OF SECTION 25.
CALLS FOR A MAGNETIC VARIATION OF 7-30 EAST.
- 1850 MILLER - PEASE'S ADD. BK 2 PG 19. CALLS FOR THE S 1/4 CORNER OF SECTION 25 AND A DISTANCE OF 1221.0 TO THE NORTH LINE OF THE SUBDIVISION. CALLS FOR 297 TO THE WEST RIGHT OF WAY OF CORNELIA ST. SHOWS A BEARING OF S87-30E FOR THE SOUTH LINE OF THE SE 1/4 OF SECTION 25 WITH A MAGNETIC VARIATION OF 8E.
- 1857 RUGER - PEASE'S SECOND ADD BK 3 PG 30. CALLS FOR THE N/S QUARTER LINE OF SECTION 25. SHOWS THE EAST RIGHT OF WAY LINE OF THOMAS STREET AS PARALLEL AND 33. SHOWS 1409.1 TO THE NORTH LINE OF PEASE'S ADD. ALSO CALLS FOR A DISTANCE OF 297 TO THE WEST RIGHT OF WAY LINE OF CORNELIA ST.
- 1854 MILLER - PIXLEY & SHAW'S ADD BK 2 PG 43. CALLS FOR THE N/S 1/4 LINE OF SECTION 25 AS 825 FROM BLUFF ST. ALONG THE NORTH LINE OF GLEN ST. ALSO STATES THAT THE CENTER OF SECTION IS 1558.92 NORTH OF THE INTERSECTION OF THE N/S 1/4 LINE AND THE NORTH LINE OF GLEN ST. STATES THAT THE WEST R/W LINE OF THOMAS ST. IS 30 FEET FROM THE N/S 1/4 LINE. CALLS FOR THE NORTH LINE OF GLEN ST AS 1088.92 NORTH OF THE S 1/4 CORNER OF SECTION 25.
- 1869 LYNCH - J. MAURIC SMITHS BK 3 PG 55 CALLS FOR THE SECTION CORNER. SHOWS THE N/S 1/4 LINE GOING THRU THE SW CORNER OF LOT 19 AND 100.65 EAST OF THE NE CORNER OF LOT 21. SHOWS THE CORNER SOUTH OF 3RD ST.
- 1870 RUGER VOL 2 PG 32 FOUND LIMESTONE SET BY SELF.

ESTABLISHED THE NORTH/SOUTH POSITION OF THE CORNER BY USING THE RECORD DISTANCE FROM THE NORTH LINE OF GLENN ST. (1088.92). ESTABLISHED THE EAST/WEST POSITION OF THE CORNER BY PROJECTING A LINE FROM THE CENTER OF SECTION 25 AND THE FOUND PIPE ON THE NORTH LINE OF GLEN ST. THIS LINE FITS THE RIGHT OF WAY DISTANCE OF THE FOUND PIPES ALONG THOMAS ST. IT IS ALSO IN HARMONY WITH THE FOUND PIPES ON THE WEST RIGHT OF WAY OF CORNELIA ST.

C) Was the corner restored through acceptance of (1) an obliterated evidence location, or, (2) a found perpetuated location?

RESTORED CORNER THROUGH ACCEPTANCE OF OBLITERATED EVIDENCE LOCATION.

I, Donald Barnes, hereby certify that the corner points as identified by the corner code index were, in a field survey on, JULY 10, 1991, established, re-established, monumented, re-monumented, recovered or restored as expressed below and in conformance with the regulations and rules as required in the current manual of survey instructions of the United States Department of Interior, Bureau of Land Management.



COUNTY SURVEYOR FILING DATA

Date of computer entry _____

Date microfilmed _____

Number of included sheets _____

CORNER CODE

AFFIX YOUR LAND SURVEYOR SEAL

(b.) Describe any record evidence, monument evidence, occupational evidence, testimonial evidence or any other material evidence you considered, and whether the monument was found or placed.

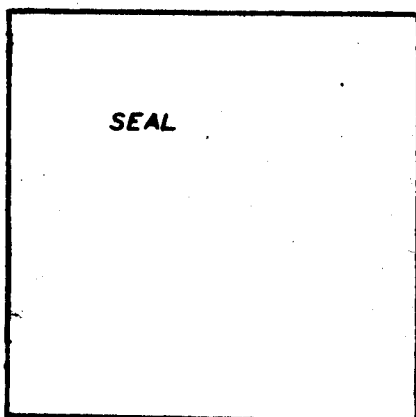
1. 1870 EDWARD RUGER VOL 2 PG 32 Found limestone set by self

(c.) Was the corner restored through acceptance of (1) an obliterated evidence location, or, (2) a found perpetuated location?

(d.) Describe any material discrepancy between the location of the corner as restored or reestablished and the location of that corner as previously restored or reestablished by distance and direction. Show the discrepancy on the plan view drawing under (a), above. Show the distances between the corner as previously restored or reestablished and (1) the corner as restored or reestablished, and (2) to at least 4 of the witness monuments shown on the drawing in (a), above.

(e.) Was the corner reestablished through lost corner proportionate methods? If so, show the method, including the directions and distances to other public land survey corners used as evidence or used for proportioning in determining the corner location.

I, _____, hereby certify that the corner points as identified by the corner code index were, in a field survey on _____, established, re-established, monumented, re-monumented, recovered or restored as expressed below and in conformance with the regulations and rules as required in the current manual of survey instructions of the United States Department of Interior, Bureau of Land Management.



COUNTY SURVEYOR FILING DATA

Date of Computer Entry _____

Date Received _____

Date Microfilmed _____

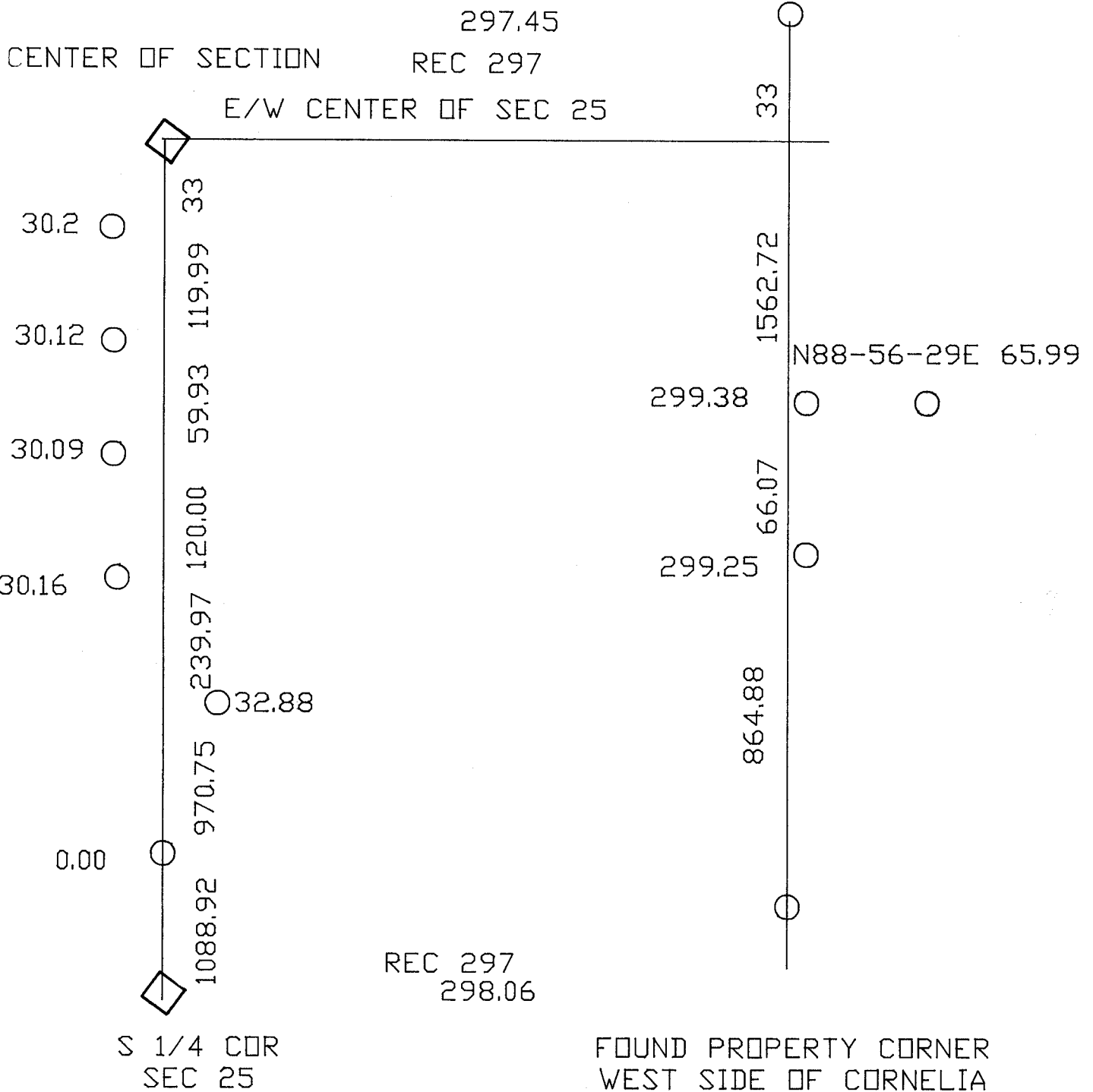
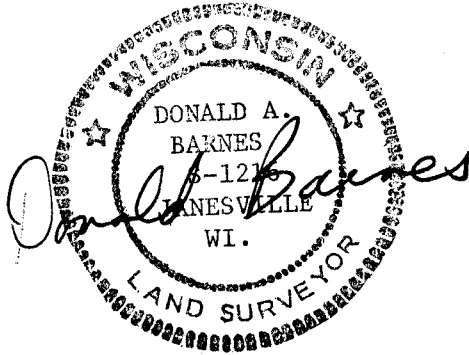
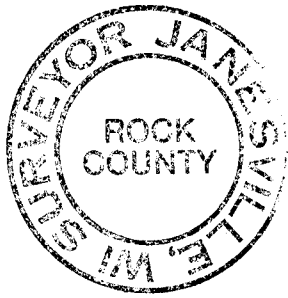
Treasurer's Receipt No. _____

Number of Included Sheets _____

AFFIX YOUR LAND SURVEYOR SEAL.

CORNER
CODE

V23



DISTANCES NEXT TO PROPERTY CORNERS REFLECT THE OFFSET DISTANCE FROM THE CENTER OF SECTION TO THE SOUTH QUARTER CORNER OF SECTION 25.

○ FOUND PROPERTY PIPE OR PIN