

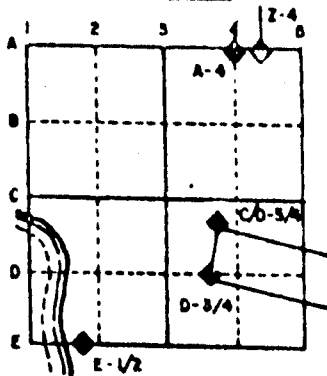
**U.S. PUBLIC LAND SURVEY MONUMENT RECORD**

For Public Land Survey Corners in the  
 T. 3 N., R. 12 E.  
**CORNER CODE INDEX**

	1	2	3	4	5	6	7	8	9	10	11	12	13	14	15	16	17	18	19	20	21	22	23	24	25
A																									
B																									
C	6																								
D		5																							
E			4																						
F				3																					
G					2																				
H																									
I																									
J																									
K																									
L																									
M																									
N																									
O																									
P																									
Q																									
R																									
S																									
T																									
U																									
V																									
W																									
X																									
Y																									
Z																									

PLACE MONUMENT SYMBOL (◆) AT PROPER LOCATION ON ABOVE INDEX

**EXAMPLE**



**JANESVILLE TWP**  
**ROCK COUNTY WI**

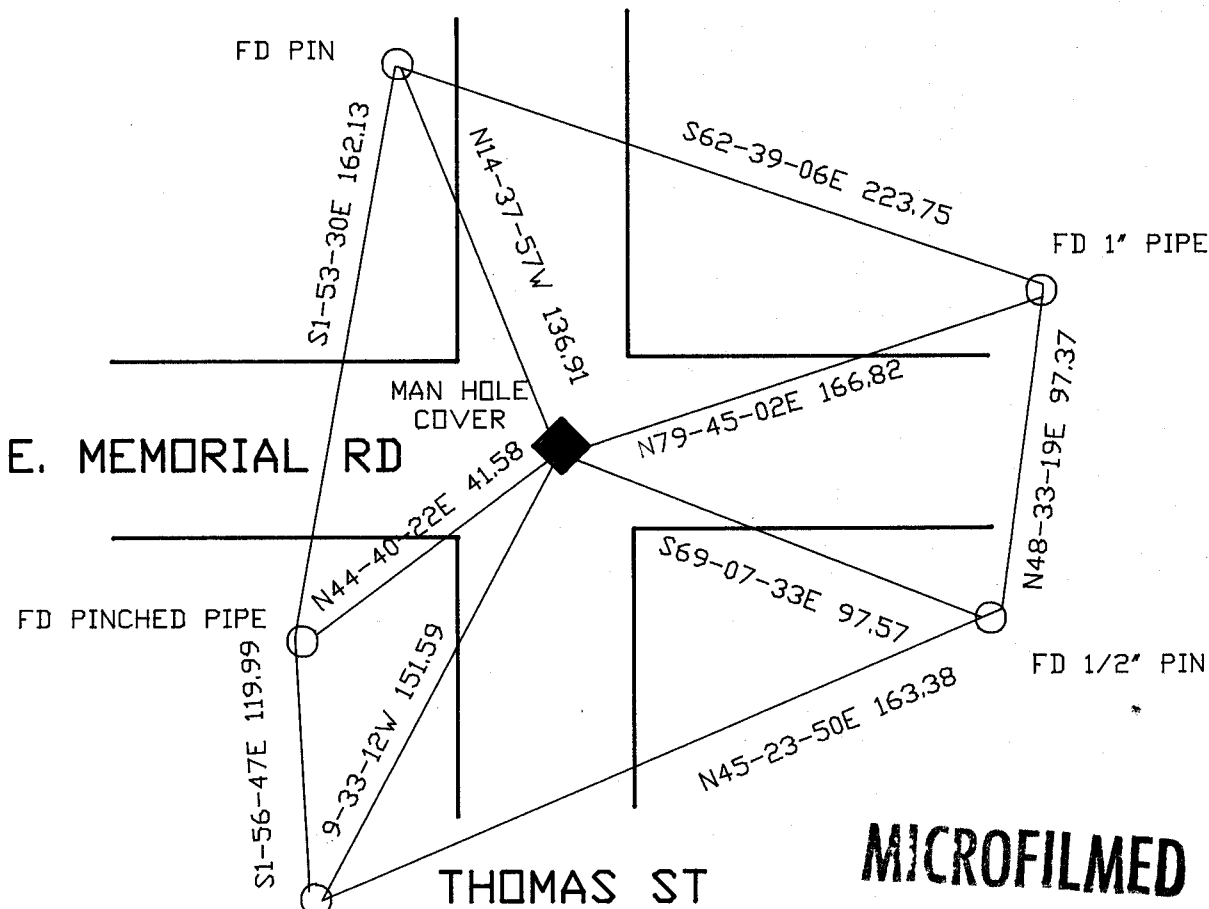
IF AVAILABLE  
 STATE PLANE COORDINATES

North (Y) 254,415.68      Eleve. (Z) \_\_\_\_\_  
 East (X) 223,294.86      Zone \_\_\_\_\_  
 Hor. Datum \_\_\_\_\_      Vert. Datum \_\_\_\_\_

◆ CORNER MONUMENT      ○ WITNESS MONUMENT

JANESVILLE TWP PROJECT

BEARINGS ARE BASED ON:



**MICROFILMED**

SHEET 1 OF 4

CORNER CODE: T 23

(B) Describe any record evidence, monument evidence, occupational evidence, testimonial evidence or any other material evidence you considered, and whether the monument was found or placed.

1845 PEASE - HICKORY GLEN BK 1 PG 16-16B. SHOWS A BEARING OF N7-30E TO THE CENTER OF SECTION 25.

1850 MILLER - PEASE'S ADD BK 2 PG 19. CALLS FOR THE N/S 1/4 LINE OF SECTION 25.

1854 MILLER - PIXLEY & SHAW'S 2ND ADD BK 2 PG 43. CALLS FOR THE N/S 1/4 LINE OF SECTION 25. STATES THAT THE CENTER OF SECTION 25 IS 1558.92 NORTH OF THE INTERSECTION OF THE N/S 1/4 LINE AND THE NORTH LINE OF GLEN ST. ALSO STATES THAT THE WEST R/W LINE OF THOMAS ST IS 30 FEET FROM THE N/S 1/4 LINE.

1857 RUGER - PEASE'S SECOND ADD BK 3 PG 30. CALLS FOR THE N/S QUARTER LINE OF SECTION 25 AND CALLS FOR THE EAST R/W LINE OF THOMAS ST AS 33.00 FROM THE N/S CENTERLINE. ALSO CALLS FOR 2673 TO THE EAST 1/4 CORNER OF SECTION 25 AND 1409.1 TO THE NORTH LINE OF PEASES ADD.

1890 BLEEDORN - PEASES 3RD ADD BK 5 PG 2 CALLS FOR THE CENTER OF SECTION 25 AND STATES THAT THE R/W LINE OF THE SUBDIVISION IS 33 FROM THE E/W CENTER LINE OF SECTION 25. ALSO STATES THAT THE R/W OF THOMAS ST THAT IS NORTH OF THE E/W CENTER LINE IS 63.03.

1870 RUGER VOL 2 PG 32 SUBDIVIDED SECTION 25 BUT STATES NOTHING ABOUT THE CENTER OF THE SECTION.

CITY MONUMENTATION MAP CALLS FOR THE MAN HOLE AS THE CENTER OF SECTION 25.

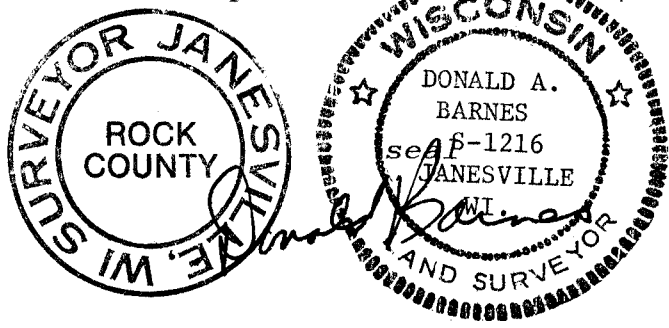
ESTABLISHED THE RIGHT OF WAY LINES OF E. MEMORIAL AND THOMAS ST FROM FOUND PROPERTY CORNERS. INTERSECTED THE CENTER OF THOSE RIGHT OF WAY LINES TO RESTORE THE CENTER OF SECTION 25. THIS IS IN HARMONY WITH FOUND MONUMENTATION. IT IS NOT ON LINE WITH THE NORTH AND SOUTH QUARTER CORNERS OF SECTION 25. ALSO IT IS IN HARMONY WITH THE CITY'S CALL FOR THE CORNER AT THE MAN HOLE.

C) Was the corner restored through acceptance of (1) an obliterated evidence location, or, (2) a found perpetuated location?

RESTORED THROUGH ACCEPTANCE OF OBLITERATED EVIDENCE LOCATION.

D) Describe any material discrepancy between the location of the corner as restored or reestablished and the location of that corner as previously restored or reestablished by distance and direction. Show the discrepancy on the plan view drawing under (a), above. Show the distances between the corner as previously restored or reestablished and (1) the corner as restored or reestablished, and (2) to at least 4 of the witness monuments shown on the drawing in (a), above.

I, Donald Barnes, hereby certify that the corner points as identified by the corner code index were, in a field survey on, JULY 18, 1991, established, re-established, monumented, re-monumented, recovered or restored as expressed below and in conformance with the regulations and rules as required in the current manual of survey instructions of the United States Department of the Interior, Bureau of Land Management.



COUNTY SURVEYOR FILING DATA

Date of computer entry \_\_\_\_\_

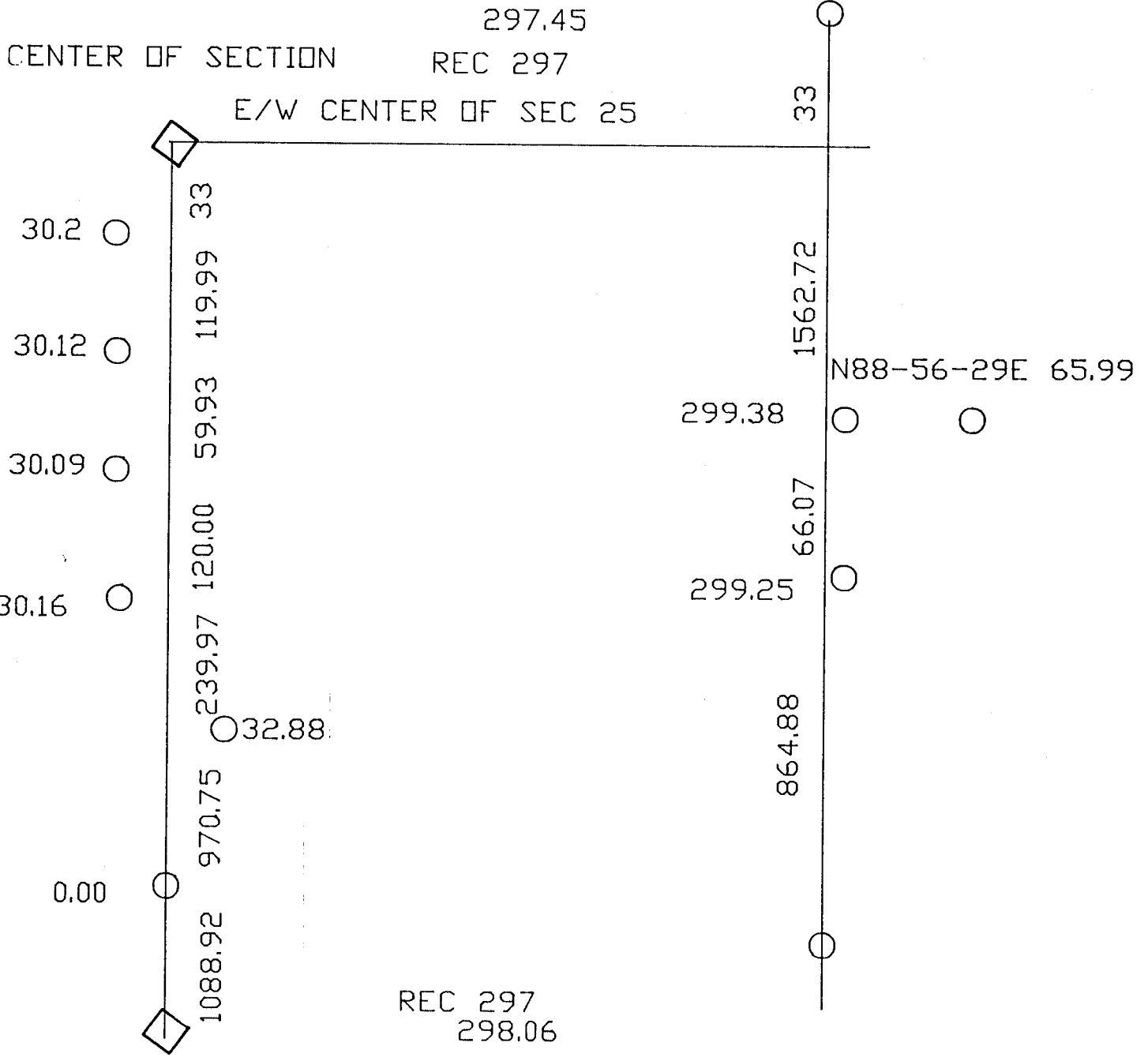
Date microfilmed \_\_\_\_\_

Number of included sheets 1  
CORNER CODE

AFFIX YOUR LAND SURVEYOR SEAL

T23



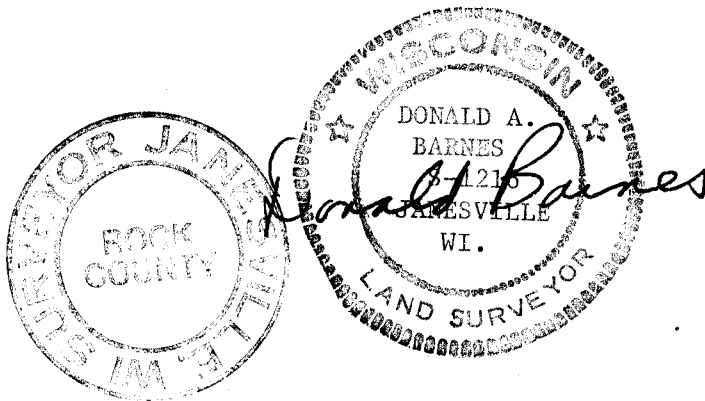


S 1/4 COR  
SEC 25

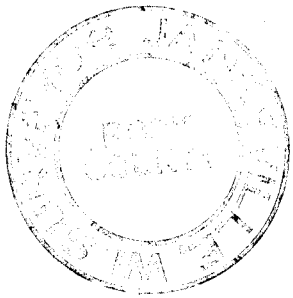
FOUND PROPERTY CORNER  
WEST SIDE OF CORNELIA

DISTANCES NEXT TO PROPERTY CORNERS REFLECT THE OFFSET  
DISTANCE FROM THE CENTER OF SECTION TO THE  
SOUTH QUARTER CORNER OF SECTION 25.

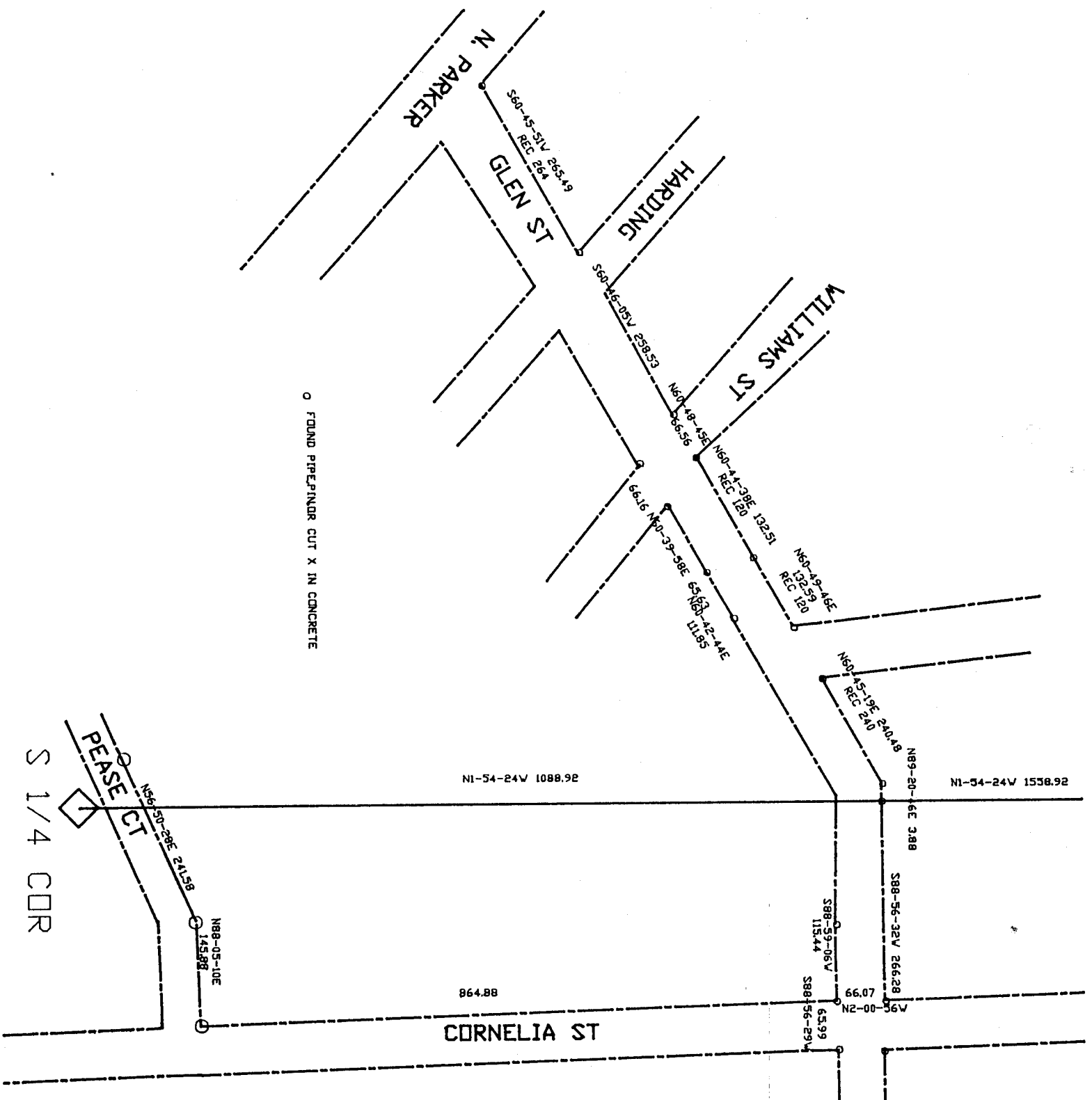
○ FOUND PROPERTY PIPE OR PIN



T23



Donald A. Barnes  
8-2216  
JANUARY 1911  
WI.  
LAND SURVEYOR



S 1/4 COR

T23