

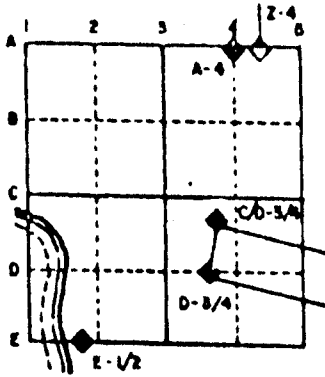
U.S. PUBLIC LAND SURVEY MONUMENT RECORD

For Public Land Survey Corners in the
T. ___ N., R. ___ E.

CORNER CODE INDEX

	1	2	3	4	5	6	7	8	9	10	11	12	13	14	15	16	17	18	19	20	21	22	23	24	25
A																									
B																									
C	6	5	4	3	2	1																			
D																									
E																									
F																									
G																									
H																									
I																									
J	7	8	9	10	11	12																			
K																									
L																									
M	13	14	15	16	17	18																			
N																									
O																									
P																									
Q																									
R																									
S																									
T	19	20	21	22	23	24																			
U																									
V																									
W																									
X																									
Y																									
Z																									

EXAMPLE



JANESVILLE TWP
ROCK COUNTY WI

IF AVAILABLE
STATE PLANE COORDINATES

NAD 27
North (Y) 257,057.88 Elev. (Z) _____
East (X) 2,262,774.11 Zone _____
Hor. Datum _____ Vert. Datum _____

PLACE MONUMENT SYMBOL (◆) AT PROPER
LOCATION ON ABOVE INDEX

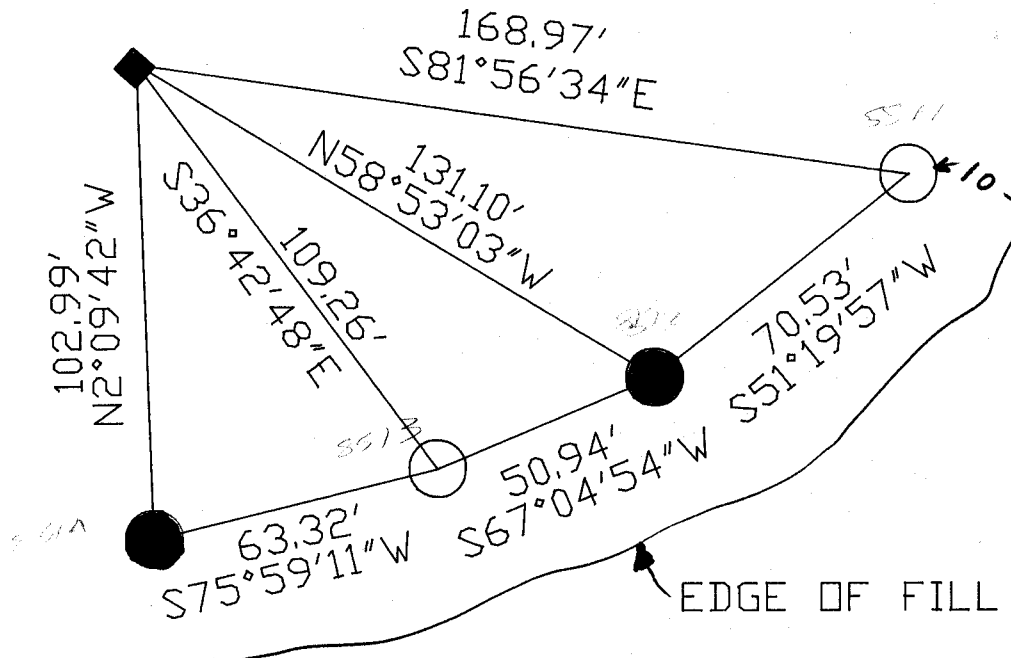
NAD 83(1993) 257,064.95
2,231,237.40

◆ CORNER MONUMENT

○ WITNESS MONUMENT

BEARINGS ARE BASED ON: JANESVILLE TWP PROJECT

DID NOT PLACE A MONUMENT



○ FIELD BOOK #2 PG 62 & 65
1/2 X 24" REROD

● 1/2 X 24" REROD WITH CARSONITE POST

MICROFILMED

SHEET ___ OF ___

CORNER CODE: R23

(B) Describe any record evidence, monument evidence, occupational evidence, testimonial evidence or any other material evidence you considered, and whether the monument was found or placed.

- 1836 LYON ORIG SURVEYOR. SHOWS 2675.31 TO THE NE AND NW CORNERS OF SECTION 25.
- 1870 RUGER VOL 2 PG 32 FOUND OLD STAKE & STUMP OF BOTH BT SET LIMESTONE 16 1/2"X8X2.
- 1874 RUGER VOL 2 PG 177 FOUND OLD STAKE & NE BT & WHERE STUMP OF NW BT HAD BEEN DUG UP. LEFT POINT OF OLD STAKE IN THE GROUND. SET ON TOP OF IT LIMESTONE 14X7X6 SURROUNDED BY 2 LIMESTONES & 1 HH.
- 1880 LEE VOL 2 PG 303 FOUND CORNER BY RUGER. USED CORNER TO SUBDIVIDE SECTION 13.
- 1885 RUGER VOL 2 PG 290 SHOWS DISTANCES TO IT & USED IT TO SUBDIVIDE SECTION 24. SHOWS 2649.74 TO THE CENTER OF SECTION 24.
- 1892 BLEEDORN VOL 2 PG 460. FOUND CORNER BY RUGER.
- 1943 SUNNY PLAT OF SURVEY. FOUND CUT 6X6 STONE MONUMENT AT THE N 1/16TH CORNER OF THE NE 1/4 OF SECTION 25.
- 1958 BATTERMAN JR. CSM VOL 1 PG 4 SHOWS 2231.84 TO PLUG THAT IS TO THE WEST ON THE NORTH LINE OF THE NW 1/4 OF SECTION 25.
- 1962 THOUSAND PLAT OF SURVEY SHOWS 2264.88 TO THE CENTER OF PARKER RD.
- 1963 THOM PLAT OF SURVEY. SHOWS 2264.88 TO THE PLUG THAT IS ON THE NORTH LINE OF THE SECTION AND IS WEST OF THE CORNER.
- 1974 BEATTY CSM VOL 4 PG 177 FOUND PIPE AND SHOWS 1346.75 TO A PIPE ON THE EAST LINE OF THE RAILROAD.
- 1987 BARNES VOL 6 PG SHOWS 1346.75 TO THE PIPE ON THE EAST R/W LINE OF THE RAILROAD. ALSO SHOWS 2231.73 TO THE BRASS PLUG THAT IS ON THE NORTH LINE OF THE NW 1/4 OF THE SECTION. SHOWS 2679.44 TO THE NE CORNER OF SECTION 25 AND 2650.04 TO THE COMPUTED INTERSECTION OF THE 1/4 LINES OF SECTION 24.

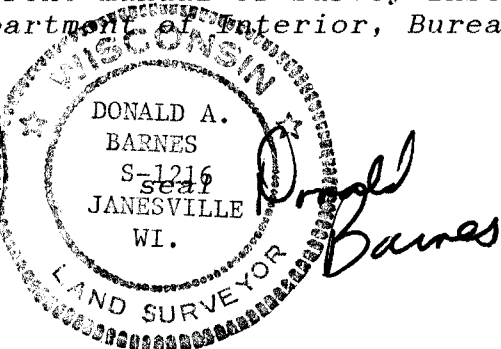
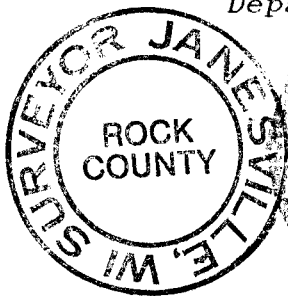
CITY MONUMENT MAP. SHOWS A PIPE 12.68 TO THE WEST AND A PIPE THAT IS 30 TO THE WEST OF THAT PIPE.

DUG AND FOUND OLD CITY LAND FILL. DUG 12' DEEP AND DID NOT FIND ORIGINAL GRADE. CITY CONTACTED THIS OFFICE AND STATED THAT THIS LOCATION WAS ONE OF THE FEDERAL HAZARDOUS SITES. THE FILL IN THIS AREA IS TO BE REMOVED SOMETIME IN 1993. IN 1987 I ESTABLISHED THE CORNER ON LINE WITH THE BRASS PLUG AND THE FOUND PIPE THAT IS ON THE EAST LINE OF THE RAILROAD AT RECORD DISTANCE (1346.75). THIS IS IN HARMONY WITH RUGER'S DISTANCE (2649.74) TO THE CENTER OF SECTION 24 AND HIS DISTANCE OF 2672.51 TO THE NE CORNER OF SECTION 25.

C) Was the corner restored through acceptance of (1) an obliterated evidence location, or, (2) a found perpetuated location?

THE CORNER WAS RESTORED THROUGH ACCEPTANCE OF OBLITERATED EVIDENCE LOCATION.

I, Donald Barnes, hereby certify that the corner points as identified by the corner code index were, in a field survey on, November 29, 1990, established, re-established, monumented, re-monumented, recovered or restored as expressed below and in conformance with the regulations and rules as required in the current manual of survey instructions of the United States Department of Interior, Bureau of Land Management.



COUNTY SURVEYOR FILING DATA

Date of computer entry _____

Date microfilmed _____

Number of included sheets _____
CORNER CODE

AFFIX YOUR LAND SURVEYOR SEAL