

U.S. PUBLIC LAND SURVEY MONUMENT RECORD

For Public Land Survey Corners in:

WI ADMINISTRATIVE CODE A-E 7.08 REQUIREMENT

T. 3 N., R. 12 E

CORNER CODE INDEX

A	1	2	3	4	5	6	7	8	9	10	11	12	13	14	15	16	17	18	19	20	21	22	23	24	25
B																									
C	6																								
D																									
E																									
F	1																								
G		8																							
H																									
J																									
K																									
L	18																								
M		11																							
N																									
O																									
P	19																								
Q		20																							
R																									
S																									
T	30																								
U		29																							
V																									
W																									
X	31																								
Y		32																							
Z																									

JANESVILLE TWP
ROCK COUNTY WI

IF AVAILABLE
ROCK COUNTY COORDINATES PREFERRED

North _____ Elev. _____

East _____

Hor. Datum _____ Vert. Datum _____

LATITUDE _____ ELLIPS. HT. _____

LONGITUDE _____

GPS (X) _____ TRAVERSE (X) _____

BASED ON THE FOLLOWING CONTROL:

PLACE MONUMENT SYMBOL AT PROPER LOCATION ON ABOVE INDEX

CORNER MONUMENT

WITNESS MONUMENT

(a)

BEARINGS ARE BASED ON:

FIELD BOOK _____ PAGE # _____

SHEET 1 OF 5

SHOW A PLAN VIEW DRAWING DEPICTING THE CORNER MONUMENT AND SURROUNDING PHYSICAL FEATURES, INCLUDING THE EXCAVATION AREA AND DEPTH.

PLANNING & ZONING COMMITTEE ADOPTED THE ABOVE FORM ON 12/2/1982

CORNER CODE G-25

5280 SET POST COR SEC 1 & 12 BURR OAK 18 N50 1/2 W
57.42', W. OAK S34 1/2 W 23.76'
LAND ROLLING SECOND RATE SCATTERING W. B &
BURR OAK NOV 29 1835

1870 RUGER REMON. FIELD NOTES (OCT)

NORTH ON WEST LINE OF SW QUARTER SEC 7 ON A VAR 7-22
2658.81 INTERSECTED QUARTER LINE 2.64' EAST OF
QUARTER COR FOUND OLD STAKE AND HARDHEAD
STONE ON COR. COR VAR 7-25

NORTH ON WEST LINE OF NW QUARTER SEC 7 ON VAR 7-40
2650.56 INTERSECTED NORTH BOUNDARY LINE AT 2.97'
EAST OF COR. FOUND STUMPS OF BOTH BEARING
TREES AND STONES ON COR. PLATED BY SELF COR
VAR 7-44

1878 RUGER VOL 2 PG 254 STONE MON VAR 3-14 TO E 1/4 COR SEC
7

1891 BLEEDHORN VOL 2 PG 455 ON WEST LINE OF SW 1/4 SEC 7
PLACED HH 14X9X9 1270.5 FROM SW COR SEC 7. DROVE G.P
33' E OF SET HH.

19?? ? #1573,6614 CALLS FOR MON. USED FOR LINE TO PLACE 2"
PIPE AT INTERSECTION OF E/W & N/S 1/4 SECTION LINES OF
SEC 7. 2640.80 FROM CENTER OF SEC 7 TO E 1/4 COR SEC 7

1951 SUNNY # STATES NOTHING ABOUT MON. 2656 TO CENTER OF
SEC 12 & 5312 TO W 1/4 COR SEC 12

1960 BATTERMAN VOL 4 PG 78 FD CUT STONE REF & REFER. VOL 4
PG 472. NORTH 1504.56 TO R/R SPIKE & 2654.30 TO NW COR
SEC 7

1961 BATTERMAN #5482 FD CUT STONE NORTHERLY 1504.56
ALONG SEC LINE TO SURVEY PT & 2654.30 TO NE COR SEC 12

1962 CHENEY #5493 STATES NOTHING ABOUT MON. SOUTHERLY
526.8 ALONG SEC LINE TO NE PROPERTY COR.

1970 BATTERMAN VOL 4 PG 472 SET R/R OVER W 1/4 COR 7 &
PLACED 2 PIPES WEST ON LINE @ 100.00 & 200.00 FROM
COR.

1978 HURD VOL 5 PG 517 COORDINATES 270,289.96;
2,265,120.645 (PHOTO PROJECT) 2660.23 TO SW COR SEC 7,
& 2653.85 TO NW COR SEC 7

1979 COOPER #01574 AS LOCATED FROM TIES ON RECORD IN
COUNTY SURVEYOR'S OFFICE. 2660.23 TO SW COR SEC 7,
2653.84 TO NW COR SEC 7, ANGLE 179-54-20 @ W 1/4 COR
SEC 7 FROM NW COR SEC 7 TO SW COR SEC 7, ANGLE 86-40-
05 @ NW COR SEC 7 FROM NORTH LINE SEC 7 TO W 1/4 COR
SEC 7, ANGLE 93-05-43 @ SW COR SEC 7 FROM W 1/4 COR SEC
7 TO SOUTH LINE SEC 7

1982 SCHROEDER CSM VOL 10 PG 543 STATES NOTHING ABOUT
MON. SOUTH 70.04 TO NE PROPERTY COR. PROPERTY COR IS
456.80 ALONG SEC LINE & DEDICATED R/W IS 40, 1327.62 TO
N 1/16TH COR OF SE 1/4 SEC 12, SOUTHERLY 70.04 TO NE
PROPERTY COR., & ANGLE 91-57-52 @ E 1/4 COR SEC 12 FROM
EAST LINE SE 1/4 SEC 12 TO E/W 1/4 LINE SEC 12

1982 THOM CSM VOL 11 PG 61 FD COUNTY SURVEYORS MON. USED
FOR LINE. 1270.50 NORTH FROM R/R @ SW COR SEC 12 TO PT
ON SEC LINE.

1982 BARNES VOL 6 PG 243 FD REF PIPES AS SHOWN IN VOL 4 PG
472. FD R/R SPIKE 3.0' DEEP LAYING HORIZONTALLY. SET
POLYSTYRENE MON. CHECKED WITH EXISTING TIES.

SHEET 1 OF 5

CORNER CODE G-25

Donald Barnes

7/27/2004

JA540

- 1982 BARNES FB#1 PG 41 MEASURED NORTH 1503.89 TO FD PK @ RUSSELL RD. ALSO FD PK 5.40 NORTH OF COR.
- 1983 COMBS CSM VOL 11 PG 370 USED FOR LINE. PK 1149.74 ON SEC LINE FROM NE COR SEC 12. ANGLE 85-23 FROM CENTER
- 1984 BARNES HARMONY TWP PROJECT (MAY) OBSERVATION SHEET #22. FD POLY. MON.
- 1984 BARNES HARMONY TWP PROJECT. FD POLY MON. N00-43-58W W 2653.41 TO NW COR SEC 7, S0-49-37E 2660.91 TO SW COR SEC 7.
- 1984 BARNES G-1 FD ALUM. MON. 887.8 ELEV. 270,290.60; 2,265,120.32
- 1984 COMBS CSM VOL 11 PG 650 FD ALUM. PG 370 USED FOR LINE PK 1149.74 ON SEC LINE FROM NE COR SEC 12. ANGLE 85-23 @ PK FROM CENTER OF RUSSELL RD TO NE COR SEC 12
- 1985 LEE #13700 ALUM. MON. WESTERLY 33.02 TO SE PROPERTY COR. LOT IS 25.00 X 25.00 X 25.00 X 25.00. ANGLE @ E 1/4 COR SEC 12 88-06-20 FROM E/W 1/4 LINE TO NE COR SEC 12.
- 1988 BARNES JANESVILLE TWP PROJECT. USED HARMONY TWP DATA. N1-26-22W 2653.36 TO NE COR SEC 12 & S1-31-48E 2660.99 TO SE COR SEC 12.
- 1989 COMBS #12201 STATES NOTHING ABOUT MON. SOUTHERLY 526.8 ALONG SEC. LINE TO NE PROPERTY COR.
- 1990 COMBS CSM VOL 15 PG 6 FD POLY. 2653.74 TO ALUM MON AT NE COR SEC 12 & ANGLE 89-48-50 @ NE COR SEC 12 FROM E 1/4 COR SEC 12 TO ALONG NORTH LINE SEC 12.
- 1995 LATHROP #9399 FD ALUM. MON. 2653.84 TO NE COR SEC 12. ANGLE 88-07-50 @ E 1/4 COR SEC 12 FROM SE PROPERTY COR TO NE COR SEC 12. PROPERTY COR IS 33.02 WESTERLY OF E 1/4 COR. LOT IS 25.0 X 25.0 X 25.0 X 25.0
- 1996 COMBS CSM VOL 19 PG 350 FD ALUM. 2660.63 TO SE COR SEC 12.
- 1996 COMBS CSM VOL 19 PG 374 2660.63 TO SE COR SEC 12.
- 1997 COMBS CSM VOL 20 PG 418 FD POLY ANGLE 89-48-50 @ NE COR SEC 12 FROM E 1/4 COR SEC 12 TO ALONG NORTH LINE SEC 12.
- 1998 LATHROP CSM VOL 21 PG 374 2660.63 TO SW COR SEC 7, ANGLE 90-21-40 @ SW COR SEC 7 FROM W 1/4 COR SEC 7 ALONG SOUTH LINE OF SEC 7.
- 1999 LATHROP CSM VOL 22 PG 485 FD ALUM. 2660.63 TO SE COR SEC 12.
- 2000 THOM BK 32 PG 476 "HARMONY GROVE" FD ALUM 2660.23 TO SE COR SEC 12.
- 2001 COMBS CSM VOL 24 PG 283 FD POLY 2660.63 TO SE COR SEC 12
- 2001 COMBS CSM VOL 25 PG 171 FD ALUM. 2653.62 TO NE COR SEC 12.
- 2001 COMBS #14253 FD ALUM. MON. SOUTH 861.7 TO NE COR PROPERTY COR ON SEC LINE
- 2003 LATHROP CSM VOL 26 PG 140 FD ALUM 2660.63 TO SE COR SEC 12.
- 2003 LATHROP CSM VOL 26 PG 289 FD ALUM 2660.63 TO POLY AT SW COR SEC 7
- 2004 RYAN COMBS VERBAL 2660.63 TO SE COR SEC 12 & 2653.69 TO NE COR SEC 12

Donald Brown

7/27/2004

SHEET 2 OF 5
CORNER CODE **G-25**

JA540

FD POLY MON. 0.3 DEEP. DUG ALONG NW SIDE OF MON. 1.8' DEEP TO VERIFY MON WAS NOT BROKEN. IT WAS IN ONE PIECE. HARMONY TWP DISTANCE OBSERVATION TO MONUMENT DID NOT AGREE WITH CURRENT OBSERVATION TO FD POLY.

C) Was the corner restored through acceptance of (1) an obliterated evidence location, or, (2) a found perpetuated location?

ACCEPTED FD MON. IT IS IN HARMONY WITH THE FD MONUMENTS OF THE SMALL WESTERLY 25X25X25X25 PARCEL. IT APPEARS THE ERROR IN THE OLD DISTANCE OBSERVATION MIGHT HAVE BEEN IN THE REDUCTION FROM SLOPE TO HORIZONTAL. THERE IS A LARGE ELEVATION DIFFERENCE BETWEEN THE LOCATION OF THE PRISM AND EDM.

D) Describe any material discrepancy between the location of the corner as restored or reestablished and the location of that corner as previously restored or reestablished by distance and direction. Show the discrepancy on the plan view drawing under (a), above. Show the distances between the corner as previously restored or reestablished and (1) the corner as restored or reestablished, and (2) to at least 4 of the witness monuments shown on the drawing in (a), above.

NONE

(E) Was the corner reestablished through lost corner proportionate methods? If so, show the method, including the directions and distances to other public land survey corners used as evidence or used for proportioning the corner location.

NO

I, **Donald Barnes**, hereby certify that the corner location as identified by the corner code index was determined by me under my direction and control and that this U.S. Public Land Survey Monument Record is correct and complete to the best of my knowledge and belief.

Donald Barnes

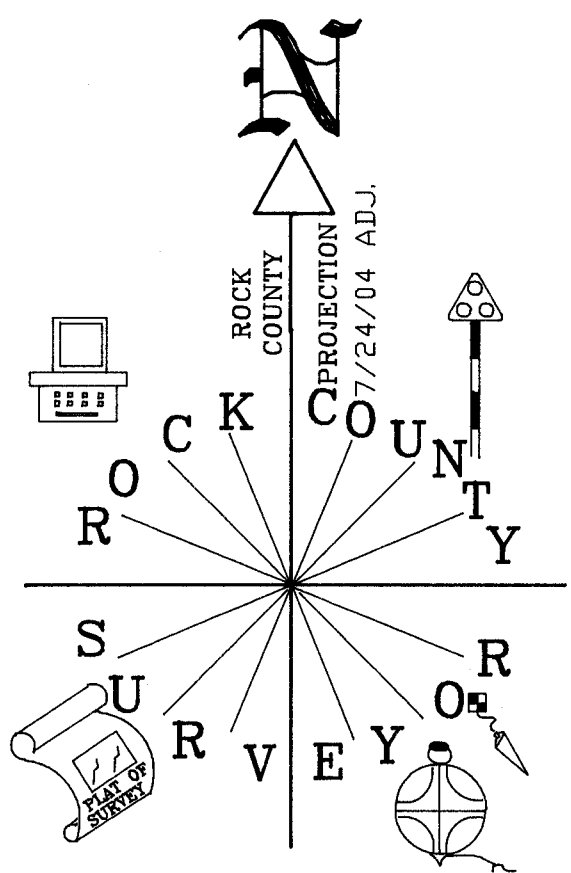
7/27/2004

SHEET 3 OF 5

Emboss

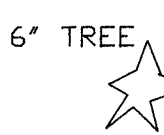
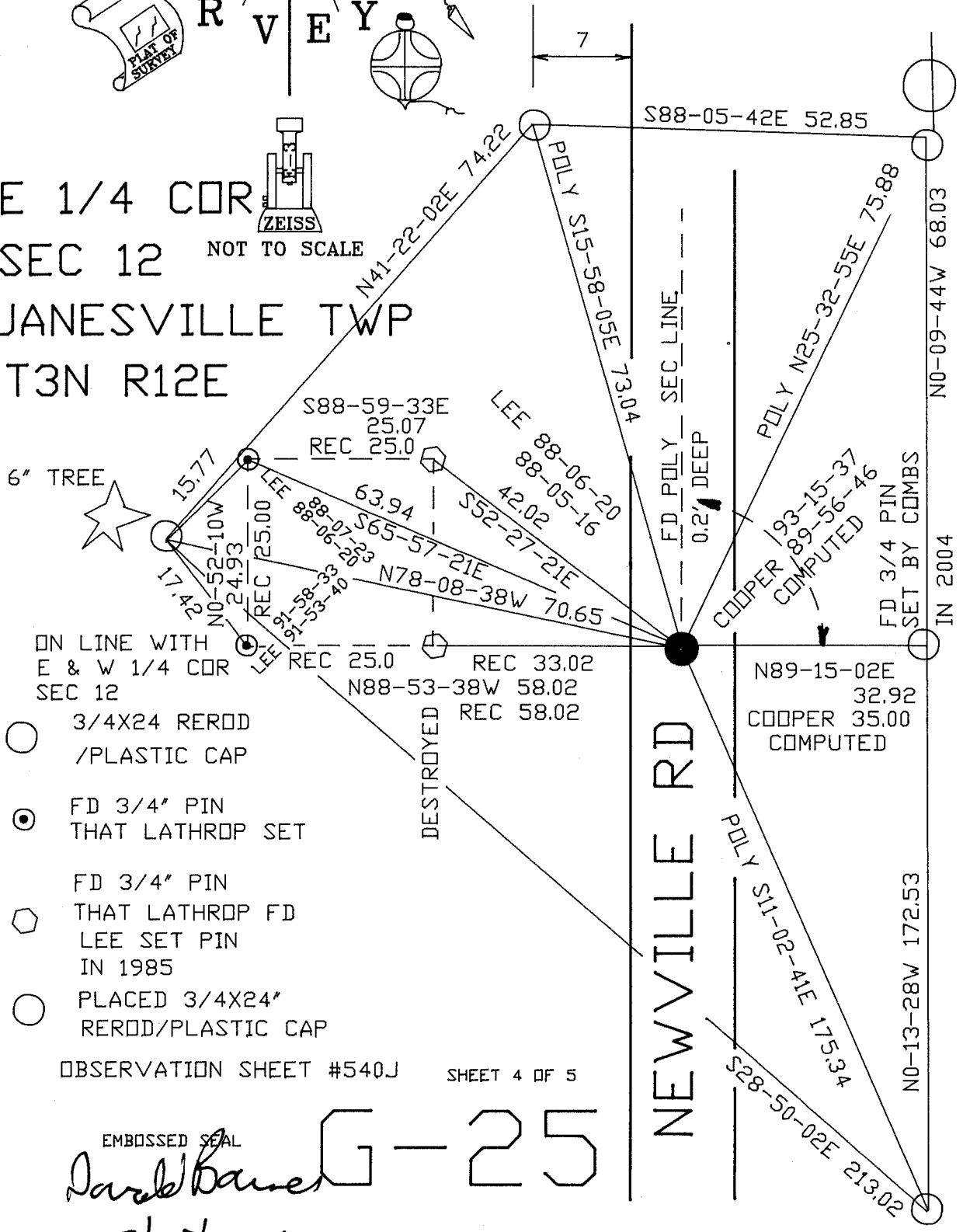
CORNER CODE **G-25**

A.E. 7.08 REQUIREMENT



E 1/4 COR
 SEC 12
 JANESVILLE TWP
 T3N R12E

NOT TO SCALE



- ON LINE WITH E & W 1/4 COR SEC 12
- 3/4X24 REROD /PLASTIC CAP
- FD 3/4" PIN THAT LATHROP SET
- FD 3/4" PIN THAT LATHROP FD LEE SET PIN IN 1985
- PLACED 3/4X24" REROD/PLASTIC CAP

OBSERVATION SHEET #540J SHEET 4 OF 5

EMBOSSED SEAL
David Bauer
 7/27/2004

G-25

SEC 1
JANESVILLE TWP

SEC 6
HARMONY TWP

1951 SUNNY 5294.8

N89-10-24E 2647.82
1986 BARNES REMON N89-48-44W 2647.86
1961 BATTERMAN 2648.98

1951 SUNNY 2649.60
1872 LEE VOL 2 PG 93 2651.88

1/4 CDR

1984 BARNES E-1 86-34-14
LEE 86-34-14
86-34-14
86-34-14
86-34-14

1984 BARNES REMON 93-12-19
1984 BARNES E-1 179-51-50
DLT DBS 179-51-24
179-51-43

S87-27-35E 2566.74
1984 PROJ S87-23-30E 2566.91
1979 COOPER 2567.38

FD POLY &
FD PK

1970 RUGER VAR 4-16 2562.12

1/4 CDR

1/4 CDR

EPK FROM PK 91-37-53
EPK 91-38-02
DLT DBS 91-37-46
91-37-57
91-37-50
89-48-50
89-48-50

1997 COMBS CSM20-418 88-30-47
1990 COMBS CSM15-6 88-30-47
1983 COMBS CSM11-370 88-30-47
1990 COMBS CSM14-373 88-30-47
1961 BATTERMAN 89-23-30
85-25-00
85-25-00

1983 COMBS CSM11-370 85-25-00
1990 COMBS CSM14-373 85-25-00
1961 BATTERMAN 89-23-30
85-25-00

1961 BATTERMAN 89-23-30
85-25-00
85-25-00

1995 LATHROP #9399 88-07-06
1985 LEE #13700 88-07-36
88-07-36
88-07-09
88-07-05
88-06-20

1951 SUNNY 2656
1982 SCHROEDER 1327.62

INT 1/4 LINE 2654.72

N88-55-30W 5311.00
1951 SUNNY 5312

1/4 CDR

1880 LEE VOL 2 PG 303 2660.99
1961 BATTERMAN 2665.61
1986 BARNES REMON N89-24-02W 2665.36
N88-45-50W 2665.34

SEC 7

1979 COOPER #1574 86-39-31
1984 BARNES E-1 86-39-14
PK 86-39-14
TIES 86-39-20
86-38-48

1835 MULLETT 2640
1870 RUGER VAR 7-44 2650.56
1960 BATTERMAN VOL 4-78 2654.30
1961 BATTERMAN #5482 2654.30
1977 HURD 2653.85
1979 COOPER #1574 2653.84

1984 BARNES REMON N00-43-58W 2653.41
1986 BARNES REMON N01-26-22W 2653.36
1990 COMBS CSM15-6 2653.74
1995 LATHROP #9399 2653.84
2001 COMBS CSM25-171 2653.62
2004 RYAN 2653.69
PK N00-48-22W 2653.76
N00-48-22W 2653.82
DLT DBS N00-48-07W 2653.44

2004 RYAN 5314.32
N0-50-49W 5314.49
PK N0-50-49W 5314.43
1988 BARNES TOTAL 5314.35
1984 BARNES TOTAL 5314.32
1979 COOPER 5314.07
1977 HURD 5314.08
1870 RUGER 5309.37

1979 COOPER 2657.55
1979 COOPER #1574 179-54-20
1984 BARNES REMON 179-54-21
1988 BARNES REMON 179-54-34

1979 COOPER #1574 179-54-20
1984 BARNES REMON 179-54-21
1988 BARNES REMON 179-54-34

S87-32-48E 5192.50 PK RUSSELL 179-55-11
1835 MULLETT 2640
1870 RUGER VAR 7-25 2658.81
1977 HURD 2660.23
1979 COOPER #1574 2660.23

1984 BARNES REMON S00-49-37E 2660.91
1986 BARNES S01-31-48E 2660.99
1996 COMBS CSM19-350&374 2660.63
1998 LATHROP CSM21-374 2660.63
1999 LATHROP CSM22-485 2660.63
2000 THOM BK32-476 2660.23
2001 LATHROP CSN VOL 12-140 2660.23
2001 COMBS CSM24-283 2660.63
2003 LATHROP CSM26-140&289 2660.63

FD R/R

SW CDR

SEC 7

1870 RUGER REMON 2534.73
1979 COOPER 2539.05
1984 BARNES REMON S87-43-54E 2538.73
S87-48-10E 2538.70

David Banner
7/27/2004

SEC 12
JANESVILLE TWP

SEC 7
HARMONY TWP

5 OF 5

G-25