

U.S. PUBLIC LAND SURVEY MONUMENT RECORD

For Public Land Survey Corners in:

WI ADMINISTRATIVE CODE A-E 7.08 REQUIREMENT

T. 3 N., R. 12 E

CORNER CODE INDEX

JANESVILLE TWP

ROCK COUNTY WI

IF AVAILABLE

ROCK COUNTY COORDINATES PREFERRED

A	1	2	3	4	5	6	7	8	9	10	11	12	13	14	15	16	17	18	19	20	21	22	23	24	25
B																									
C	6																								
D																									
E																									
F																									
G	1	8																							
H																									
I																									
J																									
K	18	11																							
L																									
M																									
N																									
O																									
P	19	20																							
Q																									
R																									
S																									
T	30	29																							
U																									
V																									
W																									
X	31	32																							
Y																									
Z																									

PLACE MONUMENT SYMBOL AT PROPER LOCATION ON ABOVE INDEX

North _____ Elev. _____

East _____

Hor. Datum _____ Vert. Datum _____

LATITUDE _____ ELLIPS. HT. _____

LONGITUDE _____

GPS (X) _____ TRAVERSE (X) _____

BASED ON THE FOLLOWING CONTROL:

CORNER MONUMENT

WITNESS MONUMENT

(a)

BEARINGS ARE BASED ON:

FIELD BOOK _____ PAGE # _____

SHEET 1 OF 5

SHOW A PLAN VIEW DRAWING DEPICTING THE CORNER MONUMENT AND SURROUNDING PHYSICAL FEATURES, INCLUDING THE EXCAVATION AREA AND DEPTH.

PLANNING & ZONING COMMITTEE ADOPTED THE ABOVE FORM ON 12/2/1982

CORNER CODE E-25

JA533

(B) Describe any record evidence, monument evidence, occupational evidence, testimonial evidence or any other material evidence you considered, and whether the monument was found or placed.

- 1833 HARRISON EAST RANDOM BETWEEN SECTIONS 1 & 12
5280 INTERSECTED RANGE LINE 67.32' SOUTH OF POST LAND
FIRST HALF ROLLING, LAST HALF HILLY & 2ND RATE
TIMBER BURR & WHITE OAK
WEST CORRECTION BETWEEN SECTION 1 & 12
2640 SET QUARTER SECTION POST WHITE OAK 23" N15E
37.62', WHITE OAK 14" S71E 44.88'
5280 SECTION CORNER COPY OF PAGE 59
- 1833 HARRISON EAST RANDOM BETWEEN SECTIONS 1 & 12 VAR
6-10E
5280 INTERSECTED RANGE LINE 67.32' SOUTH OF POST LAND
FIRST HALF ROLLING, LAST HALF HILLY & 2ND RATE
TIMBER BURR & WHITE OAK
WEST CORRECTION BETWEEN SECTION 1 & 12
2640 SET QUARTER SECTION POST WHITE OAK 23" N15E
37.62', WHITE OAK 14" S71E 44.88'
5280 SECTION CORNER
COPY OF PAGE 41
- 1835 MULLETT NORTH ON EAST SIDE SECTION 12
2640 SET QUARTER SECTION POST IN PRAIRIE BURR OAK 10
N1W 577.5'
3630 LEAVE PRAIRIE
5280 SET POST COR SEC 1 & 12 BURR OAK 18 N50 1/2W
57.42', W. OAK S34 1/2W 23.76'
LAND ROLLING SECOND RATE SCATTERING W. B &
BURR OAK
NORTH ON EAST SIDE SECTION 1
2640 SET QUARTER SECTION POST BURR OAK 8" S55W
67.98'; W. OAK 12" N49W 66.0'
5280 SET TEMPY SIX MILE POST LAND ROLLING SECOND
RATE SCATTERING W, B & BURR OAKS. NOV 29, 1835
- 1836 ORSON LYON WEST RANDOM BETWEEN SECTIONS 6 & 7
1815 ENTERED POND BEARING NE & SW
2508 LEFT POND WHICH IS SHALLOW
5278.68 INTERSECTED RANGE LINE 149.82' SOUTH OF POST
(LAND HILLS & 2ND RATE TIMBER BUR WHITE & BLACK
OAK UNDER GROWTH OAK GRASS & WEEDS
EAST CORRECTED BETWEEN SECTIONS 6 & 7
BEARING {BUR OAK 14" S36E 3.96' BUR OAK 8"
N17E 52.14'
2572.68 SET QUARTER SECTION POST {WHITE OAK 30" N60E
64.02; BURR OAK 21S S16E 61.38'
5212.68 SECTION CORNER
- 1860 RUGER VOL 1 PG 133 & #1560, #6612, #1561 SET HH
15X12X9 SURROUNDED BY 7 HH VAR 4-25 TO S 1/4 COR SEC
6, VAR 7-55 2644.78 TO W 1/4 COR SEC 6.
- 18?? RUGER #6611 VAR 4-16 2562.12 TO S 1/4 COR SEC 6?, S 1/4
COR SEC 6 GO SE COR SEC 6 VAR 4-16 2628.78
- 1870 RUGER REMON. FIELD NOTES (OCT)
NORTH ON WEST LINE OF SW QUARTER SEC 7
ON A VAR 7-22
2658.81 INTERSECTED QUARTER LINE 2.64' EAST OF
QUARTER COR FOUND OLD STAKE AND HARDHEAD
STONE ON COR. COR VAR 7-25
NORTH ON WEST LINE OF NW QUARTER SEC 7
ON VAR 7-40
2650.56 INTERSECTED NORTH BOUNDARY LINE AT 2.97'
EAST OF COR. FOUND STUMPS OF BOTH BEARING
TREES AND STONES ON COR. PLATED BY SELF COR
VAR 7-44
NORTH ON WEST LINE OF SW QUARTER SEC 6
ON VAR 7-35

Donald Banes
7/27/2004

SHEET 1 OF 5
CORNER CODE E-25

- 2654.85 INTERSECTED QUARTER LINE 3.3' WEST OF QUARTER COR. FOUND STONES SET BY SELF & STUMPS OF BOTH BEARING TREES. COR VAR 7-31
 WEST ON SOUTH LINE OF SW QUARTER SEC 6
 ON A VAR 4-40' OFFSET NORTH 2.64'
- 2562.12 INTERSECTED WEST BOUNDARY LINE 21.45' SOUTH OF COR. COR VAR 4-16 OCT 22 1870
- 1872 LEE VOL 2 PG 93 & #2161 FD MON. 2651.88 TO S ¼ COR SEC 1.
- 1878 RUGER VOL 2 PG 254 STONE MON
- 1914 KERCH CVK FD MON. 2' DEEP IN CENTER OF ROAD ON LINE AT FENCE. SET 10" HH ON TOP, 2654.34 TO W ¼ COR SEC 6
- 1951 SUNNY STATES NOTHING ABOUT MON 2649.6 TO S ¼ COR SEC 1 & 5294.8 TO SW COR SEC 1
- 1933 SUNNY VOL 3 PG 226 CVK FD MON. PLACED 10" HH ON TOP IN 1914. 2654.34 TO W ¼ COR SEC 6
- 1960 BATTERMAN VOL 4 PG 78 FD CUT STONE MON. & REF. SOUTH 1149.74 TO SET SPIKE.
- 1961 BATTERMAN #5482 DUG & FD MON 3' DEEP 2648.98 TO N ¼ COR SEC 12, 2654.30 TO E ¼ COR SEC 12, SOUTH 1149.74 TO PK ON SEC LINE & CENTER OF R/W LINE, ANGLE 89-23 @ PK FROM CENTER OF R/W LINE TO NE COR SEC 12, ANGLE 94-37 @ PK FROM E ¼ COR SEC 12 TO CENTER OF R/W LINE.
- 1978 HURD VOL 5 PG 517 MAPPING PROJECT. 272,942.976; 2,265,053.834
- 1979 COOPER #1574 COR AS LOCATED FROM COUNTY SURVEYOR. 2567.38 TO N ¼ COR SEC 7, 2653.84 TO W ¼ COR SEC 7, ANGLE 86-40-05 @ NW COR SEC 7 FROM N ¼ COR SEC 7 TO W ¼ COR SEC 7, ANGLE 93-04-50 @ N ¼ COR SEC 7 FROM CENTER OF SEC 7 TO NW COR SEC 7, & 35.05 TO THE EAST IS A PROPERTY COR.
- 1983 COMBS CSM 11 PG 370 FD ALUM. SOUTH 1149.74 TO FD PK. ANGLE 85-23 AT FD PK FROM CENTER OF R/W TO NE COR SEC 12
- 1984 COMBS CSM 11 PG 650 FD ALUM. SOUTH 1149.74 TO FD PK. ANGLE 85-23 AT FD PK FROM CENTER OF R/W TO NE COR SEC 12
- 1984 BARNES E-1 SET POLY. MON. FD 1 REC REFERENCE TIE. ACCEPTED OBLITERATED EVIDENCE. ELEV 969', 267,630.76; 2,265,191.53', ANGLE 86-39-31 (COOPER 86-40-05) @ NW COR SEC 7 FROM N1/4 COR SEC 7 TO W ¼ COR SEC 7, 2566.91 (COOPER 2567.38, RUGER 2562.12) TO N ¼ COR SEC 7, ANGLE 86-34-06 (LEE 86-34-05) @ W ¼ COR SEC 6 FROM E ¼ COR SEC 6 TO NW COR SEC 7, 2656.17 (SUNNY 2654.34, RUGER 2654.85) TO W ¼ COR SEC 6, 2653.41 (COOPER 2653.84, RUGER 2650.56, VOL4-78 2654.3) TO W ¼ COR SEC 7, & ANGLE 179-51-50 @ NW COR SEC 7 FROM W ¼ COR SEC 6 TO W ¼ COR SEC 7. HURD 272,942.98; 2,265,053.83
- 1984 BARNES HARMONY REMON. S87-23-30E 2566.91 TO N ¼ COR SEC 7, N00-35-49W 2656.17 TO W ¼ COR SEC 6, S0-43-58E 2653.41 TO W ¼ COR SEC 7
- 1985 LEE #13700 ALUM. MON. ANGLE 88-06-20 @ E ¼ COR SEC 12 FROM SE PROPERTY COR TO NE COR SEC 12. SE PROPERTY COR IS 33.02 FROM E ¼ COR SEC 12. SE PROPERTY COR IS ON LINE WITH E ¼ COR SEC 12 & SW COR SE ¼ NE ¼ SEC 12.
- 1986 BARNES JANESVILLE REMON. N89-48-44W 2647.86 TO N1/4 COR SEC 12, S1-26-22E 2653.36 TO E ¼ COR SEC 12, N1-17-57W 2656.22 TO E ¼ COR SEC 1.
- 1988 COMBS CSM 13-400 FD ALUM. N1-18W 2655.82 TO E ¼ COR SEC 1 & ANGLE 91-38-05 @ E ¼ COR SEC 1 FROM SE COR SEC 1 TO E/W ¼ LINE.

Dwight Barnes
 7/27/2004

JA533

- 1990 COMBS GSM 14-373 ALUM. MON S1-26-35E 1149.74 TO FD PK, 1504.0 FROM FD PK TO E 1/4 COR SEC 12, N1-18W 100.0 TO PROPERTY COR., ANGLE 85-23-00 AT FD PK FROM CENTER OF R/W LINE TO NE COR SEC 12
- 1990 COMBS GSM 15-6 2653.74 TO W 1/4 COR SEC 12 & 660.54 & ANGLE 89-48-50 FROM W 1/4 COR TO PROPERTY COR.
- 1995 LATHROP #9399 FD ALUM. MON 2653.84 TO E 1/4 COR SEC 12 & ANGLE 88-07-50 @ E 1/4 COR SEC 12 FROM SE PROPERTY COR TO NE COR SEC 12. SE PROP COR IS 33.02 FROM W 1/4 COR SEC 12.
- 1997 COMBS GSM20-418 ALUM ANGLE 89-48-50 FROM W 1/4 COR TO NORTH LINE SEC 12.
- 1999 COMBS BK 32-472 "APPLE RIDGE" FD PK ANGLE 88-31-20 @ NE COR SEC 12 FROM S 1/4 COR SEC 1 TO E 1/4 COR SEC 1, 2655.73 TO E 1/4 COR SEC 1.
- 2001 LATHROP SUB #9890 "APPLE RIDGE" STATES NOTHING ABOUT MON.
- 2001 REIGEL #14303 PK MATCHING TIES. 2656.31 TO W 1/4 COR SEC 6
- 2001 REIGEL #14111 PK MATCHING TIES. 2656.31 TO W 1/4 COR SEC 6
- 2001 COMBS GSM 25-171 FD MASONRY NAIL 2653.62 TO W 1/4 COR SEC 12.
- 2002 COMBS BK 32-540 "APPLE RIDGE FIRST ADDITION" FD PK 2655.73 TO E 1/4 COR SEC 1
- 2002 COMBS BK 32-554 "APPLE RIDGE SECOND ADDITION" FD PK 2655.73 TO E 1/4 COR SEC 1.
- 2004 RYAN COMBS VERBAL 5314.32 TO SE COR SEC 12 & 2653.69 TO E 1/4 COR SEC 12

FD PK AND .06' NORTH FOUND POLY. 0.2' DEEP.

C) Was the corner restored through acceptance of (1) an obliterated evidence location, or, (2) a found perpetuated location?

ACCEPTED FD POL. MON.

D) Describe any material discrepancy between the location of the corner as restored or reestablished and the location of that corner as previously restored or reestablished by distance and direction. Show the discrepancy on the plan view drawing under (a), above. Show the distances between the corner as previously restored or reestablished and (1) the corner as restored or reestablished, and (2) to at least 4 of the witness monuments shown on the drawing in (a), above.

THERE IS A DISCREPANCY BETWEEN THE POLY AND THE FD PK. THE RECORD DISTANCES TO THE TIES DID NOT CHECK WELL.

(E) Was the corner reestablished through lost corner proportionate methods? If so, show the method, including the directions and distances to other public land survey corners used as evidence or used for proportioning the corner location.

I, **Donald Barnes**, hereby certify that the corner location as identified by the corner code index was determined by me under my direction and control and that this U.S. Public Land Survey Monument Record is correct and complete to the best of my knowledge and belief.

Seal

Donald Barnes

Emboss

7/27/2004

SHEET 3 OF 5

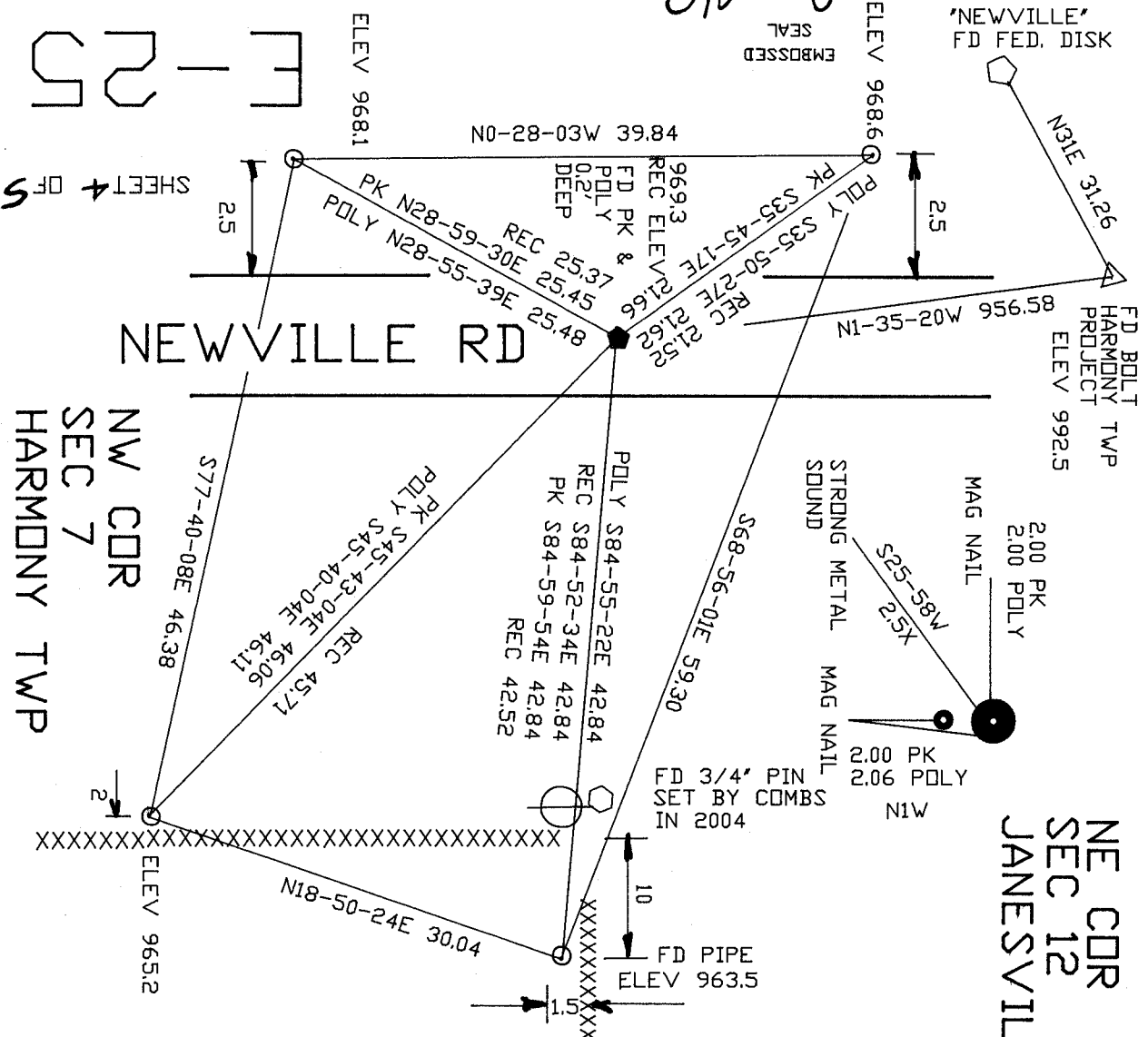
CORNER CODE

E-25

A.E. 7.08 REQUIREMENT

7/27/2004

David Ramos



F-25

SHEET 4 OF 5

NW CDR
SEC 7
HARMONY TWP

NE CDR
SEC 12
JANESVILLE TWP

ROCK COUNTY
PROJECTION
7/23/2004
ADJUSTMENT

SURVEY OF ROCK COUNTY

NOT TO SCALE
OBSERVATION SHEET #15333J
O FD 1" PIPE
VOL 4 PG 79

SHEET 4 OF 5

E-25

SEC 1
JANESVILLE TWP

1988 COMBS CSM13-400 91-38-05
91-38-25

1986 BARNES REMON
1999 COMBS BK32-472

1951 SUNNY 5294.8
N89-10-24E 2647.82
1986 BARNES REMON N89-48-44W 2647.86
1961 BATTERMAN 2648.98
1951 SUNNY 2649.60
1872 LEE VOL 2 PG 93 2651.88

NW COR

1/4 COR

1984 BARNES E-1
LEE 86-34-14
86-34-06
86-34-05

1984 BARNES REMON 93-12-19
1984 BARNES E-1 179-51-50
93-12-10
179-51-24
DLD DBS 179-51-43

SEC 6
HARMONY TWP

S87-27-35E 2566.74
1984 PROJ S87-23-30E 2566.91
1979 COOPER 2567.38
1977 HURD 2566.57
1870 RUGER VAR 4-16 2562.12

1/4 COR

1/4 COR

epk FROM PK 91-37-55
epk 91-38-02
DLD DBS 91-37-46
91-37-57
1997 COMBS CSM20-418 89-48-50
1990 COMBS CSM15-6 89-48-50

1983 COMBS CSM11-370
1990 COMBS CSM14-373
1961 BATTERMAN #5482
1149.76 PK-PK NO-48-47W TIE
1149.97 NO-48-15W PK
1149.82 NO-48-15W PK
1149.74 1990 COMBS CSM14-373
1149.74 COMBS CSM11-370
1149.74 1984 COMBS CSM11-650
1149.74 1983 COMBS CSM11-370
1149.64 1979 COOPER
1149.74 1961 BATTERMAN #5482
1149.74 1960 BATTERMAN VOL4-78

1995 LATHROP #9399
1985 LEE #13700
DLD TIES 88-07-06
88-07-36
88-07-09
88-07-05
88-06-20
2004 TIES @ RUSSEL RD 1503.85
2004 FD PK NO-48-32W 1504.00
1990 COMBS CSM14-373 1504.0
1982 BARNES FB1-41 1503.89
1979 COOPER 1504.20
1961 BATTERMAN #5482 1504.56
1960 BATTERMAN 1504.56

1951 SUNNY 2656
1982 SCHROEDER 1327.62
INT 1/4 LINE 2654.72
N88-55-30W 5311.00
1951 SUNNY 5312

1/4 COR

1880 LEE VOL 2 PG 303 2660.99
1961 BATTERMAN 2665.61
1986 BARNES REMON N89-24-02W 2665.36
N88-45-50W 2665.34

FD R/R
SW COR
SEC 7

SEC 7

1979 COOPER #1574
1984 BARNES E-1
PK 86-39-31
TIES 86-39-20
86-38-48
DLD DBS 86-39-31
86-39-14
86-40-05
1979 COOPER 93-04-50
93-05-37

1835 MULLETT 2640
1870 RUGER VAR 7-44 2650.56
1960 BATTERMAN VOL4-78 2654.30
1961 BATTERMAN #5482 2654.30
1977 HURD 2653.85
1979 COOPER #1574 2653.84
1984 BARNES REMON N00-43-58W 2653.41
1986 BARNES REMON N01-26-22W 2653.36
1990 COMBS CSM15-6 2653.74
1995 LATHROP #9399 2653.84
2001 COMBS CSM25-171 2653.62
2004 RYAN 2653.69
PK NO-48-22W 2653.76
N00-48-22W 2653.82
DLD DBS N00-48-07W 2653.44
2004 RYAN 5314.32
N0-50-49W 5314.49
PK NO-50-49W 5314.43
1988 BARNES TOTAL 5314.35
1984 BARNES TOTAL 5314.32
1979 COOPER 5314.07
1977 HURD 5314.08
1870 RUGER 5309.37

540
1/4 COR

S87-32-48E 5192.50 PKRUSSELL 179-55-11

1835 MULLETT 2640
1870 RUGER VAR 7-25 2658.81
1977 HURD 2660.23
1979 COOPER #1574 2660.23
1984 BARNES REMON S00-49-37E 2660.91
1986 BARNES S01-31-48E 2660.99
1996 COMBS CSM19-350&374 2660.63
1998 LATHROP CSM21-374 2660.63
1999 LATHROP CSM22-485 2660.63
2000 THDM BK32-476 2660.23
2001 LATHROP CSM VOL 12-140 2660.63
2001 COMBS CSM24-283 2660.63
2003 LATHROP CSM26-140&289 2660.63
DLD DBS S00-53-30W 2661.01
S00-53-16E 2660.67
2004 RYAN 2660.63

1998 LATHROP CSM21-374
1979 COOPER #1574
DLD DBS 93-05-20
93-05-06
90-21-40
93-05-43

1/4 COR

1870 RUGER REMON 2534.73
1979 COOPER 2539.05
1984 BARNES REMON S87-43-54E 2538.73
S87-49-10E 2538.70

Donald Barnes
7/27/04

SEC 12
JANESVILLE TWP

1982 SCHROEDER 91-57-47
91-57-46
91-57-46

1986 TWP PROJ 87-52-14
87-52-34

SEC 7
HARMONY TWP