

# U.S. PUBLIC LAND SURVEY MONUMENT RECORD

For Public Land Survey Corners in:

WI ADMINISTRATIVE CODE A-E 7.08 REQUIREMENT

T. 3N., R. 12E

### CORNER CODE INDEX

A	1	2	3	4	5	6	7	8	9	10	11	12	13	14	15	16	17	18	19	20	21	22	23	24	25
B																									
C	6					5				A				3				2						1	
D																									
E																									
F																									
G	7					8				9				10				11						12	
H																									
J																									
K	18					17				16				15				14						13	
L																									
M																									
N																									
O	19					20				21				22				23						24	
P																									
Q																									
R																									
S	30					29				28				27				26						25	
T																									
U																									
V																									
W																									
X	31					32				33				34				35						36	
Y																									
Z																									

JANESVILLE TWP  
ROCK COUNTY WI

IF AVAILABLE  
ROCK COUNTY COORDINATES PREFERRED

North \_\_\_\_\_ Elev. \_\_\_\_\_

East \_\_\_\_\_

Hor. Datum \_\_\_\_\_ Vert. Datum \_\_\_\_\_

LATITUDE \_\_\_\_\_ ELLIPS. HT. \_\_\_\_\_

LONGITUDE \_\_\_\_\_

GPS (X) \_\_\_\_\_ TRAVERSE (X) \_\_\_\_\_

BASED ON THE FOLLOWING CONTROL:

PLACE MONUMENT SYMBOL  AT PROPER LOCATION ON ABOVE INDEX

CORNER MONUMENT

WITNESS MONUMENT

(a)

BEARINGS ARE BASED ON:

FIELD BOOK \_\_\_\_\_ PAGE # \_\_\_\_\_

SHEET 1 OF 3

SHOW A PLAN VIEW DRAWING DEPICTING THE CORNER MONUMENT AND SURROUNDING PHYSICAL FEATURES, INCLUDING THE EXCAVATION AREA AND DEPTH.

PLANNING & ZONING COMMITTEE ADOPTED THE ABOVE FORM ON 12/2/1982

CORNER CODE A-21

\* JA511

(B) Describe any record evidence, monument evidence, occupational evidence, testimonial evidence or any other material evidence you considered, and whether the monument was found or placed.

- 1836 MULLETT VAR 8-20 EAST WEST ON SOUTH SIDE SECTION 36  
SET POST COR SECTIONS 35 & 36 BURR OAK 10 N49W 2.05, BURR OAK N86E 14
- 1836 LYON ORIG NORTH BETWEEN SECTIONS 1 & 2  
INTERSECTED NORTH BOUNDARY 26.4' EAST OF POST SET COR TO SECTIONS 1  
& 2. BUR OAK 18 S82 1/2E 37, BUR OAK 12 S16W 71
- 1870 RUGER VOL 2 PG 20 CALLS FOR NE COR 26.4' EAST OF SE COR SEC 35. 2658.48  
VAR 7-10 TO N 1/4 COR SEC 2. N 1/4 COR SEC 2 IS MIDWAY & ON LINE WITH NE  
& NW CORNERS OF SEC 2.
- 1872 LEE VOL 2 PG 93 AT NE COR SEC 2 SET HH 10X6X4. 1.98' WEST OF SLUICE LOG  
IN RD. FD STUMP OF EAST B.T. SHOWS NE COR SEC 2 AS EAST OF SE COR SEC  
35. VAR 6-50 2623.50' TO N 1/4 COR SEC 1. N 1/4 COR SEC 1 IS MIDWAY & ON  
LINE BETWEEN NE & NW CORNERS OF SEC 1.
- 1875 RUGER VOL 2 PG 190 BLACK OAK TREE 7" IN DIAMETER MARKED WITH 3  
HACKS ON EACH SIDE OF THE 4 SIDES. SEE BK 2 PG 1 & 3. 2641.76' VAR 5-48 TO  
W 1/4 COR SEC 36.
- 1875 RUGER VOL 2 PG 188 FD WHERE STUMPS OF B.T.S TO COR FOR FULTON HAD  
BEEN DUG UP. THE COR FOR FULTON HAD BEEN DUG UP. THE COR FOR  
FULTON IS 26.4' WEST OF COR FOR JANESVILLE. BL. OAK TREE 7" IN DIA AT  
COR FOR FULTON. MARKED SAID TREE BY CUTTING 3 HACKS ON EACH OF  
THE 4 SIDES. 2641.76' VAR 5-48 TO E 1/4 COR SEC 35.
- 1939 SUNNY VOL 3 PG 446 SE COR SEC 35 SET 2"X4" C.I. ROUND MON. IN CONC.  
PVMT. NORTH CORNER OF SEC 1 & 2 JANESVILLE TWP SET 2X36 IRON PIPE  
MON FOR COR. REFERENCED BOTH CORNERS. 2612.3 FROM NW COR SEC 1  
TO FENCE AT N 1/4 COR SEC 1. SHOWS SE COR SEC 35 NEAR WEST EDGE OF  
PVMT. 2646.2 FROM SE COR SEC 35 TO E 1/4 COR SEC 35. 2914.1 FROM NE COR  
SEC 2 TO E 1/4 COR SEC 2.
- 1965 BATTERMAN JR. VOL 4 PG 220 FD BRASS PLUG AT SE COR SEC 35, FD PIPE AT  
NW COR SEC 1, & REFERENCED SAME. 26.41 BETWEEN MONUMENTS.
- 1977 BARNES VOL 5 PG 373 SE COR SEC 35 FD ROUND C.I. MON. & REFERENCED  
SAME. NE COR SEC 2 FD 1" PIPE IN MON. BOX IS 26.48' EAST OF CI.
- 1980 BARNES VOL 6 PG 17 COMPOSITE OF RECORD DISTANCES.
- 1982 LEUENBERGER VOL 6 PG 365 2647.21 FROM SE TO E 1/4 COR SEC 35.
- 1987 BARNES REMONUMENTATION. N89-03-32E 2619.62 FROM NW COR SEC TO N 1/4  
COR SEC 1 & N88-54-12E 2619.46 FROM N 1/4 COR TO NE CORNERS OF SEC 1, S0-  
39-52E 2914.99 FROM NE TO E 1/4 COR OF SEC 2, & S89-09-52W 26.74 FROM NE  
COR SEC 2 TO SE COR SEC 35.
- 1987 COMBS VOL 6 PG 365 2662.821' FROM SE COR SEC 35 TO S 1/4 COR SEC 35 & N1-  
20-37W 2647.21 TO E 1/4 COR SEC 35.

FOUND PIPE IN MON. BOX AT THE NE COR OF SEC 2 JANESVILLE TWP. & ALUM. MON  
AT THE SE COR SEC 35 FULTON TWP.

C) Was the corner restored through acceptance of (1) an obliterated evidence location, or, (2) a found  
perpetuated location?

ACCEPTED FOUND MONUMENTS AS PERPETUATED LOCATION

Donald Barnes  
May 12, 1999

A-21

D) Describe any material discrepancy between the location of the corner as restored or reestablished and the location of that corner as previously restored or reestablished by distance and direction. Show the discrepancy on the plan view drawing under (a), above. Show the distances between the corner as previously restored or reestablished and (1) the corner as restored or reestablished, and (2) to at least 4 of the witness monuments shown on the drawing in (a), above.

NONE

(E) Was the corner reestablished through lost corner proportionate methods? If so, show the method, including the directions and distances to other public land survey corners used as evidence or used for proportioning the corner location.

NO

I, Donald Barnes, hereby certify that the corner location as identified by the corner code index was determined by me under my direction and control and that this U.S. Public Land Survey Monument Record is correct and complete to the best of my knowledge and belief.

seal

Number of included sheets **1**

emboss

*Donald Barnes*  
*May 12, 1999*

CORNER CODE **A-21**

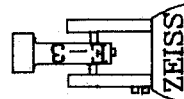
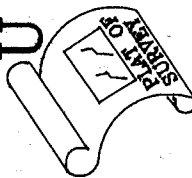
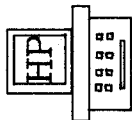
A-E 7.08 REQUIREMENT

**A**

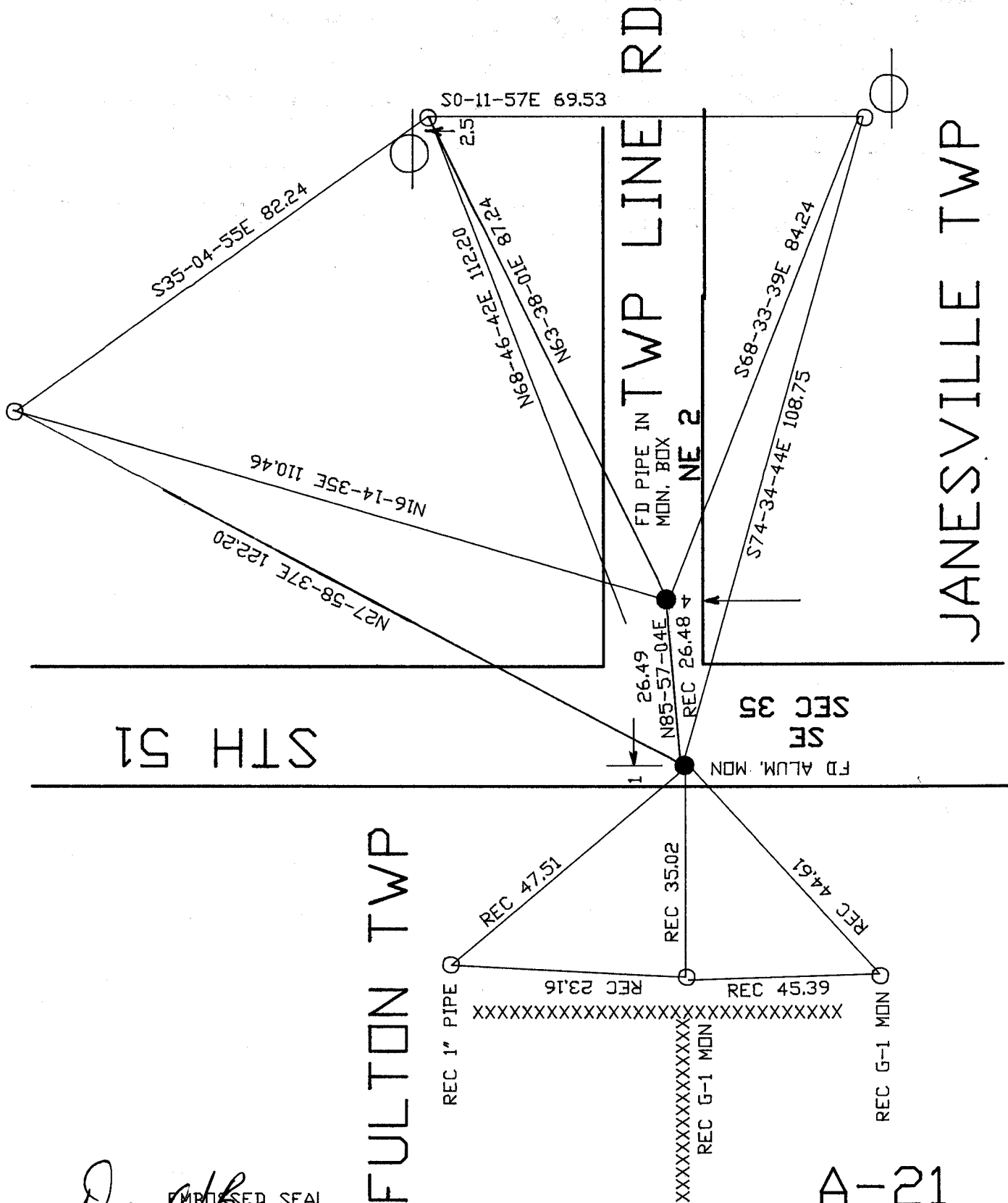
ASSUMED PROJECTION

ROCK COUNTY

SURVEY



14" TREE



STH 51

FULTON TWP

JANESVILLE TWP

Donald Barnes  
EMBOSSED SEAL  
May 12, 1999

A-21