

# U.S. PUBLIC LAND SURVEY MONUMENT RECORD

For Public Land Survey Corners in:

WI ADMINISTRATIVE CODE A-E 7.08 REQUIREMENT

T. 1 N., R. 11 E

### CORNER CODE INDEX

A	1	2	3	4	5	6	7	8	9	10	11	12	13	14	15	16	17	18	19	20	21	22	23	24	25
B	6																								
C	8	9	A	B																					
D																									
E																									
F	1	8	9	10	11	12																			
G																									
H																									
J																									
K	18	17	16	15	14	13																			
L																									
M																									
N																									
O																									
P	19	20	21	22	23	24																			
Q																									
R																									
S																									
T	30	29	28	27	26	25																			
U																									
V																									
W																									
X	31	32	33	34	35	36																			
Y																									
Z																									

NEWARK TWP  
ROCK COUNTY WI

IF AVAILABLE  
ROCK COUNTY COORDINATES PREFERRED

North \_\_\_\_\_ Elev. \_\_\_\_\_

East \_\_\_\_\_

Hor. Datum \_\_\_\_\_ Vert. Datum \_\_\_\_\_

LATITUDE \_\_\_\_\_ ELLIPS. HT. \_\_\_\_\_

LONGITUDE \_\_\_\_\_

GPS (X) \_\_\_\_\_ TRAVERSE (X) \_\_\_\_\_

BASED ON THE FOLLOWING CONTROL:

PLACE MONUMENT SYMBOL  AT PROPER LOCATION ON ABOVE INDEX

 CORNER MONUMENT

 WITNESS MONUMENT

(a)

BEARINGS ARE BASED ON:

OBSERVATION SHEET

FIELD BOOK \_\_\_\_\_ PAGE # \_\_\_\_\_

SHEET 1 OF 3

SHOW A PLAN VIEW DRAWING DEPICTING THE CORNER MONUMENT AND SURROUNDING PHYSICAL FEATURES, INCLUDING THE EXCAVATION AREA AND DEPTH.

PLANNING & ZONING COMMITTEE ADOPTED THE ABOVE FORM ON 12/2/1982

CORNER CODE 213/14

Ne4056

(B) Describe any record evidence, monument evidence, occupational evidence, testimonial evidence or any other material evidence you considered, and whether the monument was found or placed.

1832 LYONS PG 2 EAST ALONG THE SOUTH SIDE OF SEC 33. VAR 6-50E

BUR 2640 SET POST FOR 1/4 SECTION CORNER. BLACK OAK 6 N70E 148.5' OAK 15 N82W 114.18'

5280 SET A POST FOR CORNER TO SECTIONS 33 & 34 BUR OAK 12 N14E 31.02 BUR OAK 15 N34W 87.12'

PG 3 EAST ALONG THE SOUTH SIDE OF SEC 34 VAR 6-50E

2640 SET POST FOR 1/4 SECTION CORNER BLACK OAK 26 N50W 99.66'; BLACK OAK 24 N21E 31.02'

5134.8 TO A SPRING RUN 1.32' C NORTH

5280 SET POST FOR CORNER TO SEC 34 & 35 BUR OAK 17 N53W 64.02'; BUR OAK 12 N61E 85.14' LAND ROLLING 3RD RATE AND THINLY WOODED WITH OAK

1834 MILLER PG 19 NORTH BETWEEN SECS 33 & 34

2415.6 BUR OAK 12 IN DIA

2640 SET 1/4 SEC POST BUR OAK 18 S67E 16.5'; BUR OAK 12 N58W 132.66'

2838 ENTER MARSHY GROUND

3162.72 BROOK NE 1.32'

5280 SET POST COR SEC 33,34,27,28 IN MOUND OF EARTH AND SOD. MARCH 9, 1834

1840 ORIG GOV PLAT OF ILL. SHOWS SW COR SEC 33 653.4' WEST OF NW COR SEC 23 T29N R11E.

1840 SPAULDING ILLINOIS ORIG SURVEYOR (JAN & FEB)

PAGE 2

MEASURING CHAIN COMPARED WITH THE STANDARD CHAIN AND FOUND TO BE OF THE RIGHT LENGTH ADJUST MY COMPASS AT 6-53 VARIATION EAST TO AGREE WITH THE 3RD PRINCIPAL MERIDIAN ALONG THE EAST BOUNDARY OF TOWNSHIP 28 NORTH RANGE 11 EAST OF THE 4TH PRINCIPAL MERIDIAN.

FIELD BOOK PG 174 & 175

NORTH BETWEEN SECTIONS 23 & 24 TOWNSHIP 29 NORTH RANGE 11 EAST OF THE 4TH PRINCIPAL MERIDIAN

VARIATION 6-53 EAST

991.32 A BUR OAK 14 INCHES IN DIAMETER

1531.2 INTERSECT THE BASE LINE OF WISCONSIN TERRITORY AND NORTH BOUNDARY OF THE STATE OF ILLINOIS 653.4' EAST OF THE CORNER TO SECTIONS 33 & 34 IN TOWNSHIP ONE NORTH RANGE 11 EAST OF THE 4TH PRINCIPAL MERIDIAN AND AT SAID INTERSECTION SET A POST FOR CORNER SECTIONS 23 & 24 TOWNSHIP 29 NORTH RANGE 11 EAST

PAGE 175

OF THE 4TH PRINCIPAL MERIDIAN FROM WHICH POST A BURR OAK 10 INCHES IN DIAMETER BEARS S59W 35.64' AND A BUR OAK 20 INCHES IN DIAMETER BEARS S56-45E 38.94' DISTANT. LAND HIGH AND ROLLING BLACK AND BURR OAK SECOND RATE SOIL NOT FOR CULTIVATION.

EAST ON A RANDOM LINE ALONG THE SOUTH BOUNDARY

OF SECTION 34 TOWNSHIP ONE NORTH RANGE 11 EAST OF THE

4TH PRINCIPAL MERIDIAN VARIATION 6-53 E FROM THE CORNER TO SECTION 33 AND 34

2655.84 I FELL 23.76' NORTH OF THE POST FOR QUARTER SECTION CORNER. MY OBJECT IN RUNNING THIS LINE WAS TO ASCERTAIN ITS LENGTH AND BEARING. FEBRUARY 22, 1840

Donald Barnes

SHEET 1 OF 3

CORNER CODE

Z-13/14

7-20-01

NE4056

- 1863 LOCKE VOL 1 PG 176 VAR 6-00 ALONG SW & SE ¼ LINE SEC 34, VAR 5-45 2663.76' TO W ¼ COR SEC 34. FOUND GOV. STAKE. W ¼ COR SEC 34 ON LINE & MIDWAY BETWEEN NW & SW CORNERS OF SEC 34. S ¼ COR SEC 34 ON ON LINE & MIDWAY BETWEEN SW & SE CORNERS OF SEC 34.
- 1865 LOCKE VOL 1 PG 227 & 3274 VAR 5-56 2650.56' TO S ¼ COR SEC 33, VAR 5-45 2647.92' TO W 1/4 COR SEC 34. STATES NOTHING ABOUT MON.
- 1871 COLLIN'S REMONUMENTATION NOTES  
PG 174 WEST ON SOUTH LINE OF 33 VARIATION 5-30
- 2651.88 INTERSECT 1/4 LINE 5.28' SOUTH OF CORNER SET 1/4 STONE BY WITNESS TREE CORRECTED 5-37  
CONTINUED WEST VARIATION 6
- 5297.16 INTERSECT SECTION LINE 4.62' SOUTH OF CORNER SET STONE FOR CORNER OF 32 & 33 BY STUMPS OF WITNESS TREES CORRECTED VARIATION 6-06  
PG 162 NORTH BETWEEN 33 & 34 VARIATION 5
- 2655.84 INTERSECT 1/4 LINE 17.82' EAST OF CORNER SET 1/4 STONE IN PLACE OF STAKE AND STONE AGREEING WITH STUMPS OF WITNESS TREES. CORRECTED VARIATION 4-36.  
CONTINUED NORTH VARIATION 5
- 5315.64 SET STONE FOR CORNER OF 27,28,33,34 IN OLD MOUND.  
PG 161 WEST ON SOUTH LINE OF 34 VARIATION 5-30
- 2649.9 INTERECT 1/4 LINE 5.28' SOUTH OF CORNER. SET 1/4 STONE BY STUMP AND ROOTS OF WITNESS TREES. CORRECTED VARIATION 5-37  
CONTINUED WEST VARIATION 5-30
- 5297.82 INTERSECT SECTION LINE 6.6' NORTH OF CORNER. SET STONE FOR CORNER OF 33, 34 IN PLACE OF STAKE AND STONES AGREEING WITH STUMPS OF WITNESS TREES. CORRECTED VARIATION 5-21
- 1920? TISSANDIER SET CONC. MON. WITH BRASS PLUG AT NW COR SEC 24. 3291.00' TO NE COR SEC 24, 5265.80' TO NW COR SEC 23, & ANGLE OF 179-58-18 @ NW COR SEC 24 FROM NE COR SEC 24 TO NW COR SEC 24.
- 1998 HOULE CSM 21 PG 260 2655.06' FROM SW COR SEC 34 TO W 1/4 COR SEC 34

FD CONC. MON. 9' EAST OF N/S FENCE & 3' SOUTH OF E/W FENCE. ALSO FD ¾" PIN UNDER E/W FENCE ABOUT 0.5 WEST OF CONC. MON.


C) Was the corner restored through acceptance of (1) an obliterated evidence location, or, (2) a found perpetuated location?

DID NOT ACCEPT NOR REJECT MON.

D) Describe any material discrepancy between the location of the corner as restored or reestablished and the location of that corner as previously restored or reestablished by distance and direction. Show the discrepancy on the plan view drawing under (a), above. Show the distances between the corner as previously restored or reestablished and (1) the corner as restored or reestablished, and (2) to at least 4 of the witness monuments shown on the drawing in (a), above.

SEE SKETCH FOR DISCREPANCY BETWEEN CONC. MON & ¾" PIN.

I, Donald Barnes, hereby certify that the corner location as identified by the corner code index was determined by me under my direction and control and that this U.S. Public Land Survey Monument Record is correct and complete to the best of my knowledge and belief.

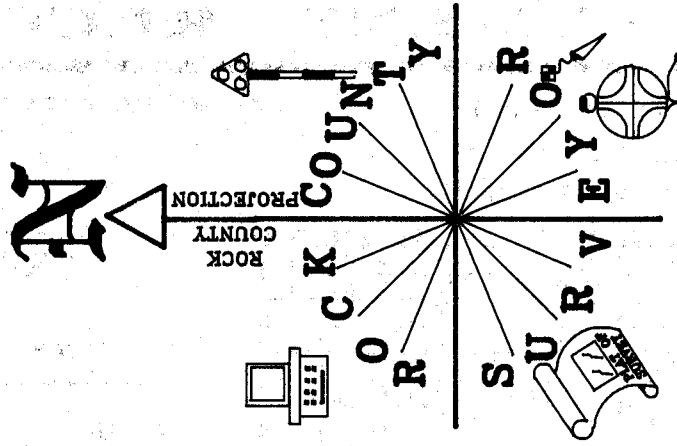
seal  
  
emboss

SHEET 2 OF 3

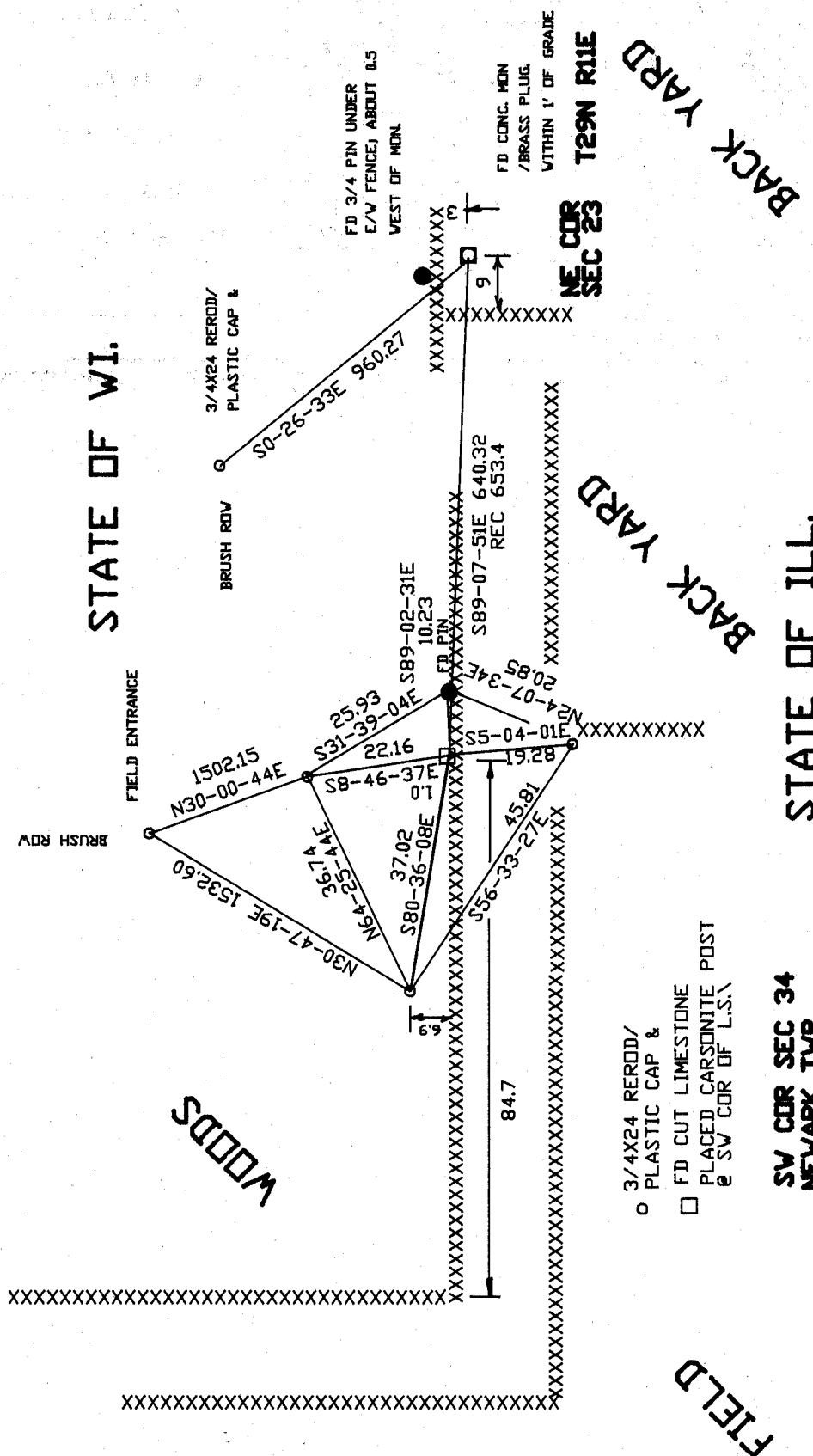
7-20-01

CORNER CODE Z-13/14

A-E 7.08 REQUIREMENT



NOT TO SCALE  
OBSERVATION SHEETS #854, #853, & #852



STATE OF WI.

STATE OF ILL.

- 3/4X24 REROD/  
PLASTIC CAP &
- FD CUT LIMESTONE  
PLACED CARBONITE POST  
e SW COR OF L.S.

*Donald Barnes*  
EMBOSSSED  
SEAL

7-20-01

SHEET 3 OF 3  
Z-13/14