

U.S. PUBLIC LAND SURVEY MONUMENT RECORD

For Public Land Survey Corners in:

WI ADMINISTRATIVE CODE A-E 7.08 REQUIREMENT

T. 1 N., R. 11 E

CORNER CODE INDEX

A	2	3	4	5	6	7	8	9	10	11	12	13	14	15	16	17	18	19	20	21	22	23	24	25
B	6																							
C																								
D																								
E																								
F																								
G	1																							
H																								
I																								
J																								
K																								
L	18																							
M																								
N																								
O																								
P	19																							
Q																								
R		20																						
S																								
T																								
U																								
V																								
W																								
X																								
Y																								
Z																								

NEWARK TWP

ROCK COUNTY WI

IF AVAILABLE
ROCK COUNTY COORDINATES REFERRED

North _____ Elev. _____

East _____

Hor. Datum _____ Vert. Datum _____

LATITUDE _____ ELLIPS. HT. _____

LONGITUDE _____

GPS (X) _____ TRAVERSE (X) _____

BASED ON THE FOLLOWING CONTROL:

PLACE MONUMENT SYMBOL AT PROPER LOCATION ON ABOVE INDEX

CORNER MONUMENT

WITNESS MONUMENT

(a)

BEARINGS ARE BASED ON:

FIELD BOOK _____ PAGE # _____

SHEET 1 OF 2

SHOW A PLAN VIEW DRAWING DEPICTING THE CORNER MONUMENT AND SURROUNDING PHYSICAL FEATURES, INCLUDING THE EXCAVATION AREA AND DEPTH.

PLANNING & ZONING COMMITTEE ADOPTED THE ABOVE FORM ON 12/2/1982

CORNER CODE E-11

NE526

(B) Describe any record evidence, monument evidence, occupational evidence, testimonial evidence or any other material evidence you considered, and whether the monument was found or placed.

1834 MILLER PG 29 EAST RANDOM BETWEEN SECS 4 & 9

5016 ENTER PRAIRIE

5256.9 INTERSECT SEC LINE 6.6' SOUTH POST

LAND GENTLY ROLLING 2ND RATE TIMBER OAK & HICKORY, OAK & HAZEL UNDERGROWTH. PRAIRIE GRASS 2ND RATE

WEST CORRECTED BETWEEN SEC 4 & 9

*

2628.12 SET 1/4 SEC POST. WHITE OAK 4 IN S82E 9.9'; HICKORY N55W 89.1'

3785.1 HICKORY 12 IN DIA

4872.78 WHITE OAK 15 IN DIAMETER.

*2491.5 BUR OAK 16 IN DIA. (BOTTOM OF PAGE)

1871 COLLINS REMONUMENTATION

PG 184 EAST RANDOM BETWEEN SECS 4 & 9 VARIATION 5-45

2643.96 INTERSECT 1/4 LINE 19.8' NORTH OF CORNER. SET 1/4 STONE BY WITNESS TREE IN PLACE OF OLD STAKE. CORRECTED VARIATION 6-12

CONTINUED EAST VARIATION 5

5293.86 SECTION CORNER OCT 28, 1871

1882 HOLMES VOL 2 PG 348 CALLS FOR MON BUT STATES NOTHING ABOUT IT. 2645.94 TO MON AT NE COR SEC 9, 2644.62 TO CENTER OF SEC 9, & VAR 6-30 5309.7' TO S 1/4 COR SEC 9.

1966 BATTERMAN VOL 4 PG 272 FD 6X6 CUT WHITE L.S. WITH ROUNDED TOP. REF. SAME.

FD PK & THREE REFERENCE PIPES.

C) Was the corner restored through acceptance of (1) an obliterated evidence location, or, (2) a found perpetuated location?

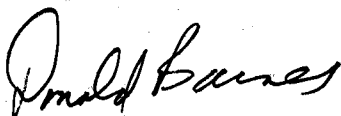
ACCEPTED FOUND PERPETUATED LOCATION.

D) Describe any material discrepancy between the location of the corner as restored or reestablished and the location of that corner as previously restored or reestablished by distance and direction. Show the discrepancy on the plan view drawing under (a), above. Show the distances between the corner as previously restored or reestablished and (1) the corner as restored or reestablished, and (2) to at least 4 of the witness monuments shown on the drawing in (a), above.

(E) Was the corner reestablished through lost corner proportionate methods? If so, show the method, including the directions and distances to other public land survey corners used as evidence or used for proportioning the corner location.

I, Donald Barnes, hereby certify that the corner location as identified by the corner code index was determined by me under my direction and control and that this U.S. Public Land Survey Monument Record is correct and complete to the best of my knowledge and belief.

seal



emboss

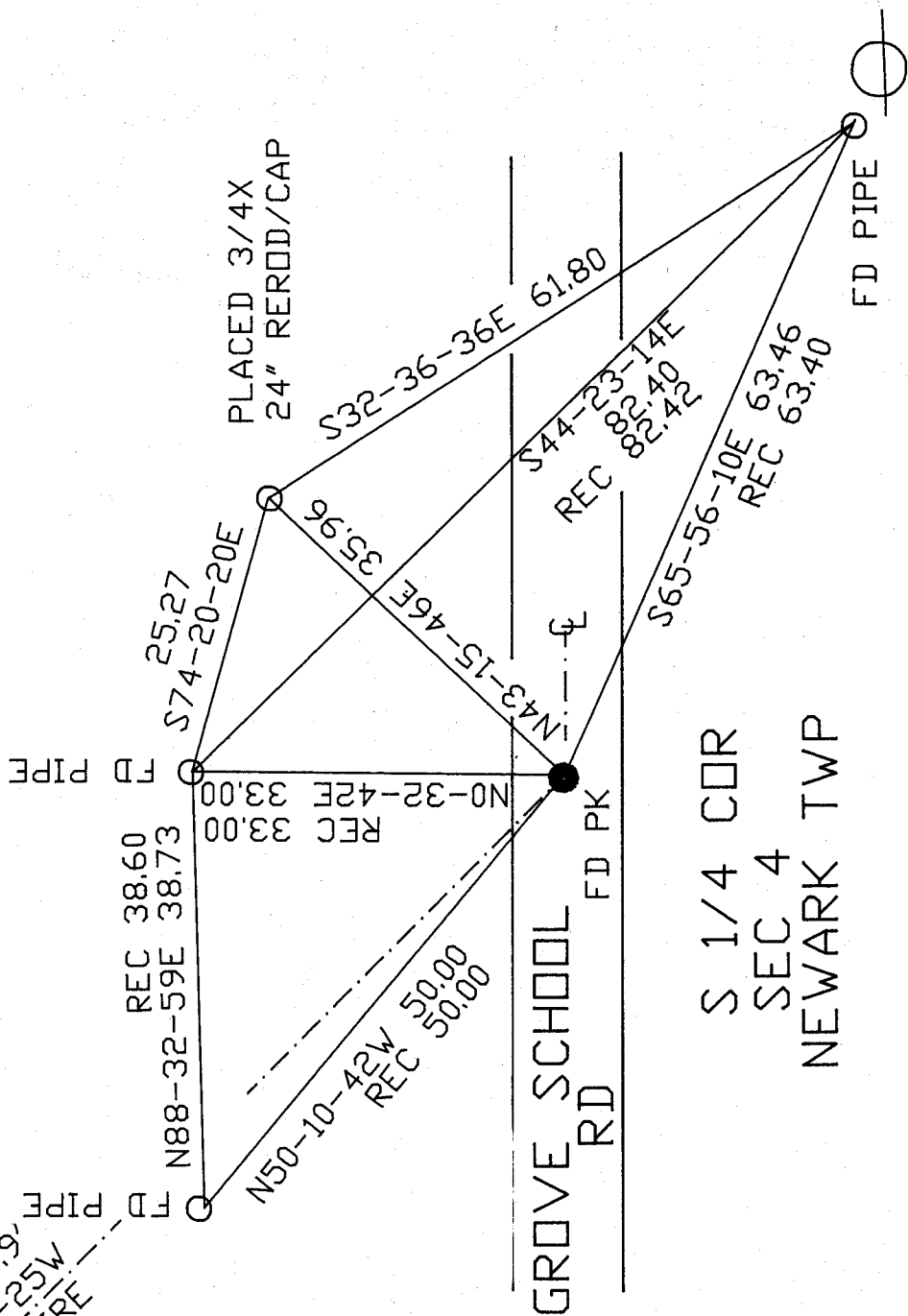
1/21/01

Number of included sheets 1

CORNER CODE E-11

A-E 7.08 REQUIREMENT

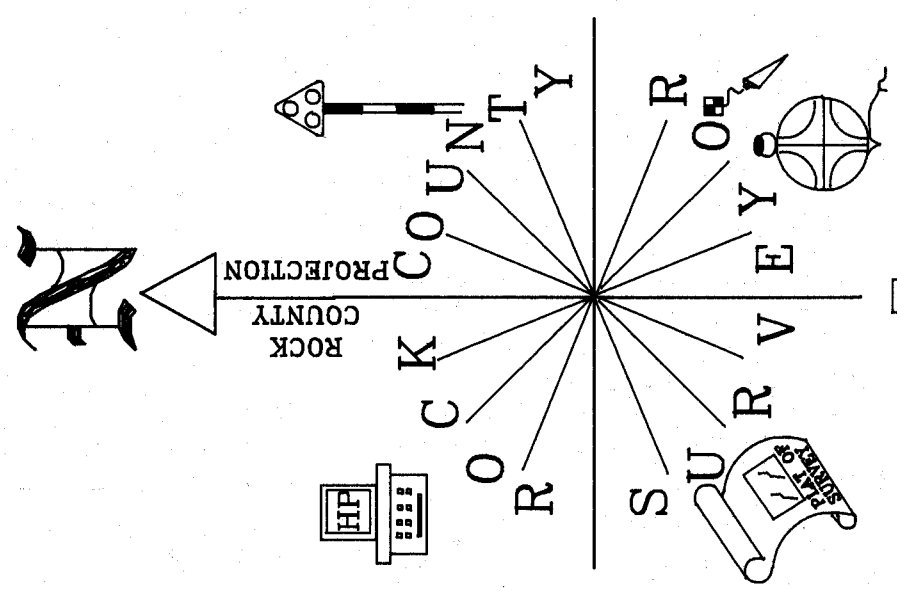
N45-03-25W
 3,618.9'
 SPIRE



EMBOSS SEAL

Donald Haines
 01/21/01

E-11



OBSERVATION SHEET #526
 ● S 1/4 COR SEC 4
 FD PK