

# U.S. PUBLIC LAND SURVEY MONUMENT RECORD

For Public Land Survey Corners in:

WI ADMINISTRATIVE CODE A-E 7.08 REQUIREMENT

T. 1N., R. 11E

### CORNER CODE INDEX

A	2	3	4	5	6	7	8	9	10	11	12	13	14	15	16	17	18	19	20	21	22	23	24	25
B	6																							
C		5																						
D			A																					
E																								
F																								
G	1																							
H		8																						
I			9																					
J																								
K																								
L	18																							
M		11																						
N			16																					
O																								
P																								
Q	19																							
R		20																						
S			21																					
T																								
U	30																							
V		29																						
W			28																					
X																								
Y																								
Z																								

NEWARK TWP  
ROCK COUNTY WI

IF AVAILABLE  
ROCK COUNTY COORDINATES PREFERRED

North \_\_\_\_\_ Elev. \_\_\_\_\_

East \_\_\_\_\_

Hor. Datum \_\_\_\_\_ Vert. Datum \_\_\_\_\_

LATITUDE \_\_\_\_\_ ELLIPS. HT. \_\_\_\_\_

LONGITUDE \_\_\_\_\_

GPS (X) \_\_\_\_\_ TRAVERSE (X) \_\_\_\_\_

BASED ON THE FOLLOWING CONTROL:

PLACE MONUMENT SYMBOL  AT PROPER LOCATION ON ABOVE INDEX

CORNER MONUMENT

WITNESS MONUMENT

(a)

BEARINGS ARE BASED ON:

FIELD BOOK \_\_\_\_\_ PAGE # \_\_\_\_\_

SHEET 1 OF 2

SHOW A PLAN VIEW DRAWING DEPICTING THE CORNER MONUMENT AND SURROUNDING PHYSICAL FEATURES, INCLUDING THE EXCAVATION AREA AND DEPTH.

PLANNING & ZONING COMMITTEE ADOPTED THE ABOVE FORM ON 12/2/1982

CORNER CODE 2-11

NE626

(B) Describe any record evidence, monument evidence, occupational evidence, testimonial evidence or any other material evidence you considered, and whether the monument was found or placed.

- 1832 LYONS PG 2 EAST ALONG THE SOUTH SIDE OF SEC 33. VAR 6-50E  
2640 SET POST FOR 1/4 SECTION CORNER. BLACK OAK 6 N70E 148.5' BUR  
OAK 15 N82W 114.18'  
5280 SET A POST FOR CORNER TO SECTIONS 33 & 34 BUR OAK 12 N14E  
31.02' BUR OAK 15 N34W 87.12'
- 1865 LOCKE VOL 1 PG 227 & #3274 VAR 5-30 2702.04 TO CENTER OF SEC 33, VAR 5-30  
5404.08 TO N 1/4 COR SEC 33 & VAR 5-56 2650.56 TO SE COR SEC 33. FD E. BT &  
STUMP OF W. BT. ERROR IN DISTANCE TO E. B.T.
- 1871 COLLINS REMONUMENTATION NOTES  
PG 174 WEST ON SOUTH LINE OF 33 VARIATION 5-30  
2651.88 INTERSECT 1/4 LINE 5.28' SOUTH OF CORNER SET 1/4 STONE BY  
WITNESS TREE CORRECTED 5-37  
CONTINUED WEST VARIATION 6  
5297.16 INTERSECT SECTION LINE 4.62' SOUTH OF CORNER SET STONE FOR  
CORNER OF 32 & 33 BY STUMPS OF WITNESS TREES CORRECTED  
VARIATION 6-06
- 1987 LEE #12384 FD CUT LIMESTONE, 329.40' SOUTH OF PIN & 1322.39 N89-11-30E OF  
PIN
- 1996 LEUENBERGER #8898 N89-19-40E 2649.86 TO CUT L.S. @ SE COR SEC 33 & NORTH  
2698.70 TO PK @ CENTER OF SEC 33. R/R ON SOUTH LINE OF SE 1/4 OF SEC 33 @  
CENTER OF PVMT IS N89-19-40E 277.93 OF CUT LIMESTONE & 226.65 SOUTH  
EASTERLY OF R/R @ CENTER OF PVMT AND ON N/S CENTER LINE OF SEC 33.

FOUND CUT LIMESTONE. SET CARSONITE POST.

C) Was the corner restored through acceptance of (1) an obliterated evidence location, or, (2) a found perpetuated location?

ACCEPTED FOUND PERPETUATED LOCATION.

D) Describe any material discrepancy between the location of the corner as restored or reestablished and the location of that corner as previously restored or reestablished by distance and direction. Show the discrepancy on the plan view drawing under (a), above. Show the distances between the corner as previously restored or reestablished and (1) the corner as restored or reestablished, and (2) to at least 4 of the witness monuments shown on the drawing in (a), above.

(E) Was the corner reestablished through lost corner proportionate methods? If so, show the method, including the directions and distances to other public land survey corners used as evidence or used for proportioning the corner location.

I, Donald Barnes, hereby certify that the corner location as identified by the corner code index was determined by me under my direction and control and that this U.S. Public Land Survey Monument Record is correct and complete to the best of my knowledge and belief.

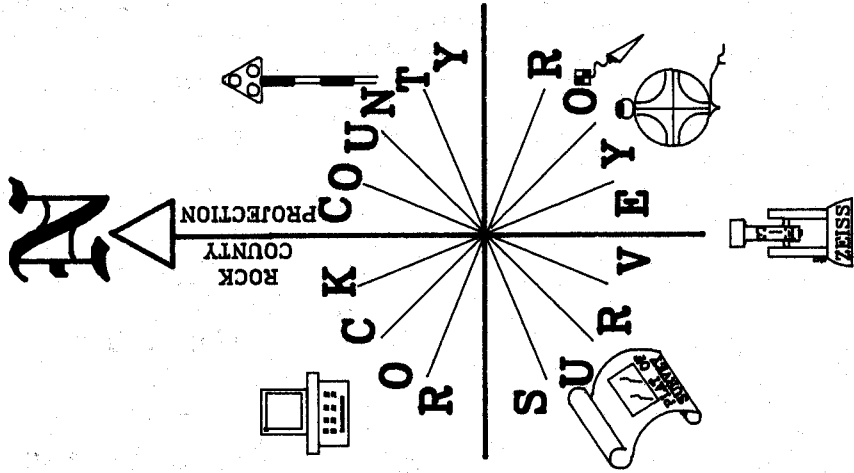
seal

Donald  
Barnes  
6-22-01

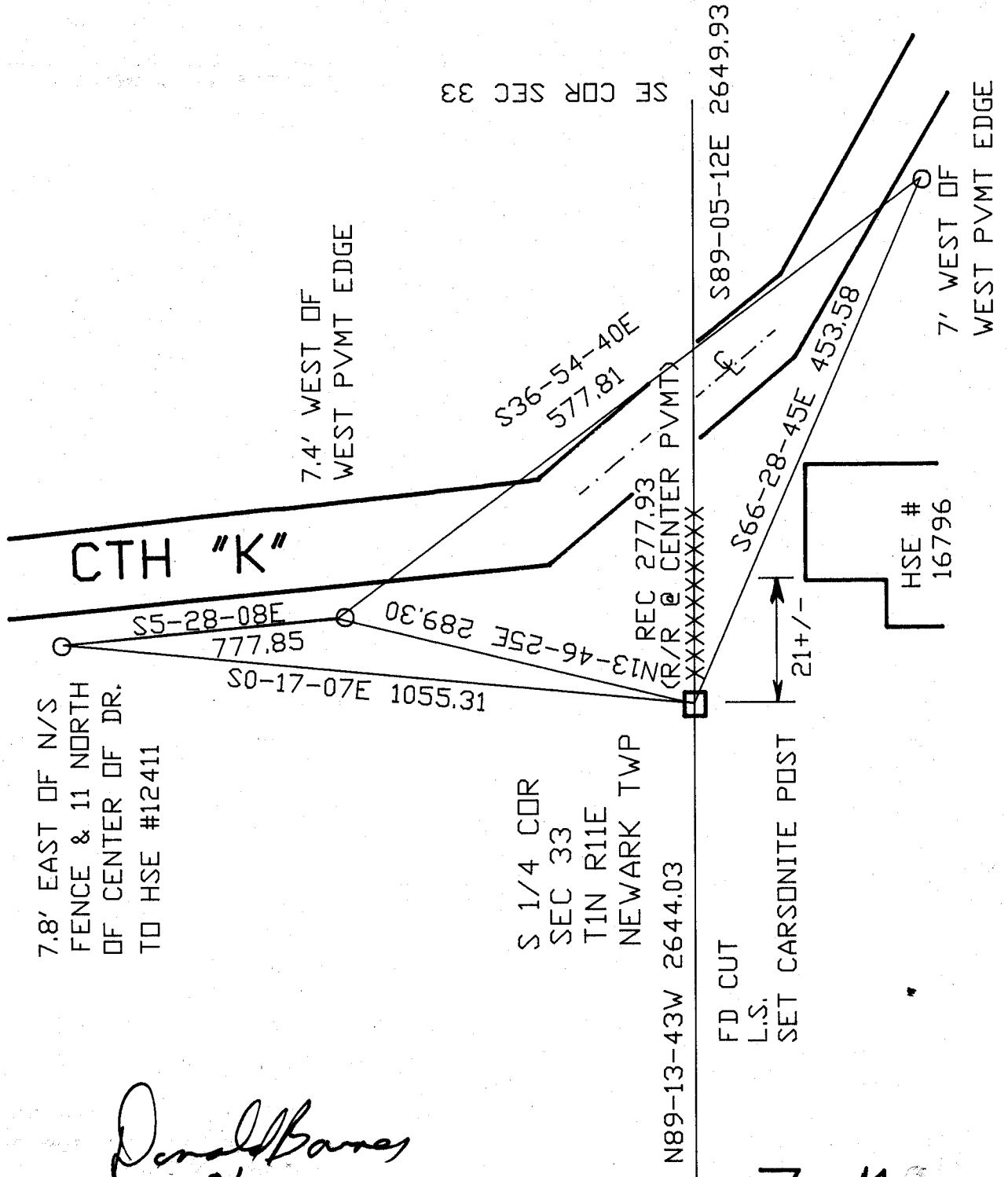
sheet 1 of 2

CORNER CODE **Z-11**

A-E 7.08 REQUIREMENT



O 3/4X24 RERODD/CAP  
 OBSERVATION SHEETS  
 814,815,816 & 626



7.8' EAST OF N/S  
 FENCE & 11 NORTH  
 OF CENTER OF DR.  
 TO HSE #12411

S 1/4 COR  
 SEC 33  
 T1N R11E  
 NEWARK TWP

FD CUT  
 L.S.  
 SET CARSONITE POST

HSE # 16796

*Donald Barnes*  
 6.22-01  
 EMBOSSED SEAL

Z-11

SW COR SEC 33

SE COR SEC 33

N89-13-43W 2644.03