

# U.S. PUBLIC LAND SURVEY MONUMENT RECORD

For Public Land Survey Corners in:

WI ADMINISTRATIVE CODE A-E 7.08 REQUIREMENT

T. 1N., R. 11E 4th P.M.

CORNER CODE INDEX

NEWARK TWP

ROCK COUNTY, WI

IF AVAILABLE

ROCK COUNTY COORDINATES PREFERRED

	1	2	3	4	5	6	7	8	9	10	11	12	13	14	15	16	17	18	19	20	21	22	23	24	25
A																									
B	6																								
C		5																							
D			4																						
E				3																					
F					2																				
G						1																			
H	7																								
I		8																							
J			9																						
K				10																					
L					11																				
M	18																								
N		17																							
O			16																						
P				15																					
Q					14																				
R						13																			
S							12																		
T								11																	
U									10																
V										9															
W											8														
X												7													
Y													6												
Z														5											

North \_\_\_\_\_ Elev. \_\_\_\_\_

East \_\_\_\_\_

Hor. Datum \_\_\_\_\_ Vert. Datum \_\_\_\_\_

LATITUDE \_\_\_\_\_ ELLIPS. HT. \_\_\_\_\_

LONGITUDE \_\_\_\_\_

ELLIPS. DATUM

NAD83(91) \_\_\_\_\_ COUNTY \_\_\_\_\_ LIST \_\_\_\_\_

GPS (X) \_\_\_\_\_ TRAVERSE (X) \_\_\_\_\_

BASED ON THE FOLLOWING CONTROL:

PLACE MONUMENT SYMBOL  AT PROPER LOCATION ON ABOVE INDEX

 CORNER MONUMENT

WITNESS MONUMENT

(a)

BEARINGS ARE BASED ON:

FIELD BOOK \_\_\_\_\_ PAGE # \_\_\_\_\_

SHEET 1 OF 2

SHOW A PLAN VIEW DRAWING DEPICTING THE CORNER MONUMENT AND SURROUNDING PHYSICAL FEATURES, INCLUDING THE EXCAVATION AREA AND DEPTH.

PLANNING & ZONING COMMITTEE ADOPTED THE ABOVE FORM ON 12/2/1982

CORNER CODE X-11

B) Describe any record evidence, monument evidence, occupational evidence, testimonial evidence or any other material evidence you considered, and whether the monument was found or placed.

FOUND TIES.

C) Was the corner restored through acceptance of (1) an obliterated evidence location, or, (2) a found perpetuated location?

DID NOT ACCEPT NOR REJECT  
POSITION

D) Describe any material discrepancy between the location of the Corner as restored or reestablished and the location of that corner as previously restored or reestablished by distance and direction. Show the discrepancy on the plan view drawing under (a), above. Show the distances between the corner as previously restored or reestablished and (1) the corner as restored or reestablished, and (2) to at least 4 of the witness monuments shown on the drawing in (a), above.

E) Was the corner reestablished through lost corner proportionate methods? If so, show the method, including the directions and distances to other public land survey corners used as evidence or used for proportioning the corner location.

I, DONALD BARNES, hereby certify that the corner location as identified by the corner code index was determined by me under by direction and control and that this U.S. Public Land Survey Monument Record is correct and complete to the best of my knowledge and belief.

*Donald Barnes*  
seal 6-27-01  
*Barnes*

emboss/stamped

Number of included sheets 1

A-E 7.08 REQUIREMENT CORNER CODE X-11

10-2-01  
 Donald Barnes  
 EMBOSSED SEAL

FD 1" PIPE HORIZONTAL. DROVE VERTICAL.

9.6 SOUTH NORTH PVMT. EDGE - 8.6' EAST OF N/S CENTER PVMT. =DIST

COMPUTED  
 S59-58-29E 9.85  
 INT. TIE & DIST TO E 1/4 SEC 33

ST. LAWRENCE RD

14.6' SOUTH OF NORTH PVMT EDGE,  
 17.2' EAST OF N/S CENTER PVMT

N1-35-49E 2708.28 (INT.TIE)  
 N1-46-50M 2703.60 (=)  
 1865 LOCKE 2702.04

N 1/4 COR SEC 33

NEWARK TWP  
 TIN R11E

1997 HOULE 2630.77  
 S88-08-12E 2630.77 (INT.TIE)  
 S88-02-08E 2639.46 (=)  
 1865 LOCKE 2638.68

E 1/4 COR SEC 33

W 1/4 COR SEC 33

LOCKE SET STAKE SURROUNDED BY STONES @ CENTER OF SEC 33 @ EQUAL DISTANCE FROM ALL 1/4 CORNERS

FD 1" PIPE IN BASE OF LARGE TREE

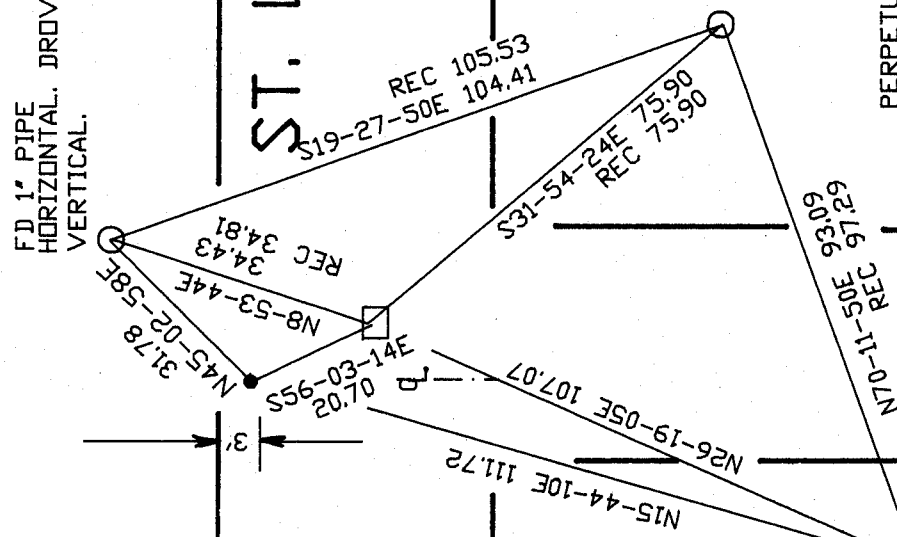
COMPUTED POSITION INT. OF SE TIE & HOULE'S DIST TO E 1/4 COR

PK. CENTER OF PVMT TO THE SOUTH 3.0' SOUTH OF NORTH PVMT EDGE.

PERPETUATING FOUND REFERENCE TIES. NOT ACCEPTING NOR REJECTING CENTER AS RECORDED IN VOL 4 PG 379

S 1/4 COR SEC 33

1865 LOCKE 2702.04  
 S1-24-06W 2703.59 (=)  
 S1-35-07W 2698.89 (INT.TIE)



CTH "K"