

U.S. PUBLIC LAND SURVEY MONUMENT RECORD

For Public Land Survey Corners in:

WI ADMINISTRATIVE CODE A-E 7.08 REQUIREMENT

T. / N., R. / E

CORNER CODE INDEX

	1	2	3	4	5	6	7	8	9	10	11	12	13	14	15	16	17	18	19	20	21	22	23	24	25
A																									
B																									
C	6																								
D																									
E																									
F																									
G	7																								
H																									
I																									
J																									
K	18																								
L																									
M																									
N																									
O																									
P	19																								
Q																									
R																									
S																									
T	30																								
U																									
V																									
W																									
X	31																								
Y																									
Z																									

NEWARK TWP
ROCK COUNTY WI

IF AVAILABLE
ROCK COUNTY COORDINATES PREFERRED

North _____ Elev. _____

East _____

Hor. Datum _____ Vert. Datum _____

LATITUDE _____ ELLIPS. HT. _____

LONGITUDE _____

GPS (X) _____ TRAVERSE (X) _____

BASED ON THE FOLLOWING CONTROL:

PLACE MONUMENT SYMBOL AT PROPER LOCATION ON ABOVE INDEX

CORNER MONUMENT

WITNESS MONUMENT

(a)

BEARINGS ARE BASED ON:

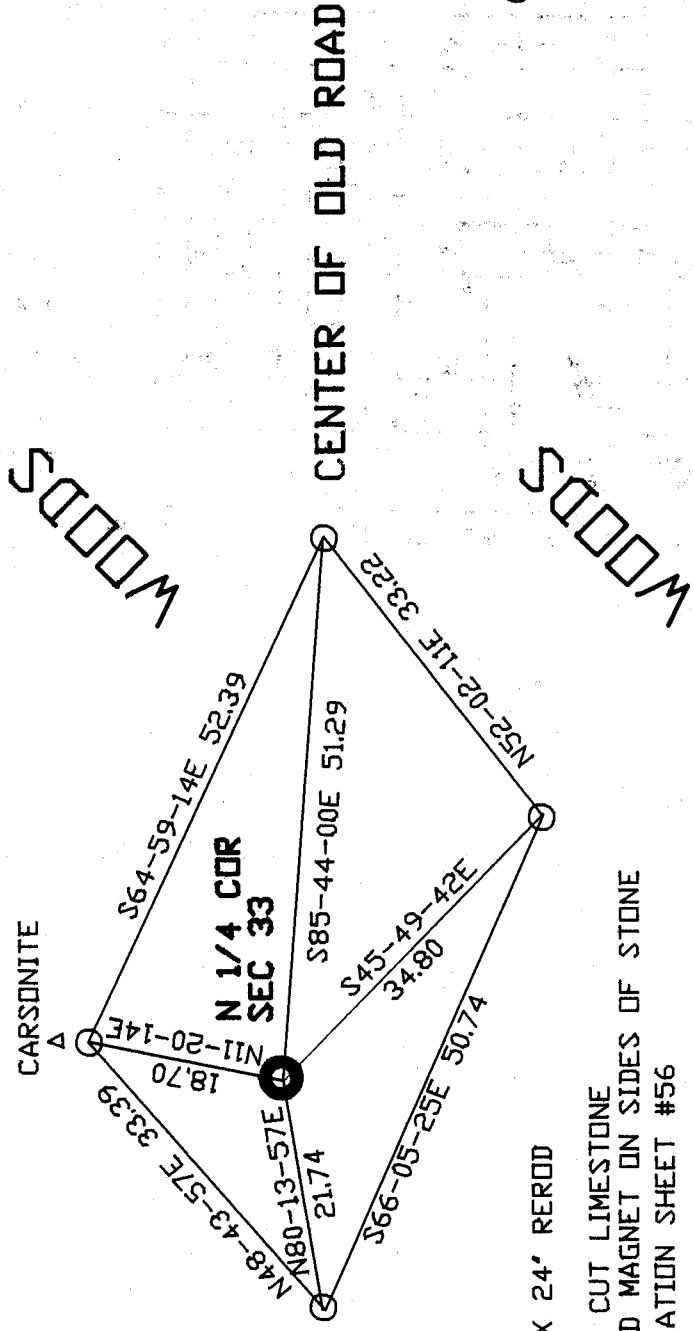
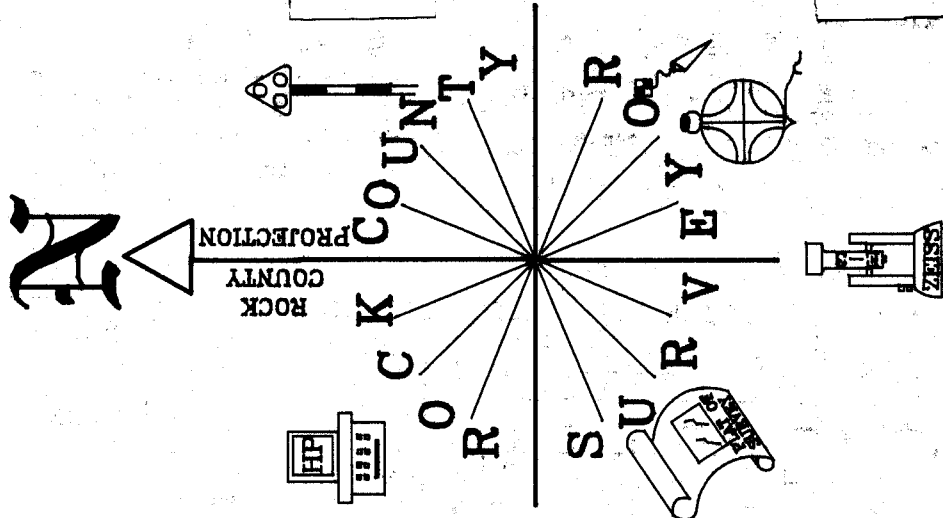
FIELD BOOK _____ PAGE # _____

SHEET _____ OF _____

SHOW A PLAN VIEW DRAWING DEPICTING THE CORNER MONUMENT AND SURROUNDING PHYSICAL FEATURES, INCLUDING THE EXCAVATION AREA AND DEPTH.

PLANNING & ZONING COMMITTEE ADOPTED THE ABOVE FORM ON 12/2/1982

CORNER CODE V-11



200 - 300'

FARM LANE

- 1/2" X 24" REROD
- FOUND CUT LIMESTONE
PLACED MAGNET ON SIDES OF STONE
OBSERVATION SHEET #56

XX

FARM FIELD

XX

ne 606

(B) Describe any record evidence, monument evidence, occupational evidence, testimonial evidence or any other material evidence you considered, and whether the monument was found or placed.

- 1834 MILLER EAST RANDOM BETWEEN SECS 28 & 33
- 3960 ENTER MARSHY GROUND
- 5261.52 INTERSECTED SEC LINE 2.64' NORTH POST.
WEST MARKER BACK
- 2630.76 SET 1/4 SEC POST. BUR OAK 12 N74E 54.12'; BUR OAK 12 S7W
17.16'
- 5261.52 SEC COR
- 1865 LOCKE VOL 1 PG 227 FOUND STUMP OF N. BT & OLD STAKE. SET STAKE 2702.04'
TO CENTER OF SEC 33.
- 1871 COLLIN REMONUMENTATION NOTES. EAST BETWEEN 38 & 33 VARIATION 3-30
- 2647.26' INTERSECT 1/4 LINE 5.28' SOUTH OF CORNER. SET 1/4 STONE
BY STUMP OF WITNESS TREE. CORRECTED VARIATION 3-23
- 5269.44 SECTION CORNER.
- 1965 BATTERMAN VOL 4 PG 233 SHIMEALL FOUND STONE.

C) Was the corner restored through acceptance of (1) an obliterated evidence location, or, (2) a found perpetuated location?

FOUND CUT LIMESTONE WITH TOP 1' BROKE OFF. PLACED MAGNETS ON SIDES OF STONE.

D) Describe any material discrepancy between the location of the corner as restored or reestablished and the location of that corner as previously restored or reestablished by distance and direction. Show the discrepancy on the plan view drawing under (a), above. Show the distances between the corner as previously restored or reestablished and (1) the corner as restored or reestablished, and (2) to at least 4 of the witness monuments shown on the drawing in (a), above.

(E) Was the corner reestablished through lost corner proportionate methods? If so, show the method, including the directions and distances to other public land survey corners used as evidence or used for proportioning the corner location.

I, Donald Barnes, hereby certify that the corner location as identified by the corner code index was determined by me under my direction and control and that this U.S. Public Land Survey Monument Record is correct and complete to the best of my knowledge and belief.

Donald Barnes
March 15, 1999

emboss

Number of included sheets _____

V-11
CORNER CODE