

U.S. PUBLIC LAND SURVEY MONUMENT RECORD

For Public Land Survey Corners in:

WI ADMINISTRATIVE CODE A-E 7.08 REQUIREMENT

T. 2 N., R. 10 E

CORNER CODE INDEX

A	1	2	3	4	5	6	7	8	9	10	11	12	13	14	15	16	17	18	19	20	21	22	23	24	25
B																									
C	6						5				A				3			2						1	
D																									
E																									
F																									
G	7						8				9			10			11							12	
H																									
I																									
J																									
K																									
L	18						17				16			15			14							13	
M																									
N																									
O																									
P	19						20				21			22			23							24	
Q																									
R																									
S																									
T	30						29				28			27			26							25	
U																									
V																									
W																									
X	31						32				33			34			35							36	
Y																									
Z																									

SPRING VALLEY TWP

ROCK COUNTY WI

IF AVAILABLE
ROCK COUNTY COORDINATES PREFERRED

North _____ Elev. _____

East _____

Hor. Datum _____ Vert. Datum _____

LATITUDE _____ ELLIPS. HT. _____

LONGITUDE _____

GPS (X) _____ TRAVERSE (X) _____

BASED ON THE FOLLOWING CONTROL:

PLACE MONUMENT SYMBOL AT PROPER LOCATION ON ABOVE INDEX

CORNER MONUMENT

WITNESS MONUMENT

(a)

BEARINGS ARE BASED ON:

FIELD BOOK _____ PAGE # _____

SHEET 1 OF 3

SHOW A PLAN VIEW DRAWING DEPICTING THE CORNER MONUMENT AND SURROUNDING PHYSICAL FEATURES, INCLUDING THE EXCAVATION AREA AND DEPTH.

PLANNING & ZONING COMMITTEE ADOPTED THE ABOVE FORM ON 12/2/1982

CORNER CODE V25

sp613

(B) Describe any record evidence, monument evidence, occupational evidence, testimonial evidence or any other material evidence you considered, and whether the monument was found or placed.

1834 MILLER

EAST RANDOM BETWEEN SEC 25 - 36

1848' ENTERED MARSH S.W.
2858.46' TRAIL N.W.
3960' ENTER TIMBER
5300.46 INTERSECTED RANGE LINE
WEST CORRECTION BETWEEN SEC 25 & 30
2649.90' SET 1/4 SEC POST IN MARSH BUR OAK 18 S30E 488.4'
5300.46' SEC COR.

1868 LOCKE REMONUMENTATION NOTES OF PLYMOUTH TWP.

WEST BETWEEN SEC 30 & 31 VAR 7-20

2641.98' INTERSECTED 1/4 LINE 3.3' SOUTH OF CORNER. FOUND NORTH BT AND WHERE SOUTH BT WAS DUG OUT AND LARGE LIMESTONE ON COR. IN HIGHWAY AND IN LINE WITH FENCE RUNNING SOUTH. VAR CORRECTED 6-09. SET OFF 6.6' NORTH OF 1/4 COR & CONTINUED WEST WITH VAR 7-08
3158.1 CENTER OF BRIDGE 9.24' WIDE
3532.32' CENTER SLUICE BRIDGE
4422' SET OFF 5.28' NORTH
5311.02' INTERSECTED WEST BOUNDARY 22.77' SOUTH OF CORNER FOUND BTS IN SEC 30 & 31 AND 35 & 36. AND OLD STAKE VAR CORRECTED IS 6-23. BT IN 31 IS S67E; BT IN 25 IS 96.36'; BT IN 36 IS 126.72'

1868 LOCKE REMONUMENTATION NOTES OF PLYMOUTH TWP

NORTH ON WEST LINE SEC 30 VAR 7-36

0' SET OFF 3.63' EAST
1987.26 CENTER OF BRIDGE 6.6' WIDE
2517.24 CENTER OF BRIDGE 5.28'
2617.56 INTERSECTED 1/4 LINE 2.97' EAST OF COR. FOUND LARGE LIMESTONE AND UNDER NEATH AN OLD STAKE. SET IN HIGHWAY IN LINE OF E & W FENCES AND 27.72 EAST OF COR. POS TO WEST FENCE. VAR CORRECTED 7-29

1868 LOCKE REMONUMENTATION NOTES OF PLYMOUTH TWP.

SOUTH ON WEST LINE SEC 31 VAR 7-30

1382.7' SMALL BROOK
1521.3 SMALL BROOK
2631.42 INTERSECTED 1/4 LINE 12.87' EAST OF COR. FOUND BTS COR IN CENTER OF ROAD. 6.6 NORTH OF E & W FENCES VAR CORRECTED 7-13. SET OFF FROM 1/4 COR 6.6 WEST & CONTINUED SOUTH WITH VAR 7-20
4092' SET OFF 9.57' WEST
5267.79 INTERSECTED SOUTH BOUNDARY 3.96' WEST OF COR. FOUND NORTH BT AND WHERE SOUTH BT WAS DUG OUT AND LARGE LIMESTONE ON COR. COR IN CENTER OF HIGHWAYS VAR CORRECTED 7-13.
LOCKE PLACED CUT LIMESTONES.

1912 KERCH VOL 3 PG 72 MON SURROUNDED IT WITH HHS.

1937 SUNNY VOL 3 PG 356 DUG 8 X 12 X 4' DEEP HOLE FOUND NO MONUMENT. DRAWING INDICATES THE HOLE WAS AT THE CENTER OF THE ROAD TO THE EAST.

1962 BATTERMAN JR. VOL 4 PG 116 REFERENCE TO CORNER GIVEN BY C. SHIMEALL. DID NOT STATE MONUMENT FOUND OR PLACED.

FOUND SW, NE, & NW TIES. NW TIE IS A FENCE POST THAT IS LARGE AND LEANING. THE NE PIPE WAS BENT. DUG & FOUND CUT LIMESTONE 1.8' DEEP & 3.2' WEST OF CENTER OF PAVEMENT. PLACED MAGNET ON SE CORNER OF LIMESTONE. MONUMENT IS ON LINE WITH SOUTH PAVEMENT EDGE OF ROAD THAT IS TO THE WEST. THE FOLLOWING DISTANCES AND BEARINGS TO ADJACENT CORNERS ARE BASED ON ASSUMED NORTH:

N89-44-44E 2668.58 (REC 2669.04)	TO N 1/4 COR SEC 31
N1-03-00E 2630.78 (REC 2631.42)	TO E 1/4 COR SEC 36
N89-12-04W 2653.25 (REC-ORIG- 2649.90)	TO N 1/4 COR SEC 36
N1-18-00W 2618.88 (REC 2617.56)	TO E 1/4 COR SEC 25.

Donald Barnes
6/23 96

V25

58-A

C) Was the corner restored through acceptance of (1) an obliterated evidence location, or, (2) a found perpetuated location?
ACCEPTED FOUND LIMESTONE.

D) Describe any material discrepancy between the location of the corner as restored or reestablished and the location of that corner as previously restored or reestablished by distance and direction. Show the discrepancy on the plan view drawing under (a), above. Show the distances between the corner as previously restored or reestablished and (1) the corner as restored or reestablished, and (2) to at least 4 of the witness monuments shown on the drawing in (a), above.

(E) Was the corner reestablished through lost corner proportionate methods? If so, show the method, including the directions and distances to other public land survey corners used as evidence or used for proportioning the corner location.

I, Donald Barnes, hereby certify that the corner location as identified by the corner code index was determined by me under by direction and control and that this U.S. Public Land Survey Monument Record is correct and complete to the best of my knowledge and belief.

seal

Number of included sheets _____

emboss

CORNER CODE

A-E 7.08 REQUIREMENT

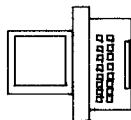
Donald Barnes
6/25/96

1125

Orndorff
4/25/96

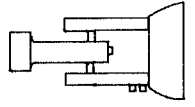
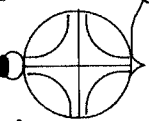


ASSUMED

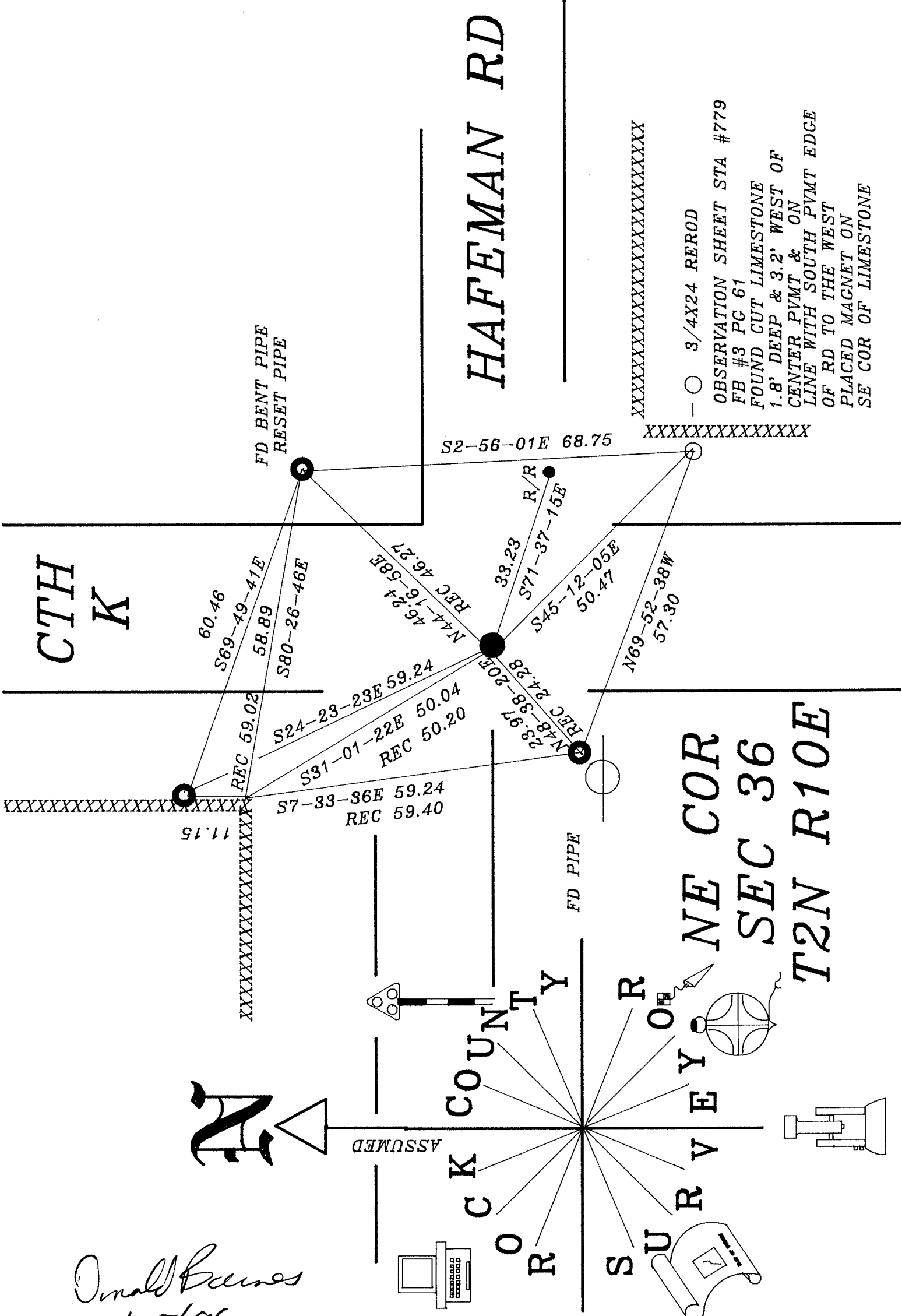


OR
CK
COUNTY

SURVEY
OR



NE COR
SEC 36
T2N R10E



HAFEMAN RD

S2-56-01E 68.75

XXXXXXXXXXXXXXXXXXXXXXXXXXXX

—○ 3/4X24 REROD

OBSERVATION SHEET STA #779
FB #3 PG 61
FOUND CUT LIMESTONE
1.8' DEEP & 3.2' WEST OF
CENTER PVMT & ON
LINE WITH SOUTH PVMT EDGE
OF RD TO THE WEST
PLACED MAGNET ON
SE COR OF LIMESTONE

XXXXXXXXXXXXXXXXXXXX