

U.S. PUBLIC LAND SURVEY MONUMENT RECORD

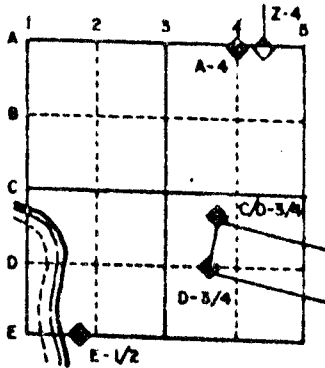
For Public Land Survey Corners in the
T. 4 N., R. 11 E.

CORNER CODE INDEX

	1	2	3	4	5	6	7	8	9	10	11	12	13	14	15	16	17	18	19	20	21	22	23	24	25
A																									
B																									
C	6																								
D		5																							
E			4																						
F				3																					
G					2																				
H																									
I																									
J																									
K																									
L																									
M																									
N																									
O																									
P																									
Q																									
R																									
S																									
T																									
U																									
V																									
W																									
X																									
Y																									
Z																									

PLACE MONUMENT SYMBOL (◆) AT PROPER LOCATION ON ABOVE INDEX

EXAMPLE



PORTER TWP
ROCK COUNTY WI

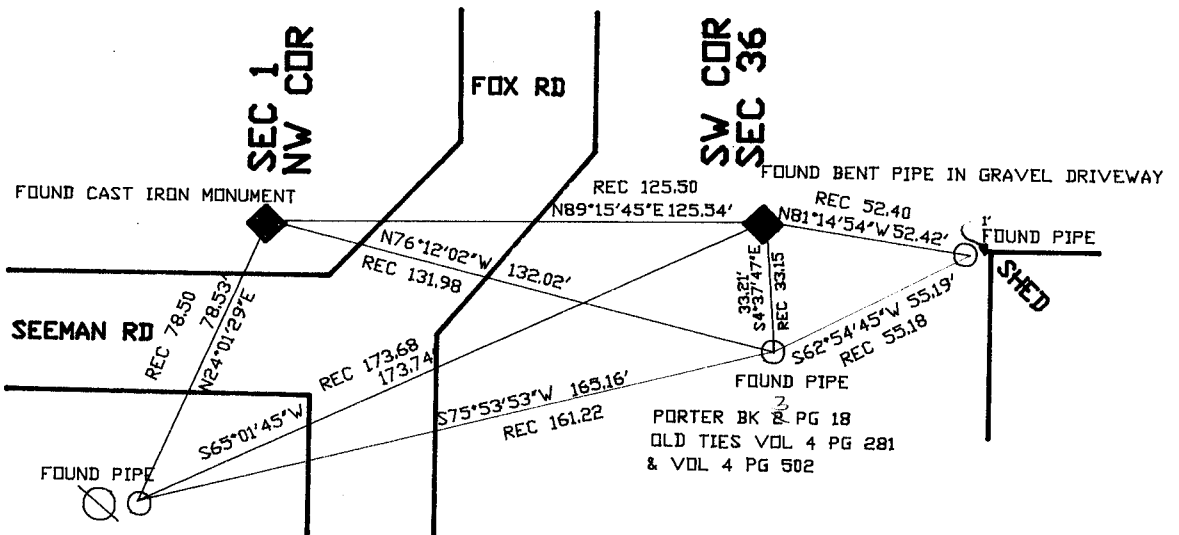
IF AVAILABLE
STATE PLANE COORDINATES

North (Y) _____ Eleve. (Z) _____
 East (X) _____ Zone _____
 Hor. Datum _____ Vert. Datum _____

◆ CORNER MONUMENT

○ WITNESS MONUMENT

BEARINGS ARE BASED ON: TRUE NORTH



SHEET ___ OF ___

CORNER CODE: Z 21

(E) Describe any record evidence, monument evidence, occupational evidence, testimonial evidence or any other material evidence you considered, and whether the monument was found or placed.

1833 ORIGINAL GOVERNMENT SURVEYOR SET POST BUR OAK 16 N55 1/2 E 80.52' AND BUR OAK 12 N78W 8.58'

1833 ORIGINAL GOVERNMENT SURVEYOR SHOWS A JOG OF 125.4' WITH THE CENTER TOWNSHIP CORNER WEST OF THE PORTER TOWNSHIP CORNER.

1861 LOCKE VOL 1 PG 216 FOUND EAST BEARING TREE. SHOWS A JOG OF 131.31.

1883 RUGER VOL 2 PG 411 FOUND HARD HEAD STONE AND STUMP OF NE BEARING TREE.

1966 BATTERMAN JR. VOL 1 PG 281 FOUND LARGE HARD HEAD STONE AS RECORD. PLACED REFERENCE TIES.

1971 LEE VOL 4 PG 302. SET 1" PIPE AND REFERENCED CORNER. SHOWS A JOG OF 125.50 WITH THE PORTER CORNER EAST OF THE CENTER CORNER.

FOUND BENT 1" PIPE. CORNER IS 125.51' EAST OF THE CENTER TOWNSHIP CORNER.

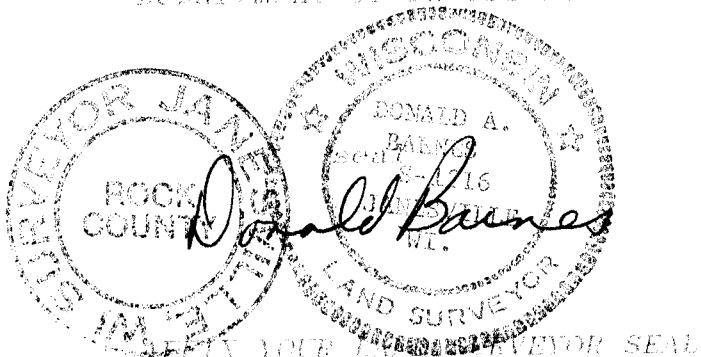
(C) Was the corner restored through acceptance of (1) an obliterated evidence location, or, (2) a found perpetuated location?

ACCEPTED FOUND PERPETUATED LOCATION.

(D) Describe any material discrepancy between the location of the corner as restored or reestablished and the location of that corner as previously restored or reestablished by distance and direction. Show the discrepancy on the plan view drawing under (a), above. Show the distances between the corner as previously restored or reestablished and (1) the corner as restored or reestablished, and (2) to at least 4 of the witness monuments shown on the drawing in (a), above.

(E) Was the corner reestablished through lost corner proportionate methods? If so, show the method, including the directions and distances to other public land survey corners used as evidence or used for proportioning the corner location.

I, Donald Barnes, hereby certify that the corner points as identified by the corner code index were, in a field survey on, September 21, 1989, established, re-established, monumented, re-monumented, recovered or restored as expressed below and in conformance with the regulations and rules as required in the current manual of survey instructions of the United States Department of Interior, Bureau of Land Management.



COUNTY SURVEYOR FILING DATA

Date of computer entry _____

Date microfilmed _____

Number of included sheets _____

CORNER CODE