

Paper weight-110# (minimum)

Black nonfading ink required

U.S. PUBLIC LAND SURVEY MONUMENT RECORD

For Public Land Survey Corners In:

T. 4N. R. 11E. 4th P.M.

WI ADMINISTRATIVE CODE A-E 7.08 REQUIREMENT

REV 10/23/2004

USMONREC.DWG

CORNER CODE INDEX

A	1	2	3	4	5	6	7	8	9	10	11	12	13	14	15	16	17	18	19	20	21	22	23	24	25	A
B																										B
C																										C
D																										D
E																										E
F																										F
G																										G
H																										H
J																										J
K																										K
L																										L
M																										M
N																										N
O																										O
P																										P
Q																										Q
R																										R
S																										S
T																										T
U																										U
V																										V
W																										W
X																										X
Y																										Y
Z																										Z

PORTER TWP

ROCK COUNTY WI

IF AVAILABLE
ROCK COUNTY COORDINATES PREFERRED

North _____ Elev. _____

East _____

Hor. Datum _____ Vert. Datum _____

LATITUDE _____ ELLIPS. HT. _____

LONGITUDE _____

NAD83(91) _____ NETWORK ADJ. YR _____

GPS (X) _____ TRAVERSE (X) _____

BASED ON THE FOLLOWING CONTROL:

PLACE MONUMENT SYMBOL AT PROPER LOCATION ON ABOVE INDEX

CORNER MONUMENT

WITNESS MONUMENT

BEARINGS ARE BASED ON: _____

FIELD BOOK _____ PAGE # _____

SHEET 1 OF 2

SHOW A PLAN VIEW DRAWING DEPICTING THE CORNER MONUMENT AND SURROUNDING PHYSICAL FEATURES, INCLUDING THE EXCAVATION AREA AND DEPTH.

PLANNING & ZONING COMMITTEE ADOPTED THIS FORM ON 12/2/1982

CORNER CODE X-21

P0619

W1/4CORSEC36

(B) Describe any record evidence, monument evidence, occupational evidence, testimonial evidence or any other material evidence you considered, and whether the monument was found or placed.

- 1833 HARRISON (OCT/NOV) T4N R11E 4TH MER. NORTH
BET. 35 & 36 (VAR B-4DE)
1618.98 TO A BURR OAK 18 IN DIAM
2640.0 QUARTER SEC COR. {BURR OAK 18 N74E
23.76'; BURR OAK 18 S86W 10.56'
{BURR OAK 18; BURR OAK 18} MARKED
4154.70 BURR OAK 10 IN DIAM. & ENTER PRAIRIE
4933.50 TRAIL CRS N.E.
5280.0 SET A POST & RAISED A MOUND OF EARTH &
SOD FOR COR TO SECS 25,26,35,36 ON
LEVEL PRAIRIE
LAND 1ST 3/4 OF THE GENTLY ROLLING 2ND
RATE WITH A HANDSOME GROVE OF BURR
OAK TIMBER
- 1847 PORTER TWP RD REC BK 1 PG 1 BEGINNING AT THE 1/4 POST
ON THE SEC LINE BETWEEN SECTIONS 23, & 24 T4N
R11E EAST; THENCE SOUTH ON THE SEC LINE TWO & HALF
MILES TO THE SOUTH WEST COR OF SEC 36 OF TOWN AND
RANGE. THE LENGTH OF SAID ROAD IS 2 1/2 MILES.
COURSES GIVEN ACORDING TO THE TRUE MERIDIAN.
VARIATION OF NEEDLE 7 3/4. WE DO HEREBY CERTIFY THAT
THE ABOVE ROAD WAS LAID AND SURVEYED ACCORDING TO
OUR ORDERS & DIRECTIONS. JUNE 28 1847
- 1972 SCHROEDER CSM VOL 3 PG 11 DOES NOT CALL FOR E 1/4
COR SEC 35 BUT HIS SW LOT COR IS 2368.50 FROM THE NE
COR SEC 35.
- 1989 BARNES FB#3 PG 21 DUG 3' DEEP & FD NOTHING. N10-16-
36W 69.8X FROM TRAV #968

PLACED REFERENCE MONUMENTS. CORNER IS WITHIN OLD PATCH.
FD PK, TRAV #968.

C) Was the corner restored through acceptance of (1) an obliterated evidence location, or, (2) a found perpetuated location?
NO

D) Describe any material discrepancy between the location of the corner as restored or reestablished and the location of that corner as previously restored or reestablished by distance and direction. Show the discrepancy on the plan view drawing under (a), above. Show the distances between the corner as previously restored or reestablished and (1) the corner as restored or reestablished, and (2) to at least 4 of the witness monuments shown on the drawing in (a), above.

(E) Was the corner reestablished through lost corner proportionate methods? If so, show the method, including the directions and distances to other public land survey corners used as evidence or used for proportioning the corner location.
YES. ESTABLISHED MIDWAY & ON LINE BETWEEN THE NW & SW
CORNERS OF SEC 36.

I, Donald Barnes, hereby certify that the corner location as identified by the corner code index was determined by me under my direction and control and that this U.S. Public Land Survey Monument Record is correct and complete to the best of my knowledge and belief.

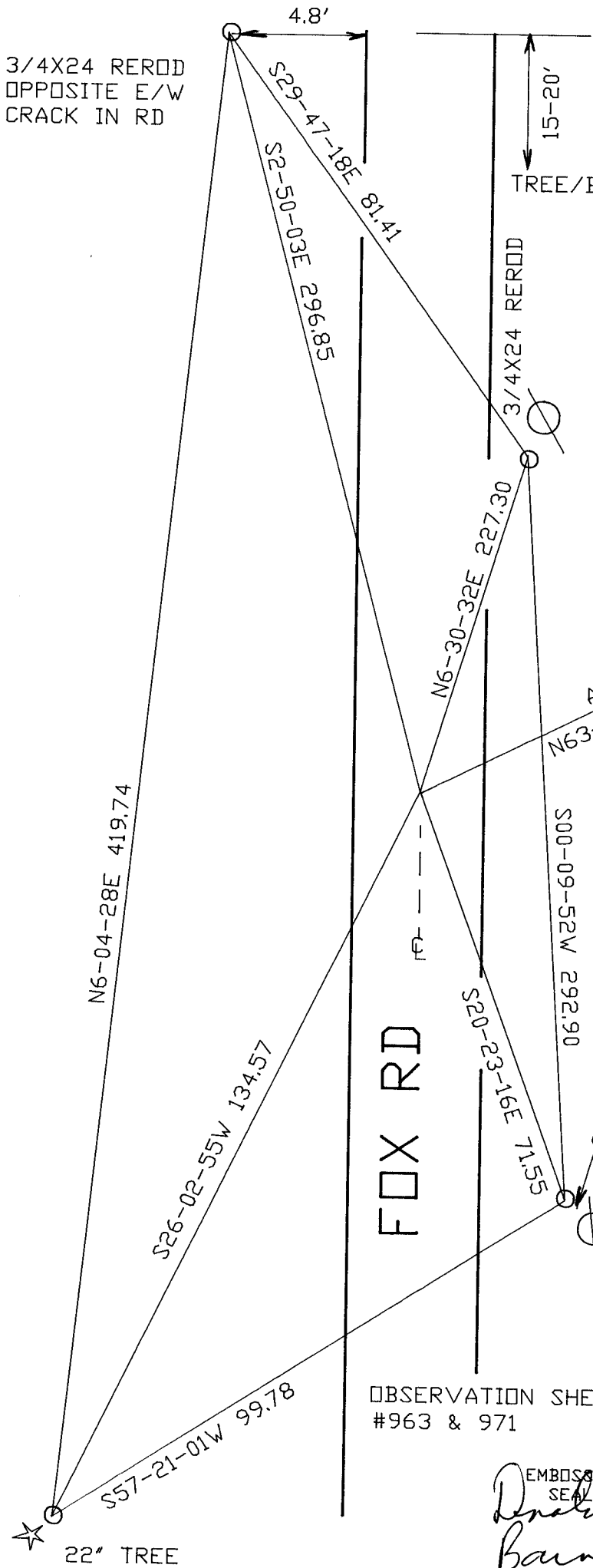
Seal
Donald Barnes
Emboss

SHEET 1 OF 2

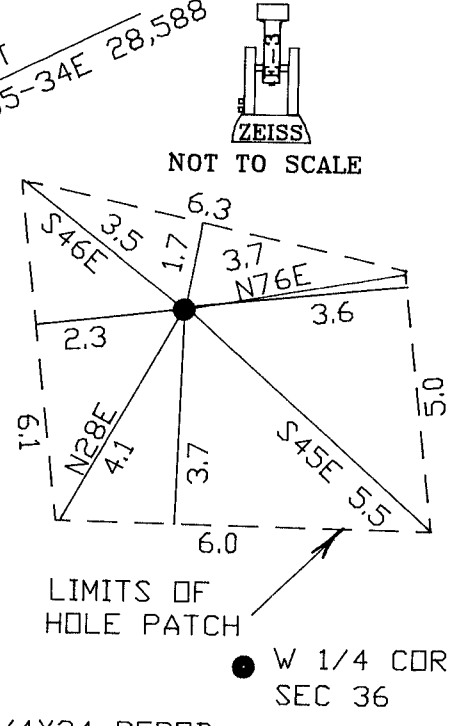
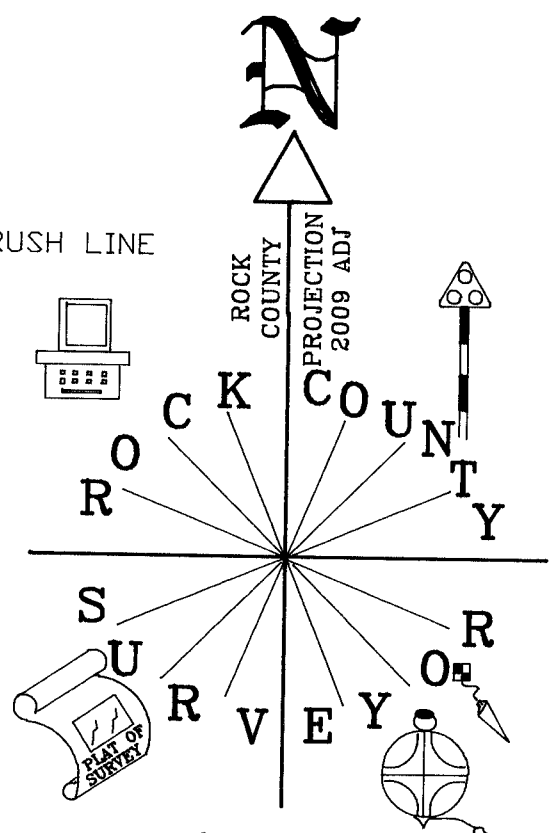
6-09-09

CORNER CODE **X-21**

A.E. 7.08 REQUIREMENT



3/4X24 REROD
OPPOSITE E/W
CRACK IN RD



W 1/4 COR
SEC 36
PORTER TWP
T4N R11E

OBSERVATION SHEETS
#963 & 971

SHEET 2 OF 2

EMBOSSED SEAL
Daniel Barnes
6-09-09

X-21