

U.S. PUBLIC LAND SURVEY MONUMENT RECORD

For Public Land Survey Corners in:
T. 4 N., R. 11 E 4th P.M.

WI ADMINISTRATIVE CODE A-E 7.08 REQUIREMENT

CORNER CODE INDEX

A	1	2	3	4	5	6	7	8	9	10	11	12	13	14	15	16	17	18	19	20	21	22	23	24	25
B																									
C	6					9				A				3						2				A	
D																									
E																									
F																									
G	7					8				9				10						11				12	
H																									
I																									
J																									
K	18					17				16				15						14				13	
L																									
M																									
N																									
O	19					20				21				22						23				24	
P																									
Q																									
R																									
S	30					29				28				27						26	◆			25	
T																									
U																									
V																									
W																									
X																									
Y																									
Z																									

PORTER TWP
ROCK COUNTY, WI

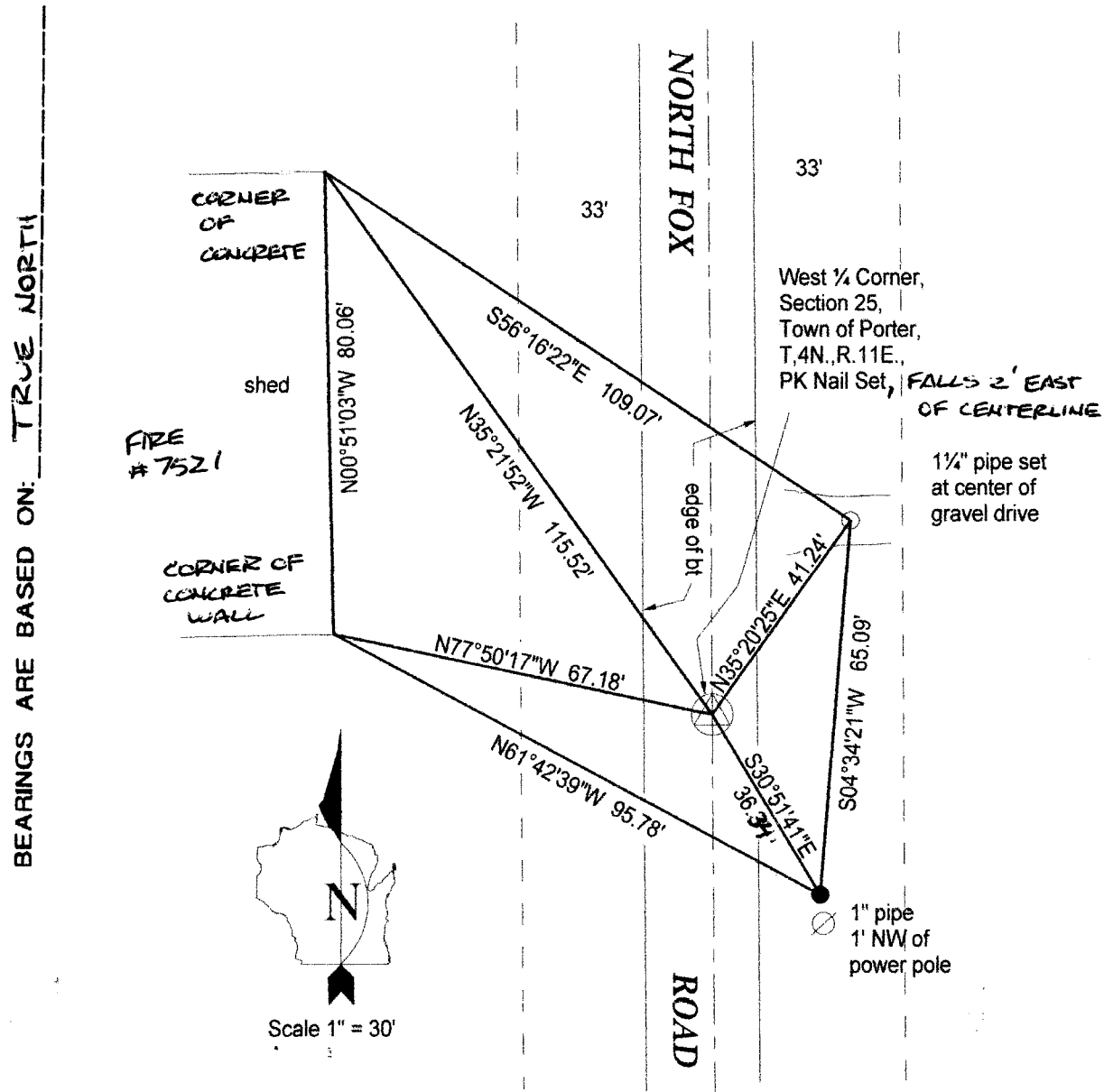
IF AVAILABLE
ROCK COUNTY COORDINATES PREFERRED

North _____ Elev. _____
 East _____
 Hor. Datum _____ Vert. Datum _____
 LATITUDE _____ ELLIPS. HT. _____
 LONGITUDE _____
 ELLIPS. DATUM _____
 NAD83(91) _____ COUNTY _____ LIST _____
 GPS (X) _____ TRAVERSE (X) _____
 BASED ON THE FOLLOWING CONTROL:

PLACE MONUMENT SYMBOL ◆ AT PROPER LOCATION ON ABOVE INDEX

◆ CORNER MONUMENT WITNESS MONUMENT

(a)



FIELD BOOK _____ PAGE # _____ SHEET _____ OF _____

SHOW A PLAN VIEW DRAWING DEPICTING THE CORNER MONUMENT AND SURROUNDING PHYSICAL FEATURES, INCLUDING THE EXCAVATION AREA AND DEPTH.

PLANNING & ZONING COMMITTEE ADOPTED THE ABOVE FORM ON 12/2/1982

CORNER CODE T-21

B) Describe any record evidence, monument evidence, occupational evidence, testimonial evidence or any other material evidence you considered, and whether the monument was found or placed.

NAIL WAS SET ON STRAIGHT LINE BETWEEN NW AND SW CORNERS AS PER 1977 MONUMENT RECORD BY DON BARNES. POSITION MATCHES ORIGINAL TIE TO PIPE FOUND AT SE CORNER OF TIES. NAIL IS ALSO OVER POSITION OF MONUMENT USING LOCATOR, BUT CORNER NOT UNCOVERED AS IT SOUNDS AND APPEARS TO BE AT LEAST ONE FOOT UNDER NEW BITUMINOUS PAVING.

ADDITIONAL TIES WERE SET AS SHOWN.

C) Was the corner restored through acceptance of (1) an obliterated evidence location, or, (2) a found perpetuated location?

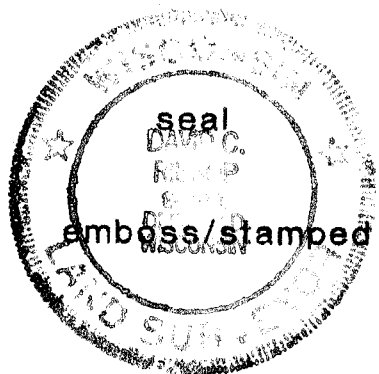
FOUND

D) Describe any material discrepancy between the location of the Corner as restored or reestablished and the location of that corner as previously restored or reestablished by distance and direction. Show the discrepancy on the plan view drawing under (a), above. Show the distances between the corner as previously restored or reestablished and (1) the corner as restored or reestablished, and (2) to at least 4 of the witness monuments shown on the drawing in (a), above.

NONE

E) Was the corner reestablished through lost corner proportionate methods? If so, show the method, including the directions and distances to other public land survey corners used as evidence or used for proportioning the corner location.

I, DAVID C. RIESOP, hereby certify that the corner location as identified by the corner code index was determined by me under by direction and control and that this U.S. Public Land Survey Monument Record is correct and complete to the best of my knowledge and belief.



David C. Riesop
8/30/07

Number of included sheets _____

A-E 7.08 REQUIREMENT CORNER CODE T-21