

Paper weight-110# (minimum)

Black nonfading ink required

U.S. PUBLIC LAND SURVEY MONUMENT RECORD

For Public Land Survey Corners In:

WI ADMINISTRATIVE CODE A-E 7.08 REQUIREMENT

T. 4 N. R. 11 E. 4th P.M.

REV 10/23/2004

USMONREC.DWG

CORNER CODE INDEX

A	1	2	3	4	5	6	7	8	9	10	11	12	13	14	15	16	17	18	19	20	21	22	23	24	25	A	
B		6					5					4				3				2			1			B	
C																											C
D																											D
E																											E
F																											F
G																											G
H																											H
J																											J
K																											K
L																											L
M																											M
N																											N
O																											O
P																											P
Q																											Q
R																											R
S																											S
T																											T
U																											U
V																											V
W																											W
X																											X
Y																											Y
Z																											Z

PORTER TWP

ROCK COUNTY WI

IF AVAILABLE

ROCK COUNTY COORDINATES PREFERRED

North _____ Elev. _____

East _____

Hor. Datum _____ Vert. Datum _____

LATITUDE _____ ELLIPS. HT. _____

LONGITUDE _____

NAD83(91) _____ NETWORK ADJ. YR _____

GPS (X) _____ TRAVERSE (X) _____

BASED ON THE FOLLOWING CONTROL:

1 2 3 4 5 6 7 8 9 10 11 12 13 14 15 16 17 18 19 20 21 22 23 24 25
PLACE MONUMENT SYMBOL **◆** AT PROPER LOCATION ON ABOVE INDEX

CORNER MONUMENT WITNESS MONUMENT

BEARINGS ARE BASED ON: _____

FIELD BOOK _____ PAGE # _____

SHEET 1 OF 3

SHOW A PLAN VIEW DRAWING DEPICTING THE CORNER MONUMENT AND SURROUNDING PHYSICAL FEATURES, INCLUDING THE EXCAVATION AREA AND DEPTH.

PLANNING & ZONING COMMITTEE ADOPTED THIS FORM ON 12/2/1982

CORNER CODE P-21

PO579

E1/4CORSEC23

(B) Describe any record evidence, monument evidence, occupational evidence, testimonial evidence or any other material evidence you considered, and whether the monument was found or placed.

1833 HARRISON (OCT 29TH) T4N R11E 4TH MER. NORTH
BET. 23 & 24

2640.0 QUARTER SEC COR.
SET A POST & RAISED A MOUND OF EARTH & SOD

2838.0 ROAD FROM THE MOUTH OF CATFISH TO DOUGHERTY'S FURNANCE SUGAR CREEK CRS E & W

4543.44 BURR OAK 18 IN DIAM AND LEVEL PRAIRIE

5280.0 SET COR TO SECS 13,14,23, 24 {BURR OAK 18 S25W 31.68' BURR OAK 10 S25E 34.32'; BURR OAK 20 N25W 141.90'; WHITE OAK 15 N69E 69.30' LAND THE 1ST 4,488' IS HANDSOME ROLLING PRAIRIE - SOIL 1ST RATE- REMAINDER ROLLING 2ND RATE WITH BURR & WHITE OAK TIMBER.

1847 PORTER TWP RD REC BK 1 PG 1 BEGINNING AT THE 1/4 POST ON THE SEC LINE BETWEEN SECTIONS 23 & 24 T4N R11E EAST; THENCE SOUTH ON THE SEC LINE TWO & HALF MILES TO THE SOUTH WEST COR OF SEC 36 OF TOWN AND RANGE. THE LENGTH OF SAID ROAD IS 2 1/2 MILES. COURSES GIVEN ACORDING TO THE TRUE MERIDIAN. VARIATION OF NEEDLE 7 -3/4. WE DO HEREBY CERTIFY THAT THE ABOVE ROAD WAS LAID AND SURVEYED ACCORDING TO OUR ORDERS & DIRECTIONS. JUNE 28 1847

1885 RUGER VOL 2 PG 293 FD HARD LIMESTONE 12X9X4 1324.95 TO HH 14XBX6 @ E 1/16TH COR OF NE 1/4 SEC 23, 2649.90 TO NE COR SEC 23, 1356.41 TO LIMESTONE 14XBX3 1/2 @ S 1/16TH COR OF NE 1/4 SEC 23, VAR 6-05 2712.82 TO CENTER SEC 23

1960 ELY #13516 STATES NOTHING ABOUT MON. WEST 1359.2 ALONG E/W 1/4 LINE

1968 BATTERMAN VOL 4 PG 447 STATES NOTHING ABOUT MON. REFERENCED COR. WIDOT DRAWING ADDED.

1970 WIDOT CTH M #13073 SHOWS CORNER BUT DID NOT USE IT OR STATE ANYTHING ABOUT THE MON. SHOWS SAME TIES ON MAP AS IN VOL 4 PG 447.

1976 WIDOT #3624 STATES NOTHING ABOUT MON. PENCELED IN VOL 4 PG 447 REFERENCED COR WITH 3 CONG. MONUMENTS.

1977 BARNES VOL 5 PG 255 CALLS FOR N1-16-15E TO NE COR SEC 23, N89-36-48W 2714.10 TO CEN. SEC 23, N89-36-48W 5433.42 TO W 1/4 SEC 23, S1-06-20W 2646.17 TO SE COR SEC 23

1977 BARNES VOL 6 PG 398 NO-53-15E 2649.82 TO NE COR SEC 23, SO-43-01W 2646.18 TO SE COR SEC 23, WEST 2714.02 TO CENTER OF SEC 23, 5434.37 TO W 1/4 COR SEC 23, ANGLE 90-53-14 @ E 1/4 COR FROM CEN TO NE COR SEC 23, ANGLE 89-16-59 @ E 1/4 COR FROM SE TO CEN OF SEC 23.

FD CI 0.25' DEEP, ON CENTER LINE OF PVMT TO THE SOUTH & 9.0' NORTH OF E/W CENTER LINE OF PVMT. FD WIDOT REFERENCE DISKS IN CONG. I ALSO USED MY 1977 OBSERVATIONS

Donald Barnes
3-23-2009

PO579 E1/4CORSEC23

I DID NOT SEARCH FOR BATTERMAN'S NORTH REFERENCE PIPE NOR THE CONG. CULVERT MARKS.

C) Was the corner restored through acceptance of (1) an obliterated evidence location, or, (2) a found perpetuated location?

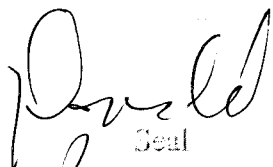
ACCEPTED FD CI. THE CI IS IN HARMONY WITH RUGER'S RECORD DISTANCES.

D) Describe any material discrepancy between the location of the corner as restored or reestablished and the location of that corner as previously restored or reestablished by distance and direction. Show the discrepancy on the plan view drawing under (a), above. Show the distances between the corner as previously restored or reestablished and (1) the corner as restored or reestablished, and (2) to at least 4 of the witness monuments shown on the drawing in (a), above.

NONE

(E) Was the corner reestablished through lost corner proportionate methods? If so, show the method, including the directions and distances to other public land survey corners used as evidence or used for proportioning the corner location.

I, **Donald Barnes**, hereby certify that the corner location as identified by the corner code index was determined by me under my direction and control and that this U.S. Public Land Survey Monument Record is correct and complete to the best of my knowledge and belief.


Seal

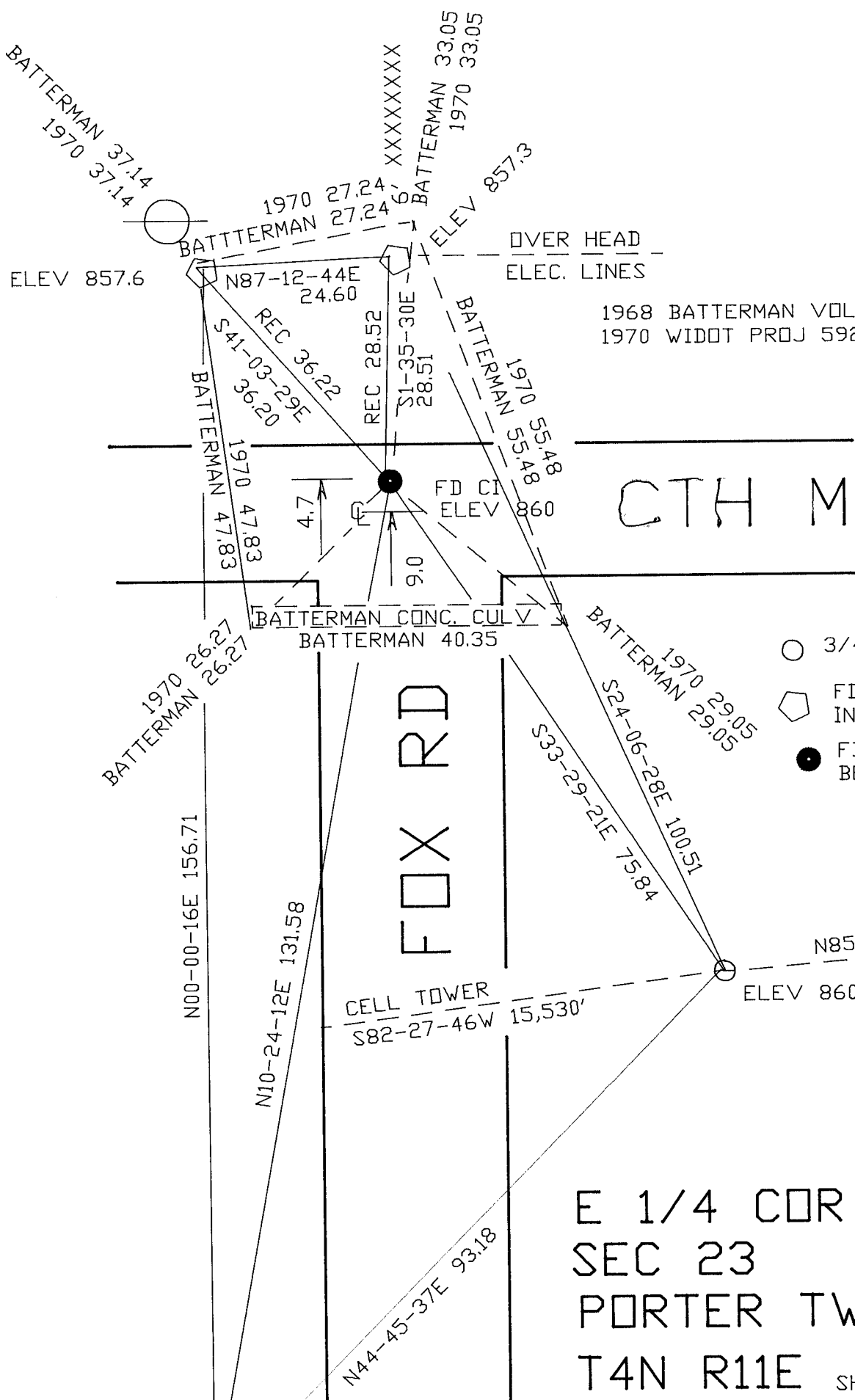

Emboss

3-23-2009

SHEET 2 OF 3

CORNER CODE **P-21**

A.E. 7.08 REQUIREMENT



1968 BATTERMAN VOL 4 PG 447
 1970 WIDOT PROJ 5927-1-00 SHEET

CTH M

- 3/4X24 REROD
- ◊ FD DOT DISK IN CONC.
- FD CI 0.25' BELOW PVMT

E 1/4 COR
 SEC 23
 PORTER TWP
 T4N R11E

SHEET 3 OF 3

ELEV. BASED ON
 USGS @ RD INT. 860
 OBSERVATION SHEET 342

P-21

Donald Barnes
 EMBOSSED SEAL
 3-23/2009

ELEV 861.9

ELEV 857.6