

U.S. PUBLIC LAND SURVEY MONUMENT RECORD

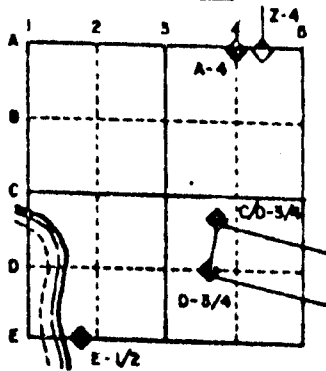
For Public Land Survey Corners in the
T. 4 N., R. 11 E.

CORNER CODE INDEX

	1	2	3	4	5	6	7	8	9	10	11	12	13	14	15	16	17	18	19	20	21	22	23	24	25
A																									
B																									
C	6																								
D		5																							
E			4																						
F				3																					
G					2																				
H	7																								
I		8																							
J			9																						
K				10																					
L					11																				
M						12																			
N	18																								
O		17																							
P			16																						
Q				15																					
R					14																				
S						13																			
T							12																		
U								11																	
V									10																
W										9															
X											8														
Y												7													
Z													6												

PLACE MONUMENT SYMBOL (◆) AT PROPER LOCATION ON ABOVE INDEX

EXAMPLE



PORTER TWP
ROCK COUNTY WI

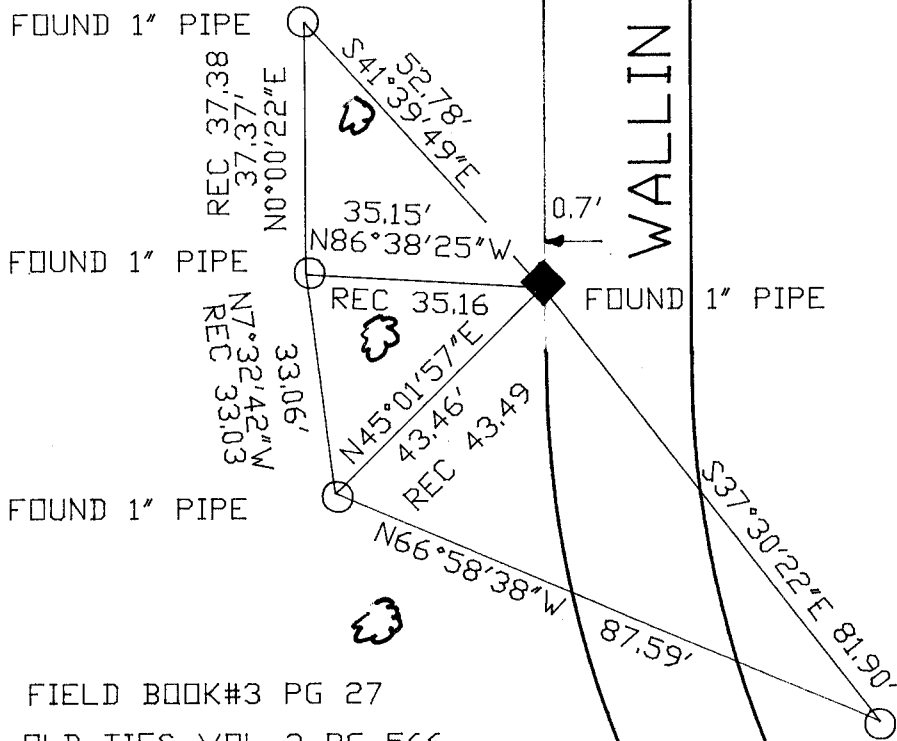
IF AVAILABLE
STATE PLANE COORDINATES

North (Y) _____ Eleve. (Z) _____
East (X) _____ Zone _____
Hor. Datum _____ Vert. Datum _____

◆ CORNER MONUMENT

○ WITNESS MONUMENT

BEARINGS ARE BASED ON: ASSUMED



FIELD BOOK#3 PG 27
OLD TIES VOL 3 PG 566

PLACED 3/4X24 REROD

3 - LARGE MAPLES

MICROFILMED

SHEET ___ OF ___

CORNER CODE: J21

(B) Describe any record evidence, monument evidence, occupational evidence, testimonial evidence or any other material evidence you considered, and whether the monument was found or placed.

1833 HARRISON ORIGINAL SURVEY. PLACED POST & RAISED MOUND FOR CORNER.

1886 RUGER VOL 2 PG 282 FOUND CORNER AS SET BY SELF IN FORMER SURVEY. SHOWS 2722.5 TO SOUTH QUARTER CORNER OF SECTION 11 AND 2753.52 TO EAST 1/4 CORNER OF SECTION 11.

1871 RUGER VOL 2 PG 63 FOUND OLD STAKE AND HARDHEAD STONE ON TOP OF IT DROVE OLD STAKE DOWN AND PUT ON TOP OF IT HARD HEAD STONE 18X11X6. USED CORNER TO ESTABLISH THE S 1/4 CORNER OF SECTION 12.

1958 BATTERMAN JR. VOL 3 PG 566 DUG HOLE S 1/2 FEET DEEP FOUND HH 18X11X6 WITH WOODEN STAKE BENEATH IT, AS DESCRIBED BY RUGER IN VOL 2 PG 63. REFERENCED SAME.

1965 BATTERMAN JR. VOL 4 PG 223 STATES SEE P 566 VOL 3. SHOWS 2647.80 TO S 1/4 CORNER OF SECTION 12. WORK DONE BY SURVEYORS OF W.P. & L CO.

1978 KARNS VOL 5 PG 465. FOUND 1" PIPE SET OVER FOUND STONE ON WEST EDGE OF BLACKTOP. PIPE FOUND FROM 1958 TIE SHEET. SHOWS 2657.26 TO THE W 1/4 CORNER OF SECTION 13.

FOUND 1" PIPE AND REFERENCE PIPES.

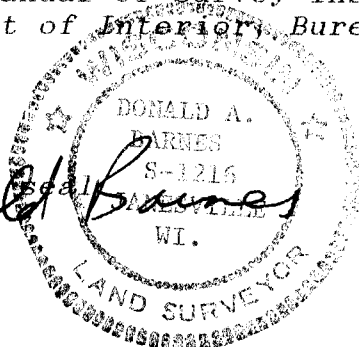
C) Was the corner restored through acceptance of (1) an obliterated evidence location, or, (2) a found perpetuated location?

ACCEPTED FOUND PIPE.

D) Describe any material discrepancy between the location of the corner as restored or reestablished and the location of that corner as previously restored or reestablished by distance and direction. Show the discrepancy on the plan view drawing under (a), above. Show the distances between the corner as previously restored or reestablished and (1) the corner as restored or reestablished, and (2) to at least 4 of the witness monuments shown on the drawing in (a), above.

(E) Was the corner reestablished through lost corner proportionate methods? If so, show the method, including the directions and distances to other public land survey corners used as evidence or used for proportioning the corner location.

I, Donald Barnes, hereby certify that the corner points as identified by the corner code index were, in a field survey on, February 12, 1991, established, re-established, monumented, re-monumented, recovered or restored as expressed below and in conformance with the regulations and rules as required in the current manual of survey instructions of the United States Department of Interior, Bureau of Land Management.



COUNTY SURVEYOR FILING DATA

Date of computer entry _____

Date microfilmed _____

Number of included sheets _____
CORNER CODE

AFFIX YOUR LAND SURVEYOR SEAL