

Paper weight-110# (minimum)

Black nonfading ink required

U.S. PUBLIC LAND SURVEY MONUMENT RECORD

For Public Land Survey Corners In:
T. 4 N. R. 11 E. 4th P.M.
CORNER CODE INDEX

WI ADMINISTRATIVE CODE A-E 7.08 REQUIREMENT
REV 10/23/2004 USMONREC.DWG

PORTER TWP
ROCK COUNTY WI

IF AVAILABLE
ROCK COUNTY COORDINATES PREFERRED

	1	2	3	4	5	6	7	8	9	10	11	12	13	14	15	16	17	18	19	20	21	22	23	24	25		
A																											A
B																											B
C																											C
D																											D
E																											E
F																											F
G																											G
H																											H
J																											J
K																											K
L																											L
M																											M
N																											N
O																											O
P																											P
Q																											Q
R																											R
S																											S
T																											T
U																											U
V																											V
W																											W
X																											X
Y																											Y
Z																											Z

North _____ Elev. _____

East _____

Hor. Datum _____ Vert. Datum _____

LATITUDE _____ ELLIPS. HT. _____

LONGITUDE _____

NAD83(91) _____ NETWORK ADJ. YR _____

GPS (X) _____ TRAVERSE (X) _____

BASED ON THE FOLLOWING CONTROL:

PLACE MONUMENT SYMBOL AT PROPER LOCATION ON ABOVE INDEX

CORNER MONUMENT WITNESS MONUMENT

BEARINGS ARE BASED ON: _____

FIELD BOOK _____ PAGE # _____ SHEET 3 OF 3

SHOW A PLAN VIEW DRAWING DEPICTING THE CORNER MONUMENT AND SURROUNDING PHYSICAL FEATURES, INCLUDING THE EXCAVATION AREA AND DEPTH.

PLANNING & ZONING COMMITTEE ADOPTED THIS FORM ON 12/2/1982

CORNER CODE C-21

PO519

E1/4CORSEC2

(B) Describe any record evidence, monument evidence, occupational evidence, testimonial evidence or any other material evidence you considered, and whether the monument was found or placed.

- 1833 (OCT 30TH) HARRISON T4N R11E 4TH MER. NORTH BETWEEN
1 & 2
1298.88 WHITE OAK 12 IN DIAMETER
2640.0 QUARTER SEC COR. {BURR OAK 10 S9W 9.90';
BURR OAK 12 N49E 29.70' {BURR OAK 10;
BURR OAK 12} MARKED
2772.0 MARSH
4488.0 LEAVE SAME CRS NE
5255.58 INT. N. BDY 32.34' EAST OF POST {WHITE OAK
18 S25E 85.14'; BURR OAK 12 S24W 58.08'
LAND ROLLING 2ND RATE WITH RED, BURR, &
WHITE OAK TIMBER, ?? ??? GRASS & WEEDS
- 1857 PORTER TWP RD REC BK 1 PG 8 BEGINNING AT THE 1/4
POST ON THE SEC LINE BETWEEN SEC 1 & 2 T4N R11;
THENCE SOUTH IN THE SEC LINE BETWEEN SEC 1 & 2 SEC
11 & 12 5280' TO THE 1/4 POST BETWEEN SEC 11 & 12
INTERSECTING THE RD RUNNING EAST & WEST THROUGH
SAID SECTION LINE THE LENGTH OF RD IS ONE MILE. THE
COURSE ACCORDING TO THE TRUE MERIDIAN. VARIATION
OF NEEDLE 8. SURVEY MADE MARCH 14TH 1857. PUBLIC
HIGHWAY 66' WIDE THE LINE SURVEYED BEING THE CENTER
OF THE SAME.
- 1858 PORTER TWP RD REC BK 1 PG 13 BEGINNING AT THE
QUARTER POST ON THE SECTION LINE BETWEEN SEC 1 & 2
T4RANGE 11 EAST, THENCE RUNNING SOUTH ON THE SEC
LINE BETWEEN SECTIONS 1 AND 2, 11 & 12 TO THE
QUARTER POST INTERSECTING THE ROAD RUNNING EAST
AND WEST THROUGH THE MIDDLE OF SECTIONS 11 & 12.
66' WIDE THE LINE SURVEYED TO BE THE CENTER OF
SAID ROAD.
- 1860 PORTER TWP RD REC BK 2 PG 2
- 1874 RUGER VOL 2 PG 128 FD OLD STAKE & HH STONE ON THE
NORTH SIDE OF IT. ALSO FD WHERE STUMPS OF BTS HAD
BEEN DUG UP. DROVE TOMERACK STAKE SURROUNDED IT
WITH 4 HH STONES. 1349.04 VAR 8-02' TO HH 10X8X5 @ N
1/16TH COR OF SW 1/4 OF SEC 1, 2698.08 TO HH 23X9X9
@ CENTER OF SEC 1, & VAR 8-02' 5250.30 TO STAKE @ E
1/4 COR SEC 1, VAR 8-11' 1321.82 TO HH 18X9X7 @ W
1/16TH COR OF SW 1/4 OF SEC 1, & 2643.63 TO HH @ SW
COR OF SEC 1.
- 1977 BARNES VOL 5 PG 276 FD STAKE SURROUNDED BY 4 HH 3'
DEEP. SET ALUM. MON & REFERENCED SAME. SHORT PK
TIES. 10.00 TO SW & SE.
- 1977 COMBS CSM VOL 7 PG 70 STATES NOTHING ABOUT MON.
- 1978 COMBS CSM VOL 8 PG 128 STATES NOTHING ABOUT MON.
- 1989 NORTHROP #12198 ALUM MON IN PLACE. S89-16-34E TO
LS @ E 1/4 COR SEC 1.
- 1989 NORTHROP CSM VOL 13 PG 543 ALUM. MON. S89-16-34E
5255.35 TO L.S. @ E 1/4 COR SEC 1. S00-15-00W 2659.35
FROM E 1/4 COR SEC 1 TO SE COR SEC 1.
- 1999 NORTHROP CSM VOL 22 PG 453 ALUM. N89-16-34E TO RR
@ E 1/4 COR SEC 1; N01-51-37E FROM E 1/4 COR SEC 1 TO
NE COR SEC 1.

FD ALUM 0.3' DEEP, 2' NORTH CEN PVM, & 3.6' WEST OF PVMT. & 3
TIES.

Dodd
Bang
3/14/2009

PO519

E1/4CORSEC2

C) Was the corner restored through acceptance of (1) an obliterated evidence location, or, (2) a found perpetuated location?

ACCEPTED FD ALUM MON., WHICH PERPETUATES RUGERS STAKE

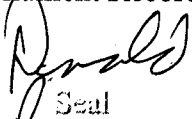

D) Describe any material discrepancy between the location of the corner as restored or reestablished and the location of that corner as previously restored or reestablished by distance and direction. Show the discrepancy on the plan view drawing under (a), above. Show the distances between the corner as previously restored or reestablished and (1) the corner as restored or reestablished, and (2) to at least 4 of the witness monuments shown on the drawing in (a), above.

NONE

(E) Was the corner reestablished through lost corner proportionate methods? If so, show the method, including the directions and distances to other public land survey corners used as evidence or used for proportioning the corner location.

NO

I, **Donald Barnes**, hereby certify that the corner location as identified by the corner code index was determined by me under my direction and control and that this U.S. Public Land Survey Monument Record is correct and complete to the best of my knowledge and belief.

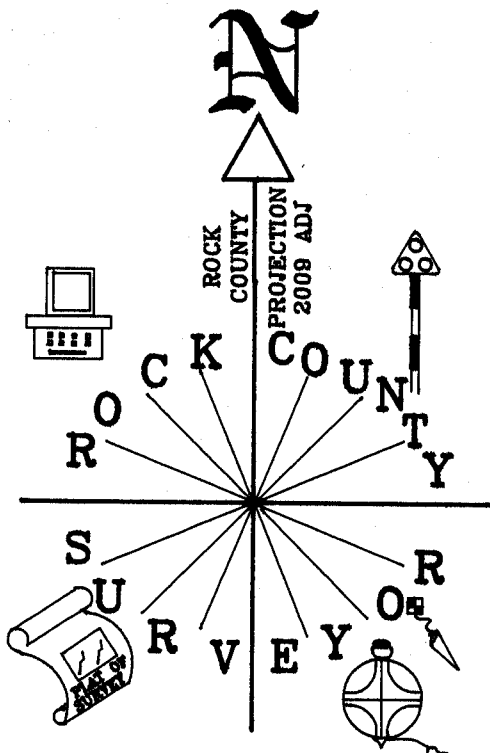

Seal

Emboss

SHEET 2 OF 3

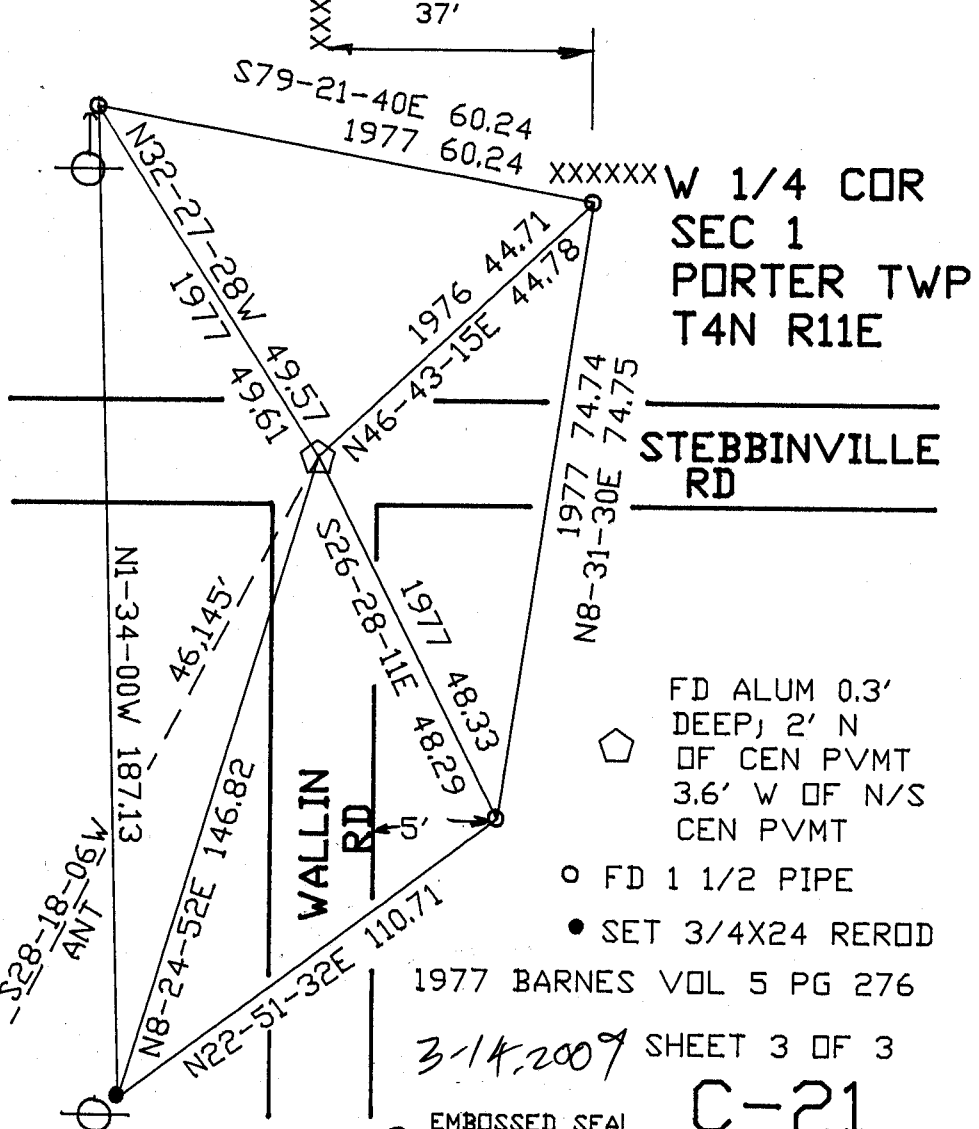
3/14/2009

CORNER CODE **C-21**

A.E. 7.08 REQUIREMENT



NOT TO SCALE



1977 BARNES VOL 5 PG 276

3-14-2009 SHEET 3 OF 3

EMBOSSED SEAL

C-21

Dennis Barnes