

# U.S. PUBLIC LAND SURVEY MONUMENT RECORD

For Public Land Survey Corners in the

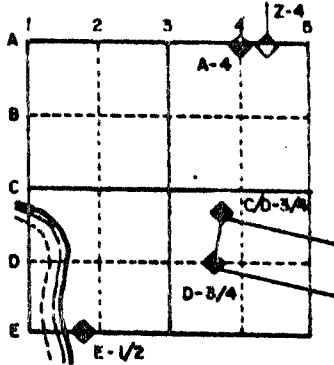
T. 4 N., R. 11 E.

## CORNER CODE INDEX

	1	2	3	4	5	6	7	8	9	10	11	12	13	14	15	16	17	18	19	20	21	22	23	24	25
A																									
B																									
C	6																								
D																									
E																									
F																									
G	7																								
H																									
I																									
J																									
K																									
L	18																								
M																									
N																									
O																									
P	19																								
Q																									
R																									
S																									
T	30																								
U																									
V																									
W																									
X	31																								
Y																									
Z																									

PLACE MONUMENT SYMBOL (◆) AT PROPER LOCATION ON ABOVE INDEX

### EXAMPLE



Porter TWP  
ROCK COUNTY WI

### IF AVAILABLE STATE PLANE COORDINATES

North (Y) \_\_\_\_\_ Eleve. (Z) \_\_\_\_\_  
 East (X) \_\_\_\_\_ Zone \_\_\_\_\_  
 Hor. Datum \_\_\_\_\_ Vert. Datum \_\_\_\_\_

◆ CORNER MONUMENT

○ WITNESS MONUMENT

BEARINGS ARE BASED ON:

See Reverse

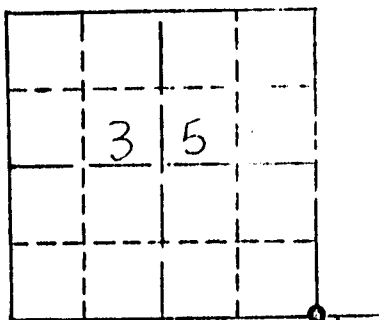
MICROFILMED

SHEET \_\_\_ OF \_\_\_

CORNER CODE: A21

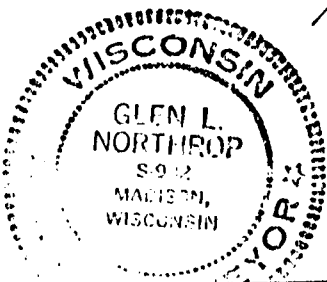
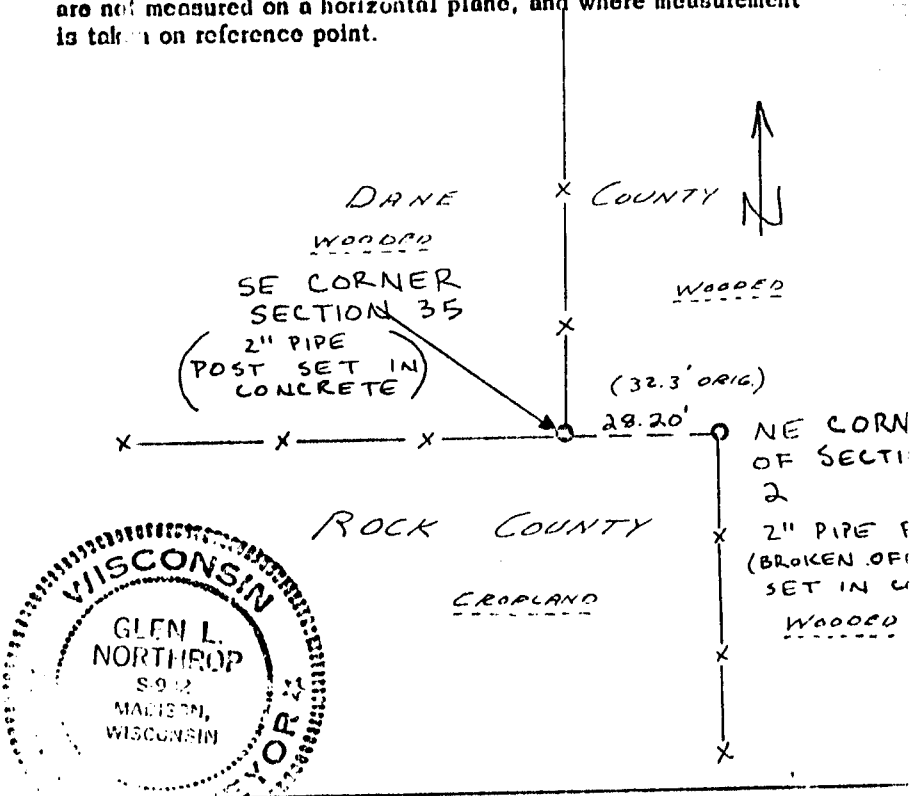
GOVERNMENT CORNER REFERENCE  
Dane County, Wisconsin

Government corner 35 | 36  
Township 5 North  
Range 11 East  
Date of survey 5-5-77  
Fieldbook AB 429-77 FILE NO.  
ABEX SURVEY LTD.  
CAMBRIDGE, WI.



LOCATION SKETCH

This space for drawing of corner showing; type of Monument set, distance and direction of reference monument, a note if distances are not measured on a horizontal plane, and where measurement is taken on reference point.



SURVEYORS AFFIDAVIT (Surveyor must certify the method by which the above described corner STATE OF WISCONSIN } ss has been located or relocated.)  
COUNTY OF DANE

I heroby certify that I accepted the 2" pipe post found at the above described corner after measurement from the SE corner of Sec. 36 was found to agree closely with an 1877 resurvey by Edward Ruger, recorded in Vol. 2, P. 86 of the Rock County Original County Surveyors Records. Dist. measured 80.763 chains compared to Ruger's 80.69 chains.

Glen L. Northrop  
Registered Land Surveyor - Number S 982

REC. 1-21-11  
CORNER NUMBER 21  
DUNKIRK

A 21

A-21