

# U.S. PUBLIC LAND SURVEY MONUMENT RECORD

For Public Land Survey Corners in:

WI ADMINISTRATIVE CODE A-E 7.08 REQUIREMENT

T. 2 N., R. 10 E

### CORNER CODE INDEX

A	1	2	3	4	5	6	7	8	9	10	11	12	13	14	15	16	17	18	19	20	21	22	23	24	25
B																									
C	6																								
D																									
E																									
F																									
G	1																								
H																									
J																									
K	18																								
L																									
M																									
N																									
O																									
P	19																								
Q																									
R																									
S																									
T	30																								
U																									
V																									
W																									
X	31																								
Y																									
Z																									

SPRING VALLEY TWP  
ROCK COUNTY WI

IF AVAILABLE  
ROCK COUNTY COORDINATES PREFERRED

North \_\_\_\_\_ Elev. \_\_\_\_\_

East \_\_\_\_\_

Hor. Datum \_\_\_\_\_ Vert. Datum \_\_\_\_\_

LATITUDE \_\_\_\_\_ ELLIPS. HT. \_\_\_\_\_

LONGITUDE \_\_\_\_\_

GPS (X) \_\_\_\_\_ TRAVERSE (X) \_\_\_\_\_

BASED ON THE FOLLOWING CONTROL:  
\_\_\_\_\_

PLACE MONUMENT SYMBOL  AT PROPER LOCATION ON ABOVE INDEX

CORNER MONUMENT

WITNESS MONUMENT

(a)

BEARINGS ARE BASED ON:

FIELD BOOK \_\_\_\_\_ PAGE # \_\_\_\_\_

SHEET 1 OF 2

SHOW A PLAN VIEW DRAWING DEPICTING THE CORNER MONUMENT AND SURROUNDING PHYSICAL FEATURES, INCLUDING THE EXCAVATION AREA AND DEPTH.

PLANNING & ZONING COMMITTEE ADOPTED THE ABOVE FORM ON 12/2/1982

CORNER CODE 223

SP632

(B) Describe any record evidence, monument evidence, occupational evidence, testimonial evidence or any other material evidence you considered, and whether the monument was found or placed.

1833 MULLETT ORIG SURVEYOR VAR 7-00

WEST ON SOUTH SIDE SECTION 36

2640 SET QUARTER SECTION POST

BUR OAK 12 N29W 49.5'

BUR OAK 12 N23E 49.5'

5280 SET POST CORNER SECTIONS 35 & 36

BUR OAK 16 N76 1/2W 229.02'

BUR OAK 14 N44 1/2E 145.2'

VAR BY OBSERVATION 7-40E

1957 BATTERMAN VOL 3 PG 523 SHOWS A JOG OF 23.10 WITH THE S 1/4 COR SEC 36 TO THE EAST. ESTABLISHED TIE FOR N 1/4 COR SEC 1 BUT DID NOT ESTABLISH THE S 1/4 COR SEC 36.

1957 BATTERMAN 2663.18 FROM NW TO N 1/4 COR SEC 1 @ 2663.18 FROM N 1/4 COR TO NE COR SEC 1.

1993 BARNES A-23 DID NOT FIND OLD PATCH NOR REFERENCE PIPES FOR N 1/4 COR SEC 1 AVON TWP. FD NAIL IN UTILITY POLE. PLACED REFERENCE MONUMENTS.

FOUND BATTERMAN'S SE AND SW 1 1/2" REFERENCE PIPES. 3/4 OF THE SE PIPE WAS LAYING ON TOP OF THE GROUND. ESTABLISHED THE N 1/4 COR OF SEC 1 BY INTERSECTING THE SW REFERENCE PIPE AND THE NAIL IN THE UTILITY POLE. THIS IS IN HARMONY WITH THE RECORD DISTANCES. ESTABLISHED THE S 1/4 CORNER OF SEC 36 ON LINE WITH THE N 1/4 COR SEC 1 AND THE SE CORNER OF SEC 36 AT PROPORTIONATE DISTANCE WITH THE ORIGINAL GOVERNMENT NOTES. CORNER IS IN CENTER OF PAVEMENT.

C) Was the corner restored through acceptance of (1) an obliterated evidence location, or, (2) a found perpetuated location?

D) Describe any material discrepancy between the location of the corner as restored or reestablished and the location of that corner as previously restored or reestablished by distance and direction. Show the discrepancy on the plan view drawing under (a), above. Show the distances between the corner as previously restored or reestablished and (1) the corner as restored or reestablished, and (2) to at least 4 of the witness monuments shown on the drawing in (a), above.

(E) Was the corner reestablished through lost corner proportionate methods? If so, show the method, including the directions and distances to other public land survey corners used as evidence or used for proportioning the corner location.  
YES

I, Donald Barnes, hereby certify that the corner location as identified by the corner code index was determined by me under by direction and control and that this U.S. Public Land Survey Monument Record is correct and complete to the best of my knowledge and belief.

seal  
*Donald Barnes*  
SEP 9, 1996  
emboss

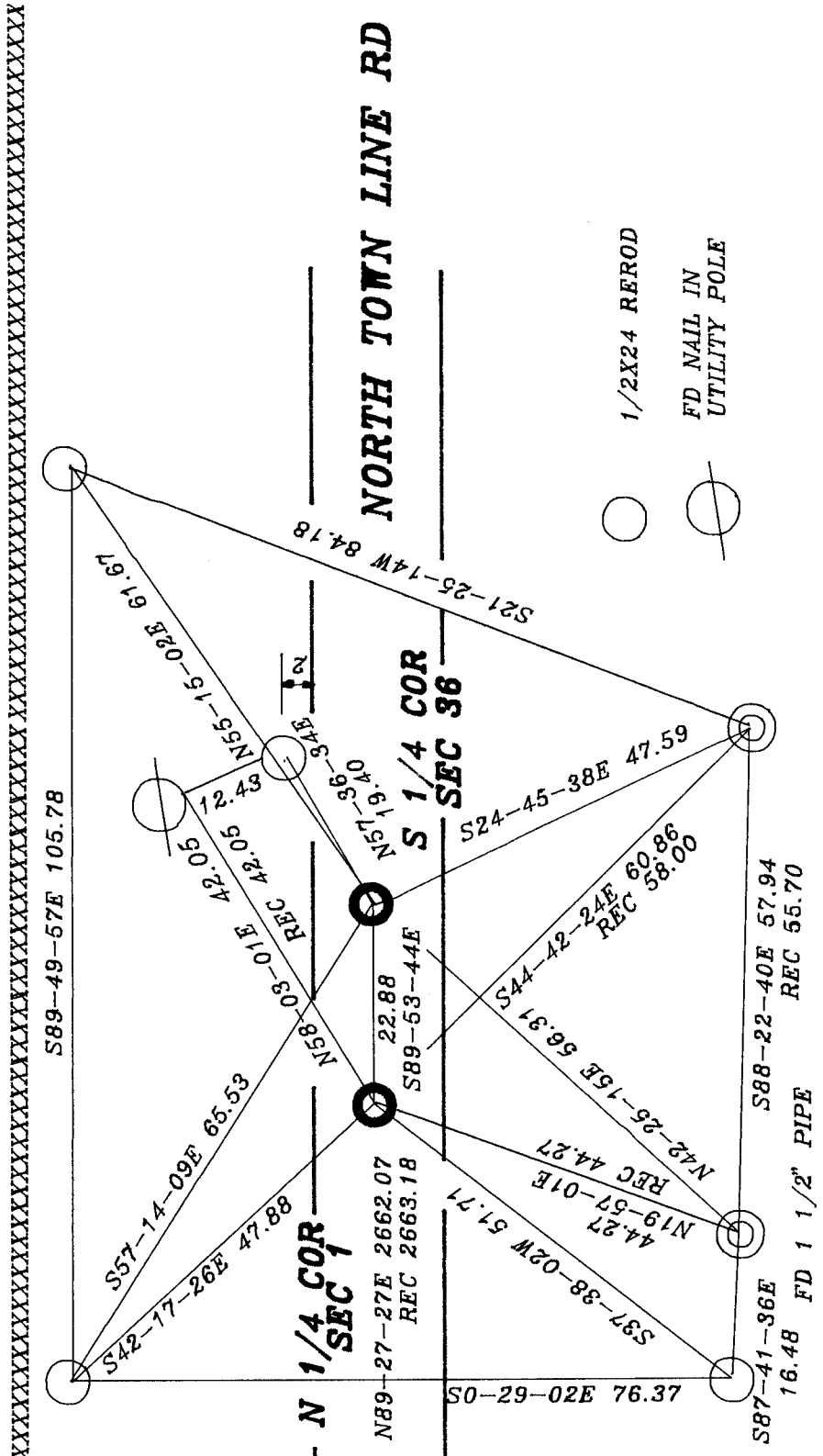
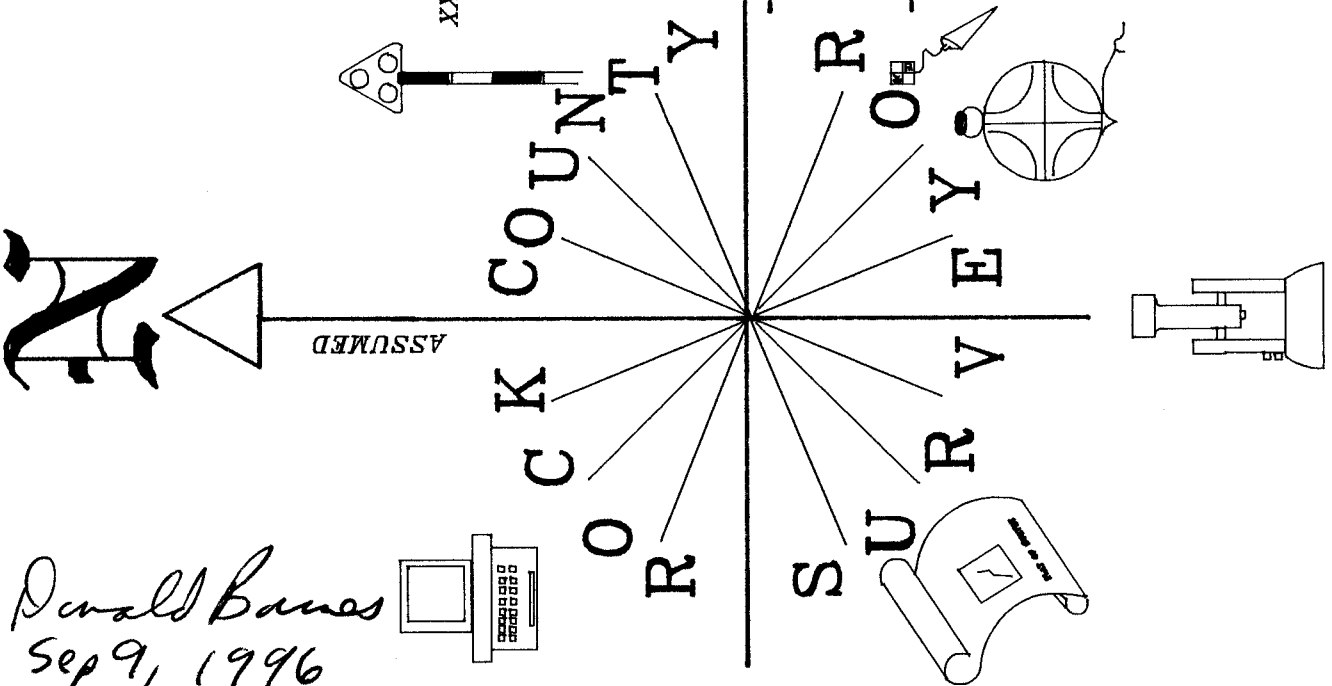
Number of included sheets \_\_\_\_\_

CORNER CODE

A-E 7.08 REQUIREMENT

223

Donald Barnes  
Sep 9, 1996



FD 1 1/2" PIPE LAYING 3/4  
 OF ITS' LENGTH ON TOP OF  
 GROUND. REPLACED WITH 3/4  
 X 24 REROD