

U.S. PUBLIC LAND SURVEY MONUMENT RECORD

For Public Land Survey Corners in:

WI ADMINISTRATIVE CODE A-E 7.08 REQUIREMENT

T. 2N., R. 10E

CORNER CODE INDEX

A	1	2	3	4	5	6	7	8	9	10	11	12	13	14	15	16	17	18	19	20	21	22	23	24	25
B																									
C	6						5				A			3				2						1	
D																									
E																									
F																									
G	7						8			9			10				11							12	
H																									
I																									
J																									
K																									
L	18						17			16			15			14								13	
M																									
N																									
O																									
P	19						20			21			22			23								24	
Q																									
R																									
S																									
T	30						29			28			27			26								25	
U																									
V																									
W																									
X	31						32			33			34			35								36	
Y																									
Z																									

SPRING VALLEY TWP

ROCK COUNTY WI

IF AVAILABLE
ROCK COUNTY COORDINATES PREFERRED

North _____ Elev. _____

East _____

Hor. Datum _____ Vert. Datum _____

LATITUDE _____ ELLIPS. HT. _____

LONGITUDE _____

GPS (X) _____ TRAVERSE (X) _____

BASED ON THE FOLLOWING CONTROL:

PLACE MONUMENT SYMBOL AT PROPER LOCATION ON ABOVE INDEX

CORNER MONUMENT

WITNESS MONUMENT

(a)

BEARINGS ARE BASED ON:

FIELD BOOK _____ PAGE # _____

SHEET 1 OF 2

SHOW A PLAN VIEW DRAWING DEPICTING THE CORNER MONUMENT AND SURROUNDING PHYSICAL FEATURES, INCLUDING THE EXCAVATION AREA AND DEPTH.

PLANNING & ZONING COMMITTEE ADOPTED THE ABOVE FORM ON 12/2/1982

CORNER CODE V 23

sp612

(B) Describe any record evidence, monument evidence, occupational evidence, testimonial evidence or any other material evidence you considered, and whether the monument was found or placed.

1834 MILLER

EAST RANDOM BETWEEN SEC 25 - 36

1848' ENTERED MARSH S.W.

2858.46' TRAIL N.W.

3960' ENTER TIMBER

5300.46 INTERSECTED RANGE LINE

WEST CORRECTION BETWEEN SEC 25 & 30

2649.90' SET 1/4 SEC POST IN MARSH BUR OAK 18 S30E 488.4'

5300.46' SEC COR.

1854 Mc VEAN VOL 1 PG 21 2640 TO NW COR SEC 36, 2620.2' TO CENTER OF SEC 25.

DUG LARGE HOLE & FOUND 4.5' DEEP WOOD POST 5" DIA X 18" LONG.

C) Was the corner restored through acceptance of (1) an obliterated evidence location, or, (2) a found perpetuated location?

ACCEPTED WOOD POST.

D) Describe any material discrepancy between the location of the corner as restored or reestablished and the location of that corner as previously restored or reestablished by distance and direction. Show the discrepancy on the plan view drawing under (a), above. Show the distances between the corner as previously restored or reestablished and (1) the corner as restored or reestablished, and (2) to at least 4 of the witness monuments shown on the drawing in (a), above.

(E) Was the corner reestablished through lost corner proportionate methods? If so, show the method, including the directions and distances to other public land survey corners used as evidence or used for proportioning the corner location.

I, Donald Barnes, hereby certify that the corner location as identified by the corner code index was determined by me under by direction and control and that this U.S. Public Land Survey Monument Record is correct and complete to the best of my knowledge and belief.

seal

Donald Barnes

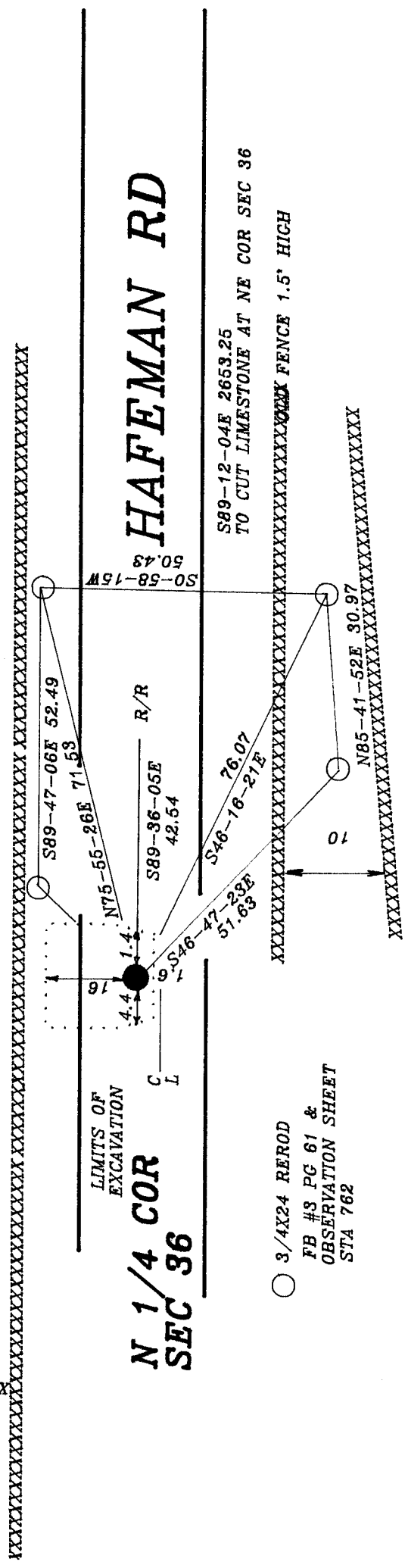
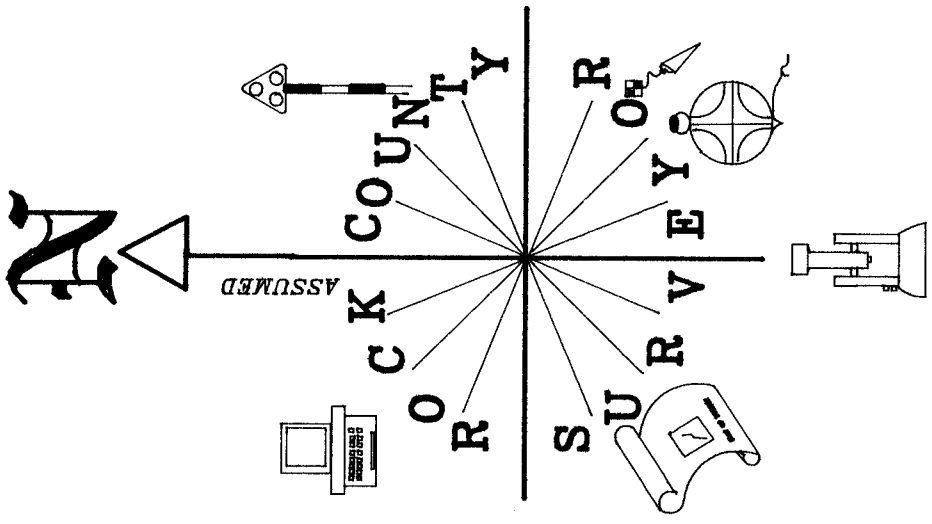
Number of included sheets 1

emboss

CORNER CODE

A-E 7.08 REQUIREMENT

V 23



Donald Barnes
June 25, 1996

○ 3/4X24 REEROD
FB #S PG 61 &
OBSERVATION SHEET
STA 762