

U.S. PUBLIC LAND SURVEY MONUMENT RECORD

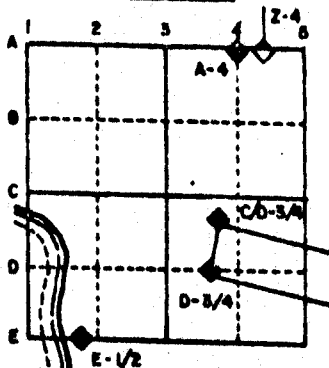
For Public Land Survey Corners in the
T. 2N., R. 10E.

CORNER CODE INDEX

	1	2	3	4	5	6	7	8	9	10	11	12	13	14	15	16	17	18	19	20	21	22	23	24	25
A																									
B																									
C	6																								
D		5																							
E			4																						
F				3																					
G					2																				
H	7																								
I		8																							
J			9																						
K				10																					
L					11																				
M						12																			
N							13																		
O								14																	
P									15																
Q										16															
R											17														
S												18													
T													19												
U														20											
V															21										
W																22									
X																	23								
Y																		24							
Z																			25						

PLACE MONUMENT SYMBOL (●) AT PROPER LOCATION ON ABOVE INDEX

EXAMPLE



SPRING VALLEY TWP
ROCK COUNTY WI

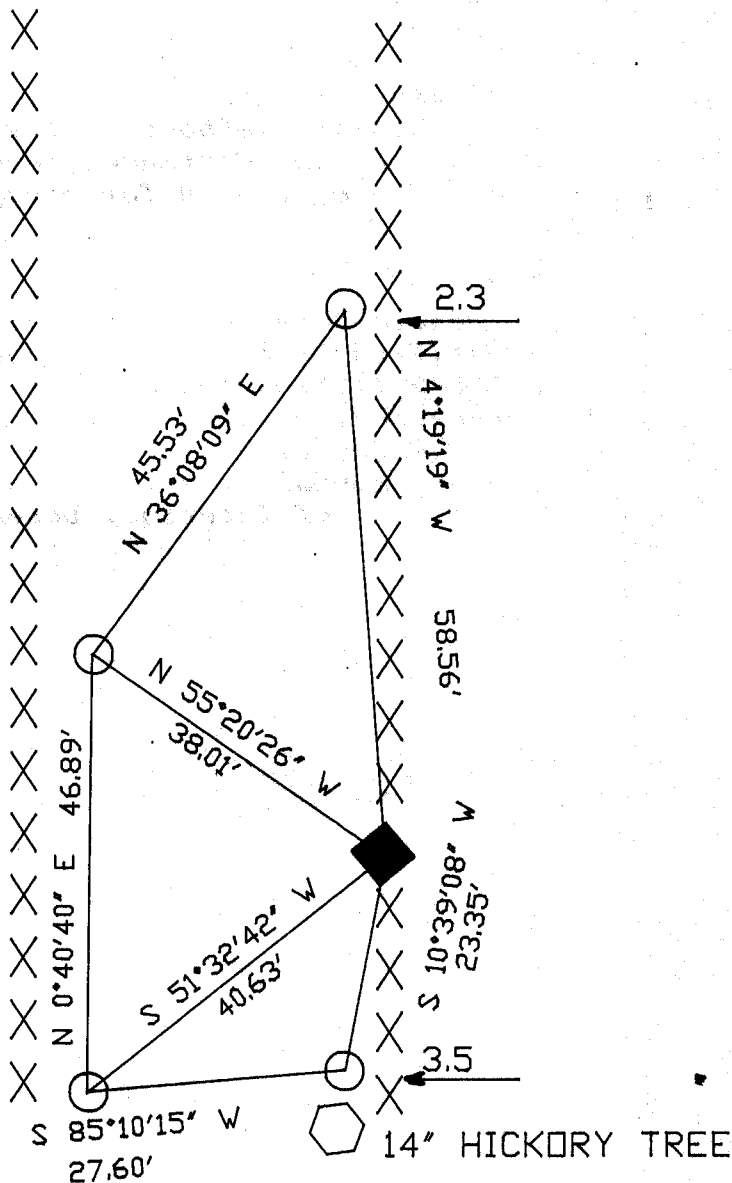
IF AVAILABLE STATE PLANE COORDINATES

North (Y) 235,390.01 Elev. (Z) _____
 East (X) 2,199,520.17 Zone _____
 Hor. Datum _____ Vert. Datum _____

e) **◆ CORNER MONUMENT** **○ WITNESS MONUMENT**
Poly WITH CARSONITE

BEARINGS ARE BASED ON: STATE PLANE
1929 DATUM

○ 1/2" X 24" REROD



FB 3

PG ~~11~~
11

MICROFILMED

SHEET ___ OF ___

CORNER CODE: **J 23**

(B) Describe any record evidence, monument evidence, occupational evidence, testimonial evidence or any other material evidence you considered, and whether the monument was found or placed.

1867 LOCKE VOL 1 PG 285 FOUND E. B.T. AND STAKE. SET STAKE SURROUNDED BY 3 FLAT LIMESTONES. SHOWS A VAR OF 3-00 TO NW CORNER AND 3-22 TO NE CORNER. USED CORNER TO SUBDIVIDE SECTION 12.

1874 RUGER VOL 2 PG 132 FOUND CORNER AS ESTABLISHED BY LOCKE. STAKE SURROUNDED BY 3 LIMESTONES.

DUG 1' DEEP, 3 NORTH, 2.5 SOUTH, AND 2 EAST AND WEST OF CORNER. FOUND NOTHING. PLACED POLY MONUMENT AND YELLOW CARSONITE POST NEXT TO MONUMENT. MONUMENT IS .4 EAST OF N/S FENCE. ESTABLISHED CORNER BY PRORATING LOCKE'S 1867 DISTANCES FROM THE NW TO NE CORNERS OF SECTION 13 AND BY PRORATING RUGER'S 1874 DISTANCES FROM THE CENTER OF SECTION 13 TO THE W 1/16th CORNER OF THE NE 1/4 OF SECTION 13. THIS IS IN HARMONY WITH OCCUPATION.

C) Was the corner restored through acceptance of (1) an obliterated evidence location, or, (2) a found perpetuated location?

ACCEPTED OBLITERATED EVIDENCE LOCATION.

D) Describe any material discrepancy between the location of the corner as restored or reestablished and the location of that corner as previously restored or reestablished by distance and direction. Show the discrepancy on the plan view drawing under (a), above. Show the distances between the corner as previously restored or reestablished and (1) the corner as restored or reestablished, and (2) to at least 4 of the witness monuments shown on the drawing in (a), above.

(E) Was the corner reestablished through lost corner proportionate methods? If so, show the method, including the directions and distances to other public land survey corners used as evidence or used for proportioning the corner location.

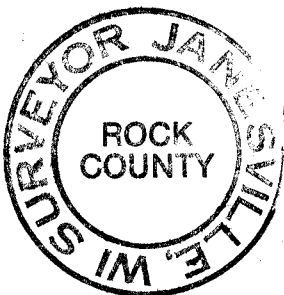
I, Donald Barnes, hereby certify that the corner points as identified by the corner code index were, in a field survey on, OCTOBER 11, 1989, established, re-established, monumented, re-monumented, recovered or restored as expressed below and in conformance with the regulations and rules as required in the current manual of survey instructions of the United States Department of Interior, Bureau of Land Management.

COUNTY SURVEYOR FILING DATA

Date of computer entry _____

Date microfilmed _____

Number of included sheets _____



AFFIX YOUR LAND SURVEYOR SEAL

CORNER CODE

J 23