

# U.S. PUBLIC LAND SURVEY MONUMENT RECORD

For Public Land Survey Corners in the  
T. 2 N., R. 10 E.

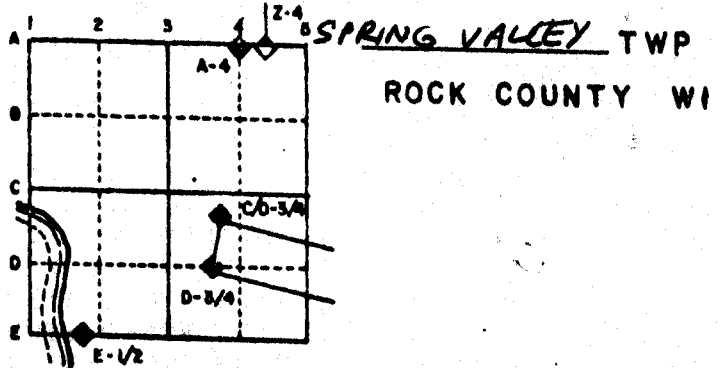
532

## CORNER CODE INDEX

|   |    |   |   |   |   |   |   |   |   |    |    |    |    |    |    |    |    |    |    |    |    |    |    |    |    |
|---|----|---|---|---|---|---|---|---|---|----|----|----|----|----|----|----|----|----|----|----|----|----|----|----|----|
|   | 1  | 2 | 3 | 4 | 5 | 6 | 7 | 8 | 9 | 10 | 11 | 12 | 13 | 14 | 15 | 16 | 17 | 18 | 19 | 20 | 21 | 22 | 23 | 24 | 25 |
| A |    |   |   |   |   |   |   |   |   |    |    |    |    |    |    |    |    |    |    |    |    |    |    |    |    |
| B |    |   |   |   |   |   |   |   |   |    |    |    |    |    |    |    |    |    |    |    |    |    |    |    |    |
| C | 6  |   |   |   |   |   |   |   |   |    |    |    |    |    |    |    |    |    |    |    |    |    |    |    |    |
| D |    |   |   |   |   |   |   |   |   |    |    |    |    |    |    |    |    |    |    |    |    |    |    |    |    |
| E |    |   |   |   |   |   |   |   |   |    |    |    |    |    |    |    |    |    |    |    |    |    |    |    |    |
| F |    |   |   |   |   |   |   |   |   |    |    |    |    |    |    |    |    |    |    |    |    |    |    |    |    |
| G | 7  |   |   |   |   |   |   |   |   |    |    |    |    |    |    |    |    |    |    |    |    |    |    |    |    |
| H |    |   |   |   |   |   |   |   |   |    |    |    |    |    |    |    |    |    |    |    |    |    |    |    |    |
| I |    |   |   |   |   |   |   |   |   |    |    |    |    |    |    |    |    |    |    |    |    |    |    |    |    |
| J |    |   |   |   |   |   |   |   |   |    |    |    |    |    |    |    |    |    |    |    |    |    |    |    |    |
| K |    |   |   |   |   |   |   |   |   |    |    |    |    |    |    |    |    |    |    |    |    |    |    |    |    |
| L | 16 |   |   |   |   |   |   |   |   |    |    |    |    |    |    |    |    |    |    |    |    |    |    |    |    |
| M |    |   |   |   |   |   |   |   |   |    |    |    |    |    |    |    |    |    |    |    |    |    |    |    |    |
| N |    |   |   |   |   |   |   |   |   |    |    |    |    |    |    |    |    |    |    |    |    |    |    |    |    |
| O |    |   |   |   |   |   |   |   |   |    |    |    |    |    |    |    |    |    |    |    |    |    |    |    |    |
| P | 19 |   |   |   |   |   |   |   |   |    |    |    |    |    |    |    |    |    |    |    |    |    |    |    |    |
| Q |    |   |   |   |   |   |   |   |   |    |    |    |    |    |    |    |    |    |    |    |    |    |    |    |    |
| R |    |   |   |   |   |   |   |   |   |    |    |    |    |    |    |    |    |    |    |    |    |    |    |    |    |
| S |    |   |   |   |   |   |   |   |   |    |    |    |    |    |    |    |    |    |    |    |    |    |    |    |    |
| T | 30 |   |   |   |   |   |   |   |   |    |    |    |    |    |    |    |    |    |    |    |    |    |    |    |    |
| U |    |   |   |   |   |   |   |   |   |    |    |    |    |    |    |    |    |    |    |    |    |    |    |    |    |
| V |    |   |   |   |   |   |   |   |   |    |    |    |    |    |    |    |    |    |    |    |    |    |    |    |    |
| W |    |   |   |   |   |   |   |   |   |    |    |    |    |    |    |    |    |    |    |    |    |    |    |    |    |
| X | 31 |   |   |   |   |   |   |   |   |    |    |    |    |    |    |    |    |    |    |    |    |    |    |    |    |
| Y |    |   |   |   |   |   |   |   |   |    |    |    |    |    |    |    |    |    |    |    |    |    |    |    |    |
| Z |    |   |   |   |   |   |   |   |   |    |    |    |    |    |    |    |    |    |    |    |    |    |    |    |    |

PLACE MONUMENT SYMBOL (◆) AT PROPER LOCATION ON ABOVE INDEX

### EXAMPLE

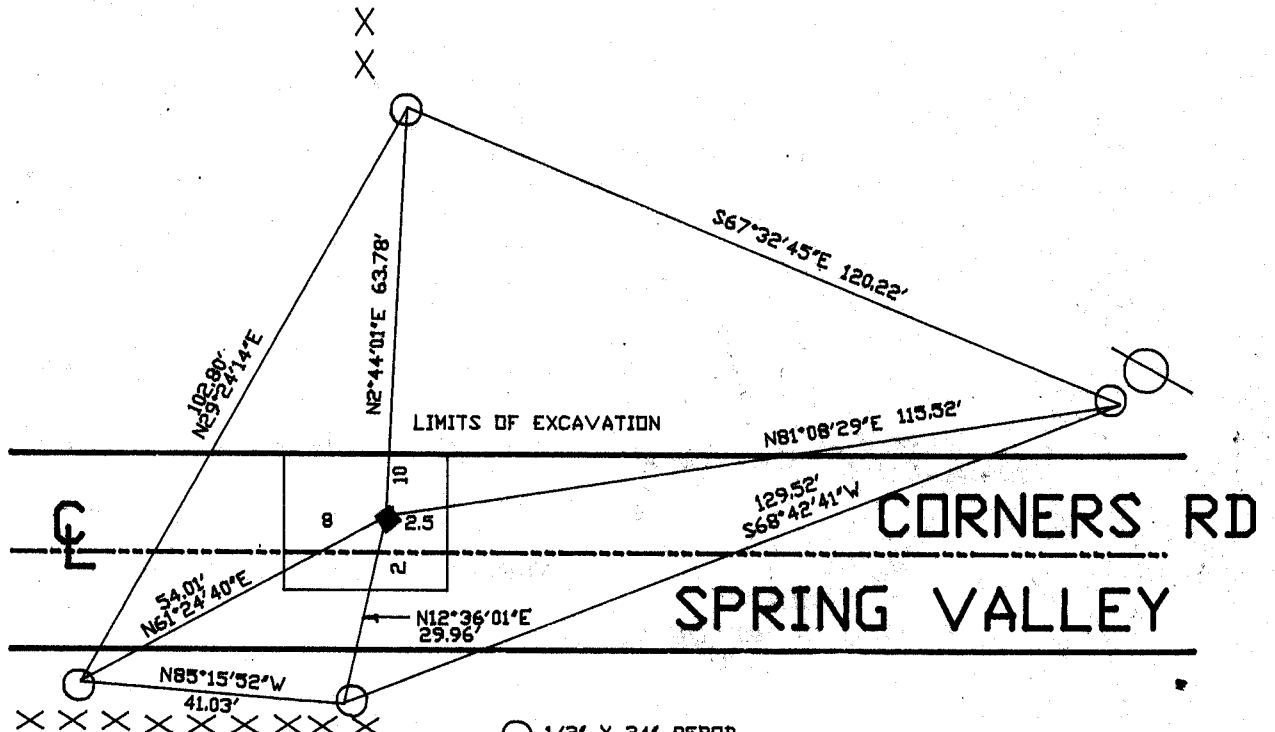


IF AVAILABLE  
STATE PLANE COORDINATES

North (Y) 240,706.15 Elev. (Z) \_\_\_\_\_  
 East (X) 2,199,409.81 Zone \_\_\_\_\_  
 Hor. Datum \_\_\_\_\_ Vert. Datum \_\_\_\_\_

e.)  CORNER MONUMENT  WITNESS MONUMENT

BEARINGS ARE BASED ON:



○ 1/2' X 24' REROD  
 FIELD BOOK # 3 PAGE 15

# MICROFILMED

SHEET \_\_\_ OF \_\_\_

CORNER CODE: **E 23**

(B) Describe any record evidence, monument evidence, occupational evidence, testimonial evidence or any other material evidence you considered, and whether the monument was found or placed.

- ✓1867 LOCKE VOL 1 PG 285. FOUND BTs BUT NOTES IRRECONCILABLY WRONG. SET FROM CORNERS OF SECTION. STAKE SURROUNDED BY FOUR FLAT LIMESTONES IN MOUND. SHOWS A DISTANCE OF 2690.29 TO THE NORTHWEST AND NORTHEAST CORNERS OF SECTION 12. SHOWS A VAR OF 3-24 FOR THE ENTIRE NORTH LINE OF SECTION 12. USED TO SUBDIVIDE SECTION 12.
- ✓1868 LOCKE VOL 1 PG 322 FOUND CORNER AS SET BY SELF. SEE SEC 12. USED TO SUBDIVIDE SECTION 1.
- ✓1869 LEE VOL 1 PG 344 FOUND CORNER SET BY LOCKE. SHOWS A DISTANCE OF 2545.62 TO CENTER OF SECTION 1.
- ✓1870 RUGER VOL 2 PG 17 FOUND STONE POST BY LOCKE. SHOWS A DISTANCE OF 2697.75 TO NORTHEAST CORNER OF SECTION 12.
- ✓1887 RUGER VOL 2 PG 419 STATES NOTHING ABOUT THE CORNER BUT USED IT FOR SUBDIVIDING THE NORTHWEST QUARTER OF SECTION 12.

DUG AND FOUND NOTHING. PLACED CORNER AS LOCKE DID. IT IS ON LINE BETWEEN THE NORTHEAST AND NORTHWEST CORNERS OF SECTION 12 AT THE MID POINT.

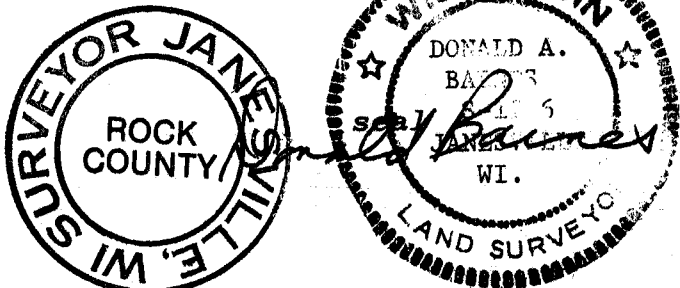
C) Was the corner restored through acceptance of (1) an obliterated evidence location, or, (2) a found perpetuated location?

ACCEPTED LOCKE'S OBLITERATED LOCATION.

D) Describe any material discrepancy between the location of the corner as restored or reestablished and the location of that corner as previously restored or reestablished by distance and direction. Show the discrepancy on the plan view drawing under (a), above. Show the distances between the corner as previously restored or reestablished and (1) the corner as restored or reestablished, and (2) to at least 4 of the witness monuments shown on the drawing in (a), above.

(E) Was the corner reestablished through lost corner proportionate methods? If so, show the method, including the directions and distances to other public land survey corners used as evidence or used for proportioning the corner location.

I, Donald Barnes, hereby certify that the corner points as identified by the corner code index were, in a field survey on, OCTOBER 23, 1989, established, re-established, monumented, re-monumented, recovered or restored as expressed below and in conformance with the regulations and rules as required in the current manual of survey instructions of the United States Department of the Interior, Bureau of Land Management.



AFFIX YOUR LAND SURVEYOR SEAL

COUNTY SURVEYOR FILING DATA

Date of computer entry \_\_\_\_\_

Date microfilmed \_\_\_\_\_

Number of included sheets \_\_\_\_\_  
CORNER CODE