

U.S. PUBLIC LAND SURVEY MONUMENT RECORD

For Public Land Survey Corners in:

WI ADMINISTRATIVE CODE A-E 7.08 REQUIREMENT

T. 2N., R. 10E

CORNER CODE INDEX

A	1	2	3	4	5	6	7	8	9	10	11	12	13	14	15	16	17	18	19	20	21	22	23	24	25
B																									
C	6																								
D																									
E																									
F																									
G	1	8																							
H																									
I																									
J																									
K																									
L	18	17	16																						
M																									
N																									
O																									
P	19	20	21																						
Q																									
R																									
S																									
T	30	29	28	27																					
U																									
V																									
W																									
X	31	32	33	34																					
Y																									
Z																									

SPRING VALLEY TWP

ROCK COUNTY WI

IF AVAILABLE
ROCK COUNTY COORDINATES PREFERRED

North _____ Elev. _____

East _____

Hor. Datum _____ Vert. Datum _____

LATITUDE _____ ELLIPS. HT. _____

LONGITUDE _____

GPS (X) _____ TRAVERSE (X) _____

BASED ON THE FOLLOWING CONTROL:

PLACE MONUMENT SYMBOL AT PROPER LOCATION ON ABOVE INDEX

CORNER MONUMENT

WITNESS MONUMENT

(a)

BEARINGS ARE BASED ON: _____

FIELD BOOK _____ PAGE # _____

SHEET _____ OF _____

SHOW A PLAN VIEW DRAWING DEPICTING THE CORNER MONUMENT AND SURROUNDING PHYSICAL FEATURES, INCLUDING THE EXCAVATION AREA AND DEPTH.

PLANNING & ZONING COMMITTEE ADOPTED THE ABOVE FORM ON 12/2/1982

CORNER CODE A-23

SP512

(B) Describe any record evidence, monument evidence, occupational evidence, testimonial evidence or any other material evidence you considered, and whether the monument was found or placed.

1833 MULLETT VAR 7-40E

WEST ON SOUTH SIDE SEC 36

2640 SET QUARTER SEC POST

BUR OAK 9 N29W 70.62'

RUB OAK 6 N42E 163.02'

2970 ENTER PRAIRIE

5280 SET POST CORNER SECTIONS 35 & 36

IN PRAIRIE AND MADE A MOUND

1868 LOCKE VOL 1 PG 322 FOUND BTs DIST TO N B.T. 1.57 SET W.O. STAKE SURROUNDED BY 3 SANDSTONES. CALLS FOR 2616.90 TO NW COR SEC 1 & 2480.94 TO CENTER OF SEC 1.

1870 RUGER VOL 2 PG 36 FOUND COR EST. BY LOCKE. CALLS FOR 1320.66 TO 1/16TH COR TO NORTH, 2641.32 TO CENTER OF SEC 36, 659.92 TO COR TO EAST, 2639.68 TO NE COR SEC 1.

1874 RUGER VOL 2 PG 130 FOUND COR SET BY LOCKE. CALLS FOR DISTANCE OF 1242.45 TO 1/16TH COR TO SOUTH & 2476.65 TO CENTER OF SEC 1 AND 2610.96 NW COR SEC 1.

1877 RUGER VOL 2 PG 232 FOUND COR EST. BY LOCKE.

1880 LEE VOL 2 PG 313 FOUND COR SET BY LOCKE, CALLS FOR 1861.20 TO PROPERTY CORNER TO SOUTH AND 2481.60 TO LOCKE'S CORNER AT CENTER OF SEC 1.

DUG & FOUND NOTHING. PLACED CORNER ON LINE WITH N/S FENCE AND CENTER OF PAVEMENT. THIS IS IN HARMONY WITH RECORD DISTANCES. SINCE THE NW COR OF SEC 1 & THE SW COR OF SEC 36 ARE COMMON THE N1/4 COR OF SEC 1 & THE S 1/4 COR SEC 36 ARE COMMON.

C) Was the corner restored through acceptance of (1) an obliterated evidence location, or, (2) a found perpetuated location?
RESTORED CORNER THROUGH ACCEPTANCE OF OBLITERATED

D) Describe any material discrepancy between the location of the corner as restored or reestablished and the location of that corner as previously restored or reestablished by distance and direction. Show the discrepancy on the plan view drawing under (a), above. Show the distances between the corner as previously restored or reestablished and (1) the corner as restored or reestablished, and (2) to at least 4 of the witness monuments shown on the drawing in (a), above.

(E) Was the corner reestablished through lost corner proportionate methods? If so, show the method, including the directions and distances to other public land survey corners used as evidence or used for proportioning the corner location.

I, Donald Barnes, hereby certify that the corner location as identified by the corner code index was determined by me under my direction and control and that this U.S. Public Land Survey Monument Record is correct and complete to the best of my knowledge and belief.

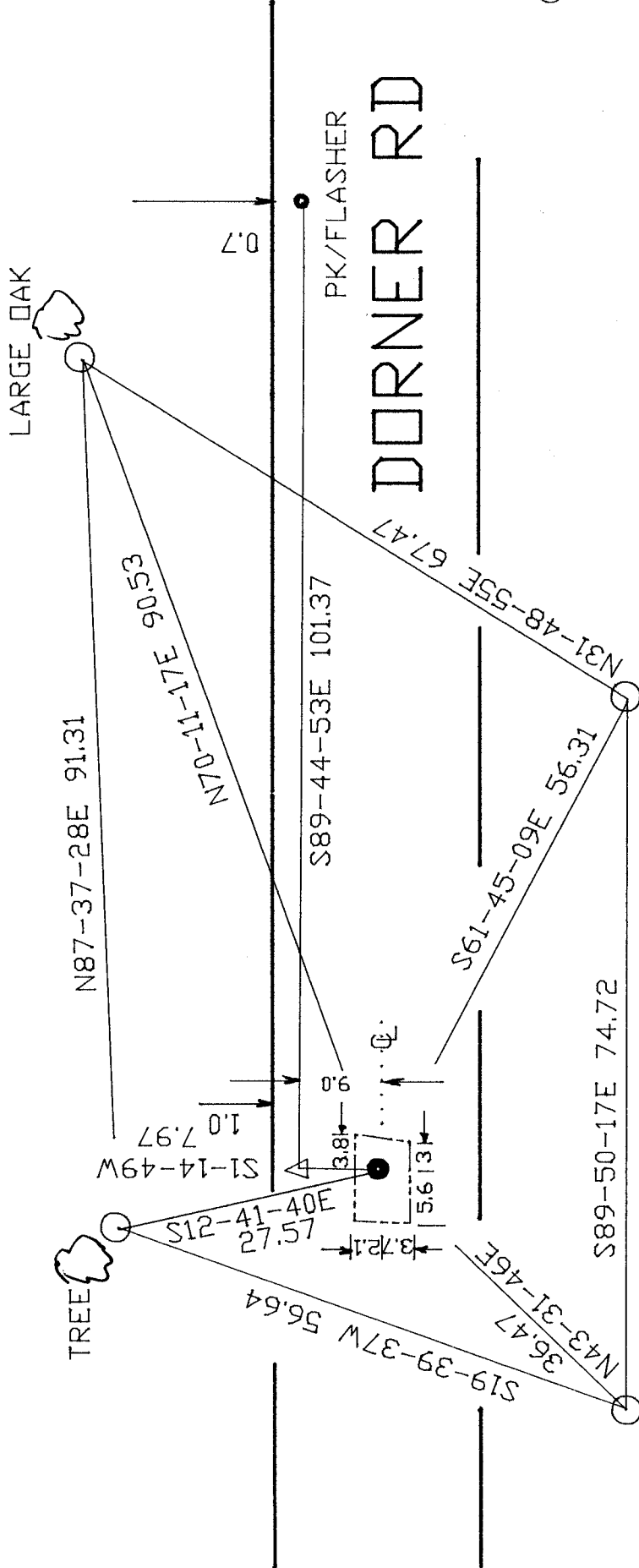
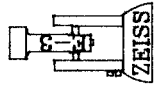
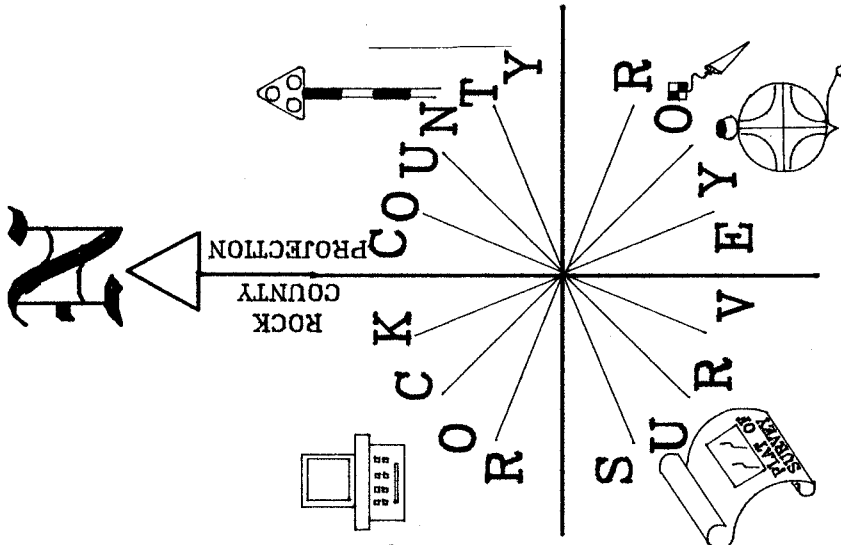
Donald Barnes
Seal
April 22, 1998

Number of included sheets _____

emboss

A-23

CORNER CODE



LIMITS OF EXCAVATION

1/4 COR ON LINE WITH N/S FENCE & 1' NORTH OF

△ R/R SPIKE

○ 3/4X24 REROD

SPRING VALLEY BK #3 PG 69 & CENTER OF PVMT. OBSERVATION SHEET #5000 & 5001

N 1/4 COR SEC 1 T2N R10E / S 1/4 COR SEC 36 T3N R10E

Ronald Barnes
 APR 22, 1998
 EMBOSSED SEAL

A-23