

# U. S. PUBLIC LAND SURVEY MONUMENT RECORD

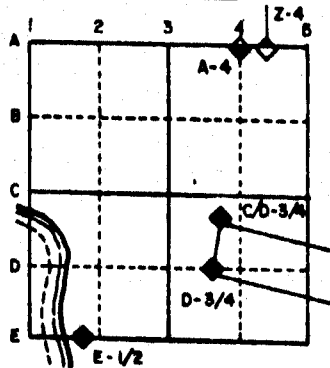
For Public Land Survey Corners in the  
T. 4 N., R. 11 E.

## CORNER CODE INDEX

	1	2	3	4	5	6	7	8	9	10	11	12	13	14	15	16	17	18	19	20	21	22	23	24	25
A																									
B																									
C	6	5	4	3	2																				
D																									
E																									
F																									
G	7	6	5	4	3	2																			
H																									
I																									
J																									
K																									
L	19	17	16	15	14	13																			
M																									
N																									
O																									
P	19	20	21	22	23	24																			
Q																									
R																									
S	30	29	28	27	26	25																			
T																									
U																									
V																									
W																									
X	31	32	33	34	35	36																			
Y																									
Z																									

PLACE MONUMENT SYMBOL (◆) AT PROPER LOCATION ON ABOVE INDEX

### EXAMPLE



PORTER TWP  
ROCK COUNTY WI

### IF AVAILABLE STATE PLANE COORDINATES

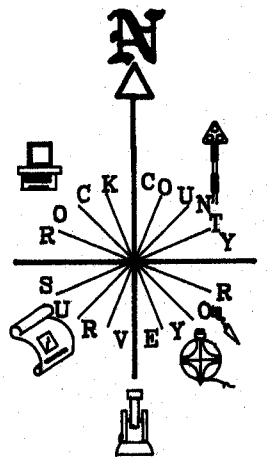
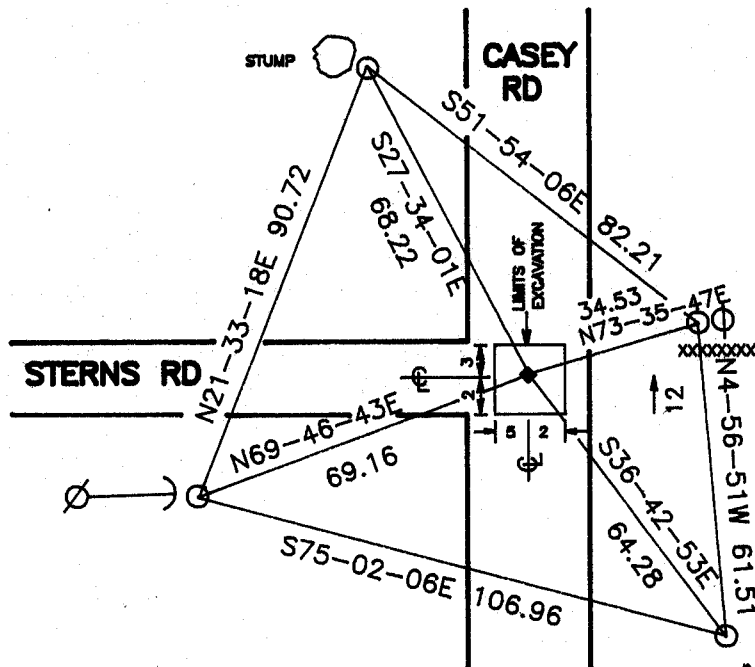
North (Y) 320,801.06      Eleve. (Z) \_\_\_\_\_  
East (X) 448,078.60      Zone \_\_\_\_\_  
Hor. Datum COUNTY      Vert. Datum \_\_\_\_\_

(a.)

◆ CORNER MONUMENT

○ WITNESS MONUMENT

BEARINGS ARE BASED ON:



○ 3/4x24" REROD WITH PLASTIC CAP  
FB# 3 PG 51

FIELD BOOK \_\_\_\_\_ PAGE # \_\_\_\_\_

**MICROFILMED**

SHOW A PLAN VIEW DRAWING DEPICTING THE CORNER MONUMENT AND SURROUNDING PHYSICAL FEATURES, INCLUDING THE EXCAVATION AREA AND DEPTH. THE CORNER MONUMENT SHALL HAVE THE FOLLOWING CHARACTERISTICS: 1) HAVE AT LEAST TWO PREDETERMINED BREAK-OFF POINTS. 2) IF BROKEN, LEAVE A PERMANENTLY MAGNETIZED REMNANT AT THE ORIGINAL POINT. 3) MUST BE EXTENDABLE. 4) THE CAP IS INSCRIBED: ROCK COUNTY SURVEY MONUMENT - PENALTY FOR DISTURBING MARKER. 5) OR AN EXISTING CUT LIMESTONE. AN IRON PIPE 1 1/2" x 4'0" (MINIMUM) MAY BE USED IN AREAS WHERE GROUND WATER IS WITHIN ONE FOOT OF THE SURFACE. IF THE CORNER IS OCCUPIED BY AN IMPROVEMENT (MANHOLE, BURIED CABLE, ETC.) ANY DURABLE, DISTINCT MONUMENT MAY BE USED. CORNERS SHALL BE REFERENCED WITH AT LEAST 4 DURABLE WITNESS MONUMENTS. WITNESS MONUMENTS SHALL BE MADE OF CONCRETE, NATURAL STONE, IRON OR OTHER EQUALLY DURABLE MATERIAL, EXCEPT WOOD. DESCRIBE THE CORNER AND THE WITNESS MONUMENTS.

CORNER CODE:

G13

(B) Describe any record evidence, monument evidence, occupational evidence, testimonial evidence or any other material evidence you considered, and whether the monument was found or placed.

1833 HARRISON - ORIGINAL SURVEYOR "QUARTER SECTION CORNER. SIT A POST & RAISED MOUND OF EARTH & SOD." CALLS FOR 2640 TO THE NE AND SE CORNERS OF SECTION 9.

1856 PORTER TOWN RECORDS PAGE 8 "BEGINNING AT THE N.W. CORNER OF SECTION 3 & 4, 9 & 10, 120 CHAINS TO THE 1/4 POST ON THE WEST LINE OF SECTION 10; THENCE EAST ON THE E & W 1/4 LINE OF SECTION 10, 29 CHAINS TO A POINT UNITING WITH A ROAD RUNNING N & S ON THE "'''" "THE ABOVE DESCRIBED ROUTE IS HEREBY DECLARED TO BE A PUBLIC HIGHWAY FOUR ROADS WIDE".

1858 PORTER TOWN RECORDS PAGE 12 "THENCE NORTH ON THE SECTION LINE BETWEEN SECTIONS 21 & 22, 15 & 16, 9 & 10, 181.80 CHAINS TO THE N.E. CORNER OF SECTION 9. ALSO BEGINNING AT THE N.E CORNER OF THE WEST 1/2 OF THE NW 1/4 OF SECTION 15; THENCE WEST ON THE SECTION LINE BETWEEN SECTIONS 10 & 15, 9 & 16, 100.00 CHAINS TO THE SW CORNER OF SECTION 9 AND THE ABOVE DESCRIBED ARE THE CENTER OF HIGHWAYS FOUR RODS WIDE."

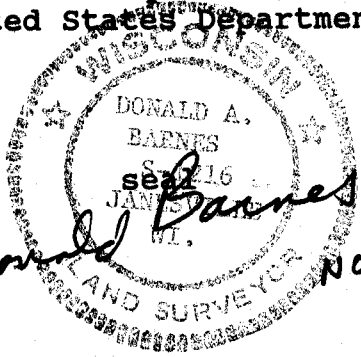
DUG 4' DEEP AND FOUND NOTHING.

C) Was the corner restored through acceptance of (1) an obliterated evidence location, or, (2) a found perpetuated location? CORNER WAS RESTORED THROUGH ACCEPTANCE OF OBLITERATED EVIDENCE LOCATION. THE CENTER OF THE N/S PAVEMENT AND THE CENTER OF THE PAVEMENT TO THE WEST IS IN HARMONY WITH THE ROAD RECORDS. THE DISTANCES FROM THE QUARTER CORNER TO THE SE AND NE CORNERS OF SECTION 9 IS ALSO IN HARMONY WITH THE DISTANCES ALONG THE WEST LINE OF SECTIONS 4,9, AND THE W 1/4 OF SECTION 3.

D) Describe any material discrepancy between the location of the corner as restored or reestablished and the location of that corner as previously restored or reestablished by distance and direction. Show the discrepancy on the plan view drawing under (a), above. Show the distances between the corner as previously restored or reestablished and (1) the corner as restored or reestablished, and (2) to at least 4 of the witness monuments shown on the drawing in (a), above.

(E) Was the corner reestablished through lost corner proportionate methods? If so, show the method, including the directions and distances to other public land survey corners used as evidence or used for proportioning the corner location.

I, Donald Barnes, hereby certify that the corner points as identified by the corner code index were, in a field survey on, November 8, 1993, established, re-established, monumented, re-monumented, recovered or restored as expressed below and in conformance with the regulations and rules as required in the current manual of survey instructions of the United States Department of Interior, Bureau of Land Management.



COUNTY SURVEYOR FILING DATA

Date of computer entry \_\_\_\_\_

Date microfilmed \_\_\_\_\_

Number of included sheets \_\_\_\_\_  
CORNER CODE

AFFIX YOUR LAND SURVEYOR SEAL