

Paper weight-110# (minimum)

Black nonfading ink required

U.S. PUBLIC LAND SURVEY MONUMENT RECORD

For Public Land Survey Corners In:
T. 4 N. R. 11 E. 4th P.M.
CORNER CODE INDEX

WI ADMINISTRATIVE CODE A-E 7.08 REQUIREMENT
REV 10/23/2004 USMONREC.DWG

PORTER TWP
ROCK COUNTY WI

IF AVAILABLE
ROCK COUNTY COORDINATES PREFERRED

A	1	2	3	4	5	6	7	8	9	10	11	12	13	14	15	16	17	18	19	20	21	22	23	24	25	A
B		6					5				4				3			2			1					B
C																										C
D																										D
E																										E
F																										F
G																										G
H																										H
J																										J
K																										K
L																										L
M																										M
N																										N
O																										O
P																										P
Q																										Q
R																										R
S																										S
T																										T
U																										U
V																										V
W																										W
X																										X
Y																										Y
Z																										Z

North _____ Elev. _____

East _____

Hor. Datum _____ Vert. Datum _____

LATITUDE _____ ELLIPS. HT. _____

LONGITUDE _____

NAD83(91) _____ NETWORK ADJ. YR _____

GPS (X) _____ TRAVERSE (X) _____

BASED ON THE FOLLOWING CONTROL:

PLACE MONUMENT SYMBOL AT PROPER LOCATION ON ABOVE INDEX

CORNER MONUMENT

WITNESS MONUMENT

BEARINGS ARE BASED ON: _____

FIELD BOOK _____ PAGE # _____

SHEET 1 OF 3

SHOW A PLAN VIEW DRAWING DEPICTING THE CORNER MONUMENT AND SURROUNDING PHYSICAL FEATURES, INCLUDING THE EXCAVATION AREA AND DEPTH.

PLANNING & ZONING COMMITTEE ADOPTED THIS FORM ON 12/2/1982

CORNER CODE V-3

PO602

N1/4CORSEC31

(B) Describe any record evidence, monument evidence, occupational evidence, testimonial evidence or any other material evidence you considered, and whether the monument was found or placed.

1833 (NOV) HARRISON T4N R11E 4TH MER. WEST BET. SECS 30 & 31

2640.00 SET POST FOR COR TO 1/4 SEC {W.O. 12 S40W 52.8'; BURR OAK 18 S41W 50.16' {BURR OAK 18; WHITE OAK 12} MARKED

5214.0 INT. WEST BDY 16.5' ? 1650'N OF POST {BURR OAK 24 S54E 52.80'; BURR OAK 18 N70E 19.8' LAND ROLLING 2ND RATE ?????? TIMBERED WITH RED & BURR OAK.

1848 STEBBINS PORTER TWP RD REC BK 1 PG 3 BEGINNING AT THE 1/4 POST OF THE SOUTH LINE OF SEC 18 T4N R11E EAST; THENCE SOUTH ON THE 1/4 LINE OF SEC 19 5280' TO THE 1/4 POST ON THE NORTH LINE OF SEC 30; THENCE SOUTH ON THE 1/4 LINE OF SEC 30 5280' TO THE 1/4 POST ON THE SOUTH LINE OF SEC 30; THENCE SOUTH ON THE 1/4 LINE OF SEC 31 990' TO THE CENTER OF THE RD LEADING FROM JANESVILLE TO MADISON. THE WHOLE LENGTH OF THE RD IS 11550. VARIATION OF NEEDLE 7 3/4 HARRISON STEBBINS CO. SURVEYOR.

1903 PORTER TWP RD REC BK 3 PG 13 BEGINNING ON THE NORTH AND SOUTH QUARTER SECTION LINE RUNNING NORTH AND SOUTH THROUGH SEC 31, T4N R11E, ROCK COUNTY AT A POINT WHERE THE PUBLIC HIGHWAY NOW RUNNING NORTH AND SOUTH THROUGH THE CENTER OF SECTION 7, 18,19,30, AND A PART OF 31 IN SAID T4 INTERSECTS THE PUBLIC HIGHWAY RUNNING FROM EVANSVILLE TO JANESVILLE AND KNOWN AS THE MADISON ROAD AND RUN THENCE DUE SOUTH ALONG THE QUARTER SECT LINE THROUGH SAID SEC 31 IN SAID T4 TO THE SOUTH LINE OF SAID SEC 31 SAID PROPOSED HIGHWAY CROSSING LAND OWNED BY W.B. VAN WART, D.C. & EDD GRIFFITH, JACOB BENKERT, JACOB ELMEN AND THE CHICAGO & NORTHWESTERN RAILWAY COM.

AFTERWARDS UPON APPEAL TAKEN BY FRANK MONTGOMERY FROM THE DETERMINATION SO REFUSING TO LAY OUT SUCH HIGHWAY AS AFORESAID, COMMISSIONERS ERE DULY APPOINTED TO REVIEW THE SAID DETERMINATION AND SUCH PROCEEDINGS WERE DULY HAD BEFORE THEM THAT THE SAME WAS FINALLY REVERSED AS APPEARS BY THEIR DECISION "*****" BEGINNING ON THE NORTH AND SOUTH QUARTER SEC LINE RUNNING NORTH & SOUTH THROUGH SEC 31, T4N R11E AT A POINT WHERE THE PUBLIC HIGHWAY NOW RUNNING NORTH AND SOUTH THROUGH THE CENTER OF SEC 7-18-19-30 AND A PART OF 31 IN SAID T4 INTERSECTS THE PUBLIC HIGHWAY RUNNING DUE SOUTH ON QUARTER LINE TO WITHIN 165' OF LAND OWNED BY CHICAGO & NORTHWESTERN RAILROAD CO. CROSSES SAID 1/4 LINE; THENCE SOUTH EAST TO LAND OWNED BY CHICAGO & NORTHWESTERN RAILROAD TO A POINT 164' EAST OF RAILROAD BRIDGE NOW ON SAID QUARTER LINE; THENCE SOUTH ACROSS LAND OWNED BY CHICAGO & NORTHWESTERN RAILROAD CO. AS NEAR AS PRACTICABLE; THENCE SOUTH WEST TO A POINT WHERE SAID QUARTER LINE INTERSECTS THE SOUTH LINE OF SAID SEC 31 SAID LINE IS THE CENTER OF SAID HIGHWAY AND THE SAME IS LAID OUT OF THE WIDTH OF 66'. E.M. STEBBINS TOWN CLERK.

1874 RUGER PG 165 FD & #3652 STUMPS OF SW BT & WHERE STUMP OF NW BT HAD BEEN DUG UP. SET HH STONE 16X9X10 & SURROUNDED IT BY 4 HH STONES. DROVE STAKES 33.00' EAST & WEST.

SHEET 1 OF 3
CORNER CODE V-3

Donald Barnes
3/18/2009

P0602 N1/4CORSEC31
 1874 RUGER VOL 2 PG 179 FD COR SET BY SELF SEE PAGE 121
 VAR 6-39 2659.80 TO CENTER OF SEC 30, VAR 6-39
 5324.88 TO N 1/4 COR SEC 30
 1976 BARNES VOL 5 PG 179 DUG LARGE 11X20 4' DEEP HOLE &
 FD NOTHING. SET S 1/4 COR SEC ON THE N 1/4 COR AND
 THE CENTER LINE AT THE PRORATED DISTANCE FROM THE
 CENTER. SET ALUM. SHORT PK TIES; 10.00 TO THE SW &
 SE. 5.7 WEST OF EAST PVMT EDGE. REFERENCED SAME.
 1976 LEE CSM VOL 6 P 612 CI NORTH 2663.70 TO PK @ CENTER
 OF SEC 30.
 1976 COMBS CSM VOL 6 PG 99 STATES NOTHING ABOUT MON.
 1983 COMBS CSM VOL 11 PG 233 ALUM.
 1987 COMBS #12832 STATES NOTHING ABOUT MON. SOUTH
 141.83 TO POB OF SURVEY.
 1992 KARNS CSM VOL 15 PG 434 ROCK COUNTY MON.
 WESTERLY 33.00 TO IP @ PROP COR. IP 100 NORTH OF
 WESTERLY IP
 1994 SCHROEDER #9676
 2000 COMBS CSM VOL 23 PG 392 ALUM. MON. S89-12-15W
 2590.98 TO CUT STONE @ NW COR SEC 31, SOUTH ALONG
 N/S 1/4 LINE OF SEC 31.
 2001 COMBS CSM VOL 25 PF 161 ALUM. MON. S89-12-15W
 2590.98 TO CUT STONE @ NW COR SEC 31, SOUTH ALONG
 N/S CENTER OF SEC 31.

FD ALUM MON THAT IS DISOLVING. PLACED 3/4X24 REROD IN
 INTERSECTION OF MON. VANES. FD NE & SE REFERENCE
 MONUMENTS. FD THE NW REFERENCE MONUMENT IN THE TOP OF
 THE FENCE. MONUMENT IS IN HARMONY WITH RECORD DISTANCES.

C) Was the corner restored through acceptance of (1) an obliterated evidence location, or, (2) a found
 perpetuated location?

ACCEPTED ALUM. MON.

D) Describe any material discrepancy between the location of the corner as restored or reestablished
 and the location of that corner as previously restored or reestablished by distance and direction. Show
 the discrepancy on the plan view drawing under (a), above. Show the distances between the corner as
 previously restored or reestablished and (1) the corner as restored or reestablished, and (2) to at least 4
 of the witness monuments shown on the drawing in (a), above.

NONE

(E) Was the corner reestablished through lost corner proportionate methods? If so, show the method,
 including the directions and distances to other public land survey corners used as evidence or used for
 proportioning the corner location.

NO

I, **Donald Barnes**, hereby certify that the corner location as identified by the corner code index
 was determined by me under my direction and control and that this U.S. Public Land Survey
 Monument Record is correct and complete to the best of my knowledge and belief.

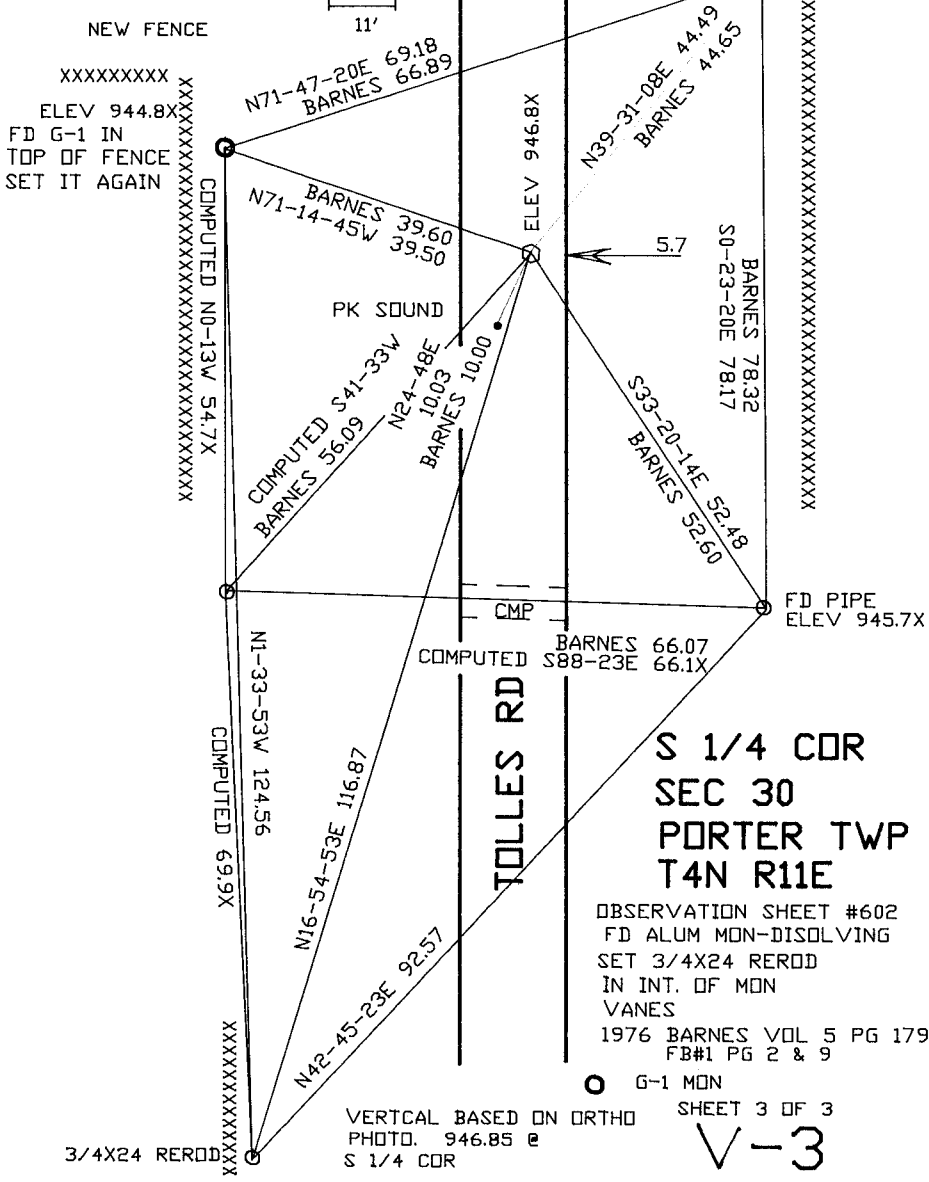
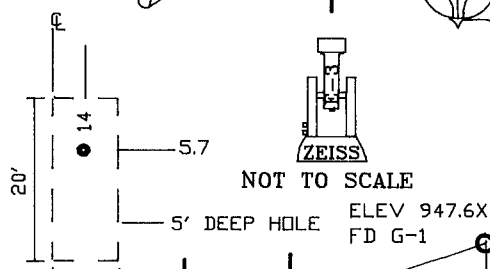
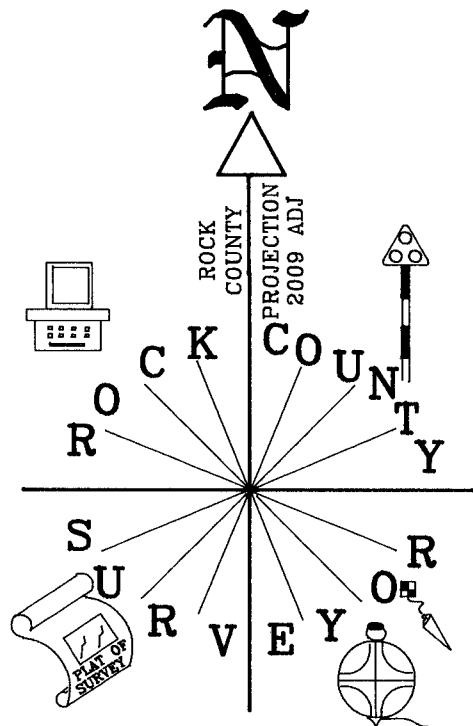
Donald Barnes
 Emboss

SHEET 2 OF 3

3/18/2009

CORNER CODE V-3

A.E. 7.08 REQUIREMENT



Donald Barnes
 3/18/2009