

Paper weight-110# (minimum)

Black nonfading ink required

U.S. PUBLIC LAND SURVEY MONUMENT RECORD

For Public Land Survey Corners In:

WI ADMINISTRATIVE CODE A-E 7.08 REQUIREMENT

T. 4 N. R. 11 E. 4th P.M.

REV 10/23/2004

USMONREC.DWG

CORNER CODE INDEX

PORTER TWP

ROCK COUNTY WI

IF AVAILABLE

ROCK COUNTY COORDINATES PREFERRED

A	1	2	3	4	5	6	7	8	9	10	11	12	13	14	15	16	17	18	19	20	21	22	23	24	25	A
B			6				5					4				3				2				1		B
C																										C
D																										D
E																										E
F																										F
G																										G
H																										H
J																										J
K																										K
L																										L
M																										M
N																										N
O																										O
P																										P
Q																										Q
R																										R
S																										S
T																										T
U																										U
V																										V
W																										W
X																										X
Y																										Y
Z																										Z

North _____ Elev. _____

East _____

Hor. Datum _____ Vert. Datum _____

LATITUDE _____ ELLIPS. HT. _____

LONGITUDE _____

NAD83(91) _____ NETWORK ADJ. YR _____

GPS (X) _____ TRAVERSE (X) _____

BASED ON THE FOLLOWING CONTROL:

PLACE MONUMENT SYMBOL AT PROPER LOCATION ON ABOVE INDEX

CORNER MONUMENT

WITNESS MONUMENT

BEARINGS ARE BASED ON: -----

FIELD BOOK _____ PAGE # _____

SHEET 1 OF 2

SHOW A PLAN VIEW DRAWING DEPICTING THE CORNER MONUMENT AND SURROUNDING PHYSICAL FEATURES, INCLUDING THE EXCAVATION AREA AND DEPTH.

PLANNING & ZONING COMMITTEE ADOPTED THIS FORM ON 12/2/1982

CORNER CODE T-#3

PO4594

CENSEC30

(B) Describe any record evidence, monument evidence, occupational evidence, testimonial evidence or any other material evidence you considered, and whether the monument was found or placed.

- 1874 RUGER VOL 2 PG 179 DROVE STAKE SURROUNDED IT WITH 4 HH. VAR 7-35 1327.26 TO STAKE SURROUNDED BY 4 HH @ N 1/16TH COR OF SE 1/4, 2654.52 TO E 1/4 COR SEC 30, VAR7-35 1326.60 TO STAKE SURROUNDED BY 3 HH @ N 1/16TH COR OF SW 1/4, VAR 7-35 TO LARGE HH AT W 1/4 COR, VAR 6-39 1332.54 TO STAKE SURROUNDED BY 4 HH @ W 1/16TH OF NE 1/4, VAR 6-39 2665.08 TO STAKE WITH LS ON STOUH & HH ON NORTH, VAR 6-39 1329.90 TO STAKE SURROUNDED BY 3 HH @ W 1/16TH COR OF SE 1/4, & VAR 6-39 2659.8 TO FD COR SET BY SELF [HH 16X9X10 SURROUNDED BY 4 HH] @ S 1/4 COR.
- 1970 BATTERMAN VOL 4 PG 439 CALLS FOR COR & REFERENCED IT. STATES NOTHING ABOUT MON. BEING SET OR A MONUMENT FOUND.
- 1971 LEE VOL 4 PG 493 SET RE-REFERENCES OF REFERENCES FD IN VOL 4 PG 439.
- 1976 BARNES VOL 5 PG 177 FD CONC NAIL THAT AGREED WITH ACCESSORY COR. CENTER FD TO BE ON LINE BETWEEN W 1/4 COR & E 1/4 COR. 2658.65 TO E 1/4 COR, 2574.05 TO W 1/4 COR, 2663.67 TO S 1/4 COR, & 2668.87 TO N 1/4 COR.
- 1977 BARNES VOL 5 PG 268 SET ALUM. MON
- 1976 LEE CSM VOL 6 PG 12 PK N89-35-50E TO 1/16TH COR, SOUTH 2663.70 TO CI @ S 1/4 COR SEC 30
- 1993 SCHROEDER CSM VOL 17 PG 47 CALLS FOR CENTER & USED FOR LINE FOR CSM LOT. NE COR OF LOT IS 473.60 FROM E 1/4 COR SEC 30. STATES NOTHING ABOUT MONUMENTS.

FD 1" PIPE IN MIDDLE OF DETEROITING ALUM. MON AND REFERENCE MONUMENTS. MON IS 1 1/2 EAST OF CENTER OF PVMT.

C) Was the corner restored through acceptance of (1) an obliterated evidence location, or, (2) a found perpetuated location?

ACCEPTED PIPE IN ALUM. MON

D) Describe any material discrepancy between the location of the corner as restored or reestablished and the location of that corner as previously restored or reestablished by distance and direction. Show the discrepancy on the plan view drawing under (a), above. Show the distances between the corner as previously restored or reestablished and (1) the corner as restored or reestablished, and (2) to at least 4 of the witness monuments shown on the drawing in (a), above.

NO

(E) Was the corner reestablished through lost corner proportionate methods? If so, show the method, including the directions and distances to other public land survey corners used as evidence or used for proportioning the corner location.

I, Donald Barnes, hereby certify that the corner location as identified by the corner code index was determined by me under my direction and control and that this U.S. Public Land Survey Monument Record is correct and complete to the best of my knowledge and belief.

Donald

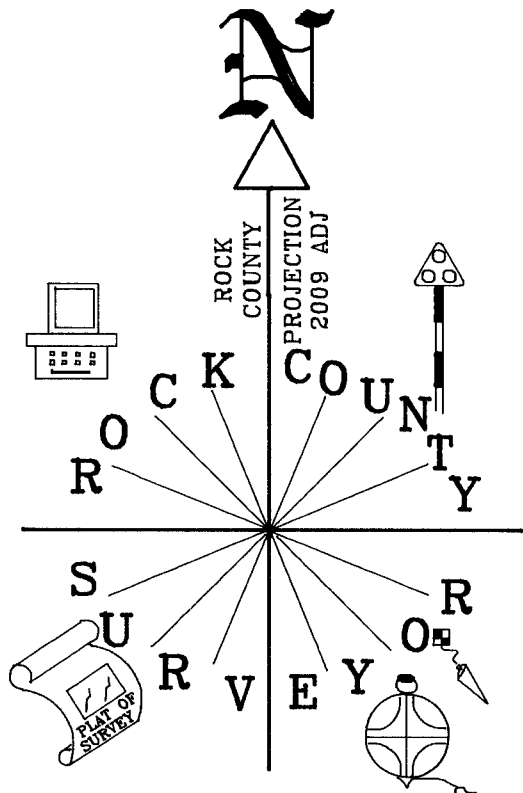
Barnes

3-18-2009

SHEET 1 OF 2

CORNER CODE T-3

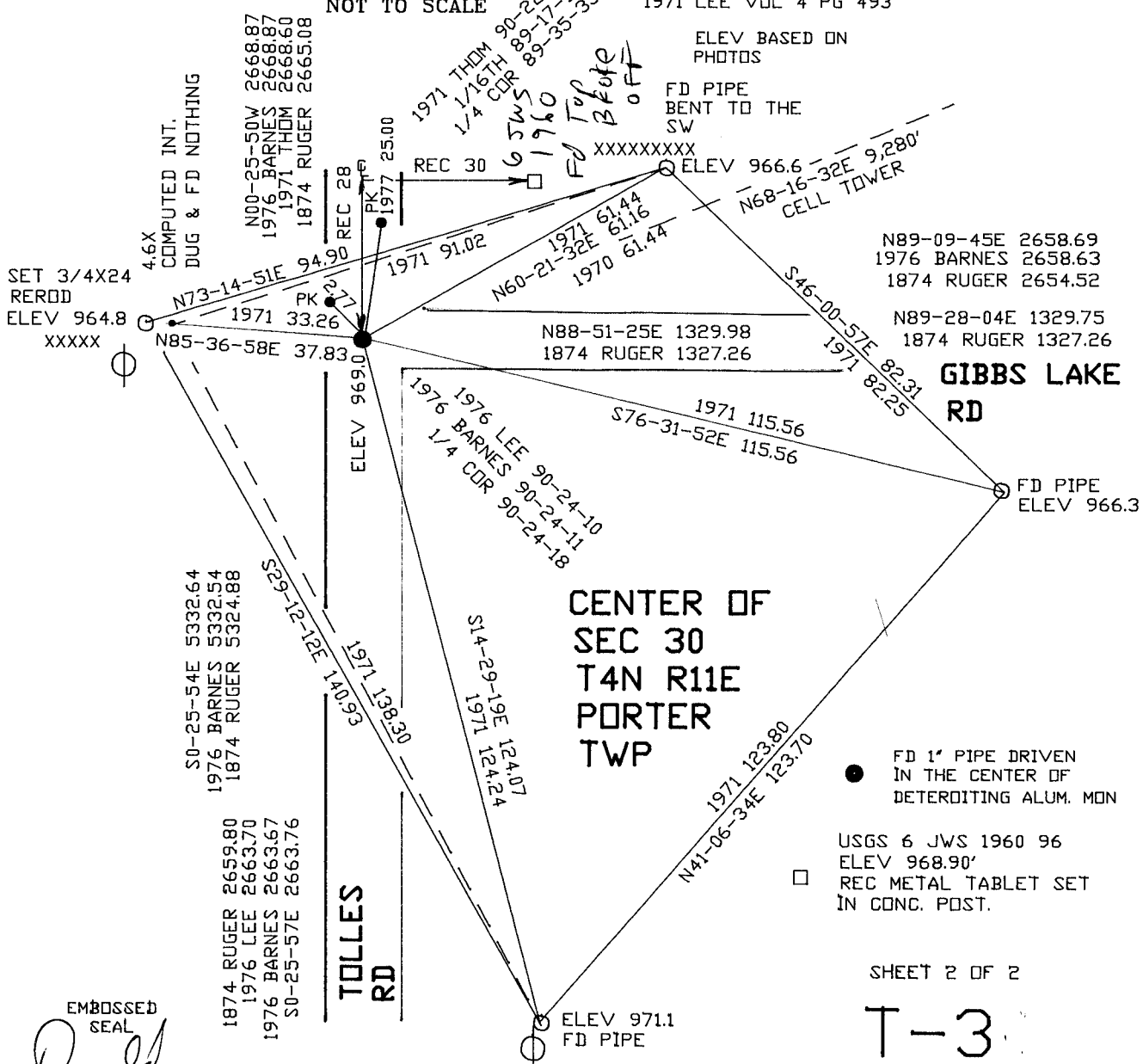
A.E. 7.08 REQUIREMENT



NOT TO SCALE

1970 BATTERMAN VOL 4 PG 439
1971 LEE VOL 4 PG 493

ELEV BASED ON PHOTOS



SHEET 2 OF 2

T-3

EMBOSSSED SEAL
Dwight Barnes
3-20-2009