

# U.S. PUBLIC LAND SURVEY MONUMENT RECORD

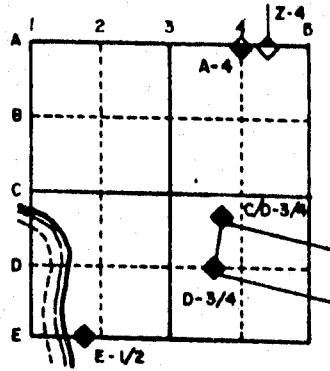
For Public Land Survey Corners in the  
T. 4 N., R. 11 E.

## CORNER CODE INDEX

	1	2	3	4	5	6	7	8	9	10	11	12	13	14	15	16	17	18	19	20	21	22	23	24	25
A																									
B	6																								
C		5																							
D			4																						
E				3																					
F					2																				
G																									
H	7																								
I		8																							
J			9																						
K				10																					
L					11																				
M						12																			
N	13																								
O		14																							
P			15																						
Q				16																					
R					17																				
S						18																			
T							19																		
U								20																	
V									21																
W										22															
X											23														
Y												24													
Z													25												
														26											
															27										
																28									
																	29								
																		30							
																			31						
																				32					
																					33				
																						34			
																							35		
																								36	

PLACE MONUMENT SYMBOL (◆) AT PROPER LOCATION ON ABOVE INDEX

### EXAMPLE

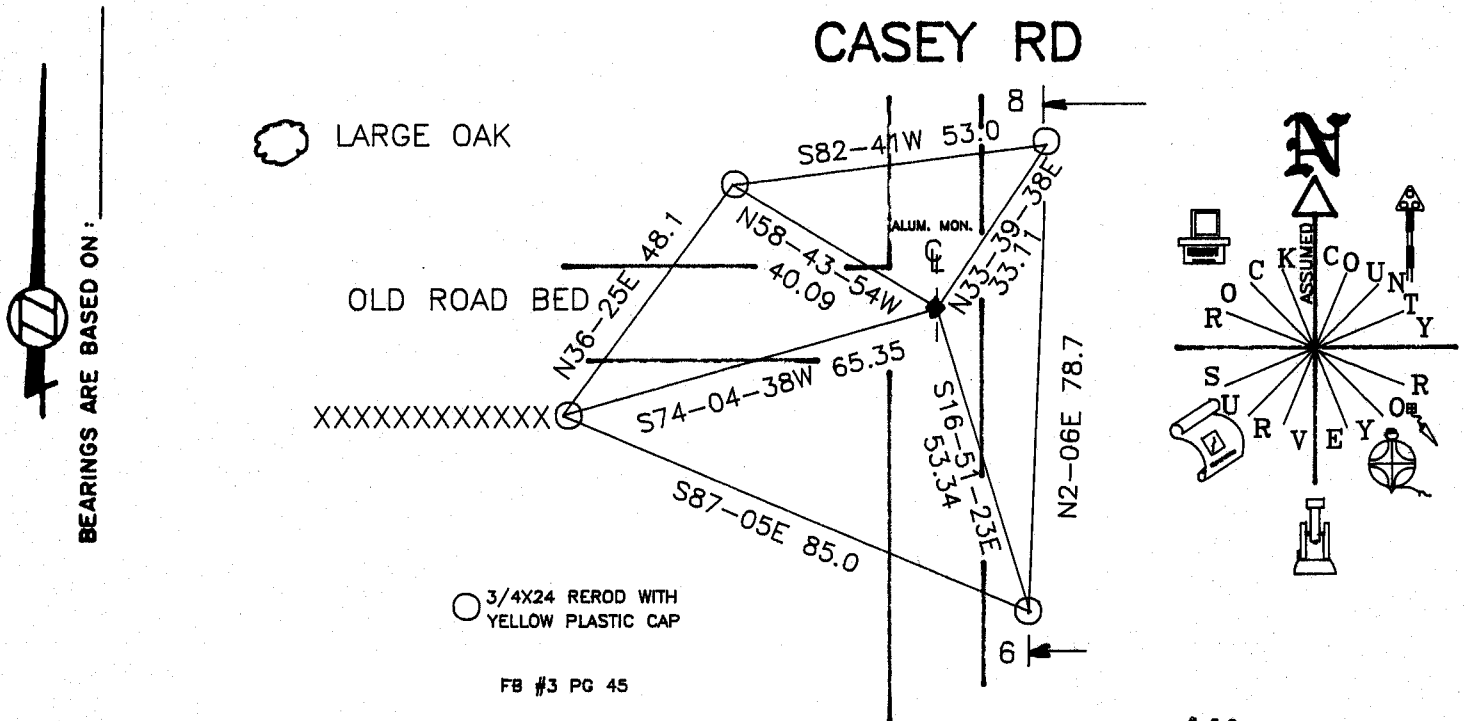


PORTER TWP  
ROCK COUNTY WI

### IF AVAILABLE STATE PLANE COORDINATES

North (Y) 323,428.08      Eleve. (Z) \_\_\_\_\_  
East (X) 148,101.27      Zone \_\_\_\_\_  
Hor. Datum COUNTY      Vert. Datum \_\_\_\_\_

(a)      ◆ CORNER MONUMENT      ○ WITNESS MONUMENT



FIELD BOOK \_\_\_\_\_ PAGE # \_\_\_\_\_

SHOW A PLAN VIEW DRAWING DEPICTING THE CORNER MONUMENT AND SURROUNDING PHYSICAL FEATURES, INCLUDING THE EXCAVATION AREA AND DEPTH. THE CORNER MONUMENT SHALL HAVE THE FOLLOWING CHARACTERISTICS: 1) HAVE AT LEAST TWO PREDETERMINED BREAK-OFF POINTS. 2) IF BROKEN, LEAVE A PERMANENTLY MAGNETIZED REMNANT AT THE ORIGINAL POINT. 3) MUST BE EXTENDABLE. 4) THE CAP IS INSCRIBED: ROCK COUNTY SURVEY MONUMENT - PENALTY FOR DISTURBING MARKER. 5) OR AN EXISTING CUT LIMESTONE. AN IRON PIPE 1 1/2" x 4'0" (MINIMUM) MAY BE USED IN AREAS WHERE GROUND WATER IS WITHIN ONE FOOT OF THE SURFACE. IF THE CORNER IS OCCUPIED BY AN IMPROVEMENT (MANHOLE, BURIED CABLE, ETC.) ANY DURABLE, DISTINCT MONUMENT MAY BE USED. CORNERS SHALL BE REFERENCED WITH AT LEAST 4 DURABLE WITNESS MONUMENTS. WITNESS MONUMENTS SHALL BE MADE OF CONCRETE, NATURAL STONE, IRON OR OTHER EQUALLY DURABLE MATERIAL, EXCEPT WOOD. DESCRIBE THE CORNER AND THE WITNESS MONUMENTS.

CORNER CODE :

E 13

MICROFILMED

(B) Describe any record evidence, monument evidence, occupational evidence, testimonial evidence or any other material evidence you considered, and whether the monument was found or placed.

- 1833 (NOV) HARRISON ORIGINAL SURVEY. BUR OAK 12 N50W 30.26'; BURR OAK 16 S60W 42.24'; BUR OAK 12 S35E 30.36'; BUR OAK 14 N55E 100.98'
- 1856 ROAD RECORDS. BOARD DIRECTED A ROAD TO BE MADE. BEGINNING AT THE N.W CORNER OF SECTION 3; THENCE SOUTH ON THE LINE BETWEEN SECTION & 9&10, 120 CHAINS TO THE 1/4 POST OF THE WEST LINE OF SECTION 10; THENCE EAST ON THE E&W 1/4 LINE OF SECTION 10, 20 CHAINS TO A POINT UNITING WITH A ROAD RUNNING N&S ON THE LINE DIVIDING THE E 1/2 FROM W 1/2 OF THE SW 1/4 OF SECTION 10 AND THE WHOLE LENGTH OF THE ROAD IS ONE AND 3/4 MILES AND THE ROAD IS 66' IN WIDTH.
- 1858 ROAD RECORDS PAGE 12. CALLS FOR 10560 FROM THE NE CORNER OF SECTION 21.
- 1858 ROAD RECORDS PAGE 12 BEGINNING AT A POINT ON THE NORTH LINE OF SECTION 9, AT THE INTERSECTIONS OF THE ABOVE NAMED ROAD WITH SAID LINE, THENCE EAST ON THE NORTH LINE OF SECTION 9, 1056' TO THE NE CORNER OF SECTION 9.
- 1967 BATTERMAN JR. VOL 4 PG 323 DUG LARGE HOLE AND FOUND NOTHING.

INSTALLED ALUMINUM MONUMENT.

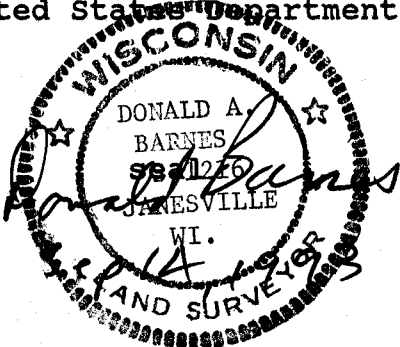
C) Was the corner restored through acceptance of (1) an obliterated evidence location, or, (2) a found perpetuated location.

SINCE BATTERMAN (1967) DUG A LARGE HOLE I DID NOT EXCAVATE FOR THE CORNER. I RESTORED THE CORNER THROUGH ACCEPTANCE OF OBLITERATED EVIDENCE LOCATION. THE ROAD RECORDS CALL FOR THE SECTION LINE AS THE CENTER OF THE R/W. I USED THE CENTER OF THE PAVEMENT TO CONTROL THE E/W LOCATION. THE 1958 AIR PHOTOS SHOW A ROAD GOING TO THE WEST. THE PRESENT E/W FENCE LINE AND LARGE OAK TREE TO THE NORTH INDICATES THAT THE ROAD WAS A 3 ROD ROAD. I USED THE CENTER OF THIS TO CONTROL THE N/S DIRECTION. THE DISTANCE TO THE E 1/4 CORNER OF SECTION 4 (2670.64) IS IN HARMONY WITH THE DISTANCES OF THE EAST LINE OF THE NE 1/4 OF SECTION 3 (2669.35), WEST LINE OF THE SW 1/4 OF SECTION 4 (2671.61) AND THE EAST LINE OF THE NW 1/4 OF SECTION 9 (2669.22).

D) Describe any material discrepancy between the location of the corner as restored or reestablished and the location of that corner as previously restored or reestablished by distance and direction. Show the discrepancy on the plan view drawing under (a), above. Show the distances between the corner as previously restored or reestablished and (1) the corner as restored or reestablished, and (2) to at least 4 of the witness monuments shown on the drawing in (a), above.

(E) Was the corner reestablished through lost corner proportionate methods? If so, show the method, including the directions and distances to other public land survey corners used as evidence or used for proportioning the corner location.

I, Donald Barnes, hereby certify that the corner points as identified by the corner code index were, in a field survey on, SEP 11 1993, established, re-established, monumented, re-monumented, recovered or restored as expressed below and in conformance with the regulations and rules as required in the current manual of survey instructions of the United States Department of Interior, Bureau of Land Management.



AFFIX YOUR LAND SURVEYOR SEAL

COUNTY SURVEYOR FILING DATA

Date of computer entry \_\_\_\_\_

Date microfilmed \_\_\_\_\_

Number of included sheets \_\_\_\_\_  
CORNER CODE

E 13