

U. S. PUBLIC LAND SURVEY MONUMENT RECORD

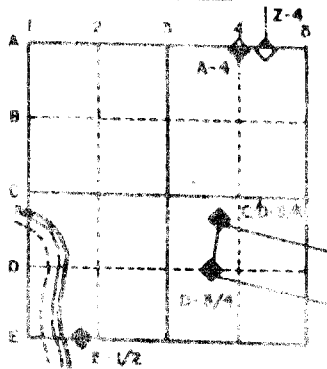
For Public Land Survey Corners in the
T. 4 N., R. 11 E.

CORNER CODE INDEX

	1	2	3	4	5	6	7	8	9	10	11	12	13	14	15	16	17	18	19	20	21	22	23	24	25	
A																										
B																										
C	6																									
D		5																								
E			4																							
F				3																						
G					2																					
H																										
I																										
J																										
K																										
L	18																									
M		17																								
N			16																							
O				15																						
P					14																					
Q						13																				
R							12																			
S								11																		
T									10																	
U										9																
V											8															
W												7														
X													6													
Y														5												
Z															4											

PLACE MONUMENT SYMBOL (◆) AT PROPER LOCATION ON ABOVE INDEX

EXAMPLE



PORTER TWP
ROCK COUNTY WI

IF AVAILABLE STATE PLANE COORDINATES

North (Y) 326,148.37 Eleve. (Z) _____
East (X) 448,057.95 Zone _____
Hor. Datum COUNTY Vert. Datum _____

(a.)

◆ CORNER MONUMENT

○ WITNESS MONUMENT

BEARINGS ARE BASED ON:

FIELD BOOK _____ PAGE # _____

MICROFILMED

SHOW A PLAN VIEW DRAWING DEPICTING THE CORNER MONUMENT AND SURROUNDING PHYSICAL FEATURES, INCLUDING THE EXCAVATION AREA AND DEPTH. THE CORNER MONUMENT SHALL HAVE THE FOLLOWING CHARACTERISTICS: 1) HAVE AT LEAST TWO PREDETERMINED BREAK-OFF POINTS. 2) IF BROKEN, LEAVE A PERMANENTLY MAGNETIZED REMNANT AT THE ORIGINAL POINT. 3) MUST BE EXTENDABLE. 4) THE CAP IS INSCRIBED: ROCK COUNTY SURVEY MONUMENT - PENALTY FOR DISTURBING MARKER. 5) OR AN EXISTING CUT LIMESTONE. AN IRON PIPE 1 1/2" x 4'0" (MINIMUM) MAY BE USED IN AREAS WHERE GROUND WATER IS WITHIN ONE FOOT OF THE SURFACE. IF THE CORNER IS OCCUPIED BY AN IMPROVEMENT (MANHOLE, BURIED CABLE, ETC.) ANY DURABLE, DISTINCT MONUMENT MAY BE USED. CORNERS SHALL BE REFERENCED WITH AT LEAST 4 DURABLE WITNESS MONUMENTS. WITNESS MONUMENTS SHALL BE MADE OF CONCRETE, NATURAL STONE, IRON OR OTHER EQUALLY DURABLE MATERIAL, EXCEPT WOOD. DESCRIBE THE CORNER AND THE WITNESS MONUMENTS.

CORNER CODE:

C13

(B) Describe any record evidence, monument evidence, occupational evidence, testimonial evidence or any other material evidence you considered, and whether the monument was found or placed.

- 1833 (NOV 3) HARRISON ORIGINAL SURVEY. BURR OAK 12 S74W 45.54'; BURR OAK 12 S45E 85.8'. CALLS FOR 2640 TO SW AND 2574' TO NW CORNERS OF SECTION 3. ALSO CALLS FOR 122' TO MARSH THAT IS NORTH.
- 1856 PAGE 66 OF ROAD RECORDS. BOARD DIRECTED ROAD TO BE MADE. BEGINNING AT THE N.W. CORNER OF SECTION 3; THENCE SOUTH ON THE LINE BETWEEN SECTION 3&9&10, 120 CHAINS TO THE 1/4 POST ON THE WEST LINE OF SECTION 10; THENCE EAST ON THE E&W 1/4 LINE OF SECTION 10, 20 CHAINS TO A POINT UNITING WITH A ROAD RUNNING N&S ON THE LINE DIVIDING THE 1 1/2 FROM 1 1/2 OF THE SW 1/4 OF SECTION 10 AND THE WHOLE LENGTH OF THE ROAD IS 66' WIDE.
- 187 MAP #3552 FOUND OLD STAKE AND ALSO THE STUMPS OF BOTH B.T. DROVE STAKE DEEP AND PUT ON TOP OF IT HH 22X14X12
- 1872 LEE VOL 2 PG 82 & MAP #3551 FOUND STUMP OF BTS AND OLD STAKE. USED TO SUBDIVIDE SECTION 3. CALLS FOR 2566.08' TO THE NW CORNER OF SECTION 3.
- 1874 RUGER VOL 2 PG 129 FOUND OLD STAKE & STUMP OF BOTH BTS DROVE STAKE DEEP & PUT ON TOP OF IT HH STONE 22X14X12. USED TO SUBDIVIDE SECTION 4. CALLS FOR 2597.79 TO CENTER OF SECTION 4.
- 1882 LEE MAP #6836 USED MONUMENT TO SUBDIVIDE SECTION 3. AT CENTER HE PLACED A DRY OAK STAKE AND SURROUNDED IT BY 4 HH.
- 1885 RUGER VOL 2 PG 292 REFERS TO EARLIER WORK. CALLS FOR 2686.20' TO CENTER OF SECTION 3.
- 1885 RUGER MAP #6837 USED CORNER TO SUBDIVIDE SECTION 3. CALLS FOR 2686.20' TO CENTER OF SECTION 3. PLACED NOTHING AT CENTER OF SECTION.
- 1991 BARNES VOL 6 PG DRAWING SHOWS RECORD DISTANCES.

DUG & FOUND NOTHING. PLACED ALUMINUM MONUMENT AND CARSONITE POST.

C) Was the corner restored through acceptance of (1) an obliterated evidence location, or, (2) a found perpetuated location?
CORNER RESTORED THROUGH ACCEPTANCE OF OBLITERATED EVIDENCE LOCATION. I

PLACED THE CORNER ON LINE WITH THE CENTER AND W 1/4 CORNER OF SECTION 4 AND THE N/S FENCE. THIS IS IN HARMONY WITH LEE'S 1872 DISTANCE TO THE NE CORNER OF SECTION 4 AND RUGER'S DISTANCE TO THE CENTER OF SECTION 4. IT IS ALSO IN HARMONY WITH THE SUM OF RUGER AND LEE'S DISTANCES ALONG THE E/W CENTER LINE OF SECTION 3 TO THE E 1/4 CORNER OF SECTION 3.

D) Describe any material discrepancy between the location of the corner as restored or reestablished and the location of that corner as previously restored or reestablished by distance and direction. Show the discrepancy on the plan view drawing under (a), above. Show the distances between the corner as previously restored or reestablished and (1) the corner as restored or reestablished, and (2) to at least 4 of the witness monuments shown on the drawing in (a), above.

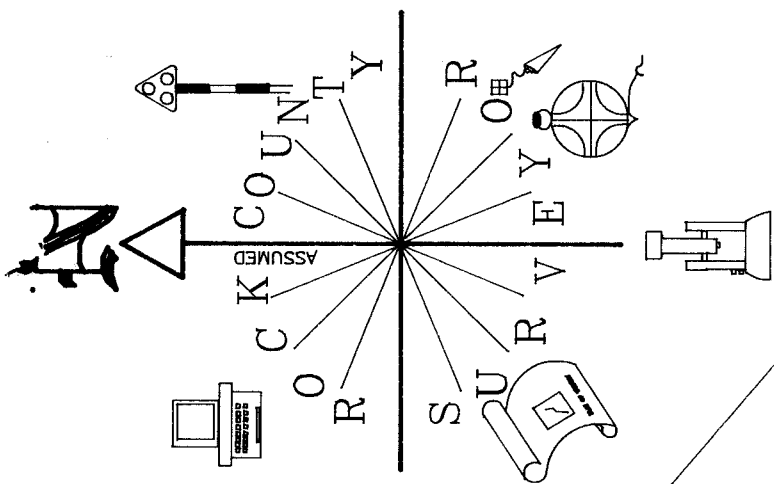
I, Donald Barnes, hereby certify that the corner points as identified by the corner code index were, in a field survey on, SEPTEMBER 10, 1993, established, re-established, monumented, re-monumented, recovered or restored as expressed below and in conformance with the regulations and rules as required in the current manual of survey instructions of the United States Department of Interior, Bureau of Land Management.

Donald Barnes
NOV 11 1993

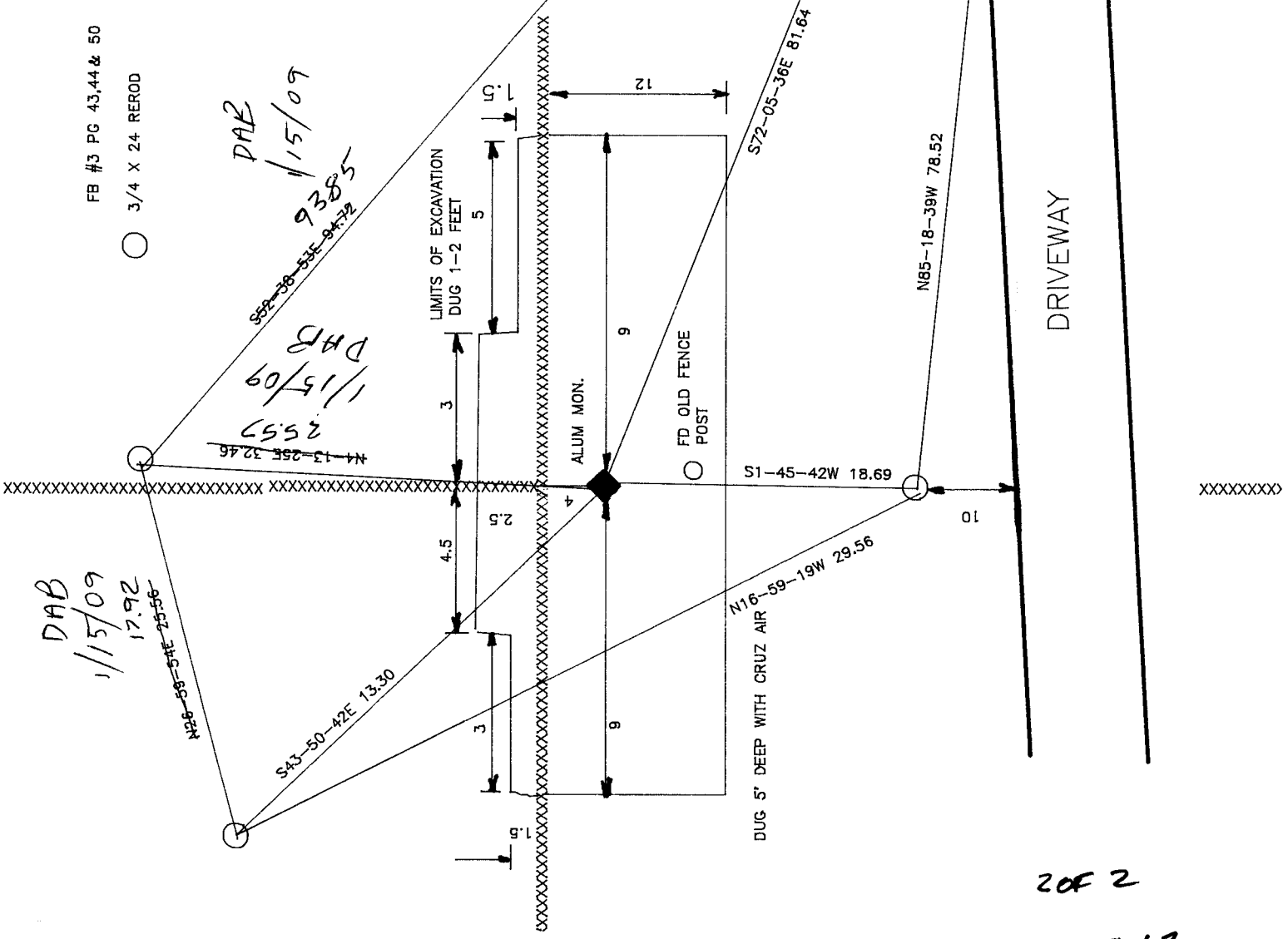
COUNTY SURVEYOR FILING DATA
 Date of computer entry _____
 Date microfilmed _____
 Number of included sheets 1
 CORNER CODE

AFFIX YOUR LAND SURVEYOR SEAL

Donald Barnes
 Nov 11, 1993



FB #3 PG 43,44 & 50
 3/4 X 24 REROD



DAB
 1/15/09
 17.92

DAB
 1/15/09
 25.57

DAB
 1/15/09
 93.85