

U.S. PUBLIC LAND SURVEY MONUMENT RECORD

For Public Land Survey Corners in:

WI ADMINISTRATIVE CODE A-E 7.08 REQUIREMENT

T. 4 N., R. 11 E

CORNER CODE INDEX

A	1	2	3	4	5	6	7	8	9	10	11	12	13	14	15	16	17	18	19	20	21	22	23	24	25
B																									
C	6					5					4				3						2				1
D																									
E																									
F																									
G	1					8					9				10						11				12
H																									
I																									
J																									
K																									
L	18																								
M																									
N																									
O																									
P																									
Q	19																								24
R																									
S																									
T	30																								
U																									
V																									
W																									
X	31																								
Y																									
Z																									

PORTER TWP
ROCK COUNTY WI

IF AVAILABLE
ROCK COUNTY COORDINATES PREFERRED

North _____ Elev. _____

East _____

Hor. Datum _____ Vert. Datum _____

LATITUDE _____ ELLIPS. HT. _____

LONGITUDE _____

GPS (X) _____ TRAVERSE (X) _____

BASED ON THE FOLLOWING CONTROL:

PLACE MONUMENT SYMBOL AT PROPER LOCATION ON ABOVE INDEX

CORNER MONUMENT WITNESS MONUMENT

(a) BEARINGS ARE BASED ON:

FIELD BOOK _____ PAGE # _____

SHEET 1 OF 3

SHOW A PLAN VIEW DRAWING DEPICTING THE CORNER MONUMENT AND SURROUNDING PHYSICAL FEATURES, INCLUDING THE EXCAVATION AREA AND DEPTH.

PLANNING & ZONING COMMITTEE ADOPTED THE ABOVE FORM ON 12/2/1982

CORNER CODE G-17

Po538

(B) Describe any record evidence, monument evidence, occupational evidence, testimonial evidence or any other material evidence you considered, and whether the monument was found or placed.

- 1833 HARRISON NORTH BETWEEN SECS 10 & 11
396 LEAVE PRAIRIE & ENTER TIMBER
2089.56 CATFISH CREEK CRS S.E. SET MEANDER POST BURR
OAK 10 S24W 30.36'; W.OAK 24 S9E 97.68'
2640 QUARTER SEC COR. RED OAK 10" N71E 19.14'; WHITE
OAK 10" N75W 27.06'
3828 CATFISH CRS S.W. SET MEANDER POST
4191 LEAVE CATFISH SET MEANDER POST
4806.78 A WESTERN BEND OF CATFISH. SET M.P.
4950 LEFT SAME SET M.P.
5280 INT. CATFISH SET COR TO SEC 2,3,10,11
{BUR OAK 18 N61W 285.12'; RED OAK 12 S40W 415.8'}
& M.P. LAND ? 2ND RATE AS BEFORE
- 1885 RUGER VOL 2 PG 292 FOUND REMAINS OF BOTH B.T. STUMPS-SET
LIMESTONE 18X6X3 ON S. SIDE OF FENCE POST. BLAZED 2 WHITE
OAK TREES ON E. SIDE OF FENCE. RED OAK 10 N71E 19.14';
WHITE OAK 10 N75W 27.06'. 2654.52' TO SE COR SEC 10.
- 1886 RUGER VOL 2 PG 282 STATES NOTHING ABOUT MONUMENT.
USED MONUMENT TO SUBDIVIDE SECTION 11. 2692.47 TO CENTER
OF SEC 11 & 5436.42' (VAR 6-30) TO E ¼ COR SEC 11.
- 1971 LEE VOL 4 PG 534 AT W ¼ COR SEC 11 FD L.S. 13X6X3 N. SIDE
OF FENCE POST WITH W.O. TREE ON E. SIDE. SET CONC. MON.
WITH BRASS CAP IN PLACE. 478.4 TO SOUTH R/W OF STH 59,
610.7 (SOUTH) TO CUT + IN CONC. BASE OF FENCE POST ON LINE
SOUTH BY R.L.T. ASSOC. {NORTH SIDE OF YAHARA RIVER}. 2654
TO SW COR SEC 11.

FOUND CONC. MON WITH BRASS DISK & CARBONSITE POST. TOP OF
DISK IS 3" ABOVE GROUND & 0.5' WEST OF N/S FENCE.

C) Was the corner restored through acceptance of (1) an obliterated evidence location, or, (2) a found perpetuated location?

ACCEPTED FOUND PERPETUATED LOCATION.

D) Describe any material discrepancy between the location of the corner as restored or reestablished and the location of that corner as previously restored or reestablished by distance and direction. Show the discrepancy on the plan view drawing under (a), above. Show the distances between the corner as previously restored or reestablished and (1) the corner as restored or reestablished, and (2) to at least 4 of the witness monuments shown on the drawing in (a), above.

NA

(E) Was the corner reestablished through lost corner proportionate methods? If so, show the method, including the directions and distances to other public land survey corners used as evidence or used for proportioning the corner location.

NO

I, Donald Barnes, hereby certify that the corner location as identified by the corner code index was determined by me under my direction and control and that this U.S. Public Land Survey Monument Record is correct and complete to the best of my knowledge and belief.

Seal

Donald Barnes

Emboss

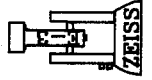
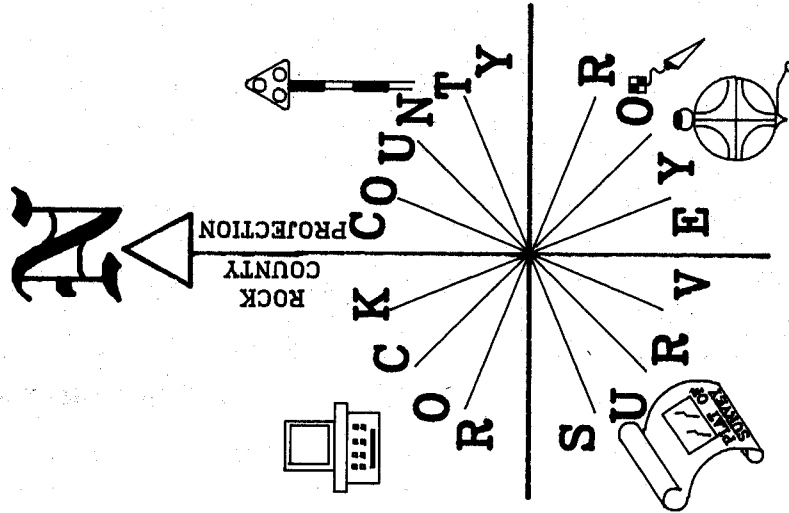
June 6, 2001

NUMBER OF INCLUDED SHEETS 2

CORNER CODE

G-17

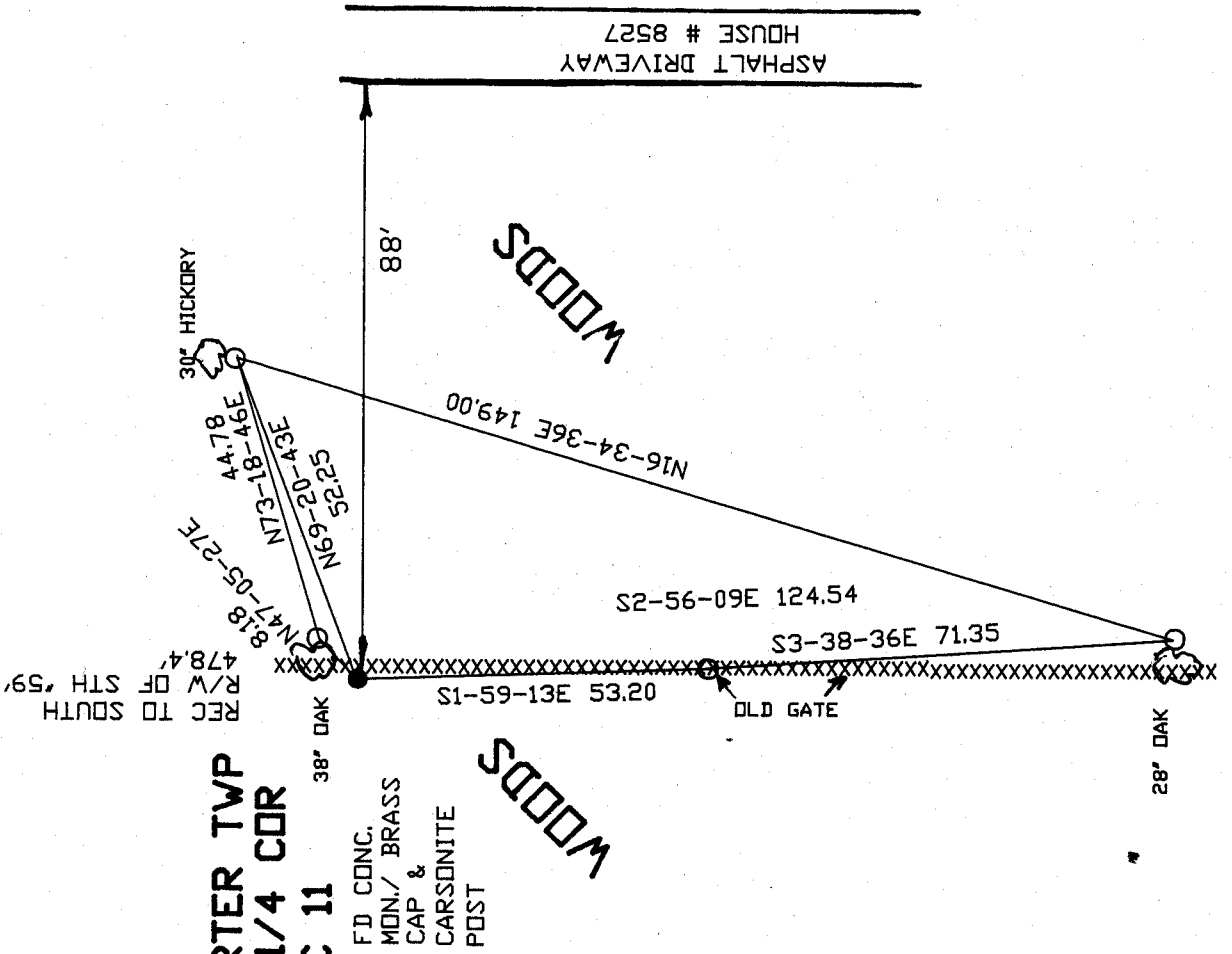
7.08 REQUIREMENT



- 3/4X24" REROD / PLASTIC CAP
- FD. CONC. MON. / DISK & CARSONITE POST

OBSERVATION SHEET #30

WOODS



PORTER TWP
W 1/4 COR
SEC 11

FD CONC.
MON./ BRASS
CAP &
CARSONITE
POST

EMBOSSSED
Donald Barnes
June 6, 2001

G-17

David J. Barnes
6/14/01



CENTER?

326,134.04 N/S
456,027.94 E/W

FD LARGE NAIL
0.2' DEEP
@ CENTER OF PVMT
& ON LINE N/S
FENCE
DID NOT ACCEPT NOR
REJECT AS CENTER OF
SEC 2

SEC 2
SEC 2

NW COR

N 1/4 COR

NO-18-19W 2617.12
323516.96 N/S
456041.89 E/W N89-27-18E 2708.63 323,542.73 N/S
PRO 2709.46 458,750.40 E/W
1886 RUGER VAR 6-34 2707.32
1833 HARRISON 2669.70

NE COR

PRO IS THE VALUE COMPUTED FROM THE FOLLOWING RECORD & MEASURED DISTANCES.

RUGER	MEASURED
5436.42	5441.06
2722.50	2725.72
2722.50	2723.47
2753.52	2755.88
2578.83	2580.69
2707.32	2708.63
2628.78	2631.43
TOTAL	21,549.87

FD L.S.
SET POLY. MON.
& CARSONITE

COUNTY COORDINATES

N88-23-37E	5441.06
1886 RUGER	5436.42
N88-23-26E	2746.14
PRO	2746.12
1886 RUGER	2743.95

FD ALUM.
1833 HARRISON 2640
RUGER VAR 6-30 2578.83
N1-21-35W 2580.69
PRO 2580.86
1886 320,962.77 N/S
458,811.64 E/W

FD CONC. MON.
W 1/4 COR

320,810.23 N/S
453,372.71 E/W

N88-23-47E 2694.93
PRO 2694.60
1886 RUGER 2692.47
1886 RUGER VAR 6-35

320885.64 N/S
456066.58 E/W
CENTER

FD TIES
E 1/4 COR

SW COR

318,153.06
453,369.96
USED 1991 OBSERVATIONS (FD R/R)

1833 HARRISON 2692.80
1886 RUGER VAR 5-847 2722.50
1991 BARNES N89-33-35E 2725.70
N89-26-25E 2725.72
PRO 2724.65

1833 HARRISON 2640
1886 RUGER VAR 5-847 2722.50
1991 BARNES N89-32-55E 2723.42
N89-25-39E 2723.47
PRO 2724.65

SE COR

FD PIPE
318,206.90 N/S
458,818.88 E/W

S 1/4 COR

PORTER TWP
T4N R11E