

Paper weight-110# (minimum)

Black nonfading ink required

# U.S. PUBLIC LAND SURVEY MONUMENT RECORD

For Public Land Survey Corners In:  
T. 4 N. R. 11 E. 4th P.M.  
CORNER CODE INDEX

WI ADMINISTRATIVE CODE A-E 7.08 REQUIREMENT  
REV 10/23/2004 USMONREC.DWG

**PORTER** TWP  
**ROCK COUNTY WI**

IF AVAILABLE  
ROCK COUNTY COORDINATES PREFERRED

A	1	2	3	4	5	6	7	8	9	10	11	12	13	14	15	16	17	18	19	20	21	22	23	24	25	A
B		6					5				4				3			2			1					B
C																										C
D																										D
E																										E
F																										F
G																										G
H																										H
J																										J
K																										K
L																										L
M																										M
N																										N
O																										O
P																										P
Q																										Q
R																										R
S																										S
T																										T
U																										U
V																										V
W																										W
X																										X
Y																										Y
Z																										Z

North \_\_\_\_\_ Elev. \_\_\_\_\_

East \_\_\_\_\_

Hor. Datum \_\_\_\_\_ Vert. Datum \_\_\_\_\_

LATITUDE \_\_\_\_\_ ELLIPS. HT. \_\_\_\_\_

LONGITUDE \_\_\_\_\_

NAD83(91) \_\_\_\_\_ NETWORK ADJ. YR \_\_\_\_\_

GPS (X) \_\_\_\_\_ TRAVERSE (X) \_\_\_\_\_

BASED ON THE FOLLOWING CONTROL:

PLACE MONUMENT SYMBOL  AT PROPER LOCATION ON ABOVE INDEX

CORNER MONUMENT

WITNESS MONUMENT

BEARINGS ARE BASED ON: -----

FIELD BOOK \_\_\_\_\_ PAGE # \_\_\_\_\_

SHEET 1 OF 3

SHOW A PLAN VIEW DRAWING DEPICTING THE CORNER MONUMENT AND SURROUNDING PHYSICAL FEATURES, INCLUDING THE EXCAVATION AREA AND DEPTH.

PLANNING & ZONING COMMITTEE ADOPTED THIS FORM ON 12/2/1982

CORNER CODE V-12

PO609

NECORSEC34

(B) Describe any record evidence, monument evidence, occupational evidence, testimonial evidence or any other material evidence you considered, and whether the monument was found or placed.

1833 HARRISON (NOV) T4N R11E 4<sup>TH</sup> MER. NORTH  
BET. 34 & 35

2640.0 SET POST FOR COR TO QUARTER SEC  
{BURR OAK 18 N85W 34.98'; RED OAK 10  
S80E 62.70' {RED OAK 10; BURR OAK  
18} MARKED

4339.50 RED OAK 10 IN DIAM.

4639.14 TRAIL CRS N.E.

5280.0 SET POST FOR COR TO SECS 26,27,34,35  
BURR OAK 8 N60E 34.98'; BURR OAK 12  
N21W 29.70'; RED OAK 10 S65E 27.72';  
BURR OAK 12 S30E 42.24'  
LAND GENTLY ROLLING 2<sup>ND</sup> RATE TIMBER  
MOSTLY BURR OAK SOME RED OAK- ????  
??? GRASS & WEEDS

1833 HARRISON (NOV) T4N R11E 4<sup>TH</sup> MER. NORTH BETWEEN  
SEC 26 & 27

2640.0 SET POST FOR COR TO QUARTER SEC {BURR  
OAK 18 N65E 53.0'; BURR OAK 18 N74W  
35.0' BURR OAK 18; BURR OAK  
18} MARKED

4008.0 BURR OAK 18 IN DIAM

5280.0 SET POST FOR COR TO SECS 22,23,26,27  
{BURR OAK 18 S34W 18.0'; BURR OAK 20  
S56E 96.0' {BURR OAK 18 N51W 18.0';  
BURR OAK 18 N25E 34.0' LAND ROLLING  
2<sup>ND</sup> RATE TIMBER ?? BURR OAK ??? GRASS  
& WEEDS

1833 HARRISON (NOV) T4N R11E 4<sup>TH</sup> MER. EAST ON RANDOM  
BET 26 & 35

247.50 TRAIL CRS N.E.

2640.0 TEMPY 1/4 SEC COR.

3977.16 ENTER PRAIRIE

4228.62 TRAIL NORTH

5309.70 INT. EAST BDY 9.9' SOUTH OF POST LAND  
ROLLING 2<sup>ND</sup> RATE TIMBER ALL BURR OAK ?  
GRASS & WEEDS

WEST COR WEST BET 26 & 35

1702.14 BURR OAK 12

2654.85 QUARTER SEC COR BURR OAK 12 S70E  
25.74'; BURR OAK 15 S41W 27.06' BURR  
OAK 12; BURR OAK 15} MARKED

3593.70 BURR OAK 8

5309.70 SEC COR

1833 HARRISON (NOV) T4N R11E 4<sup>TH</sup> MER. EAST ON RANDOM  
BET 27 & 34

1337.16 TO SMALL POND  
OFFSET - NORTH 528.0' EAST 990.0'  
{528.0' OUTLET?? 66'N SOUTH 528.0' TO  
LINE

2327.16 TRUE LINE CENT? & LEAVE POND

2640.0 TEMPY 1/4 SEC COR

5293.20 INT. EAST BDY 5.28' SOUTH OF POST  
LAND ? SAME AS BEFORE

WEST COR. WEST

1518.66 WHITE OAK 24

2640.0 QUARTER SEC COR. {BURR OAK 12 S49W  
9.9'; BURR OAK 12 N35E 17.82' {BURR  
OAK 12; BURR OAK 10} MARKED

2646.60 PENCELED IN LIGHTLY UNDER 2640.00 ON  
THE PAPER COPY & ON THE STATE WEB SITE

*Donald Barnes*  
3-18-2009

PO609

NECORSEC34

5293.20 SEC COR

- 1855 STEBBINS PORTER TWP RD REC BK 1 PG 7 BEGINNING AT THE 1/4 POST ON THE SEC LINE BETWEEN SECTIONS 22 AND 23; THENCE SOUTH ON THE SEC LINE 8,712' TO A POINT ON THE CENTER OF THE HIGHWAY RUNNING EASTERLY AND WESTERLY THROUGH SEC 34 & 35, SAID POINT BEING 792' SOUTH OF THE SW COR OF SEC 26, T4NR11E. THE LENGTH OF SAID ROAD IS 8712'; SAID ROAD IS 66 WIDE. COURSES GIVEN ACCORDING TO THE TRUE MERIDIAN. VARIATION OF NEEDLE 7-3/4. H. STEBBINS-SURVEYOR
- 1971 LEE VOL 4 PG 502 FD HH 15XBX11 WITH HH ON N & S AND LS ON WEST. REFERENCED SAME.
- 1980 COMBS CSM VOL 10 PG 155 ALUM. MON.
- 1980 COMBS #3669 FD PIPE S0-44E ALONG N/S 1/4 LINE SEC 35, S8-48-50W TO ALUM. MON @ NW COR SEC 35.
- 1981 BARNES VOL 6 PG 166 4' DEEP FD LIMESTONE & HARDHEAD. SET ALUM. FD NE REF PIPE.
- 1982 BARNES VOL 6 PG 279 FD ALUM NO-20-19W 2660.80 TO FD ALUM @ E 1/4 COR SEC 27, N89-49-48W 2662.98 TO S 1/4 COR SEC 27.
- 1983 BARNES #6841 S89-55-38E TO N1/4 COR SEC 34
- 1990 WOODMAN CSM VOL 14 PG 498 FD ALUM. N88-48-50E TO FD 1 1/4 PIN @ N 1/4 COR SEC 35.

FD ALUM. MON 0.4' BELOW PVMT SURFACE. I ALSO USED MY 1982 OBSERVATIONS TO THE ALUM.

C) Was the corner restored through acceptance of (1) an obliterated evidence location, or, (2) a found perpetuated location?

ACCEPTED FD ALUM.

D) Describe any material discrepancy between the location of the corner as restored or reestablished and the location of that corner as previously restored or reestablished by distance and direction. Show the discrepancy on the plan view drawing under (a), above. Show the distances between the corner as previously restored or reestablished and (1) the corner as restored or reestablished, and (2) to at least 4 of the witness monuments shown on the drawing in (a), above.

NONE

(E) Was the corner reestablished through lost corner proportionate methods? If so, show the method, including the directions and distances to other public land survey corners used as evidence or used for proportioning the corner location.

NO

I, **Donald Barnes**, hereby certify that the corner location as identified by the corner code index was determined by me under my direction and control and that this U.S. Public Land Survey Monument Record is correct and complete to the best of my knowledge and belief.

Seal  
Donald  
Embress

Barnes

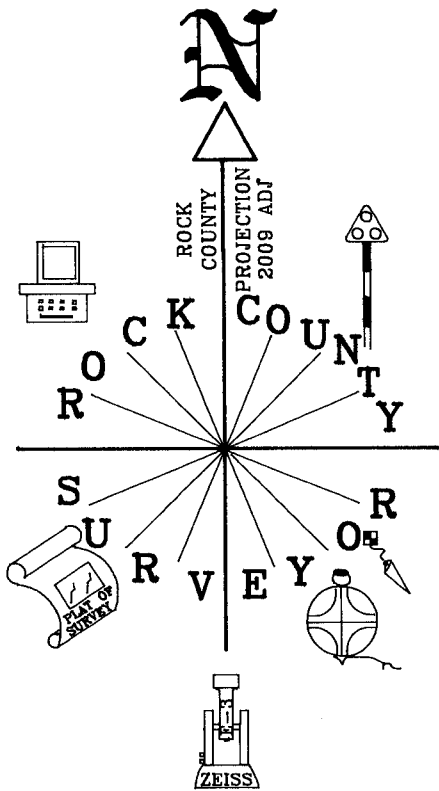
3-18-2009

SHEET 2 OF 3

CORNER CODE

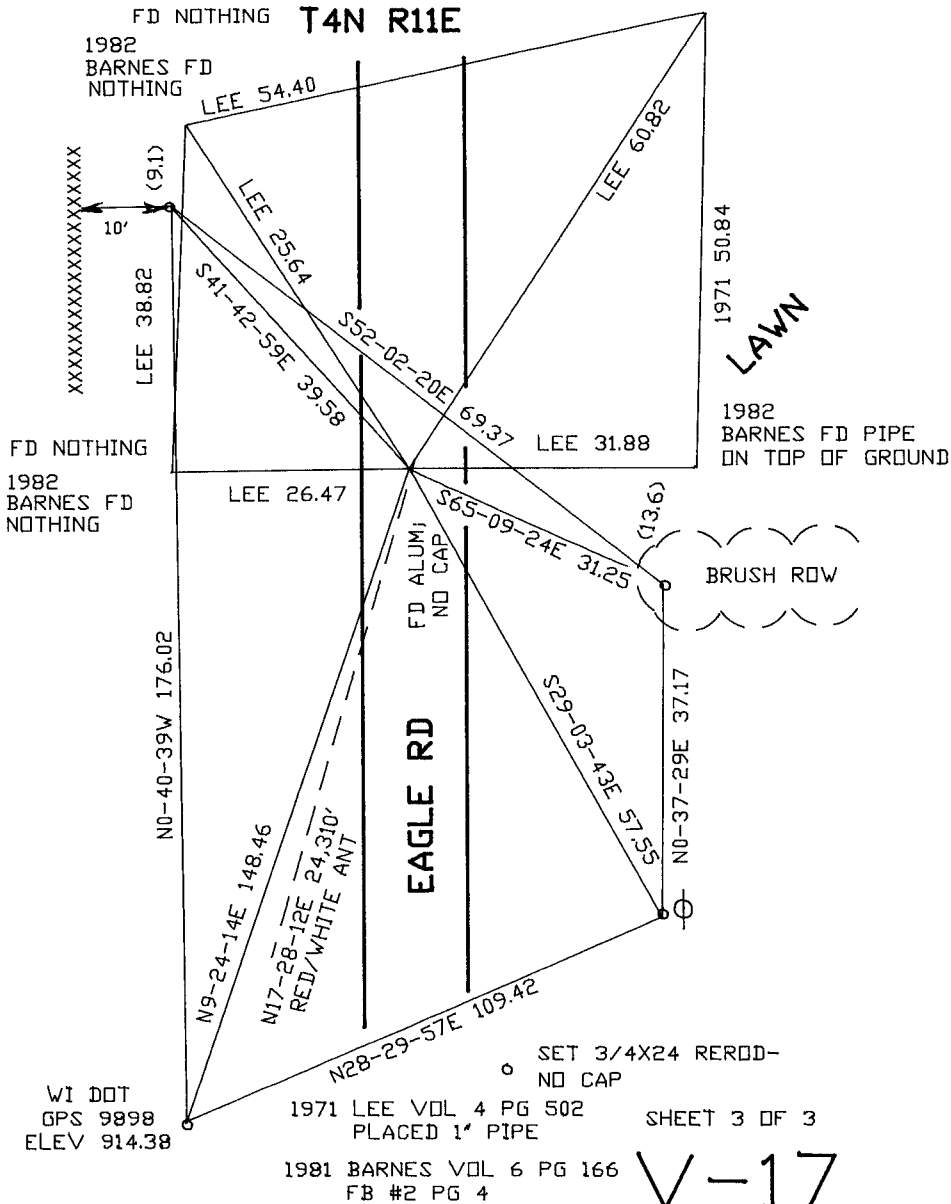
**V-17**

A.E. 7.08 REQUIREMENT



NOT TO SCALE

NE COR 1982 BARNES FD IRON PIPE  
 SEC 34 BENT BY UNERGROUND CABLE  
 PORTER TWP FD NOTHING  
 T4N R11E



V-17

*David Barnes*  
 3-18-2009