

Paper weight-110# (minimum)

Black nonfading ink required

U.S. PUBLIC LAND SURVEY MONUMENT RECORD

For Public Land Survey Corners In:

WI ADMINISTRATIVE CODE A-E 7.08 REQUIREMENT

T. 4 N. R. 11 E. 4th P.M.

REV 10/23/2004 USMONREC.DWG

CORNER CODE INDEX

PORTER TWP

ROCK COUNTY WI

IF AVAILABLE

ROCK COUNTY COORDINATES PREFERRED

1	2	3	4	5	6	7	8	9	10	11	12	13	14	15	16	17	18	19	20	21	22	23	24	25	
A																									A
B																									B
C	6																								C
D																									D
E																									E
F																									F
G	7																								G
H																									H
I																									I
J																									J
K	18																								K
L																									L
M																									M
N																									N
O																									O
P	19																								P
Q																									Q
R																									R
S																									S
T	30																								T
U																									U
V																									V
W	31																								W
X																									X
Y																									Y
Z																									Z

North _____ Elev. _____

East _____

Hor. Datum _____ Vert. Datum _____

LATITUDE _____ ELLIPS. HT. _____

LONGITUDE _____

NAD83(91) _____ NETWORK ADJ. YR _____

GPS (X) _____ TRAVERSE (X) _____

BASED ON THE FOLLOWING CONTROL:

PLACE MONUMENT SYMBOL AT PROPER LOCATION ON ABOVE INDEX

CORNER MONUMENT

WITNESS MONUMENT

BEARINGS ARE BASED ON: _____

FIELD BOOK _____ PAGE # _____

SHEET 1 OF 4

SHOW A PLAN VIEW DRAWING DEPICTING THE CORNER MONUMENT AND SURROUNDING PHYSICAL FEATURES, INCLUDING THE EXCAVATION AREA AND DEPTH.

PLANNING & ZONING COMMITTEE ADOPTED THIS FORM ON 12/2/1982

CORNER CODE V-1

PO601 NWCORSEC31

(B) Describe any record evidence, monument evidence, occupational evidence, testimonial evidence or any other material evidence you considered, and whether the monument was found or placed.

1833 SEP 13 BRINK & MULLETT T4N R10E VAR 8-15 NORTH ON EAST SIDE OF SECTION 36

2640.0 SET QUARTER SECTION POST WHITE OAK 16 S75W 267.96'; BUR OAK 6 N 1 1/2 W 339.24'

2904.0 LEAVE MARSH AND ENTER TIMBER

3432.0 LEAVE TIMBER AND ENTER MARSH

4785.0 LEAVE MARSH AND ENTER TIMBER

5280.0 SET POST CORNER SEC 25 & 36 BUR OAK 14 S47W 49.50'; BUR OAK 14 N66W 45.54' LAND ROLLING SECOND RATE EXCEPT MARSH TIMBER BUR WHITE AND BLACK OAK.

1833 (SEP13) BRINK & MULLETT T4N R10E VAR 8-15 NORTH ON EAST SIDE OF SECTION 25

2147.64 BUR OAK 12 IN DIAMETER

2640.0 SET QUARTER SECTION POST BUR OAK 14 S69W 120.78'; BLACK OAK 6 N9W 67.32'

4762.56 BUR OAK 10 IN DIAMETER

5280.0 SET POST CORNER SECTIONS 24 & 25 BUR OAK 12 S28W 64.68'; BUR OAK 16N62W 9.24' LAND ROLLING SECOND RATE WHITE BLACK AND BUR OAK

1833 ORIG GOV PLAT NW COR SEC 31 PORTER TWP IS 16.50' NORTH OF NE COR SEC 36 UNION TWP

1833 (NOV 5) HARRISON T4N R11E 4TH MER. WEST BET. SECS 30 & 31

2640.00 SET POST FOR COR TO 1/4 SEC {W.O. 12 S40W 52.8'; BURR OAK 18 S41W 50.16' {BURR OAK 18; WHITE OAK 12} MARKED

5214.0 INT. WEST BDY 16.5' N OF POST {BURR OAK 24 S54E 52.80'; BURR OAK 18 N70E 19.8' LAND ROLLING 2ND RATE HANDSOMELY TIMBERED WITH RED & BURR OAK.

1833 NOV 5 HARRISON EAST ON A RAND. BET 25 & 36 T4N R10E

2640.0 LEAVE PRAIRIE & SET TEMPY 1/4 COR POST

5204.10 INT. EAST BNDY 49.5' NORTH OF POST 1ST 1/2 LEVEL 1ST RATE PRAIRIE 2ND 1/2 LEVEL 1ST RATE WOOD LAND WITH BURR OAK TIMBER NO UNDERGROWTH

WEST COR. WEST

2602.05 QUARTER SEC COR {BURR OAK 18 S41E 66.0'; BUR OAK 12 N4E 63.36'} {BURR OAK 18; BURR OAK 12} MARKED

5204.10 SEC COR

1867 LOCKE VOL 1 PG 301 & #5277 @ NE COR SEC 36 UNION TWP FD OLD STAKE & REMAINS OF BTS SET STAKE SURROUNDED BY 2 LARGE & 1 SMALL HARD HEADS (SMALL ON E) IN MOUND. 16.5' SOUTH OF NW COR SEC 31. STATES NOTHING ABOUT NW COR SEC 31.

1870 RUGER (SEP) REMONUMENTATION PG 67 SOUTH ON EAST LINE OF NE 1/4 SEC 25 ON A VAR 7-43 AT

2645.28 INTERSECTED QUARTER LINE 8.58' EAST OF QUARTER CORNER. FOUND OLD STAKE AT CORNER. ALSO FOUND NORTH BEARING TREE. COR. VAR 7-32

SOUTH ON EAST LINE OF SE 1/4 SEC 25 ON A VAR 7-35 OFFSET EAST 7.26' AT

2655.51 INTERSECTED SOUTH BOUNDARY LINE 31.68' EAST OF CORNER COR. VAR 7-03'

Daniel Barnes
6-11-09

SHEET 1 OF 4
CORNER CODE V-1

PO601 NWCORSEC31

1870 RUGER (AUG 16) REMONUMENTATION PG 59 COMMENCING AT THE NE COR SEC 36 T4N R10E. FD STAKE SURROUNDED BY 4 HARD HEAD STONES SET BY LOCKE ALSO FD REMAINS OF BOTH STUMPS OF BEARING TREES STAKE SET BY LOCKE CORRECT.

WEST ON NORTH LINE OF NE 1/4 OF SEC 36 ON A VAR 6-15 OFFSET 21.94' AT

2619.54 FELL 3.30' SOUTH OF QUARTER CORNER ESTABLISHED BY LOCKE. HIS RECORD OF SAID SURVEY IN COUNTY SURVEYORS' RECORD BOOK SHOWS THAT HE ESTABLISHED SAID QUARTER COR. AT A POINT IN A TRUE LINE BETWEEN AND EQUI-DISTANT FROM THE NE AND NW CORNERS OF SAID SECTIONS. THE QUARTER COR. ESTABLISHED UNITED STATES SURVEYOR HAVING BEEN DESTROYED. I SEARCHED FOR THE QUARTER COR. AS ESTABLISHED IN THE UNITED STATES SURVEY, BUT COULD FIND NO TRACE OF IT OR OF THE BEARING TREES, AND I WAS INFORMED BY CREDIBLE PARTIES CONVERSANT WITH THE FACTS, THAT THE ORIGINAL QUARTER CORNER HAD BY MISTAKE BEEN LOCATED CONSIDERABLY TOO FAR TO THE EAST AND THAT IT AND THE BEARING TREES HAD BEEN PURPOSELY REMOVED AND ALL TRACES OF THEM DESTROYED SEVERAL YEARS BEFORE. CONTINUED WEST ON NORTH LINE OF N.W. 1/4 OF SECTION 36 ON A VAR 6-39' OFFSET SOUTH 12.54' AT

5239.08 INTERSECTED WEST BOUNDARY LINE 12.54' SOUTH OF COR. FOUND OLD STAKE AND STUMPS OF N.W. BEARING TREE AND REMAINS OF STUMP OF SW BEARING TREE. ESTABLISHED THE NORTH QUARTER CORNER OF SECTION 36 IN A TRUE LINE BETWEEN AND AT A POINT EQUI-DISTANT FROM THE NE & NW CORNERS OF SAID SECTION. IT BEING DISTANT FROM EACH 2619.54' AND IN THE SAME PLACE AS ESTABLISHED BY LOCKE. CORRECTED VARIATION ON NORTH LINE OF SECTION 36 6-39'

1870 RUGER (SEP) REMONUMENTATION T4N R10E PG 61

NORTH ON EAST LINE OF SE 1/4 SEC 36 ON A VAR 7-21' OFFSET WEST 5.28' AT

2652.54 INTERSECTED QUARTER LINE 0.66' WEST OF QUARTER CORNER FOUND STAKE SURROUNDED BY HARD HEAD STONES SET BY LOCKE AT CORNER. ALSO FOUND REMAINS OF STUMPS OF BEARING TREES. COR VAR 7-28'

NORTH ON EAST LINE OF NE 1/4 SEC 36 ON A VAR 7-12' OFFSET EAST 8.58' AT

2651.88 INTERSECTED NORTH BOUNDARY LINE 7.92' EAST OF CORNER. COR VAR 7-11

1874 RUGER VOL 2 PG 165 STATES NOTHING ABOUT MON. CALLS FOR IT 16.50' NORTH OF NE COR SEC 36, 2660.79 TO W 1/4 COR SEC 31. W 1/4 COR SEC 31 IS ON LINE & MIDWAY BETWEEN NW & SW CORNERS OF SEC 31. CALLS FOR STONE MON @ NE COR SEC 36.

1874 RUGER VOL 2 PG 179 STATES NOTHING ABOUT MON. CALLS FOR IT AS 16.50' NORTH OF STONE MON. @ NE COR SEC 36,

SHEET 2 OF 4
CORNER CODE V-1

611-09
Donald Barnes

PO601 NWCORSEC31
 2665.74 TO W 1/4 COR SEC 30. W 1/4 COR SEC 30 IS
 MIDWAY & ON LINE WITH NW & SW CORNERS OF SEC 30.
 1980 BARNES VOL 6 PG 27 SHOWS NE COR SEC 36 AS SOUTH OF
 NW COR SEC 31. FD LS @ NE COR SEC 36 UNION TWP WITH
 COORDIANTES OF 282,634.5X: 2,201,402.3X. SHOWS REC
 DISTANCES
 1980 BARNES VOL 6 PG 43 FD CUT LIMESTONE 0.3 ABOVE
 GROUND PLACED 2 1/4X24" IRON PIPE HORIZONTALLY ON
 NORTH SIDE. 80 +/- SOUTH OF CENTER OF STH 14 PVMT.
 REFERENCED SAME. 46' SOUTH OF FENCE ON SOUTH R/W
 1994 BARNES VOL 6 PG 440 SHOWS REC DISTANCES. NW COR
 AS NORTH OF NE COR SEC 36.
 2000 COMBS CSM VOL 23 PG 392 CUT STONE NB9-12-15E
 2590.98 TO ALUM @ N 1/4 COR SEC 31
 2001 COMBS CSM VOL 25 PG 161 FD CUT STONE NB9-12-15E
 2590.98 TO ALUM @ N 1/4 COR SEC 31.
 2005 COMBS PLAT BK 32 PG 698 "GLACIER VALLEY ESTATES
 SECOND ADDITION" FD 6X6 SQUARE STONE @ SE & S 1/4
 COR SEC 25 UNION TWP, T4N R10E. SB9-13-41W 2618.39
 FROM SE TO S 1/4 COR.
 2001 COMBS #M14291 FD CUT STONE MON. NB9-12-15E 2590.98
 TO ALUM MON @ N 1/4 COR SEC 31. [PROBABLY DID NOT
 ACTUALLY FIND OR USE THE NW COR SEC 31 AS STATED.
 THERE IS A JOG]

FD CUT LIMESTONE @ NE COR SEC 36 UNION TWP. @ NW COR SEC
 31 FD FLAT STONE 0.35' THICK X 12.0' WIDE X 1.4' LONG WITH HH
 ON N & S UNDER N/S FENCE. DID NOT REPLACE STONE.

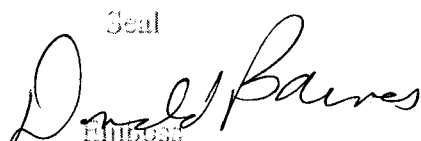
C) Was the corner restored through acceptance of (1) an obliterated evidence location, or, (2) a found
 perpetuated location?

ACCEPTED FD CUT LIMESTONE & FLAT STONE.

D) Describe any material discrepancy between the location of the corner as restored or reestablished
 and the location of that corner as previously restored or reestablished by distance and direction. Show
 the discrepancy on the plan view drawing under (a), above. Show the distances between the corner as
 previously restored or reestablished and (1) the corner as restored or reestablished, and (2) to at least 4
 of the witness monuments shown on the drawing in (a), above.

(E) Was the corner reestablished through lost corner proportionate methods? If so, show the method,
 including the directions and distances to other public land survey corners used as evidence or used for
 proportioning the corner location.

I, **Donald Barnes**, hereby certify that the corner location as identified by the corner code index
 was determined by me under my direction and control and that this U.S. Public Land Survey
 Monument Record is correct and complete to the best of my knowledge and belief.

Seal

 6-11-09

SHEET 3 OF 4

CORNER CODE **V-1**

A.E. 7.08 REQUIREMENT

N72-19-06W 9,797'
EVANSVILLE NEW TANK

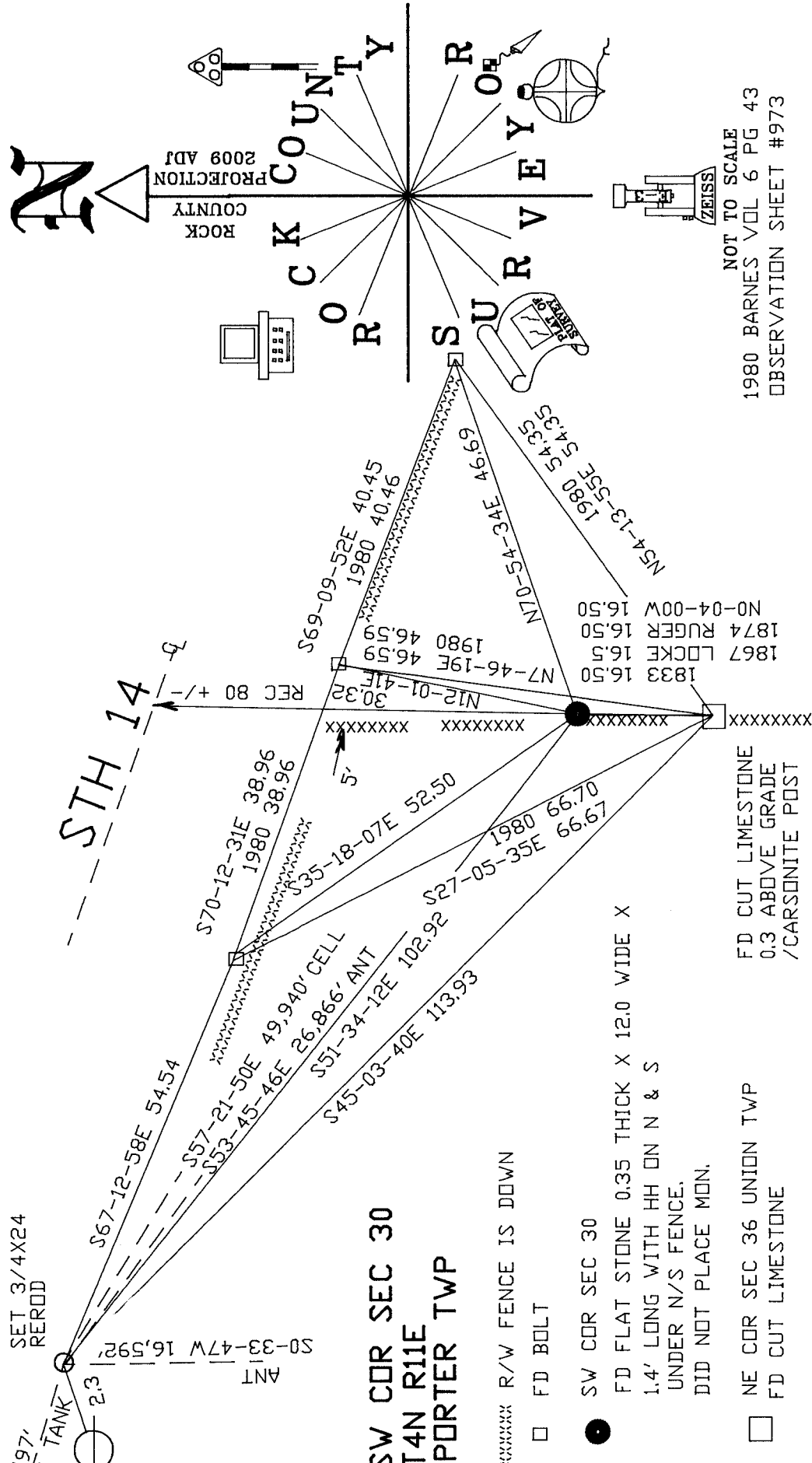
Donald Barnes
EMBOSSSED SEAL
6-11-09

SET 3/4X24
REROD

S0-33-47W 16,592'
ANT



STH 14
REC 80 +/-



SW COR SEC 30
T4N R11E
PORTER TWP

- XXXXXXXX R/W FENCE IS DOWN
- FD BOLT
- SW COR SEC 30
- FD FLAT STONE 0.35 THICK X 12.0 WIDE X 1.4' LONG WITH HH ON N & S UNDER N/S FENCE. DID NOT PLACE MON.
- NE COR SEC 36 UNION TWP
- FD CUT LIMESTONE
- FD CUT LIMESTONE 0.3 ABOVE GRADE / CARSONITE POST

SHEET 4 OF 4

V-1

NOT TO SCALE
1980 BARNES VOL 6 PG 43
OBSERVATION SHEET #973

