

Paper weight-110# (minimum)

Black nonfading ink required

U.S. PUBLIC LAND SURVEY MONUMENT RECORD

For Public Land Survey Corners In:

WI ADMINISTRATIVE CODE A-E 7.08 REQUIREMENT

T. 4 N. R. 11 E. 4th P.M.

REV 10/23/2004

USMONREC.DWG

CORNER CODE INDEX

PORTER TWP

ROCK COUNTY WI

IF AVAILABLE

ROCK COUNTY COORDINATES PREFERRED

A	1	2	3	4	5	6	7	8	9	10	11	12	13	14	15	16	17	18	19	20	21	22	23	24	25	A
B			6				5					4				3				2				1		B
C																										C
D																										D
E																										E
F																										F
G																										G
H																										H
J																										J
K																										K
L																										L
M																										M
N																										N
O																										O
P																										P
Q																										Q
R																										R
S																										S
T																										T
U																										U
V																										V
W																										W
X																										X
Y																										Y
Z																										Z

North _____ Elev. _____

East _____

Hor. Datum _____ Vert. Datum _____

LATITUDE _____ ELLIPS. HT. _____

LONGITUDE _____

NAD83(91) _____ NETWORK ADJ. YR _____

GPS (X) _____ TRAVERSE (X) _____

BASED ON THE FOLLOWING CONTROL:

PLACE MONUMENT SYMBOL AT PROPER LOCATION ON ABOVE INDEX

CORNER MONUMENT

WITNESS MONUMENT

BEARINGS ARE BASED ON: _____

FIELD BOOK _____ PAGE # _____

SHEET 1 OF 2

SHOW A PLAN VIEW DRAWING DEPICTING THE CORNER MONUMENT AND SURROUNDING PHYSICAL FEATURES, INCLUDING THE EXCAVATION AREA AND DEPTH.

PLANNING & ZONING COMMITTEE ADOPTED THIS FORM ON 12/2/1982

CORNER CODE T-12

PO598

E1/4CORSEDC27

(B) Describe any record evidence, monument evidence, occupational evidence, testimonial evidence or any other material evidence you considered, and whether the monument was found or placed.

1833 HARRISON (NOV 3RD) T4N R11E 4TH MER. NORTH
BET. 26 & 27

2640.0 SET POST FOR COR TO QUARTER SEC
{BURR OAK 18 N65E 52.80'; BURR OAK
18 N74W 34.98'} {BURR OAK 18; BURR
OAK 18} MARKED

4007.52 BURR OAK 18 IN DIAM.

5280.0 SET POST FOR COR TO SECS 22,23,26,27
{BURR OAK 18 S34W 18.48'; BURR OAK
20 S56E 96.36'; BURR OAK 18 N51W
17.82'; BURR OAK 18 N25E 33.66' ?
99.66' LAND ROLLING 2ND RATE TIMBER
EVENLY BURR OAK ? ? GRASS & WEEDS

1855 STEBBINS PORTER TWP RD REC BK 1 PG 7 BEGINNING AT THE 1/4 POST ON THE SEC LINE BETWEEN SECTIONS 22 AND 23; THENCE SOUTH ON THE SEC LINE 8,712' TO A POINT ON THE CENTER OF THE HIGHWAY RUNNING EASTERLY AND WESTERLY THROUGH SEC 34 & 35, SAID POINT BEING 792' SOUTH OF THE SW COR OF SEC 26, T4NR11E. THE LENGTH OF SAID ROAD IS 8712'; SAID ROAD IS 66 WIDE. COURSES GIVEN ACCORDING TO THE TRUE MERIDIAN. VARIATION OF NEEDLE 7 3/4. H. STEBBINS-SURVEYOR

1878 RUGER VOL 2 PG 242 FD OLD STAKE & WHERE STUMPS OF BOTH TREES HAD BEEN DUG UP. SET HH 26X14X9, 1352.01 TO HH 18X8X6 @ S 1/16TH COR OF NW 1/4 SEC 26, 2704.02 TO HH 18X7X5 @ CENTER OF SEC 26

1972 THOM CSM VOL 2 PG 307 FD PIPE NORTHERLY 1321.50 TO IP @ NW COR OF GOV. LOT 3.

1973 LEE VOL 5 PG 28 FD STONE 1' EAST OF CENTER OF PVMT. REFERENCED SAME.

1978 COMBS CSM VOL 8 PG 35 STATES NOTHING ABOUT MON.

1979 BARNES VOL 5 PG 548 (KARNS SURVEY) SET ALUM. MON FROM TIES. N1-08-29W 2649.33 TO NW COR SEC 26

1982 BARNES VOL 6 PG 279 FD ALUM S00-20-19E 2660.80 TO ALUM @ SE COR SEC 27, N00-00-02W 2649.36 TO ALUM @ NE COR SEC 27, N89-54-15W 5267.03 TO 1" PIPE @ W 1/4 COR SEC 27

1983 BARNES #6841 ALUM. S0-20-19E 2660.79 TO ALUM @ SE COR SEC 27, N89-54-15W 2641.53 TO SET 2" PIPE @ CENTER OF SEC 27, N89-54-15W 5267.01 TO POLY MON @ W 1/4 COR SEC 27.

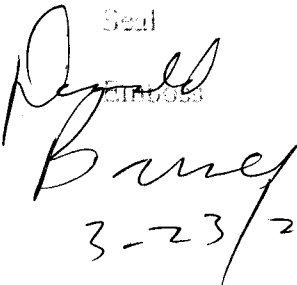
FD ALUM. MON. 0.20' DEEP, 1' EAST OF CENTER OF PVMT, & ON LINE WITH CENTER OF DRIVE TO THE WEST. OLD 1973 REF. PIPES TO THE EAST ARE NOW UNDER A GRAVEL DR. TO A LARGE BARN & OFFICE.

C) Was the corner restored through acceptance of (1) an obliterated evidence location, or, (2) a found perpetuated location?

ACCEPTED FD ALUM.

D) Describe any material discrepancy between the location of the corner as restored or reestablished and the location of that corner as previously restored or reestablished by distance and direction. Show the discrepancy on the plan view drawing under (a), above. Show the distances between the corner as previously restored or reestablished and (1) the corner as restored or reestablished, and (2) to at least 4 of the witness monuments shown on the drawing in (a), above. NONE

I, **Donald Barnes**, hereby certify that the corner location as identified by the corner code index was determined by me under my direction and control and that this U.S. Public Land Survey Monument Record is correct and complete to the best of my knowledge and belief.

Seal

 3-23/2009

SHEET 1 OF 2

CORNER CODE T-17

A.E. 7.08 REQUIREMENT

E 1/4 COR
 SEC 27
 PORTER TWP
 T4N R11E

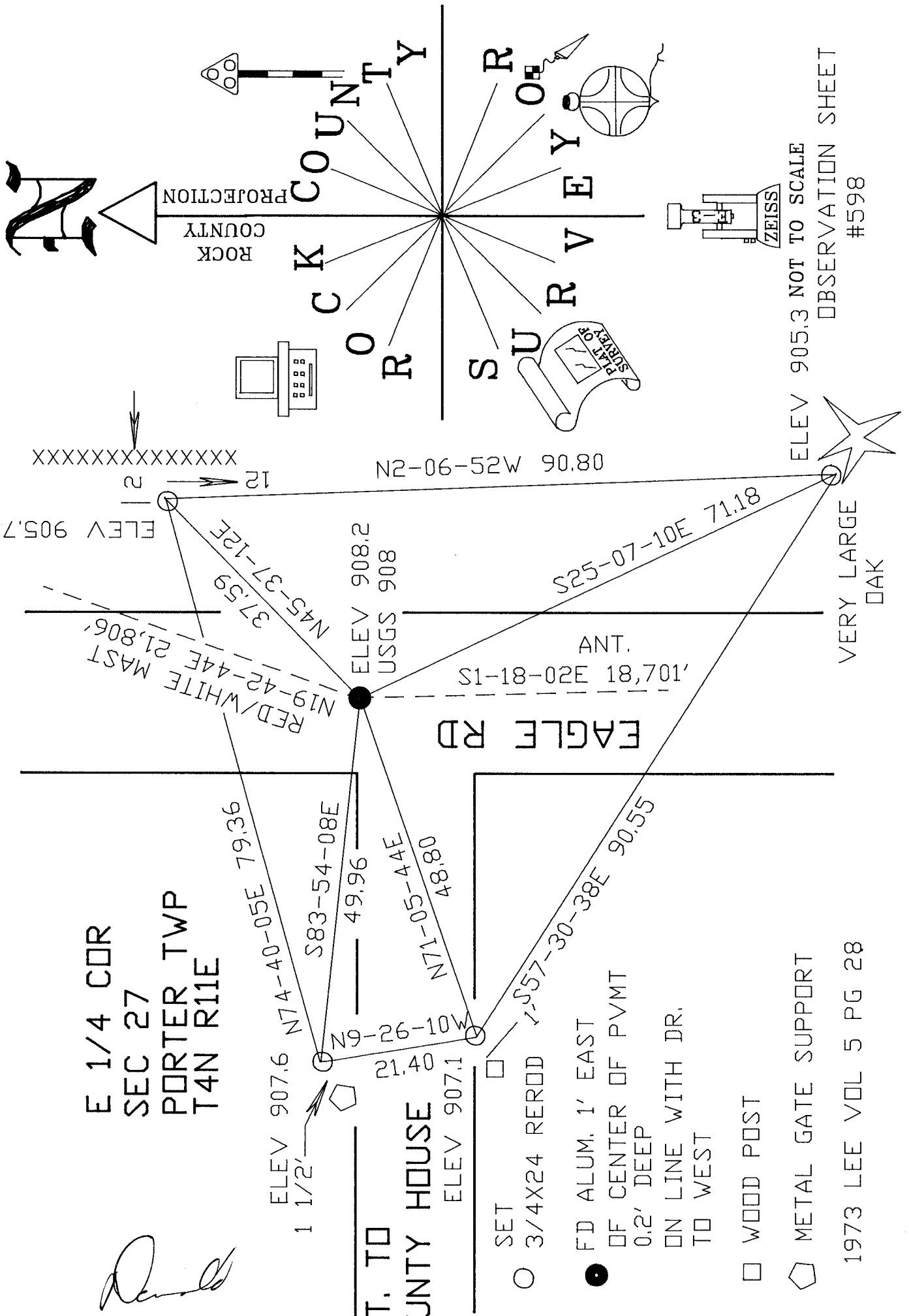
David
 EMBOSSED
 SEAL
Brady

3-23-2009

ENT. TO
 COUNTY HOUSE

SHEET 2 OF 2

T-17



ROCK COUNTY PROJECTION

ROCK COUNTY

C O U N T Y

S U R V E Y

O F

R O C K C O U N T Y

ZEISS

ELEV 905.3 NOT TO SCALE
 OBSERVATION SHEET #598

- SET
- 3/4X24 REROD 1.557-30-38E 90.55
- FD ALUM. 1' EAST OF CENTER OF PVMT 0.2' DEEP ON LINE WITH DR. TO WEST
- WOOD POST
- ◻ METAL GATE SUPPORT

1973 LEE VOL 5 PG 28